

Lou Baffle Management Status Report
 File: H_FCP_SYS_LOUS.xls
 Author: E. Picallo



Procedure Summary

Objectives

This procedure describes the steps needed to acquire the status of the ASW function "Lou Baffle Management" (0xFF for running idle or 0x00 for stopped).

Moreover in the TM packet are also reported the following information:

- Control Status
- Heater Configuration(LCL59&61 or LCL59&66 or LCL61&66)
- Low Threshold
- High Threshold

Summary of Constraints

n/a

Spacecraft Configuration

Start of Procedure

- CDMU in default configuration, that is:
- PM A or B ON (nominally A)
 - TM Encoder/OBT A or B active (nominally A)
 - RM A and B enabled
 - MM A and B ON

End of Procedure

- CDMU in default configuration, that is:
- PM A or B ON (nominally A)
 - TM Encoder/OBT A or B active (nominally A)
 - RM A and B enabled
 - MM A and B ON

Reference File(s)

Input Command Sequences

Output Command Sequences

HFYLOUS

Referenced Displays

ANDs GRDs SLDs
 (None)

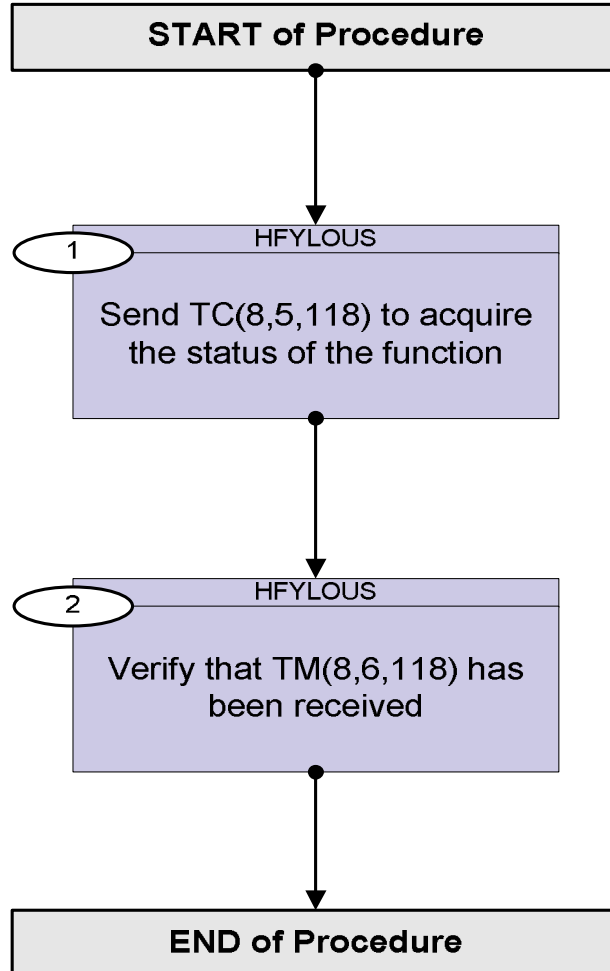
Configuration Control Information

DATE	FOP ISSUE	VERSION	MODIFICATION DESCRIPTION	AUTHOR	SPR REF
04/08/08	1	1	Created	E. Picallo	
26/11/08		2	database alignment	E. Picallo	
08/01/09	2	3	LOU baffle thresholds reference updated to [220,230]K according to H-P-2-ASP-ID-1418 issue 4	E. Picallo	

Lou Baffle Management Status Report
File: H_FCP_SYS_LOUS.xls
Author: E. Picallo



Procedure Flowchart Overview



Lou Baffle Management Status Report
 File: H_FCP_SYS_LOUS.xls
 Author: E. Picallo



Step No.	Time	Activity/Remarks	TC/TLM	Display/ Branch
Beginning of Procedure				
TC Seq. Name : HFYLOUS (LOU Function Report) Report Lou Baffle Management Status TimeTag Type: N Sub Schedule ID: <input type="checkbox"/>				
1		Send TC(8,5,118) to acquire the status of the function		Next Step: 2
		Report Lou Baffle Management Status telecommand is used for requiring the status of the function as a telemetry packet. By default the Lou Baffle Management function is enabled, but the Lou Baffle controlling is disabled.		
		Execute Telecommand <div style="text-align: right;">ReportLouBaffleManSts</div> TC Control Flags : <div style="text-align: right;">GBM IL DSE --Y -- --</div> Subsch. ID : 10 Det. descr. : Report LouBaffle Management Status TC(8,5,118)	DCP06170	
2		Verify that TM(8,6,118) has been received		Next Step: END
		Only one of the following two Lou Baffle Management Status Report TM(8,6,118) will be received with the following parameters: - Activity ID (function Stopped or Running) - Control Status (LOU Baffle Control Stopped or Running) - Heater Configuration (LCL59&61 or LCL59&66 or LCL61&66) - Low Threshold - High Threshold		
		- If the function is started:		
		Verify Packet Reception TM 8-6-118-255 LOU Baffle Management Status Report - RunningIdle Packet Details: <div style="text-align: right;"> APID: 16 Type: 8 Subtype: 6 PI1: 30463 PI2: 0 </div>	LouBafMngRun	
		- If the function is stopped:		

Lou Baffle Management Status Report
 File: H_FCP_SYS_LOUS.xls
 Author: E. Picallo



Step No.	Time	Activity/Remarks	TC/TLM	Display/ Branch										
		Verify Packet Reception TM 8-6-118-0 LOU Baffle Management Status Report - Stopped Packet Details: <table style="margin-left: 200px;"> <tr><td>APID:</td><td>16</td></tr> <tr><td>Type:</td><td>8</td></tr> <tr><td>Subtype:</td><td>6</td></tr> <tr><td>PI1:</td><td>30208</td></tr> <tr><td>PI2:</td><td>0</td></tr> </table>	APID:	16	Type:	8	Subtype:	6	PI1:	30208	PI2:	0	LouBafMngStp	
APID:	16													
Type:	8													
Subtype:	6													
PI1:	30208													
PI2:	0													
		Each TM packet contains the following parameters:												
		Verify Function ID Telemetry Function_ID DE008170	= LouBafManagemt	(None)										
		Verify Activity ID Telemetry ActivityId DE022170		(None)										
		Verify SID Telemetry SID DE010170	= 0 <dec>	(None)										
		Verify LOU Baffle control status Telemetry LouBafCtrlSts DEZA3170		(None)										
		Verify Heater Configuration Telemetry LouBafHeatConf DEZA2170		(None)										
		Verify Low Threshold Telemetry LouBafLowThrC DEZY0170		(None)										
		Verify Spare Telemetry LouBafLowThr_C DEZA0170		(None)										
		Verify High Threshold Telemetry LouBafHiThrC DEZY1170		(None)										
		Verify Spare Telemetry LouBafHiThr_C DEZA1170		(None)										
		Default LOU baffle heating temperature Thresholds: - Low temp. Threshold: 220K = -53.15C = 8480 RAW = 0x2120 RAW - High temp. Threshold: 230K = -43.15C = 8816 RAW = 0x2270 RAW Note: The 12-bit acquired raw value is left aligned and stored into data-pool as a 16-bit data. Default Heater Configuration: - LCL59&61												
End of Procedure														