

Stop LOU Baffle Decontamination
 File: H_FCP_SYS_LOU0.xls
 Author: E. Picallo



Procedure Summary

Objectives

This procedure describes the steps needed to stop LOU Baffle decontamination.

Summary of Constraints

To stop the decontamination, the LOU baffle control must be disabled.
 However, the LOU management function shall always remain active. Therefore the command to stop the LOU baffle management function shall not be used.

Spacecraft Configuration

Start of Procedure

LOU Baffle management function running
 LOU Baffle control enabled

End of Procedure

LOU Baffle management function running
 LOU Baffle control disabled
 LOU Baffle heater lines OFF

Reference File(s)

Input Command Sequences

Output Command Sequences

HFYLOU0

Referenced Displays

ANDs GRDs SLDs
 ZAZ9I999

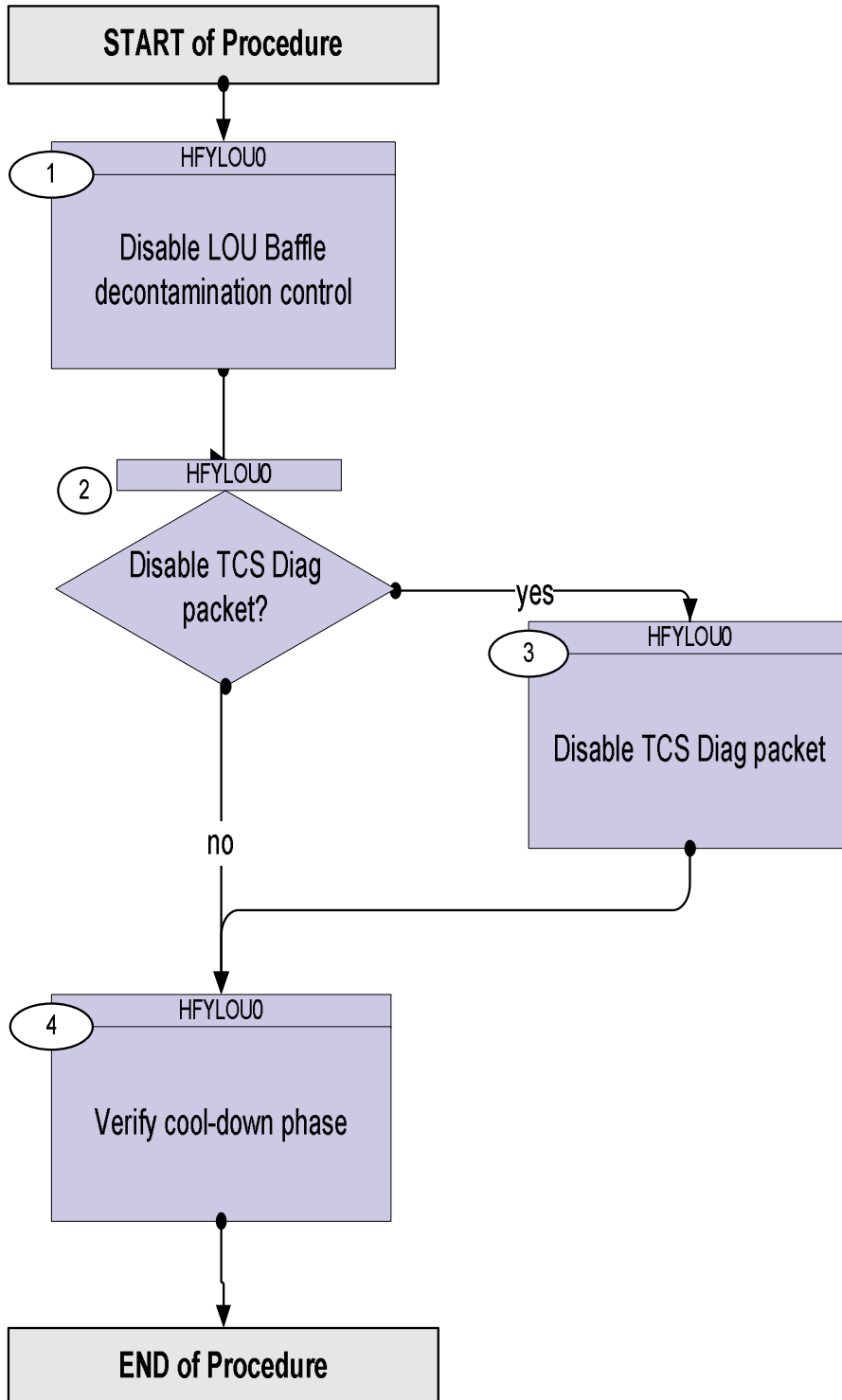
Configuration Control Information

DATE	FOP ISSUE	VERSION	MODIFICATION DESCRIPTION	AUTHOR	SPR REF
04/08/08	1	1	Created	E. Picallo	
04/09/08		2	Disabling of TCS diagnostic packet.	E. Picallo	
08/01/09	2	3	Expected LOU baffle temp. at start cold-down updated according to new LOU baffle heating thresholds [220,230]K	E. Picallo	

Stop LOU Baffle Decontamination
File: H_FCP_SYS_LOU0.xls
Author: E. Picallo



Procedure Flowchart Overview



Stop LOU Baffle Decontamination
 File: H_FCP_SYS_LOU0.xls
 Author: E. Picallo



Step No.	Time	Activity/Remarks	TC/TLM	Display/ Branch
Beginning of Procedure				
TC Seq. Name : HFYLOU0 (Stop Lou Baffle Dec) Stop LOU Baffle Decontamination TimeTag Type: N Sub Schedule ID: <input type="checkbox"/>				
1		Disable LOU Baffle decontamination control		Next Step: 2
		To stop the decontamination, the LOU baffle control must be disabled. However, the LOU management function must always remain activated. The command to stop the LOU baffle management function is not used.		
		Execute Telecommand <div style="text-align: right;">DisableLouBaffleCtrl</div> TC Control Flags : <div style="text-align: right;">GBM IL DSE --Y -- --</div> Subsch. ID : 10 Det. descr. : Disable Lou Baffle control TC(8,4,118,2)	DCP04170	
1.1		Acquire the Lou Baffle Management Status Report		<input type="checkbox"/>
		Call H_FCP_SYS_LOUS and verify that the LOU Baffle control is Disabled.		
		Execute Procedure: H_FCP_SYS_LOUS Lou Baffle Management Status Report		
1.2		Verify the status and current of the LOU heaters in order to detect any anomaly		<input type="checkbox"/>
		Nominally, the two heaters used in the LOU decontamination are the corresponding to the LCL59 and LCL61		
		Verify Telemetry <div style="text-align: right;">LouDecH1_L59_1S WM42F565</div>	= OFF	AND=ZAZ9I999
		Verify Telemetry <div style="text-align: right;">LouDecH1_L59_I WM411565</div>	<= 0.1 A	AND=ZAZ9I999
		Verify Telemetry <div style="text-align: right;">LouDecH2_L61_1S WM72F565</div>	= OFF	AND=ZAZ9I999

Stop LOU Baffle Decontamination
 File: H_FCP_SYS_LOU0.xls
 Author: E. Picallo



Step No.	Time	Activity/Remarks	TC/TLM	Display/ Branch
		Verify Telemetry LouDecH2_L61_I WM711565	<= 0.1 A	AND=ZAZ9I999
		Verify Telemetry LouDecH3_L66_1S WM52F565	= OFF	AND=ZAZ9I999
		Verify Telemetry LouDecH3_L66_I WM511565	<= 0.1 A	AND=ZAZ9I999
2		Disable TCS Diag packet?		Next Step: yes 3 no 4
		If the TCS Diagnostic packet is not anymore needed, disable it.		
3		Disable TCS Diag packet		Next Step: 4
		Call procedure "Enable or disable the generation of an housekeeping or diagnostic packet" H_FCP_DHS_3033 Disable the TCS Diagnostic packet: TCS -> subtype=26, packet-ID=100		
		Execute Procedure: H_FCP_DHS_3033 Enable or disable the generation of an housekeeping or diagnostic packet		
4		Verify cool-down phase		Next Step: END
		The LOU temperature at the end of the decontamination should be in the range [220°K - 230°K] TBC		
4.1		Verify the LOU temperature		□
		Verify LOU THERMISTOR 1 Telemetry LouBaffleTemp1 ZMP17999		AND=ZAZ9I999
		Verify LOU THERMISTOR 2 Telemetry LouBaffleTemp2 ZMP18999		AND=ZAZ9I999
		Verify LOU THERMISTOR 3 Telemetry LouBaffleTemp3 ZMP19999		AND=ZAZ9I999
End of Procedure				