

Write the ASW to EEPROM
 File: H_FCP_SPI_CLEM.xls
 Author: L.Lucas-hp



Procedure Summary

Objectives

The objective of this procedure is to write the currently running ASW into the EEPROM.

Summary of Constraints

Spacecraft Configuration

Start of Procedure

SPIRE is in REDY mode

End of Procedure

SPIRE is in REDY mode

Reference File(s)

Input Command Sequences

Output Command Sequences

HFSCLEM

Referenced Displays

ANDs **GRDs** **SLDs**
 ZAZ96999
 SA_1_559

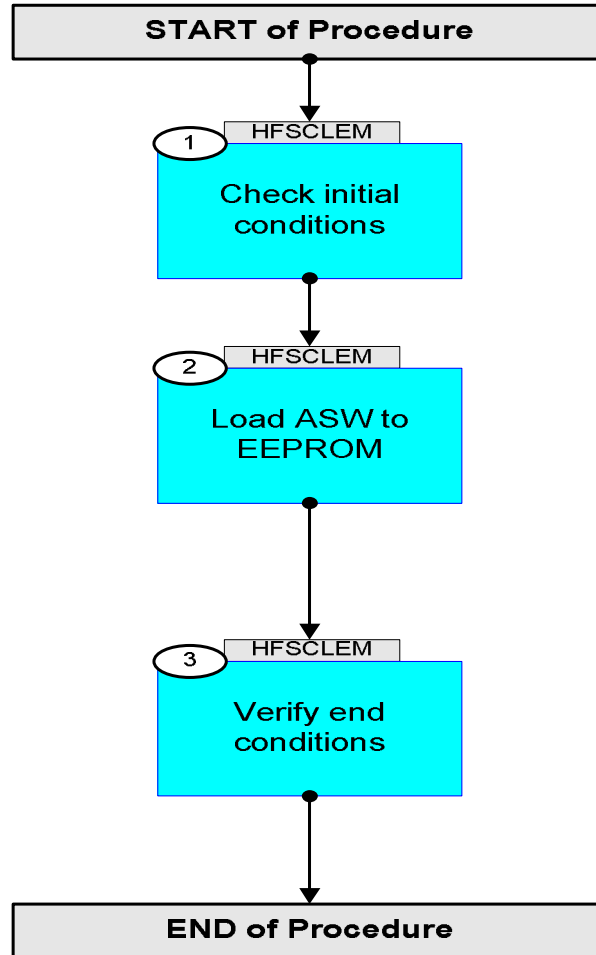
Configuration Control Information

DATE	FOP ISSUE	VERSION	MODIFICATION DESCRIPTION	AUTHOR	SPR REF
19/05/08	1	1	Created	R. Biggins	
04/11/09		2	Changes to command parameters for new OBSW 4.0.0 ENADDR_WRITE2EEPROM SPD6N505 was 171EC	L.Lucas-hp	
11/11/09		3	Procedure updates received from SPIRE, requesting removal of commands for booting the DPU which may include an element of risk. Risk deemed not worth taking.	L.Lucas-hp	
11/11/09	3	4	Removed superfluous text	L.Lucas-hp	

Write the ASW to EEPROM
File: H_FCP_SPI_CLEM.xls
Author: L.Lucas-hp



Procedure Flowchart Overview



Write the ASW to EEPROM
 File: H_FCP_SPI_CLEM.xls
 Author: L.Lucas-hp



Step No.	Time	Activity/Remarks	TC/TLM	Display/ Branch
Beginning of Procedure				
TC Seq. Name : HFSCLEM (Write to EEPROM)				
TimeTag Type: N Sub Schedule ID: □				
1		Check initial conditions		Next Step: 2
		MOC should be advised by SPIRE as to whether the PRIMARY or SECONDARY partition is to be loaded. The PRITION Formal Parameter should be set as follows: 0 = PRIMARY partition 1 = SECONDARY partition		
		Verify Telemetry MODE SM00M500	= REDY	AND=ZAZ96999
2		Load ASW to EEPROM		Next Step: 3
		Execute Telecommand WRITE2EEPROM Command Parameter(s) : STARTADDR_WRITE2EEPROM SPD5N505 ENDADDR_WRITE2EEPROM SPD6N505 PARTITION_FLAG SPDAN505 JUMP_NPAGES SPDBN505 Subsch. ID : 370 Det. descr. : COPY PM TO EEPROM	SCD08505 4000 <hex> 16057 <hex> PRITION 0 <hex>	
		Verify: Wait approximately 30 seconds for the TM(1,7)		
3		Verify end conditions		Next Step: END
		The following version check should ensure that the expected software version is running.		
		Verify Telemetry OBSVER1 SM0EN500	Version	AND=ZAZ96999
		Verify Telemetry OBSVER2 SM0FN500	Sub-version	AND=ZAZ96999
		Verify Telemetry OBSVER3 SM05F500	Revision	AND=ZAZ96999
		Verify Telemetry MODE SM00M500	= DPU_ON	AND=SA_1_559

Write the ASW to EEPROM
File: H_FCP_SPI_CLEM.xls
Author: L.Lucas-hp



Step No.	Time	Activity/Remarks	TC/TLM	Display/ Branch
End of Procedure				