

Update HIFI DPU PRAM ground image from memory dump
 File: H_FCP_OBS_3143.xls
 Author: Liviu Stefanov



Procedure Summary

Objectives

This Herschel OBSM nominal procedure is used to perform a HIFI DPU PRAM ground image update from memory dump of one or several HIFI DPU PRAM memory areas. The memory dump is commanded using TC(6,5) and the memory locations content is received on ground in TM(6,6) packets.

The procedure assumes that the command stack has already been generated using the OBSM system and is ready for loading on the Manual Stack. The command stack generation activity is not covered by this procedure.

Summary of Constraints

- CDMU in Operational Mode
- HIFI in Intermediate mode (ASW running)
- Memory areas are dumped through TC(6,5); this TC will be delayed when there is an ongoing:
- TC(6,2) Load Memory Using Absolute Addresses
 - TC(6,5) Dump Memory Using Absolute Addresses
 - TC(6,9) Check Memory Using Absolute Addresses
 - TC(8,4,1,1) Copy Memory

Spacecraft Configuration

Start of Procedure

- CDMU in Operational Mode
- HIFI in Intermediate mode (ASW running)

End of Procedure

- Same as start except:
- HIFI DPU PRAM dump executed

Reference File(s)

Input Command Sequences

Output Command Sequences

OFCP3143

Referenced Displays

ANDs GRDs SLDs

Configuration Control Information

DATE	FOP ISSUE	VERSION	MODIFICATION DESCRIPTION	AUTHOR	SPR REF
30/01/2008		1	Created	Istefanov-hp	
30/01/2008	1	2	corrected typo in TC Sequence Name	Istefanov-hp	

Update HIFI DPU PRAM ground image from memory dump
 File: H_FCP_OBS_3143.xls
 Author: Liviu Stefanov

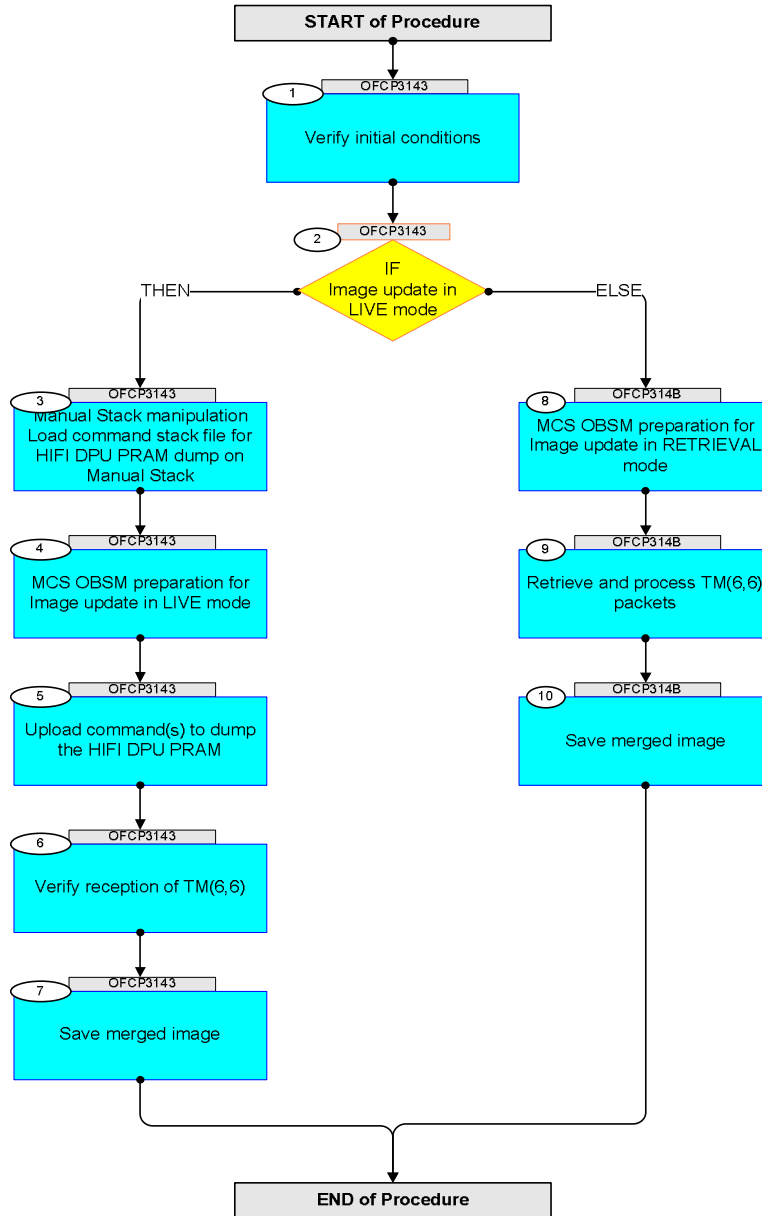


27/08/2008		3	1. added current steps 3.1 and 3.2 to separate dump stack load for HIFI Nom and Red 2. current step 3.3 updated: TC HC004289 replaced by ESOC HIFI mem. dump TC XC005998 3. added steps 4.2.1 and 4.2.2 to separate image selection for HIFI Nom and Red 4. added steps 8.2.1 and 8.2.2 to separate image selection for HIFI Nom and Red	Istefanov-hp	
27/08/2008		4	1. steps 3.1 and 3.2 updated: corrected typos in file name examples in 3rd comment - PI replaced by DI 2. step 3.3 updated: changed 2nd comment to reflect the 16 bit length of the Mem ID param. of TC XC005998	Istefanov-hp	
04/09/2008	2	5	1. steps 4.2.1, 4.2.2, 8.2.1 and 8.2.2 changed: "monitored" replaced by "updated" in comment statement	Istefanov-hp	
13/04/2009	2.3	6	1. corrected typo in steps 3.1, 3.2: 'pmcsops' replaced by 'hmcops' 2. step 3.3 updated: added comment to indicate the size of the whole memory area	Istefanov-hp	
10/06/2009		7	1. step 3.3 updated: added comments indicating start and end address for OBS image dump from PM-Low and PM-High	Istefanov-hp	
16/06/2009		8	1. corrected typo in 2nd comment in step 3.3: 8000 hex replaced by 1852C hex, in line with Luc Dubbeldam's comment, e-mail 11/06/2009	Istefanov-hp	
08/09/2009	2.5	9	1. step 3.3 updated to instruct the operator to exclude the runtime header memory area from OBSM Monitor/Comparison (for OBS image dumps), as advised by Luc Dubbeldam in e-mail from 23/06/2009	Istefanov-hp	
11/02/2010		10	Updated step 3.3 with details of OBS 3.4.3 length	m.baker-hp	
11/02/2010	3	11	Updated typo in memory end address in step 3.3.	m.baker-hp	
22/04/2010		12	Updated to include software length for version 6.4.1.	m.baker-hp	
27/01/2011		13	Updated to include software length for version 6.5.2.	n.krusenstiern-hp	
14/04/2011	3.1	14	Updated for HIFI OBS 6.5.3	n.krusenstiern-hp	

Update HIFI DPU PRAM ground image from memory dump
 File: H_FCP_OBS_3143.xls
 Author: n.krusenstiern-hp



Procedure Flowchart Overview



Update HIFI DPU PRAM ground image from memory dump
 File: H_FCP_OBS_3143.xls
 Author: n.krusestiern-hp




Step No.	Time	Activity/Remarks	TC/TLM	Display/ Branch	AIT Comment
Beginning of Procedure					
	OFCP3143	TC Seq. Name :OFCP3143 () HIFI DPU PRAM image update in Live mode TimeTag Type: B Sub Schedule ID: <input type="checkbox"/>			
1		Verify initial conditions		Next Step: 2	
		Check HIFI instrument in Intermediate mode (ASW running)			
		Instrument SOE to confirm HIFI instrument mode			
2		IF Image update in LIVE mode type: [If]		Next Step: THEN 3 ELSE 8	
3		Manual Stack manipulation Load command stack file for HIFI DPU PRAM dump on Manual Stack		Next Step: 4	
		NOTE: The current procedure assumes that the memory dump in Live mode is performed using commands with immediate execution.			
		Select the File -> LoadStack option from the main menu of the Manual Stack window			
3.1		IF HIFI Nominal			
		Select file HIDPRMPG_DI_XXXXYYY_N_NoModel_NoModel_YYYY_DDDThhmmss.machine from directory /home/hmcsops/HPMCS/SESSION/current/data/CMD/STACKS/OBSM/HIDPRMPG as indicated by the OBSM engineer			
		IMPORTANT: XXXXYYY = Image ID(X) and Version(Y) - depend on image used for stack generation YYYY_DDD hhmmss - depend on stack generation time machine - depends on the name of the machine used for stack generation			

Update HIFI DPU PRAM ground image from memory dump File: H_FCP_OBS_3143.xls Author: n.krusestiern-hp	
--	--

Step No.	Time	Activity/Remarks	TC/TLM	Display/ Branch	AIT Comment
		File name examples - No model associated to the memory image: HIDPRMPG_DI_0004001_N_NoModel_NoModel_2011_101T172257.ws044 - CT HIDPRMPG1, ID 0003, Version 001 associated to the memory image: HIDPRMPG_DI_0002001_C_HIDPRMPG1_0003001_2007_337T093320.sun043			
3.2		ELSE HIFI Redundant			
		Select file HIDPRMPR_DI_XXXXYYY_N_NoModel_NoModel_YYYY_DDDThhmmss.machine from directory /home/hmcops/HPMCS/SESSION/current/data/CMD/STACKS/OBSM/HIDPRMPR as indicated by the OBSM engineer			
		IMPORTANT: XXXXYYY = Image ID(X) and Version(Y) - depend on image used for stack generation YYYY_DDD hhmmss - depend on stack generation time machine - depends on the name of the machine used for stack generation			
		File name examples - No model associated to the memory image: HIDPRMPR_DI_0004001_N_NoModel_NoModel_2011_101T172257.ws044 - CT HIDPRMPR1, ID 0003, Version 001 associated to the memory image: HIDPRMPR_DI_0002001_C_HIDPRMPR1_0003001_2007_337T093320.sun043			
3.3		Check memory dump command stack loaded			
		Note: for the whole HIFI DPU PRAM dump: MemID = 00 hex Start Address = 00.0000 hex End Address = 07.FFFF hex Length = 08.0000 hex			

Update HIFI DPU PRAM ground image from memory dump File: H_FCP_OBS_3143.xls Author: n.krusestiern-hp	
--	--

Step No.	Time	Activity/Remarks	TC/TLM	Display/ Branch	AIT Comment									
		<p>Note: for the HIFI OBS v.6.5.3 image dump from PM-Low :</p> <p>MemID = 00 hex Start Address = 00.0000 hex End Address = 01.8E1E hex Length = 01.8E1F hex</p>												
		<p>Note: The HIFI OBS image delivered in ICD-14 format consists of one block. The block contains three segments (PM-Low addresses following):</p> <ul style="list-style-type: none"> - the runtime header starts at 0x00, length= 0x100 - the init-segment starts at 0x4000 - the PM-code segment. <p>The regions between segments are filled with 0x00.</p>												
		<p>IMPORTANT: The runtime header in PM-Low changes continuously.</p> <p>A memory model (CT) shall be used to exclude this memory area from OBSM Image Monitor or Image Compare against an OBSM Base Image.</p>												
		Check that loaded stack contains one or several TCs XC005998												
		<p>Display the Manual Stack in 'Full mode' and check that the Memory ID parameter in the XC005998 command(s) is set to 00 hex:</p> <p>Memory ID = 00 hex</p> <p>Note: The Memory ID of the target memory device is stored in the MSB of the 16-bit long Mem ID TC parameter. The LSB of the same parameter carries the most significant 8 bits of the Start Address.</p>												
		<p>Execute Telecommand</p> <p style="text-align: center;">HIFI Memory Dump</p> <p>Command Parameter(s) :</p> <table style="margin-left: 40px; border: none;"> <tr> <td style="padding-right: 20px;">Memory ID</td> <td style="padding-right: 20px;">XH008998</td> <td style="padding-right: 20px;">00xx <hex></td> </tr> <tr> <td>Start Address</td> <td>XH009998</td> <td><hex> (Def)</td> </tr> <tr> <td>Length</td> <td>XH010998</td> <td><hex> (Def)</td> </tr> </table> <p>TC Control Flags :</p> <p style="margin-left: 40px;">GBM IL DSE --Y -- --</p> <p>Subsch. ID : 70 Det. descr. : Dump HIFI Memory Using Absolute Addresses This Telecommand will not be included in the export</p>	Memory ID	XH008998	00xx <hex>	Start Address	XH009998	<hex> (Def)	Length	XH010998	<hex> (Def)	XC005998	TC	
Memory ID	XH008998	00xx <hex>												
Start Address	XH009998	<hex> (Def)												
Length	XH010998	<hex> (Def)												
4		MCS OBSM preparation for Image update in LIVE mode		Next Step: 5										
		<p>Note: It is assumed that the OBSM application is already running and the OBSM Desktop is displayed on the MCS client. Starting the OBSM application is not covered by the current procedure.</p>												

Update HIFI DPU PRAM ground image from memory dump File: H_FCP_OBS_3143.xls Author: n.krusestiern-hp	
--	--

Step No.	Time	Activity/Remarks	TC/TLM	Display/ Branch	AIT Comment
4.1		Select 'Image UPDATE' from the menu			
		Select the Image menu of the <i>OBSM Desktop</i> . From the Image menu, select Update . The 'Image Catalog' window opens.			
4.2		Select image to be updated			
4.2.1		IF HIFI Nominal			
		Select the image to be updated for the memory device HIDPRMPG . The 'Image UPDATE' window opens.			
4.2.2		ELSE HIFI Redundant			
		Select the image to be updated for the memory device HIDPRMPR . The 'Image UPDATE' window opens.			
4.3		Start dump TM processing			
		In LIVE mode, processing of incoming real-time telemetry starts automatically after the image selection.			
5		Upload command(s) to dump the HIFI DPU PRAM		Next Step: 6	
		Uplink the XC005998 memory dump command(s) with ARM-GO			
		For each command, one or more TM(6,6) packets must be received on ground.			
6		Verify reception of TM(6,6)		Next Step: 7	
		Note: One or more TM(6,6) packets will be received for each memory dump command uplinked.			

Update HIFI DPU PRAM ground image from memory dump
 File: H_FCP_OBS_3143.xls
 Author: n.krusestier-nhp




Step No.	Time	Activity/Remarks	TC/TLM	Display/ Branch	AIT Comment
6.1		IF HIFI Prime			
		Verify Packet Reception HIFI_memory_dump Packet Mnemonic : H_mem_dump APID : 1024 Type : 6 Subtype : 6 PI1 : PI2 :			
6.2		ELSE HIFI Redundant			
		Verify Packet Reception HIFI_R_memory_dump Packet Mnemonic : H_mem_dump APID : 1025 Type : 6 Subtype : 6 PI1 : PI2 :			
6.3		Check OBSM dump packet processing			
		Check that the OBSM is processing the incoming memory dump packets.			
7		Save merged image		Next Step: END	
		Save merged image with new ID .			
End of Sequence					
OFCP314B TC Seq. Name : OFCP314B () HIFI DPU PRAM image update in Retrieval mode TimeTag Type: Sub Schedule ID: <input type="checkbox"/>					
8		MCS OBSM preparation for Image update in RETRIEVAL mode		Next Step: 9	
		Note: It is assumed that the OBSM application is already running and the OBSM Desktop is displayed on the MCS client. Starting the OBSM application is not covered by the current procedure.			

Update HIFI DPU PRAM ground image from memory dump
 File: H_FCP_OBS_3143.xls
 Author: n.krusenstiern-hp




Step No.	Time	Activity/Remarks	TC/TLM	Display/ Branch	AIT Comment
8.1		Select 'Image UPDATE' from the menu			
		Select the Image menu of the <i>OBSM Desktop</i> . From the Image menu, select Update . The 'Image Catalog' window opens.			
8.2		Select image to be updated			
8.2.1		IF HIFI Nominal			
		Select the image to be updated for the memory device HIDPRMPG . The 'Image UPDATE' window opens.			
8.2.2		ELSE HIFI Redundant			
		Select the image to be updated for the memory device HIDPRMPR . The 'Image UPDATE' window opens.			
8.3		Start dump TM packets processing			
		Set retrieval start and stop time and start retrieval of TM packets using the PLAY buttons.			
9		Retrieve and process TM(6,6) packets		Next Step: 10	
		Use the STEP button to retrieve and process the TM(6,6) packets, packet by packet and starting from the time shown in the packet time field.			
		OR			
		Use the PLAY button to retrieve and process the TM(6,6) packets in automated mode. Pressing the PLAY button, the display will start to retrieve and process packets, starting from the time shown in the packet time field. This processing will stop automatically when a packet is received which creation time is greater than the one contained in the end time field.			

Update HIFI DPU PRAM ground image from memory dump
 File: H_FCP_OBS_3143.xls
 Author: n.krusestiern-hp



Step No.	Time	Activity/Remarks	TC/TLM	Display/ Branch	AIT Comment
10		Save merged image		Next Step: END	
		Save merged image with new ID .			
End of Sequence					
End of Procedure					