

Load OBSW to EEPROM
 File: H_FCP_HIF_CLEM.xls
 Author: R. Biggins



Procedure Summary

Objectives

The objective of this procedure is to load the current OBSW to the EEPROM

Summary of Constraints

This procedure should be executed immediately after any of the OBSM procedures, on the condition that the corresponding uploaded OBSW version needs to be written on the EEPROM

Spacecraft Configuration

Start of Procedure

HIFI in INTERMEDIATE mode

End of Procedure

HIFI in INTERMEDIATE mode

Reference File(s)

Input Command Sequences

Output Command Sequences

HFHCLEM

Referenced Displays

ANDs GRDs SLDs
 ZAZ9C999

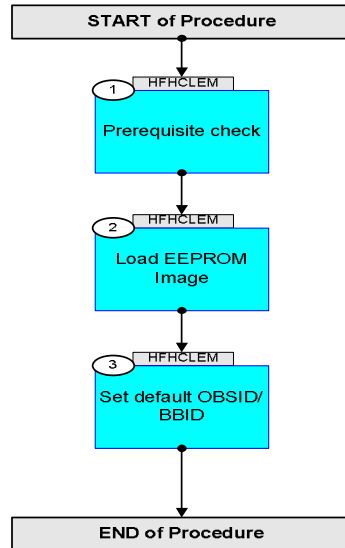
Configuration Control Information

DATE	FOP ISSUE	VERSION	MODIFICATION DESCRIPTION	AUTHOR	SPR REF
04/11/08	2	1	Created	R. Biggins	

Load OBSW to EEPROM
File: H_FCP_HIF_CLEM.xls
Author: R. Biggins



Procedure Flowchart Overview



Load OBSW to EEPROM
 File: H_FCP_HIF_CLEM.xls
 Author: R. Biggins



Step No.	Time	Activity/Remarks	TC/TLM	Display/ Branch
Beginning of Procedure				
TC Seq. Name : HFHCLEM (Load EEPROM)				
TimeTag Type: N Sub Schedule ID: □				
1		Prerequisite check		Next Step: 2
1.1		HSC/ICC input		□
		Verify that the HSC has supplied a valid OBSID value OBS_ID = 0xnnnn nnnn		
		Verify that the ICC has indicated on which partition should be updated: PARTITON = 1 or 2		
2		Load EEPROM Image		Next Step: 3
	ET=+ UT=+00.00.01	HIFI_Set_OBS_ID HIFI_Set_OBS_ID Command Parameter(s) : HIFI_BB_ID HP001197 HIFI_OBS_ID HP000197 Subsch. ID : 70 Det. descr. : Set Observation-ID and Building-Block-ID	HC014289 1EF20001 <hex> OBS_ID	
		Verify Telemetry BB_ID_per_hk HM004190	= 1EF20001 <hex>	AND=ZAZ9C999
		Verify Telemetry OBS_ID_per_hk HM003190	OBS_ID	AND=ZAZ9C999
		The following TC will load the currently running OBSW into the EEPROM.		
		Execute Telecommand HIFI_eeprom_write Command Parameter(s) : OBS_mem_end HP005197 HIF_partition_ID HP228197 HIF_Npages_to_skip HP229197 Subsch. ID : 70 Det. descr. : Write the OBS-image to the specified EEPROM partition	HC165289 102399 <dec> PARTITON 0 <dec>	

Load OBSW to EEPROM
 File: H_FCP_HIF_CLEM.xls
 Author: R. Biggins



Step No.	Time	Activity/Remarks	TC/TLM	Display/ Branch
3		Set default OBSID/BBID		Next Step: END
	ET=+ UT=+00.00.01	HIFI_Set_OBS_ID <p style="text-align: right;">HIFI_Set_OBS_ID</p> Command Parameter(s) : HIFI_BB_ID HP001197 HIFI_OBS_ID HP000197 Subsch. ID : 70 Det. descr. : Set Observation-ID and Building-Block-ID	HC014289 0 <hex> (Def) 0 <hex> (Def)	
		Verify Telemetry BB_ID_per_hk HM004190	= 0 <hex>	AND=ZAZ9C999
		Verify Telemetry OBS_ID_per_hk HM003190	= 0 <hex>	AND=ZAZ9C999
End of Procedure				