

HifiManCmdSetIntoStandby\_I  
File: H\_FCP\_HIF\_C2S1.xls  
Author: R. Biggins



## Procedure Summary

### Objectives

The objective of this procedure is to set HIFI into Standby1 mode

Based on procedure:  
HifiManCmdSetIntoStandby\_I (v3)

### Summary of Constraints

This should only be used prior to patch or safety table upload activities

### Spacecraft Configuration

#### Start of Procedure

HIFI in Standby0 mode

#### End of Procedure

HIFI in Standby1 mode

### Reference File(s)

#### Input Command Sequences

#### Output Command Sequences

HFHC2S1

### Referenced Displays

ANDs      GRDs      SLDs  
ZAZ9C999

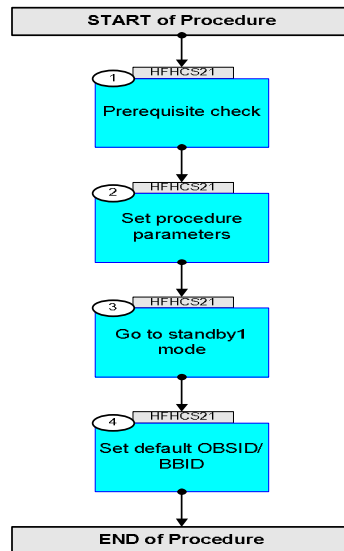
### Configuration Control Information

DATE	FOP ISSUE	VERSION	MODIFICATION DESCRIPTION	AUTHOR	SPR REF
10/12/09		1	Created	R. Biggins	
15/02/10	3	2	Sequence name corrected	R. Biggins	

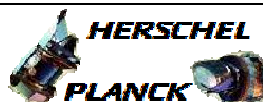
HifiManCmdSetIntoStandby\_I  
File: H\_FCP\_HIF\_C2S1.xls  
Author: R. Biggins



## Procedure Flowchart Overview



HifiManCmdSetIntoStandby\_I  
 File: H\_FCP\_HIF\_C2S1.xls  
 Author: R. Biggins



Step No.	Time	Activity/Remarks	TC/TLM	Display/ Branch
<b>Beginning of Procedure</b>				
TC Seq. Name : HFHC2S1 (Set Standby1)  TimeTag Type: N Sub Schedule ID:  <input type="checkbox"/>				
1		Prerequisite check		Next Step: 2
1.1		HSC/ICC input		<input type="checkbox"/>
		Verify that the HSC has supplied a valid OBSID value  OBS_ID = 0xnnnn nnnn		
2		Set procedure parameters		Next Step: 3
	ET=+ UT=+00.00.00	HIFI_Set_OBS_ID <div>HIFI_Set_OBS_ID</div> Command Parameter(s) : <div>             HIFI_BB_ID            HP001197              HIFI_OBS_ID         HP000197           </div> TC Control Flags : <div> <div>GBM IL DSE</div> <div>--Y -- ---</div> </div> Subsch. ID : 70 Det. descr. : Set Observation-ID and Building-Block-ID	HC014289  1EF20001 <hex> OBS_ID	
		Verify Telemetry <div>BB_ID_per_hk            HM004190</div>	= 1EF20001 <hex>	AND=ZAZ9C999
		Verify Telemetry <div>OBS_ID_per_hk           HM003190</div>	OBS_ID	AND=ZAZ9C999
3		Go to standby1 mode		Next Step: 4
	ET=+ UT=+00.00.00	HIFI_HL_Standby <div>HIFI_HL_Standby</div> Command Parameter(s) : <div>             HIFI_BB_ID            HP001197           </div> TC Control Flags : <div> <div>GBM IL DSE</div> <div>--Y -- ---</div> </div> Subsch. ID : 70 Det. descr. : Send single command to switch LCU to standby	HC081289  E920001 <hex>	

HifiManCmdSetIntoStandby\_I  
 File: H\_FCP\_HIF\_C2S1.xls  
 Author: R. Biggins



Step No.	Time	Activity/Remarks	TC/TLM	Display/ Branch
		Verify Telemetry HL_MODE_S HM258194	= standby1	AND=ZAZ9C999
4		Set default OBSID/BBID		Next Step: END
	ET=+ UT=+00.00.00	HIFI_Set_OBS_ID HIFI_Set_OBS_ID Command Parameter(s) : HIFI_BB_ID HP001197 HIFI_OBS_ID HP000197 TC Control Flags : GBM IL DSE --Y -- -- Subsch. ID : 70 Det. descr. : Set Observation-ID and Building-Block-ID	HC014289 0 <hex> (Def) 0 <hex> (Def)	
		Verify Telemetry BB_ID_per_hk HM004190	= 0 <hex>	AND=ZAZ9C999
		Verify Telemetry OBS_ID_per_hk HM003190	= 0 <hex>	AND=ZAZ9C999
End of Procedure				