

HifiManCmdRebootICU
 File: H_FCP_HIF_BOOT.xls
 Author: R. Biggins



Procedure Summary

Objectives

The objective of this procedure is to reboot the ICU OBSW using the image stored in one of the EEPROM partitions

Based on procedure:
 HifiManCmdRebootICU (v1)

Summary of Constraints

Spacecraft Configuration

Start of Procedure

End of Procedure

Reference File(s)

Input Command Sequences

Output Command Sequences
 HFHBOOT

Referenced Displays

ANDs GRDs SLDs
 ZAZ9C999

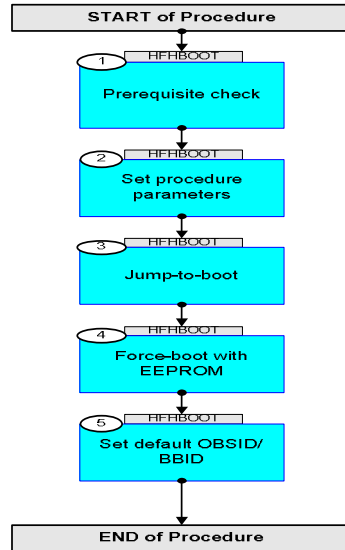
Configuration Control Information

DATE	FOP ISSUE	VERSION	MODIFICATION DESCRIPTION	AUTHOR	SPR REF
24/08/2010	3.1	1	Created	R. Biggins	

HifiManCmdRebootICU
File: H_FCP_HIF_BOOT.xls
Author: R. Biggins



Procedure Flowchart Overview



HifiManCmdRebootICU
 File: H_FCP_HIF_BOOT.xls
 Author: R. Biggins



Step No.	Time	Activity/Remarks	TC/TLM	Display/ Branch
Beginning of Procedure				
TC Seq. Name : HFHBOOT (Reboot ICU) TimeTag Type: B Sub Schedule ID: <input type="checkbox"/>				
1		Prerequisite check		Next Step: 2
1.1		HSC/ICC input		<input type="checkbox"/>
		Verify that the HSC/ICC has supplied a valid OBSID value: OBS_ID = 0xnnnn nnnn		
		Verify that the HSC/ICC has supplied a valid EEPROM partition to be used: EPR_PART = 1 or 2		
		WARNING: Verify with HIFI that the BSW and the targeted EEPROM copies are non-corrupted.		
2		Set procedure parameters		Next Step: 3
	ET=+ UT=+00.00.00	HIFI_Set_OBS_ID Command Parameter(s) : HIFI_BB_ID HP001197 HIFI_OBS_ID HP000197 TC Control Flags : GBM IL DSE --Y -- --- Subsch. ID : 70 Det. descr. : Set Observation-ID and Building-Block-ID	HIFI_Set_OBS_ID HC014289 1EF20001 <hex> OBS_ID	
		Verify Telemetry BB_ID_per_hk HM004190	= 1EF20001 <hex>	AND=ZAZ9C999
		Verify Telemetry OBS_ID_per_hk HM003190	OBS_ID	AND=ZAZ9C999
3		Jump-to-boot		Next Step: 4

HifiManCmdRebootICU
 File: H_FCP_HIF_BOOT.xls
 Author: R. Biggins



Step No.	Time	Activity/Remarks	TC/TLM	Display/ Branch
	ET=+ UT=+00.00.00	HIFI_jump_to_boot HIFI_jump_to_boot TC Control Flags : Subsch. ID : 70 Det. descr. : Start the boot-software GBM IL DSE --Y -- ---	HC166289	
		Verify that that no (1,8) has been generated		
4		Force-boot with EEPROM		Next Step: 5
	ET=+ UT=+00.00.05	HIFI_force_bootpartition HIFI_force_bootpartition Command Parameter(s) : HIF_partition_ID HP228197 TC Control Flags : Subsch. ID : 70 Det. descr. : Load OBS-image from specified EEPROM partition and boot GBM IL DSE --Y -- ---	HC163289 EPR_PART	
		Verify: Verify that HIFI HK telemetry packets (3,25,1025) - HIFI_PERIODIC_HK - are arriving once every 4 seconds.		
5		Set default OBSID/BBID		Next Step: END
	ET=+ UT=+00.00.01	HIFI_Set_OBS_ID HIFI_Set_OBS_ID Command Parameter(s) : HIFI_BB_ID HP001197 HIFI_OBS_ID HP000197 TC Control Flags : Subsch. ID : 70 Det. descr. : Set Observation-ID and Building-Block-ID GBM IL DSE --Y -- ---	HC014289 0 <hex> (Def) 0 <hex> (Def)	
		Verify Telemetry BB_ID_per_hk HM004190	= 0 <hex>	AND=ZAZ9C999
		Verify Telemetry OBS_ID_per_hk HM003190	= 0 <hex>	AND=ZAZ9C999
End of Procedure				