

PCS Subsystem Checkout  
 File: H\_FCP\_EPS\_CHECK.xls  
 Author: E. Picallo



## Procedure Summary

### Objectives

This procedure describes the steps needed to verify the overall Power Control Subsystem status in all S/C modes.

### Summary of Constraints

WARNING: the the telemetry parameter that are part of a periodic housekeeping packet (P1, P4 or P64), are downlinked only when the telemetry bit rate is more then 5 kbps.

### Spacecraft Configuration

#### Start of Procedure

CDMU in default configuration.

#### End of Procedure

CDMU in default configuration.

### Reference File(s)

#### Input Command Sequences

#### Output Command Sequences

### Referenced Displays

ANDs	GRDs	SLDs
ZAZ7H999		
WALC1584		
WALC2584		
WALC3584		
WAHT1584		
WAHT2584		
WAHT3584		
ZAZ7K999		
ZAZ7L999		

### Configuration Control Information

DATE	FOP ISSUE	VERSION	MODIFICATION DESCRIPTION	AUTHOR	SPR REF
28/01/08		1	Created	E. Picallo	
17/06/08	1	2	Change to use ANDs	E. Picallo	

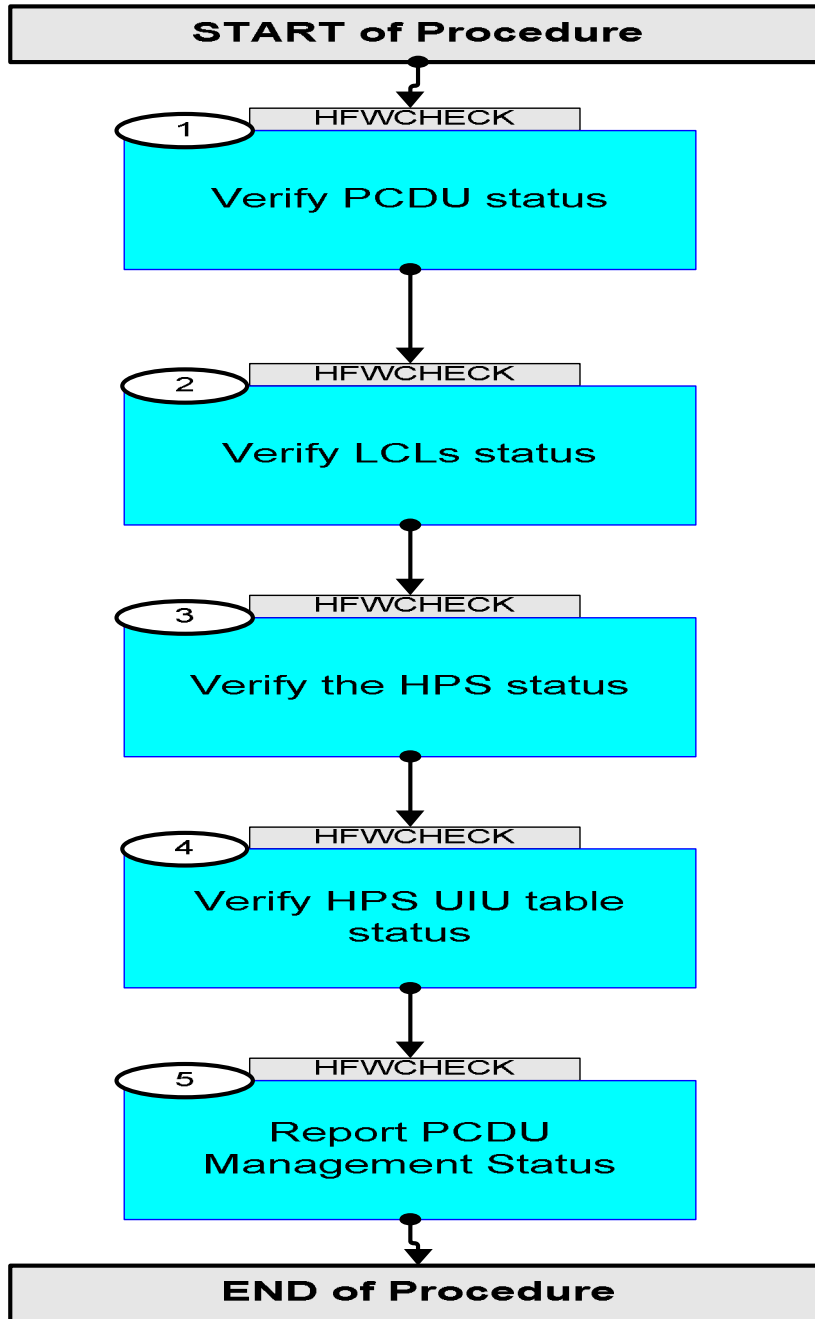
PCS Subsystem Checkout  
 File: H\_FCP\_EPS\_CHECK.xls  
 Author: E. Picallo



22/10/08		3	Refer to file "H_ANDs check form_EPS/TCS" added	E. Picallo	
23/12/08		4	H_ANDs check form_EPS/TCS.xls attached	E. Picallo	
09/01/09	2	5	CDMU ASW V3.8 and BSW V2.4 alignment	E. Picallo	
27/02/09	2.1	6	Updated with H-P Flight Satellite Configuration_v2.xls inputs	E. Picallo	
30/03/09		7	Launch Mode config updated according to H-P-2-ASP-TS-1780 issue 2	E. Picallo	
17/04/09	2.3	8	ISAs_I in LM , CRSs_I and HPSs_I updated	E. Picallo	
05/05/09	2.4	9	TM WM309565 description updated	E. Picallo	
12/04/10	3	10	GRYO B in use HIFI redundant side in use	E. Picallo	



Procedure Flowchart Overview

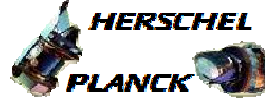


PCS Subsystem Checkout  
 File: H\_FCP\_EPS\_CHECK.xls  
 Author: E. Picallo



Step No.	Time	Activity/Remarks	TC/TLM	Display/ Branch
<b>Beginning of Procedure</b>				
<p><i>TC Seq. Name :HFWCHECK (PCS Subsystem Check)</i></p> <p><i>TimeTag Type: N</i>  <i>Sub Schedule ID:</i></p> <p style="text-align: center;">□</p>				
1		Verify PCDU status		Next Step: 2
		<b>Refer to attachments at the back of this document based on the file "H_ANDs check form_PCS.xls" to check the expected values according to the current spacecraft mode.</b>		
		Refer to Checkform ZAZ7H999 at the back of this document		ANDCK
2		Verify LCLs status		Next Step: 3
		Refer to Checkform WALC1584 at the back of this document		ANDCK
		Refer to Checkform WALC2584 at the back of this document		ANDCK
		Refer to Checkform WALC3584 at the back of this document		ANDCK
		<b>Refer to attachments at the back of this document based on the file "H_ANDs check form_PCS.xls" to check the expected values according to the current spacecraft mode.</b>		
3		Verify the HPS status		Next Step: 4
		Refer to Checkform WAHT1584 at the back of this document		ANDCK
		Refer to Checkform WAHT2584 at the back of this document		ANDCK
		Refer to Checkform WAHT3584 at the back of this document		ANDCK
		<b>Refer to attachments at the back of this document based on the file "H_ANDs check form_TCS" to check the expected values according to the current spacecraft mode.</b>		
4		Verify HPS UIU table status		Next Step: 5

PCS Subsystem Checkout  
 File: H\_FCP\_EPS\_CHECK.xls  
 Author: E. Picallo



Step No.	Time	Activity/Remarks	TC/TLM	Display/ Branch
		Refer to Checkform ZAZ7K999 at the back of this document		ANDCK
		Refer to Checkform ZAZ7L999 at the back of this document		ANDCK
		<b>Refer to attachments at the back of this document based on the file "H_ANDs check form_TCS" to check the expected values according to the current spacecraft mode.</b>		
5		<i>Report PCDU Management Status</i>		Next Step: END
		Execute Procedure: <b>H_FCP_EPS_REPO</b> PCDU Management Status Report		
		<b>The expected status of the PCDU Management function is running.</b>		
<b>End of Procedure</b>				

PCS Subsystem Checkout  
 File: H\_FCP\_EPS\_CHECK.xls  
 Author: E. Picallo



ZAZ7H999 / EPS Generic Status Param 1 of 1

ID	DESCRIPTION	VALUE	UNIT	ID	DESCRIPTION	VALUE	UNIT
WMT02565	TM_VBATT_BDR_1			WMT03565	TM_VBATT_BDR_2		
WMT06565	TM1_VBUS			WMT07565	TM2_VBUS		
WMT04565	TM1_MEA_S3R_BDR			WMT05565	TM2_MEA_S3R_BDR		
WMT14565	TM_ISA_S3R_1			XD032992	ISA		
WMT15565	TM_ISA_S3R_2			XD031992	ILOAD_EXT		
WMT16565	TM_ISA_S3R_3			XD033992	ITCS		
WMT10565	TM_Icharg1			WMT11565	TM_Icharg2		
WMT08565	TM_IOUT_BDR1			WMT09565	TM_IOUT_BDR2		
WMT12565	TM_Idisch_BDR1			WMT13565	TM_Idisch_BDR2		
WMT1A565	1553_BDR1_OnOff			WMT2A565	BDR1_1553CmdSts		
WMT1B565	1553_BDR2_OnOff			WMT2B565	BDR2_1553CmdSts		
WMB06565	BDR1_InpSwMon			WMT1C565	DOD_LEVEL		
WMB07565	BDR2_InpSwMon						
WMT3A565	BCR1_1553CmdSts			WMT1H565	BCR1_OCP_STS		
WMT3B565	BCR2_1553CmdSts			WMT1J565	BCR2_OCP_STS		
WMT3C565	BCR3_1553CmdSts			WMT1K565	BCR3_OCP_STS		
WMT1E565	BCR1_LIM_STS			WMT1D565	EoC_Level_STS		
WMT1F565	BCR2_LIM_STS						
WMT1G565	BCR3_LIM_STS						
WMT1M565	DNEL_ARM_STS			ZMP13999	Separ Strap1		
WMT1L565	DNEL_STS			ZMP14999	Separ Strap2		
WMB02565	PCDU_1553_M1_N			WMB03565	PCDU_1553_M2_N		
WMB04565	PCDU_1553_M1_R			WMB05565	PCDU_1553_M2_R		
DEFAG160	PCDUA_On_Off			DEFB1160	PCDUB_On_Off		
DEFAG160	PCDUA_Val_Inval			DEFB5160	PCDUB_Val_Inval		
DEFDM160	PCDU_No_Re_RTA			WMB01565	PCDU_Temp_1		
WMB01568	BATTERY_TEMP_1			WMB03568	BATTERY_TEMP_3		
WMB02568	BATTERY_TEMP_2			WMB04568	BATTERY_TEMP_4		
WMB01569	SA_Pan1_Temp1_N			WMB04569	SA_Pan1_Temp1_R		
WMB02569	SA_Pan1_Temp2_N			WMB05569	SA_Pan1_Temp2_R		
WMB03569	SA_Pan1_Temp3_N			WMB06569	SA_Pan1_Temp3_R		

PCS Subsystem Checkout  
 File: H\_FCP\_EPS\_CHECK.xls  
 Author: E. Picallo



WALC1584 / PCDU FCL-LCL STS V and I 1 of 3

ID	DESCRIPTION	VALUE	UNIT	ID	DESCRIPTION	VALUE	UNIT
WM802565	CdmuHotA_FCL1_I			WM22C565	CRS1_L15_S		
WM803565	CdmuHotA_FCL1_V			WM208565	CRS1_L15_I		
WM302565	CdmuHotB_FCL2_I			WM92C565	Xpnd2Tx_L16_S		
WM303565	CdmuHotB_FCL2_V			WM908565	Xpnd2Tx_L16_I		
WM702565	Xpnd1_Rx_FCL3_I			WMA2H565	CBH_N_L17_S		
WM703565	Xpnd1_Rx_FCL3_V			WMA13565	CBH_N_L17_I		
WM402565	Xpnd2_Rx_FCL4_I			WM12H565	CBH_R_L18_S		
WM403565	Xpnd2_Rx_FCL4_V			WM113565	CBH_R_L18_I		
WM602565	AccHotA_FCL5_I			WM32B565	SREM_L19_S		
WM603565	AccHotA_FCL5_V			WM307565	Srem_L19_I		
WM502565	AccHotB_FCL6_I			WM82B565	VMC_L20_S		
WM503565	AccHotB_FCL6_V			WM807565	VMC_L20_I		
WMA02565	EmrHtr1R_FCL7_I			WMA2C565	STR_1_L21_S		
WMA03565	EmrHtr1R_FCL7_V			WMA08565	STR_1_L21_I		
WM102565	EmrHtr1N_FCL8_I			WM12C565	STR_2_L22_S		
WM103565	EmrHtr1N_FCL8_V			WM108565	STR_2_L22_I		
				WM12D565	Xpnd1Tx_L23_S		
				WM109565	Xpnd1Tx_L23_I		
				WMA2D565	CRS2_L24_S		
				WMA09565	CRS2_L24_I		
				WM12B565	SpireLL_N_L25_S		
WM32C565	SpirHsdN_L11_1S						
WM32J565	SpirHsdN_L11_2S			WMA2B565	SpireLL_R_L26_S		
WM308565	SpireHsN_L11_I						
WM82C565	SpirHsdR_L12_1S			WM82D565	PacsB_N_L27_1S		
WM82J565	SpirHsdR_L12_2S			WM82K565	PacsB_N_L27_2S		
WM808565	SpireHsdR_L12_I			WM809565	PacsB_N_L27_I		
WM92A565	GyroA_L13_S			WM32D565	PacsB_R_L28_1S		
WM906565	GyroA_L13_I			WM32K565	PacsB_R_L28_2S		
WM22A565	GyroB_L14_S			WM309565	PacsB_R_L28_I		
WM206565	Gyro_B_L14_I						

PCS Subsystem Checkout  
 File: H\_FCP\_EPS\_CHECK.xls  
 Author: E. Picallo



WALC2584 / PCDU FCL-LCL STS V and I 2 of 3

ID	DESCRIPTION	VALUE	UNIT	ID	DESCRIPTION	VALUE	UNIT
WM32E565	Unused_L29_1S			WM82A565	HiFiWEV_L43_S		
WM32L565	Unused_L29_2S			WM806565	HiFiWEH_L43_I		
				WM32A565	HiFiWEV_L44_S		
WM82E565	Unused_L30_1S			WM306565	HiFiWEV_L44_I		
WM82L565	Unused_L30_2S			WM22D565	RcsThrsA_L45_1S		
				WM22J565	RcsThrsA_L45_2S		
WM22B565	CdmuColdA_L31_S			WM209565	RcsThrsA_L45_I		
WM207565	CdmuColdA_L31_I			WM92D565	RcsThrsB_L46_1S		
WM92B565	CdmuColdB_L32_S			WM92J565	RcsThrsB_L46_2S		
WM907565	CdmuColdB_L32_I			WM909565	RcsThrsB_L46_I		
WM62B565	AccColdA_L33_S			WM12E565	RcsLvA_L47_1S		
WM607565	AccColdA_L33_I			WM12J565	AccLvA_L47_2S		
WM52B565	AccColdB_L34_S			WM110565	AccLvA_L47_I		
WM507565	AccColdB_L34_I			WMA2E565	AccLvB_L48_1S		
WM52A565	PacsS_N_L35_S			WMA2J565	AccLvB_L48_2S		
WM506565	PacsS_N_L35_I			WMA10565	AccLvB_L48_I		
WM62A565	PacsS_R_L36_S			WM22E565	Twta_1_L49_1S		
WM606565	PacsS_R_L36_I			WM22K565	Twta_1_L49_2S		
WM12A565	Ccu_A_L37_S			WM210565	Twta_1_L49_I		
WM106565	Ccu_A_L37_I			WM92E565	Twta_2_L50_1S		
WMA2A565	Ccu_B_L38_S			WM92K565	Twta_2_L50_2S		
WMA06565	Ccu_B_L38_I			WM910565	Twta_2_L50_I		
WM42A565	Unused_L39_S			WM42C565	SpirHsfN_L51_1S		
				WM42J565	SpirHsfN_L51_2S		
WM72A565	Unused_L40_S			WM408565	SpirHsfN_L51_I		
				WM72C565	SpirHsfR_L52_1S		
WM72B565	PacsD_N_L41_S			WM72J565	SpirHsfR_L52_2S		
WM707565	PacsD_N_L41_I			WM708565	SpirHsfR_L52_I		
WM42B565	PacsD_R_L42_S			WM72D565	HiFiLCuN_L53_1S		
WM407565	PacsD_R_L42_I			WM72K565	HiFiLCuN_L53_2S		
				WM709565	HiFiLCU_N_L53_I		



PCS Subsystem Checkout  
 File: H\_FCP\_EPS\_CHECK.xls  
 Author: E. Picallo



WALC3584 / PCDU FCL-LCL STS V and I 3 of 3

ID	DESCRIPTION	VALUE	UNIT	ID	DESCRIPTION	VALUE	UNIT
WM42D565	HiFilcuR_L54_1S			WM52D565	HiFilcuN_L64_1S		
WM42K565	HiFilcuR_L54_2S			WM52K565	HiFilcuN_L64_2S		
WM409565	HiFiLCU_R_L54_I			WM509565	HiFiICU_N_L64_I		
WM22F565	Rwl_1_L55_1S			WM52E565	PacsMec1_L65_1S		
WM22L565	Rwl_1_L55_2S			WM52L565	PacsMec1_L65_2S		
WM211565	Rwl_1_L55_I			WM510565	PacsMec1_L65_I		
WM92F565	Rwl_2_L56_1S			WM52F565	LouDecH3_L66_1S		
WM92L565	Rwl_2_L56_2S			WM52M565	LouDecH3_L66_2S		
WM911565	Rwl_2_L56_I						
WM12F565	Rwl_3_L57_1S			WM62C565	HiFiHRV_L67_1S		
WM12K565	Rwl_3_L57_2S			WM62J565	HiFiHRV_L67_2S		
WM111565	Rwl_3_L57_I			WM608565	HiFiHRV_L67_I		
WMA2F565	Rwl_4_L58_1S			WM62D565	HiFilcuR_L68_1S		
WMA2K565	Rwl_4_L58_2S			WM62K565	HiFilcuR_L68_2S		
WMA11565	Rwl_4_L58_I			WM609565	HiFiICU_R_L68_I		
WM42F565	LouDecH1_L59_1S			WM62E565	PacsMec2_L69_1S		
WM42M565	LouDecH1_L59_2S			WM62L565	PacsMec2_L69_2S		
				WM610565	PacsMec2_L69_I		
WM42E565	Unused_L60_1S			WM62F565	Unused_L70_1S		
WM42L565	Unused_L60_2S			WM62M565	Unused_L70_2S		
WM72F565	LouDecH2_L61_1S			WM32F565	NCA_N_L71_1_S		
WM72M565	LouDecH2_L61_2S			WM32M565	NCA_N_L71_2_S		
WM72E565	Unused_L62_1S			WM311565	NCA_N_L71_I		
WM72L565	Unused_L62_2S						
WM52C565	HiFiHRH_L63_1S			WM82F565	NCA_R_L72_1_S		
WM52J565	HiFiHRH_L63_2S			WM82M565	NCA_R_L72_2_S		
WM508565	HiFiHRH_L63_I						
				WM811565	NCA_R_L72_I		

PCS Subsystem Checkout  
 File: H\_FCP\_EPS\_CHECK.xls  
 Author: E. Picallo



WAHT1584 / PCDU Heather STS and I 1 of 3

ID	DESCRIPTION	VALUE	UNIT	ID	DESCRIPTION	VALUE	UNIT
WM12G565	GRP1_HPS_STS			WM32G565	GRP4_HPS_STS		
WM112565	GRP1_HPS_ITLM			WM312565	GRP4_HPS_ITLM		
WM104565	GRP1_Therm_TLM			WM304565	GRP4_Therm_TLM		
WM11A565	Decon1_G1H1_S			WM31A565	Decon5_G4H1_S		
WM11B565	Xpnd2_G1H2_S			WM31B565	FHWOV_G4H2_S		
WM11C565	FcvA1B_G1H3_S			WM31C565	RCSpip_G4H3_S		
WM11D565	FcvC2B_G1H4_S			WM31D565	FcvA1A_G4H4_S		
WM11E565	RCSpipG1H5_S			WM31E565	FcvC2A_G4H5_S		
WM11F565	Xpnd1_G1H6_S			WM31F565	RCSpipG4H6_S		
WM22G565	GRP2_HPS_STS			WM32H565	GRP5_HPS_STS		
WM212565	GRP2_HPS_ITLM			WM313565	GRP5_HPS_ITLM		
WM204565	GRP2_Therm_TLM			WM305565	GRP5_Therm_TLM		
WM21A565	Decon3_G2H1_S			WM31G565	CRS2_G5H1_S		
WM21B565	FcvC1B_G2H2_S			WM31H565	FHHRH_G5H2_S		
WM21C565	FcvA2B_G2H3_S			WM31J565	FhWevlcuG5H3_S		
WM21D565	FcvC4B_G2H4_S			WM31K565	FcvC3B_G5H4_S		
WM21E565	FpdFps_G2H5_S			WM31L565	RCSpipG5H5_S		
WM21F565	tanks_G2H6_S			WM31M565	PtLflv12_G5H6_S		
WM22H565	GRP3_HPS_STS			WM42G565	GRP6_HPS_STS		
WM213565	GRP3_HPS_ITLM			WM412565	GRP6_HPS_ITLM		
WM205565	GRP3_Therm_TLM			WM404565	GRP6_Therm_TLM		
WM21G565	FPBOLC_G3H1_S			WM41A565	Decon7_G6H1_S		
WM21H565	CRS1_G3H2_S			WM41B565	RWA4_G6H2_S		
WM21J565	FPMECDEC_G3H3_S			WM41C565	RWA1_G6H3_S		
WM21K565	RCSpipG3H4_S			WM41D565	RWA3_G6H4_S		
WM21L565	CcuHsdHsfG3H5_S			WM41E565	FHWIV_G6H5_S		
WM21M565	GYRO_G3H6_S			WM41F565	RWA2_G6H6_S		

PCS Subsystem Checkout  
 File: H\_FCP\_EPS\_CHECK.xls  
 Author: E. Picallo



WAHT2584 / PCDU Heather STS and I 2 of 3							
ID	DESCRIPTION	VALUE	UNIT	ID	DESCRIPTION	VALUE	UNIT
WM42H565	GRP7_HPS_STS			WM62G565	GRP10_HPS_STS		
WM413565	GRP7_HPS_ITLM			WM612565	GRP10_HPS_ITLM		
WM405565	GRP7_Therm_TLM			WM604565	GRP10_Therm_TLM		
WM41G565	STR_G7H1_S			WM61A565	Decon2_G10H1_S		
WM41H565	BATTconG7H2_S			WM61B565	tank-Y_G10H2_S		
WM41J565	FHWOH_G7H3_S			WM61C565	FcvC4A_G10H3_S		
WM41K565	FHWEH_G7H4_S			WM61D565	FHLSU_G10H4_S		
WM41L565	FcvC1A_G7H5_S			WM61E565	STR1baffG10H5_S		
WM41M565	FcvA2A_G7H6_S			WM61F565	tank+Y_G10H6_S		
WM52G565	GRP8_HPS_STS			WM62H565	GRP11_HPS_STS		
WM512565	GRP8_HPS_ITLM			WM613565	GRP11_HPS_ITLM		
WM504565	GRP8_Therm_TLM			WM605565	GRP11_Therm_TLM		
WM51A565	FHHRV_G8H1_S			WM61G565	FHHRV_G11H1_S		
WM51B565	FcvC3A_G8H2_S			WM61H565	FcvC3A_G11H2_S		
WM51C565	RCSpipG8H3_S			WM61J565	RCSpipG11H3_S		
WM51D565	STR2baffG8H4_S			WM61K565	STR2baffG11H4_S		
WM51E565	RCSpipG8H5_S			WM61L565	RCSpipG11H5_S		
WM51F565	FHLCU_G8H6_S			WM61M565	FHLCU_G11H6_S		
WM52H565	GRP9_HPS_STS			WM72G565	GRP12_HPS_STS		
WM513565	GRP9_HPS_ITLM			WM712565	GRP12_HPS_ITLM		
WM505565	GRP9_Therm_TLM			WM704565	GRP12_Therm_TLM		
WM51G565	Decon8_G9H1_S			WM71A565	STR_G12H1_S		
WM51H565	tank-Y_G9H2_S			WM71B565	BATTconG12H2_S		
WM51J565	FcvC4A_G9H3_S			WM71C565	FHWOH_G12H3_S		
WM51K565	FHLSU_G9H4_S			WM71D565	FHWEH_G12H4_S		
WM51L565	STR1baffG9H5_S			WM71E565	FcvC1A_G12H5_S		
WM51M565	tank+Y_G9H6_S			WM71F565	FcvA2A_G12H6_S		

PCS Subsystem Checkout  
 File: H\_FCP\_EPS\_CHECK.xls  
 Author: E. Picallo



WAHT3584 / PCDU Heather STS and I 3 of 3

ID	DESCRIPTION	VALUE	UNIT	ID	DESCRIPTION	VALUE	UNIT
WM72H565	GRP13_HPS_STS			WM92G565	GRP16_HPS_STS		
WM713565	GRP13_HPS_ITLM			WM912565	GRP16_HPS_ITLM		
WM705565	GRP13_Therm_TLM			WM904565	GRP16_Therm_TLM		
WM71G565	Grp13Heat1_S			WM91A565	FPBOLC_G16H1_S		
WM71H565	RWA4_G13H2_S			WM91B565	CRS1_G16H2_S		
WM71J565	RWA1_G13H3_S			WM91C565	FPMECDEC_G16H3s		
WM71K565	RWA3_G13H4_S			WM91D565	RCSpipG16H4_S		
WM71L565	FHWIV_G13H5_S			WM91E565	CcuHdHf_G16H5_S		
WM71M565	RWA2_G13H6_S			WM91F565	GYRO_G16H6_S		
WM82G565	GRP14_HPS_STS			WM92H565	GRP17_HPS_STS		
WM812565	GRP14_HPS_ITLM			WM913565	GRP17_HPS_ITLM		
WM804565	GRP14_Therm_TLM			WM905565	GRP17_Therm_TLM		
WM81A565	CRS2_G14H1_S			WM91G565	Decon4_G17H1_S		
WM81B565	FHHRH_G14H2_S			WM91H565	FcvC1B_G17H2_S		
WM81C565	FhWevlcuG14H3_S			WM91J565	FcvA2B_G17H3_S		
WM81D565	FcvC3B_G14H4_S			WM91K565	FcvC4B_G17H4_S		
WM81E565	RCSpipG14H5_S			WM91L565	FpdFps_G17H5_S		
WM81F565	PLFLv12G14H6_S			WM91M565	tanks_G17H6_S		
WM82H565	GRP15_HPS_STS			WMA2G565	GRP18_HPS_STS		
WM813565	GRP15_HPS_ITLM			WMA12565	GRP18_HPS_ITLM		
WM805565	GRP15_Therm_TLM			WMA04565	GRP18_Therm_TLM		
WM81G565	Decon6_G15H1_S			WMA1A565	Decon9_G18H1_S		
WM81H565	FHWOV_G15H2_S			WMA1B565	XPND2_G18H2_S		
WM81J565	RCSpipG15H3_S			WMA1C565	FcvA1B_G18H3_S		
WM81K565	FcvA1A_G15H4_S			WMA1D565	FcvC2B_G18H4_S		
WM81L565	FcvC2A_G15H5_S			WMA1E565	RCSpipG18H5_S		
WM81M565	RCSpipG15H6_S			WMA1F565	XPND1_G18H6_S		

PCS Subsystem Checkout  
 File: H\_FCP\_EPS\_CHECK.xls  
 Author: E. Picallo



ZAZ7K999 / EPS\_UIU1

ID	DESCRIPTION	VALUE	UNIT	ID	DESCRIPTION	VALUE	UNIT
DEG77170	Hps1FuncSts			DEG73170	Hps18FuncSts		
DEG79170	Hps1Use			DEG75170	Hps18Use		
DEG78170	Hps1LogSts			DEG74170	Hps18LogSts		
DEG76170	Hps1FailSts			DEG72170	Hps18FailSts		
DEG81170	Hps2FuncSts			DEG69170	Hps17FuncSts		
DEG83170	Hps2Use			DEG71170	Hps17Use		
DEG82170	Hps2LogSts			DEG70170	Hps17LogSts		
DEG80170	Hps2FailSts			DEG68170	Hps17FailSts		
DEG85170	Hps3FuncSts			DEG65170	Hps16FuncSts		
DEG87170	Hps3Use			DEG67170	Hps16Use		
DEG86170	Hps3LogSts			DEG66170	Hps16LogSts		
DEG84170	Hps3FailSts			DEG64170	Hps16FailSts		
DEG89170	Hps4FuncSts			DEG61170	Hps15FuncSts		
DEG91170	Hps4Use			DEG63170	Hps15Use		
DEG90170	Hps4LogSts			DEG62170	Hps15LogSts		
DEG88170	Hps4FailSts			DEG60170	Hps15FailSts		
DEG93170	Hps5FuncSts			DEG57170	Hps14FuncSts		
DEG95170	Hps5Use			DEG59170	Hps14Use		
DEG94170	Hps5LogSts			DEG58170	Hps14LogSts		
DEG92170	Hps5FailSts			DEG56170	Hps14FailSts		
DEG97170	Hps6FuncSts			DEG53170	Hps13FuncSts		
DEG99170	Hps6Use			DEG55170	Hps13Use		
DEG98170	Hps6LogSts			DEG54170	Hps13LogSts		
DEG96170	Hps6FailSts			DEG52170	Hps13FailSts		
DEH01170	Hps7FuncSts			DEG49170	Hps12FuncSts		
DEH03170	Hps7Use			DEG51170	Hps12Use		
DEH02170	Hps7LogSts			DEG50170	Hps12LogSts		
DEH00170	Hps7FailSts			DEG48170	Hps12FailSts		
DEH05170	Hps8FuncSts			DEG45170	Hps11FuncSts		
DEH07170	Hps8Use			DEG47170	Hps11Use		
DEH06170	Hps8LogSts			DEG46170	Hps11LogSts		
DEH04170	Hps8FailSts			DEG44170	Hps11FailSts		

PCS Subsystem Checkout  
 File: H\_FCP\_EPS\_CHECK.xls  
 Author: E. Picallo



ZAZ7L999 / EPS\_UIU2

ID	DESCRIPTION	VALUE	UNIT	ID	DESCRIPTION	VALUE	UNIT
DEH09170	Hps9FuncSts			DEG41170	Hps10FuncSts		
DEH11170	Hps9Use			DEG43170	Hps10Use		
DEH10170	Hps9LogSts			DEG42170	Hps10LogSts		
DEH08170	Hps9FailSts			DEG40170	Hps10FailSts		
DEG03170	Pcdu1FuncSts			DEG02170	Pcdu2FuncSts		
DEN00170	Pcdu1Use			DEN03170	Pcdu2Use		
DEN01170	Pcdu1LogSts			DEN04170	Pcdu2LogSts		
DEN02170	Pcdu1FailSts			DEN05170	Pcdu2FailSts		
				DEN74170	Hgps1FuncSts		
				DEN75170	Hgps2FuncSts		
				DEN76170	Hgps3FuncSts		
				DEN77170	Hgps4FuncSts		
				DEN78170	Hgps5FuncSts		
				DEN79170	Hgps6FuncSts		
				DEN80170	Hgps7FuncSts		
				DEN81170	Hgps8FuncSts		
				DEN82170	Hgps9FuncSts		
				DEN83170	Hgps10FuncSts		
				DEN84170	Hgps11FuncSts		
				DEN85170	Hgps12FuncSts		
				DEN86170	Hgps13FuncSts		
				DEN87170	Hgps14FuncSts		
				DEN88170	Hgps15FuncSts		
				DEN89170	Hgps16FuncSts		
				DEN90170	Hgps17FuncSts		
				DEN91170	Hgps18FuncSts		

PCS Subsystem Checkout

File: H\_FCP\_EPS\_CHECK.xls

Author: E. Picallo

DPC_NAME	LM	SAM	NM	SAM OW	EAM	SM
WMT02565	TM_VBATT_BDR_1	25.4V / >24.3	>23.3 V (**)	25.4V ±10% (***)	25.4V ±10% (***)	25.4V ±10% (***)
WMT03565	TM_VBATT_BDR_2	25.4V / >24.3	24V ±10% (**)	25.4V ±10% (***)	25.4V ±10% (***)	25.4V ±10% (***)
WMT06565	TM1_VBUS	[28.1 , 28.2]	[28.1 , 28.2]	[28.1 , 28.2]	[28.1 , 28.2]	[28.1 , 28.2]
WMT07565	TM2_VBUS	[28.1 , 28.2]	[28.1 , 28.2]	[28.1 , 28.2]	[28.1 , 28.2]	[28.1 , 28.2]
WMT04565	TM1_MEA_S3R_BDR	[8.88 , 20.76]	[8.88 , 20.76]	[8.88 , 20.76]	[8.88 , 20.76]	[8.88 , 20.76]
WMT05565	TM2_MEA_S3R_BDR	[8.88 , 20.76]	[8.88 , 20.76]	[8.88 , 20.76]	[8.88 , 20.76]	[8.88 , 20.76]
WMT12565	TM_Idisch_BDR1	0 / [2.5 , 6.5]	[0,10]	[0,10]	[0,10]	[0,10]
WMT13565	TM_Idisch_BDR2	0 / [2.5 , 6.5]	[0,10]	[0,10]	[0,10]	[0,10]
WMT08565	TM_IOUT_BDR1	0 / [2.5 , 6.5]	< 7	< 7	< 7	< 7
WMT09565	TM_IOUT_BDR2	0 / [2.5 , 6.5]	< 7	< 7	< 7	< 7
WMT10565	TM_Icharg1	0	< 5.78A	[0,9]	[0,9]	[0,9]
WMT11565	TM_Icharg2	0	< 5.78A	[0,9]	[0,9]	[0,9]
WMT14565	TM_ISA_S3R_1	[5.4 , 6.6] / 0 (iii)	[18.46 , 19.47] (iii)	[15.98 , 16.8] (iii)	[18.46 , 19.47] (iii)	[15.98 , 16.8] (iii)
WMT15565	TM_ISA_S3R_2	[5.4 , 6.6] / 0 (iii)	[18.46 , 19.47] (iii)	[15.98 , 16.8] (iii)	[18.46 , 19.47] (iii)	[15.98 , 16.8] (iii)
WMT16565	TM_ISA_S3R_3	[5.4 , 6.6] / 0 (iii)	[18.46 , 19.47] (iii)	[15.98 , 16.8] (iii)	[18.46 , 19.47] (iii)	[15.98 , 16.8] (iii)
WMB02565	PCDU_1553_M1_N	ON	ON	ON	ON	OFF
WMB04565	PCDU_1553_M1_R	ON	ON	ON	ON	OFF
WMB03565	PCDU_1553_M2_N	OFF	OFF	OFF	OFF	OFF
WMB05565	PCDU_1553_M2_R	OFF	OFF	OFF	OFF	ON
DEFAG160	PCDUA_On_Off	ON	ON	ON	ON	OFF
DEFAK160	PCDUA_Val_Inval	VALID	VALID	VALID	VALID	INVALID
DEFB1160	PCDUB_On_Off	ON	ON	ON	ON	ON
DEFB5160	PCDUB_Val_Inval	VALID	VALID	VALID	VALID	VALID
DEFDM160	PCDU_No_Re_RTA	NOMINAL	NOMINAL	NOMINAL	NOMINAL	REDUNDANT
WMB06565	BDR1_IngSwMon	> 2V	> 2V	> 2V	> 2V	> 2V
WMB07565	BDR2_IngSwMon	> 2V	> 2V	> 2V	> 2V	> 2V
WMT15565	DOD_LEVEL	20V thresh- LD	20V thresh- LD	20V thresh- LD	20V thresh- LD	20V thresh- LD
WMT10565	EoC_Level_STS	High (=25.4V)	High (=25.4V)	High (=25.4V)	High (=25.4V)	High (=25.4V)
WMT15565	DNEL_STS	NOT DISCONNECT (iii)	NOT DISCONNECT	NOT DISCONNECT	NOT DISCONNECT	DISCONNECTION
WMT16565	DNEL_ARM_STS	NOT ARMED	NOT ARMED	NOT ARMED	NOT ARMED	NOT ARMED
WMT36565	BCR1_1553CmdSts	ENABLED	ENABLED	ENABLED	ENABLED	ENABLED
WMT35565	BCR2_1553CmdSts	ENABLED	ENABLED	ENABLED	ENABLED	ENABLED
WMT30565	BCR3_1553CmdSts	ENABLED	ENABLED	ENABLED	ENABLED	ENABLED
WMT15565	BCR1_LIM_STS	ACTIVE	NOT ACTIVE	ACTIVE	ACTIVE	ACTIVE / NOT ACTIVE
WMT15565	BCR2_LIM_STS	ACTIVE	NOT ACTIVE	ACTIVE	ACTIVE	ACTIVE / NOT ACTIVE
WMT15565	BCR3_LIM_STS	ACTIVE	NOT ACTIVE	ACTIVE	ACTIVE	ACTIVE / NOT ACTIVE
WMT15565	BCR1_OCP_STS	NOT ACTIVE	NOT ACTIVE	NOT ACTIVE	NOT ACTIVE	NOT ACTIVE
WMT15565	BCR2_OCP_STS	NOT ACTIVE	NOT ACTIVE	NOT ACTIVE	NOT ACTIVE	NOT ACTIVE
WMT15565	BCR3_OCP_STS	NOT ACTIVE	NOT ACTIVE	NOT ACTIVE	NOT ACTIVE	NOT ACTIVE
WMT15565	1553_BDR1_OnOff	ON	ON	ON	ON	ON
WMT15565	1553_BDR2_OnOff	ON	ON	ON	ON	ON
WMT25565	BDR1_1553CmdSts	ON	ON	ON	ON	ON
WMT25565	BDR2_1553CmdSts	ON	ON	ON	ON	ON
WMB01565	PCDU_Temp_1	[-15° , 45°]	[-15° , 45°]	[-15° , 45°]	[-15° , 45°]	[-15° , 45°]
WMB01568	BATTERY_TEMP_1	[0° , 40°]	[0° , 40°]	[0° , 40°]	[0° , 40°]	[10° , +35°]
WMB02568	BATTERY_TEMP_2	[0° , 40°]	[0° , 40°]	[0° , 40°]	[0° , 40°]	[10° , +35°]
WMB03568	BATTERY_TEMP_3	[0° , 40°]	[0° , 40°]	[0° , 40°]	[0° , 40°]	[10° , +35°]
WMB04568	BATTERY_TEMP_4	[0° , 40°]	[0° , 40°]	[0° , 40°]	[0° , 40°]	[10° , +35°]
WMB01569	SA_Pan1_Temp1_N	[18 ° , 25 °]	[111° , 125°]	[111° , 125°]	[111° , 125°]	[111° , 125°]
WMB04569	SA_Pan1_Temp1_R	[18 ° , 25 °]	[111° , 125°]	[111° , 125°]	[111° , 125°]	[111° , 125°]
WMB02569	SA_Pan1_Temp2_N	[18 ° , 25 °]	[111° , 125°]	[111° , 125°]	[111° , 125°]	[111° , 125°]
WMB05569	SA_Pan1_Temp2_R	[18 ° , 25 °]	[111° , 125°]	[111° , 125°]	[111° , 125°]	[111° , 125°]
WMB03569	SA_Pan1_Temp3_N	[18 ° , 25 °]	[111° , 125°]	[111° , 125°]	[111° , 125°]	[111° , 125°]
WMB06569	SA_Pan1_Temp3_R	[18 ° , 25 °]	[111° , 125°]	[111° , 125°]	[111° , 125°]	[111° , 125°]
ZMP13999	Separ Strap1	NOT SEPARATED	SEPARATED	SEPARATED	SEPARATED	SEPARATED
ZMP14999	Separ Strap2	NOT SEPARATED	SEPARATED	SEPARATED	SEPARATED	SEPARATED

PCS Subsystem Checkout

File: H\_FCP\_EPS\_CHECK.xls

Author: E. Picallo

DPC_NUMBE	DPC_NAME	LM	SAM	NM	SAM OW	EAM	SM
WALC1584	WM802565	CdmuHotA_FCL1_I	[0.1 ; 0.86]	[0.1 ; 0.86]	[0.1 ; 0.86]	[0.1 ; 0.86]	[0.1 ; 0.86]
WALC1584	WM803565	CdmuHotA_FCL1_V	[26.3 ; 28.8]	[26.3 ; 28.8]	[26.3 ; 28.8]	[26.3 ; 28.8]	[26.3 ; 28.8]
WALC1584	WM302565	CdmuHotB_FCL2_I	[0.1 ; 0.86]	[0.1 ; 0.86]	[0.1 ; 0.86]	[0.1 ; 0.86]	[0.1 ; 0.86]
WALC1584	WM303565	CdmuHotB_FCL2_V	[26.3 ; 28.8]	[26.3 ; 28.8]	[26.3 ; 28.8]	[26.3 ; 28.8]	[26.3 ; 28.8]
WALC1584	WM702565	Xpnd1_Rx_FCL3_I	[0.20 ; 0.35]	[0.20 ; 0.35]	[0.20 ; 0.35]	[0.20 ; 0.35]	[0.20 ; 0.35]
WALC1584	WM703565	Xpnd1_Rx_FCL3_V	[26.3 ; 28.8]	[26.3 ; 28.8]	[26.3 ; 28.8]	[26.3 ; 28.8]	[26.3 ; 28.8]
WALC1584	WM402565	Xpnd2_Rx_FCL4_I	[0.20 ; 0.35]	[0.20 ; 0.35]	[0.20 ; 0.35]	[0.20 ; 0.35]	[0.20 ; 0.35]
WALC1584	WM403565	Xpnd2_Rx_FCL4_V	[26.3 ; 28.8]	[26.3 ; 28.8]	[26.3 ; 28.8]	[26.3 ; 28.8]	[26.3 ; 28.8]
WALC1584	WM602565	AccHotA_FCL5_I	[0.1 ; 0.5]	[0.1 ; 0.5]	[0.1 ; 0.5]	[0.1 ; 0.5]	[0.1 ; 0.5]
WALC1584	WM603565	AccHotA_FCL5_V	[26.3 ; 28.8]	[26.3 ; 28.8]	[26.3 ; 28.8]	[26.3 ; 28.8]	[26.3 ; 28.8]
WALC1584	WM502565	AccHotB_FCL6_I	[0.1 ; 0.5]	[0.1 ; 0.5]	[0.1 ; 0.5]	[0.1 ; 0.5]	[0.1 ; 0.5]
WALC1584	WM503565	AccHotB_FCL6_V	[26.3 ; 28.8]	[26.3 ; 28.8]	[26.3 ; 28.8]	[26.3 ; 28.8]	[26.3 ; 28.8]
WALC1584	WMA02565	EmrHtrIR_FCL7_I	[0 ; 0.1]	[0 ; 0.1]	[0 ; 0.1]	[0 ; 0.1]	[0 ; 0.1]
WALC1584	WMA03565	EmrHtrIR_FCL7_V	[26.3 ; 28.8]	[26.3 ; 28.8]	[26.3 ; 28.8]	[26.3 ; 28.8]	[26.3 ; 28.8]
WALC1584	WM102565	EmrHtrIN_FCL8_I	[0 ; 0.1]	[0 ; 0.1]	[0 ; 0.1]	[0 ; 0.1]	[0 ; 0.1]
WALC1584	WM103565	EmrHtrIN_FCL8_V	[26.3 ; 28.8]	[26.3 ; 28.8]	[26.3 ; 28.8]	[26.3 ; 28.8]	[26.3 ; 28.8]
WALC1584	WM32C565	SpirHsdN_L11_1S	OFF	OFF	ON	ON	OFF
WALC1584	WM32J565	SpirHsdN_L11_2S	OFF	OFF	ON	ON	OFF
WALC1584	WM308565	SpireHsN_L11_I	[0 ; 0.1]	[0 ; 0.1]	[0.2;0.6]	[0.2;0.6]	[0 ; 0.1]
WALC1584	WM82C565	SpirHsdR_L12_1S	OFF	OFF	OFF	OFF	OFF
WALC1584	WM82J565	SpirHsdR_L12_2S	OFF	OFF	OFF	OFF	OFF
WALC1584	WM608565	SpireHsdR_L12_I	[0 ; 0.1]	[0 ; 0.1]	[0 ; 0.1]	[0 ; 0.1]	[0 ; 0.1]
WALC1584	WM92A565	Gyro_A_L13_S	ON	ON	ON	ON	ON
WALC1584	WM906565	Gyro_A_L13_I	[0.8 ; 1.5]	[0.8 ; 1.5]	[0 ; 0.1]	[0 ; 0.1]	[0.8 ; 1.5]
WALC1584	WM22A565	Gyro_B_L14_S	ON	ON	ON	ON	ON
WALC1584	WM206565	Gyro_B_L14_I	[0 ; 0.1]	[0 ; 0.1]	[0.8 ; 1.5]	[0.8 ; 1.5]	[0 ; 0.1]
WALC1584	WM22C565	CRS1_L15_S	ON	ON	ON	ON	ON
WALC1584	WM208565	CRS1_L15_I	[0.24;0.35]	[0.24;0.35]	[0.24;0.35]	[0.24;0.35]	[0.24;0.35]
WALC1584	WM92C565	Xpnd2Tx_L16_S	ON	ON	ON	ON	ON
WALC1584	WM908565	Xpnd2Tx_L16_I	[0.3;0.4]	[0.3;0.4]	[0.3;0.4]	[0.3;0.4]	[0.3;0.5]
WALC1584	WMA2H565	CBH_N_L17_S	ON (j)	ON	ON	ON	ON
WALC1584	WMA13565	CBH_N_L17_I	[0.8 . 1]	[0.8 . 1]	[0.8 . 1]	[0.8 . 1]	[0.8 . 1]
WALC1584	WM12H565	CBH_R_L18_S	OFF	OFF	OFF	OFF	OFF
WALC1584	WM113565	CBH_R_L18_I	[0 ; 0.1]	[0 ; 0.1]	[0 ; 0.1]	[0 ; 0.1]	[0 ; 0.1]
WALC1584	WM32B565	SREM_L19_S	OFF	OFF/ON (*)	ON	ON	OFF
WALC1584	WM307565	Srem_L19_I	[0 ; 0.1]	[0.05;0.12]	[0.05;0.12]	[0.05;0.12]	[0 ; 0.1]
WALC1584	WM82B565	VMC_L20_S	OFF	ON/OFF (**)	OFF	OFF	OFF
WALC1584	WM807565	VMC_L20_I	[0 ; 0.1]	0/0.12	[0 ; 0.1]	[0 ; 0.1]	[0 ; 0.1]
WALC1584	WMA2C565	STR_1_L21_S	OFF	ON	ON	ON	ON
WALC1584	WMA08565	STR_1_L21_I	[0 ; 0.1]	[0.34;0.41]	[0.34;0.41]	[0.34;0.41]	[0 ; 0.1]
WALC1584	WM12C565	STR_2_L22_S	OFF	ON	ON	ON	ON
WALC1584	WM108565	STR_2_L22_I	[0 ; 0.1]	[0 ; 0.1]	[0 ; 0.1]	[0 ; 0.1]	[0 ; 0.1]
WALC1584	WM12D565	Xpnd1Tx_L23_S	ON	ON	ON	ON	ON
WALC1584	WM109565	Xpnd1Tx_L23_I	[0.3;0.5]	[0.3;0.5]	[0.3;0.5]	[0.3;0.5]	[0.3;0.4]
WALC1584	WMA2D565	CRS2_L24_S	ON	ON	ON	ON	ON
WALC1584	WMA09565	CRS2_L24_I	[0.24;0.35]	[0.24;0.35]	[0.24;0.35]	[0.24;0.35]	[0.24;0.35]
WALC1584	WM12B565	SpireLL_N_L25_S	ON	ON / OFF (***)	OFF	OFF	OFF (***)
WALC1584	WMA2B565	SpireLL_R_L26_S	ON	ON / OFF (***)	OFF	OFF	OFF (***)
WALC1584	WM82D565	PacsB_N_L27_1S	OFF	OFF	ON	ON	OFF
WALC1584	WM82K565	PacsB_N_L27_2S	OFF	OFF	ON	ON	OFF
WALC1584	WM809565	PacsB_N_L27_I	[0 ; 0.1]	[0 ; 0.1]	[0.15;1.6]	[0.15;1.6]	[0 ; 0.1]
WALC1584	WM32D565	PacsB_R_L28_1S	OFF	OFF	OFF	OFF	OFF
WALC1584	WM32K565	PacsB_R_L28_2S	OFF	OFF	OFF	OFF	OFF
WALC1584	WM309565	PacsB_R_L28_I	[0 ; 0.1]	[0 ; 0.1]	[0 ; 0.1]	[0 ; 0.1]	[0 ; 0.1]



PCS Subsystem Checkout  
 File: H\_FCP\_EPS\_CHECK.xls  
 Author: E. Picallo

DPC_NUMBE	DPC_NAME		LM	SAM	NM	SAM OW	EAM	SM
WALC2584	WM32E565	Unused_L29_1S	OFF	OFF	OFF	OFF	OFF	OFF
WALC2584	WM32L565	Unused_L29_2S	OFF	OFF	OFF	OFF	OFF	OFF
WALC2584	WM82E565	Unused_L30_1S	OFF	OFF	OFF	OFF	OFF	OFF
WALC2584	WM82L565	Unused_L30_2S	OFF	OFF	OFF	OFF	OFF	OFF
WALC2584	WM207565	CdmuColdA_L31_I	ON	ON	ON	ON	ON	ON
WALC2584	WM92B565	CdmuColdA_L31_I	[0,3;0,8]	[0,3;0,8]	[0,3;0,8]	[0,3;0,8]	[0,3;0,8]	[0;0,1]
WALC2584	WM92B565	CdmuColdB_L32_S	ON	ON	ON	ON	ON	ON
WALC2584	WM907565	CdmuColdB_L32_I	[0;0,1]	[0;0,1]	[0;0,1]	[0;0,1]	[0;0,1]	[0,3;0,8]
WALC2584	WM62B565	AccColdA_L33_S	ON	ON	ON	ON	ON	ON
WALC2584	WM607565	AccColdA_L33_I	[0,5;0,8]	[0,5;0,8]	[0,5;0,8]	[0,5;0,8]	[0,5;0,8]	[0,5;0,8]
WALC2584	WM52B565	AccColdB_L34_S	ON	ON	ON	ON	ON	ON
WALC2584	WM507565	AccColdB_L34_I	[0;0,1]	[0;0,1]	[0;0,1]	[0;0,1]	[0;0,1]	[0;0,1]
WALC2584	WM52A565	PacsS_N_L35_S	OFF	OFF	ON	ON	ON	OFF
WALC2584	WM506565	PacsS_N_L35_I	0	[0;0,1]	[0,4;0,9]	[0,4;0,9]	[0,4;0,9]	[0;0,1]
WALC2584	WM62A565	PacsS_R_L36_S	OFF	OFF	OFF	OFF	OFF	OFF
WALC2584	WM606565	PacsS_R_L36_I	[0;0,1]	[0;0,1]	[0;0,1]	[0;0,1]	[0;0,1]	[0;0,1]
WALC2584	WM12A565	Ccu_A_L37_S	ON	ON	ON	ON	ON	ON
WALC2584	WM106565	Ccu_A_L37_I	[0,1;0,28]	[0,1;0,28]	[0,1;0,28]	[0,1;0,28]	[0,1;0,28]	[0,1;0,28]
WALC2584	WMA2A565	Ccu_B_L38_S	ON	ON	ON	ON	ON	ON
WALC2584	WMA06565	Ccu_B_L38_I	[0,1;0,28]	[0,1;0,28]	[0,1;0,28]	[0,1;0,28]	[0,1;0,28]	[0,1;0,28]
WALC2584	WM42A565	Unused_L39_S	OFF	OFF	OFF	OFF	OFF	OFF
WALC2584	WM72A565	Unused_L40_S	OFF	OFF	OFF	OFF	OFF	OFF
WALC2584	WM72B565	PacsD_N_L41_S	OFF	OFF	ON	ON	ON	OFF
WALC2584	WM707565	PacsD_N_L41_I	[0;0,1]	[0;0,1]	[0,34;0,6]	[0,34;0,6]	[0,34;0,6]	[0;0,1]
WALC2584	WM42B565	PacsD_R_L42_S	OFF	OFF	OFF	OFF	OFF	OFF
WALC2584	WM407565	PacsD_R_L42_I	[0;0,1]	[0;0,1]	[0;0,1]	[0;0,1]	[0;0,1]	[0;0,1]
WALC2584	WM82A565	HiFiWEV_L43_S	OFF	OFF	ON	ON	ON	OFF
WALC2584	WM806565	HiFiWEH_L43_I	[0;0,1]	[0;0,1]	[0,8;0,96]	[0,8;0,96]	[0,8;0,96]	[0;0,1]
WALC2584	WM32A565	HiFiWEV_L44_S	OFF	OFF	ON	ON	ON	OFF
WALC2584	WM306565	HiFiWEV_L44_I	[0;0,1]	[0;0,1]	[0,8;0,96]	[0,8;0,96]	[0,8;0,96]	[0;0,1]
WALC2584	WM22D565	RcsThrsA_L45_1S	OFF	ON (*)	ON	ON	ON	ON
WALC2584	WM22J565	RcsThrsA_L45_2S	OFF	ON (*)	ON	ON	ON	ON
WALC2584	WM209565	RcsThrsA_L45_I	[0;0,1]	[0;3,08]	[0;3,08]	[0;3,08]	[0;3,08]	[0;0,1]
WALC2584	WM92D565	RcsThrsB_L46_1S	OFF	ON (*)	ON	ON	ON	ON
WALC2584	WM92J565	RcsThrsB_L46_2S	OFF	ON (*)	ON	ON	ON	ON
WALC2584	WM909565	RcsThrsB_L46_I	[0;0,1]	[0;0,1]	[0;0,1]	[0;0,1]	[0;0,1]	[0;3,08]
WALC2584	WM12E565	RcsLvA_L47_1S	ON	ON	ON	ON	ON	ON
WALC2584	WM12J565	AccLvA_L47_2S	ON	ON	ON	ON	ON	ON
WALC2584	WM110565	AccLvA_L47_I	[0;0,1]	[0;0,1]	[0;0,1]	[0;0,1]	[0;0,1]	[0;0,1]
WALC2584	WMA2E565	AccLvB_L48_1S	ON	ON	ON	ON	ON	ON
WALC2584	WMA2J565	AccLvB_L48_2S	ON	ON	ON	ON	ON	ON
WALC2584	WMA10565	AccLvB_L48_I	[0;0,1]	[0;0,1]	[0;0,1]	[0;0,1]	[0;0,1]	[0;0,1]
WALC2584	WM22E565	Twta_1_L49_1S	ON	ON	ON	ON	ON	OFF
WALC2584	WM22K565	Twta_1_L49_2S	ON	ON	ON	ON	ON	OFF
WALC2584	WM210565	Twta_1_L49_I	[0;0,1]	[1,1;2,6]	[1,1;2,6]	[1,1;2,6]	[1,1;2,6]	[0;0,1]
WALC2584	WM92E565	Twta_2_L50_1S	OFF	OFF	OFF	OFF	OFF	ON
WALC2584	WM92K565	Twta_2_L50_2S	OFF	OFF	OFF	OFF	OFF	ON
WALC2584	WM910565	Twta_2_L50_I	[0;0,1]	[0;0,1]	[0;0,1]	[0;0,1]	[0;0,1]	[1,1;2,6]
WALC2584	WM42C565	SpirHstN_L51_1S	OFF	OFF	ON	ON	ON	OFF
WALC2584	WM42J565	SpirHstN_L51_2S	OFF	OFF	ON	ON	ON	OFF
WALC2584	WM408565	SpirHstN_L51_I	[0;0,1]	[0;0,1]	[0,78;2,39]	[0,78;2,39]	[0,78;2,39]	[0;0,1]
WALC2584	WM72C565	SpirHstR_L52_1S	OFF	OFF	OFF	OFF	OFF	OFF
WALC2584	WM72J565	SpirHstR_L52_2S	OFF	OFF	OFF	OFF	OFF	OFF
WALC2584	WM708565	SpirHstR_L52_I	[0;0,1]	[0;0,1]	[0;0,1]	[0;0,1]	[0;0,1]	[0;0,1]
WALC2584	WM72D565	HiFiLCuN_L53_1S	OFF	OFF	OFF	OFF	OFF	OFF
WALC2584	WM72K565	HiFiLCuN_L53_2S	OFF	OFF	OFF	OFF	OFF	OFF
WALC2584	WM709565	HiFiLCuN_L53_I	[0;0,1]	[0;0,1]	[0;0,1]	[0;0,1]	[0;0,1]	[0;0,1]

PCS Subsystem Checkout  
 File: H\_FCP\_EPS\_CHECK.xls  
 Author: E. Picallo

DPC NUMBE	DPC NAME	LM	SAM	NM	SAM OW	EAM	SM
WALC3584	WM42D565	HiFilcuR_L54_1S	OFF	OFF	ON	ON	OFF
WALC3584	WM42K565	HiFilcuR_L54_2S	OFF	OFF	ON	ON	OFF
WALC3584	WM409565	HiFiLCU_R_L54_I	[0 ; 0.1]	[0 ; 0.1]	[1.2;2.48]	[1.2;2.48]	0
WALC3584	WM22F565	Rwl_1_L55_1S	OFF	OFF/ON (i)	ON	ON	ON
WALC3584	WM22L565	Rwl_1_L55_2S	OFF	OFF/ON (i)	ON	ON	ON
WALC3584	WM211565	Rwl_1_L55_I	[0 ; 0.1]	[0,07; 1.92]	[0,07; 1.92]	[0,07; 1.92]	[0,07; 1.92]
WALC3584	WM92F565	Rwl_2_L56_1S	OFF	OFF/ON (i)	ON	ON	ON
WALC3584	WM92L565	Rwl_2_L56_2S	OFF	OFF/ON (i)	ON	ON	ON
WALC3584	WM911565	Rwl_2_L56_I	[0 ; 0.1]	[0,07; 1.92]	[0,07; 1.92]	[0,07; 1.92]	[0,07; 1.92]
WALC3584	WM12F565	Rwl_3_L57_1S	OFF	OFF/ON (i)	ON	ON	ON
WALC3584	WM12K565	Rwl_3_L57_2S	OFF	OFF/ON (i)	ON	ON	ON
WALC3584	WM111565	Rwl_3_L57_I	[0 ; 0.1]	[0,07; 1.92]	[0,07; 1.92]	[0,07; 1.92]	[0,07; 1.92]
WALC3584	WM42F565	Rwl_4_L58_1S	OFF	OFF/ON (i)	ON	ON	ON
WALC3584	WM42K565	Rwl_4_L58_2S	OFF	OFF/ON (i)	ON	ON	ON
WALC3584	WMA11565	Rwl_4_L58_I	[0 ; 0.1]	[0,07; 1.92]	[0,07; 1.92]	[0,07; 1.92]	[0,07; 1.92]
WALC3584	WM42F565	LouDecH1_L59_1S	OFF	OFF*	OFF*	OFF*	OFF (**)
WALC3584	WM42M565	LouDecH1_L59_2S	OFF	OFF*	OFF*	OFF*	OFF (**)
WALC3584	WM42E565	Unused_L60_1S	OFF	OFF	OFF	OFF	OFF
WALC3584	WM42L565	Unused_L60_2S	OFF	OFF	OFF	OFF	OFF
WALC3584	WM72F565	LouDecH2_L61_1S	OFF	OFF*	OFF*	OFF*	OFF (**)
WALC3584	WM72M565	LouDecH2_L61_2S	OFF	OFF*	OFF*	OFF*	OFF (**)
WALC3584	WM72E565	Unused_L62_1S	OFF	OFF	OFF	OFF	OFF
WALC3584	WM72L565	Unused_L62_2S	OFF	OFF	OFF	OFF	OFF
WALC3584	WM52C565	HiFiHRH_L63_1S	OFF	OFF	ON	ON	OFF
WALC3584	WM52L565	HiFiHRH_L63_2S	OFF	OFF	ON	ON	OFF
WALC3584	WM508565	HiFiHRH_L63_I	[0 ; 0.1]	[0 ; 0.1]	[1.78;2.49]	[1.78;2.49]	0
WALC3584	WM52D565	HiFilcuN_L64_1S	OFF	OFF	OFF	OFF	OFF
WALC3584	WM52K565	HiFilcuN_L64_2S	OFF	OFF	OFF	OFF	OFF
WALC3584	WM509565	HiFiCU_N_L64_I	[0 ; 0.1]	[0 ; 0.1]	[0 ; 0.1]	[0 ; 0.1]	0
WALC3584	WM52E565	PacsMec1_L65_1S	OFF	OFF	ON	ON	OFF
WALC3584	WM52L565	PacsMec1_L65_2S	OFF	OFF	ON	ON	OFF
WALC3584	WM510565	PacsMec1_L65_I	[0 ; 0.1]	[0 ; 0.1]	[0.6;2.3]	[0.6;2.3]	[0 ; 0.1]
WALC3584	WM52F565	LouDecH3_L66_1S	OFF	OFF*	OFF*	OFF*	OFF (**)
WALC3584	WM52M565	LouDecH3_L66_2S	OFF	OFF*	OFF*	OFF*	OFF (**)
WALC3584	WM62C565	HiFiHRV_L67_1S	OFF	OFF	ON	ON	OFF
WALC3584	WM62L565	HiFiHRV_L67_2S	OFF	OFF	ON	ON	OFF
WALC3584	WM608565	HiFiHRV_L67_I	[0 ; 0.1]	[0 ; 0.1]	[1.75;2.70]	[1.75;2.70]	0
WALC3584	WM62D565	HiFilcuR_L68_1S	OFF	OFF	ON	ON	OFF
WALC3584	WM62K565	HiFilcuR_L68_2S	OFF	OFF	ON	ON	OFF
WALC3584	WM609565	HiFiCU_R_L68_I	[0 ; 0.1]	[0 ; 0.1]	[0.9;1.3]	[0.9;1.3]	0
WALC3584	WM62E565	PacsMec2_L69_1S	OFF	OFF	OFF	OFF	OFF
WALC3584	WM62L565	PacsMec2_L69_2S	OFF	OFF	OFF	OFF	OFF
WALC3584	WM610565	PacsMec2_L69_I	[0 ; 0.1]	[0 ; 0.1]	[0 ; 0.1]	[0 ; 0.1]	[0 ; 0.1]
WALC3584	WM62F565	Unused_L70_1S	OFF	OFF	OFF	OFF	OFF
WALC3584	WM62M565	Unused_L70_2S	OFF	OFF	OFF	OFF	OFF
WALC3584	WM32F565	NCA_N_L71_1_S	OFF	OFF	OFF ***	OFF	OFF
WALC3584	WM32M565	NCA_N_L71_2_S	OFF	OFF	OFF ***	OFF	OFF
WALC3584	WM311565	NCA_N_L71_I	[0 ; 0.1]	[0 ; 0.1]	[0 ; 0.1]	[0 ; 0.1]	[0 ; 0.1]
WALC3584	WM82F565	NCA_R_L72_1_S	OFF	OFF	OFF ***	OFF	OFF
WALC3584	WM82M565	NCA_R_L72_2_S	OFF	OFF	OFF ***	OFF	OFF
WALC3584	WM811565	NCA_R_L72_I	[0 ; 0.1]	[0 ; 0.1]	[0 ; 0.1]	[0 ; 0.1]	[0 ; 0.1]

PCS Subsystem Checkout  
 File: H\_FCP\_EPS\_CHECK.xls  
 Author: E. Picallo

DPC_NAME		LM	SAM	NM	SAM OW	EAM
WMM12G565	GRP1_HPS_STS	ON	ON	ON	ON	ON
WMM112565	GRP1_HPS_ITLM	< 2.5 (**)				
WMM104565	GRP1_Therm_TLM	[-15°;70°]	[-15°;70°]	[-15°;70°]	[-15°;70°]	[-15°;70°]
WMM11A565	Decon1_G1H1_S	OFF	TBD (*)	TBD (*)	TBD (*)	TBD (*)
WMM11B565	Xpnd2_G1H2_S	Cycling ON/OFF (**)				
WMM11C565	FcvA1B_G1H3_S					
WMM11D565	FcvC2B_G1H4_S					
WMM11E565	RCSpipG1H5_S					
WMM11F565	Xpnd1_G1H6_S					
WMM22G565	GRP2_HPS_STS	ON	ON	ON	ON	ON
WMM212565	GRP2_HPS_ITLM	< 5.3 (**)				
WMM204565	GRP2_Therm_TLM	[-15°;70°]	[-15°;70°]	[-15°;70°]	[-15°;70°]	[-15°;70°]
WMM21A565	Decon3_G2H1_S	OFF	TBD (*)	TBD (*)	TBD (*)	TBD (*)
WMM21B565	FcvC1B_G2H2_S	Cycling ON/OFF (**)				
WMM21C565	FcvA2B_G2H3_S					
WMM21D565	FcvC4B_G2H4_S					
WMM21E565	FpdFps_G2H5_S					
WMM21F565	tanks_G2H6_S					
WMM22H565	GRP3_HPS_STS	ON	ON	ON	ON	ON
WMM213565	GRP3_HPS_ITLM	< 6.1 (**)				
WMM205565	GRP3_Therm_TLM	[-15°;70°]	[-15°;70°]	[-15°;70°]	[-15°;70°]	[-15°;70°]
WMM21G565	FPBOLC_G3H1_S	Cycling ON/OFF (**)				
WMM21H565	CRS1_G3H2_S					
WMM21J565	FPMECDEC_G3H3_S					
WMM21K565	RCSpipG3H4_S					
WMM21L565	CcuHsdHsfG3H5_S					
WMM21M565	GYRO_G3H6_S	ON	ON	ON	ON	ON
WMM32G565	GRP4_HPS_STS	ON	ON	ON	ON	ON
WMM312565	GRP4_HPS_ITLM	< 5.4 (**)				
WMM304565	GRP4_Therm_TLM	[-15°;70°]	[-15°;70°]	[-15°;70°]	[-15°;70°]	[-15°;70°]
WMM31A565	Decon5_G4H1_S	OFF	TBD (*)	TBD (*)	TBD (*)	TBD (*)
WMM31B565	FHWOV_G4H2_S	Cycling ON/OFF (**)				
WMM31C565	RCSpip_G4H3_S					
WMM31D565	FcvA1A_G4H4_S					
WMM31E565	FcvC2A_G4H5_S					
WMM31F565	RCSpipG4H6_S					
WMM32H565	GRP5_HPS_STS	ON	ON	ON	ON	ON
WMM313565	GRP5_HPS_ITLM	< 4.4 (**)				
WMM305565	GRP5_Therm_TLM	[-15°;70°]	[-15°;70°]	[-15°;70°]	[-15°;70°]	[-15°;70°]
WMM31G565	CRS2_G5H1_S	Cycling ON/OFF (**)				
WMM31H565	FHHRH_G5H2_S					
WMM31J565	FhWwlcuG5H3_S					
WMM31K565	FcvC3B_G5H4_S					
WMM31L565	RCSpipG5H5_S					
WMM31M565	PtLlLv12_G5H6_S	ON	ON	ON	ON	ON
WMM42G565	GRP6_HPS_STS	ON	ON	ON	ON	ON
WMM412565	GRP6_HPS_ITLM	< 6.1 (**)				
WMM404565	GRP6_Therm_TLM	[-15°;70°]	[-15°;70°]	[-15°;70°]	[-15°;70°]	[-15°;70°]
WMM41A565	Decon7_G6H1_S	OFF	TBD (*)	TBD (*)	TBD (*)	TBD (*)
WMM41B565	RWA4_G6H2_S	Cycling ON/OFF (**)				
WMM41C565	RWA1_G6H3_S					
WMM41D565	RWA3_G6H4_S					
WMM41E565	FHWEV_G6H5_S					
WMM41F565	RWA2_G6H6_S					

PCS Subsystem Checkout  
 File: H\_FCP\_EPS\_CHECK.xls  
 Author: E. Picallo

DPC_NAME	LM	SAM	NM	SAM OW	EAM	SM																										
WM42H566	GRP7_HPS_STS	ON	ON	ON	ON	OFF																										
WM413566	GRP7_HPS_ITLM	< 4.25 (**)					[0 ; 0.158]																									
WM405566	GRP7_Therm_TLM	[-15°;70°]	[-15°;70°]	[-15°;70°]	[-15°;70°]	[-15°;70°]																										
WM41G566	STR_G7H1_S	Cycling ON/OFF (**)					OFF																									
WM41H566	BATTconG7H2_S						Cycling ON/OFF (**)					OFF																				
WM41J566	FHWOH_G7H3_S											Cycling ON/OFF (**)					OFF															
WM41K566	FHWEH_G7H4_S																Cycling ON/OFF (**)					OFF										
WM41L566	FcvC1A_G7H5_S																					Cycling ON/OFF (**)					OFF					
WM41M566	FcvA2A_G7H6_S																										Cycling ON/OFF (**)					OFF
WM52G566	GRP8_HPS_STS																															ON
WM512566	GRP8_HPS_ITLM	< 3.5 (**)																														[0 ; 0.158]
WM504566	GRP8_Therm_TLM	[-15°;70°]	[-15°;70°]	[-15°;70°]	[-15°;70°]	[-15°;70°]																										
WM51A566	FHHRV_G8H1_S	Cycling ON/OFF (**)					OFF																									
WM51B566	FcvC3A_G8H2_S						Cycling ON/OFF (**)					OFF																				
WM51C566	RCSpipG8H3_S											Cycling ON/OFF (**)					OFF															
WM51D566	STR2baaffG8H4_S																Cycling ON/OFF (**)					OFF										
WM51E566	RCSpipG8H5_S																					Cycling ON/OFF (**)					OFF					
WM51F566	FHLCU_G8H6_S																										Cycling ON/OFF (**)					OFF
WM52H566	GRP9_HPS_STS																															ON
WM513566	GRP9_HPS_ITLM	< 5.8 (**)																														[0 ; 0.1]
WM505566	GRP9_Therm_TLM	[-15°;70°]	[-15°;70°]	[-15°;70°]	[-15°;70°]	[-15°;70°]																										
WM51G566	Decon8_G9H1_S	OFF	TBD (*)	TBD (*)	TBD (*)	TBD (*)																										
WM51H566	tank-Y_G9H2_S	Cycling ON/OFF (**)					OFF																									
WM51J566	FcvC4A_G9H3_S						Cycling ON/OFF (**)					OFF																				
WM51K566	FHLSU_G9H4_S											Cycling ON/OFF (**)					OFF															
WM51L566	STR1baaffG9H5_S																Cycling ON/OFF (**)					OFF										
WM51M566	tank+Y_G9H6_S																					Cycling ON/OFF (**)					OFF					
WM62G566	GRP10_HPS_STS																										OFF	TBD (*)	TBD (*)	TBD (*)	TBD (*)	
WM612566	GRP10_HPS_ITLM																										[0 ; 0.158]	[0 ; 0.158]	[0 ; 0.158]	[0 ; 0.158]	[0 ; 0.158]	
WM604566	GRP10_Therm_TLM	[-15°;70°]	[-15°;70°]	[-15°;70°]	[-15°;70°]	[-15°;70°]																										
WM61A566	Decon2_G10H1_S	OFF	TBD (*)	TBD (*)	TBD (*)	TBD (*)																										
WM61B566	tank-Y_G10H2_S	OFF	OFF	OFF	OFF	OFF																										
WM61C566	FcvC4A_G10H3_S	OFF	OFF	OFF	OFF	OFF																										
WM61D566	FHLSU_G10H4_S	OFF	OFF	OFF	OFF	OFF																										
WM61E566	STR1baaffG10H5_S	OFF	OFF	OFF	OFF	OFF																										
WM61F566	tank+Y_G10H6_S	OFF	OFF	OFF	OFF	OFF																										
WM62H566	GRP11_HPS_STS	OFF	OFF	OFF	OFF	OFF																										
WM613566	GRP11_HPS_ITLM	[0 ; 0.158]	[0 ; 0.158]	[0 ; 0.158]	[0 ; 0.158]	[0 ; 0.158]																										
WM605566	GRP11_Therm_TLM	[-15°;70°]	[-15°;70°]	[-15°;70°]	[-15°;70°]	[-15°;70°]																										
WM61G566	FHHRV_G11H1_S	OFF	OFF	OFF	OFF	OFF																										
WM61H566	FcvC3A_G11H2_S	OFF	OFF	OFF	OFF	OFF																										
WM61J566	RCSpipG11H3_S	OFF	OFF	OFF	OFF	OFF																										
WM61K566	STR2baaffG11H4_S	OFF	OFF	OFF	OFF	OFF																										
WM61L566	RCSpipG11H5_S	OFF	OFF	OFF	OFF	OFF																										
WM61M566	FHLCU_G11H6_S	OFF	OFF	OFF	OFF	OFF																										
WM72G566	GRP12_HPS_STS	OFF	OFF	OFF	OFF	OFF																										
WM712566	GRP12_HPS_ITLM	[0 ; 0.158]	[0 ; 0.158]	[0 ; 0.158]	[0 ; 0.158]	[0 ; 0.158]																										
WM704566	GRP12_Therm_TLM	[-15°;70°]	[-15°;70°]	[-15°;70°]	[-15°;70°]	[-15°;70°]																										
WM71A566	STR_G12H1_S	OFF	OFF	OFF	OFF	OFF																										
WM71B566	BATTconG12H2_S	OFF	OFF	OFF	OFF	OFF																										
WM71C566	FHWOH_G12H3_S	OFF	OFF	OFF	OFF	OFF																										
WM71D566	FHWEH_G12H4_S	OFF	OFF	OFF	OFF	OFF																										
WM71E566	FcvC1A_G12H5_S	OFF	OFF	OFF	OFF	OFF																										
WM71F566	FcvA2A_G12H6_S	OFF	OFF	OFF	OFF	OFF																										

PCS Subsystem Checkout  
 File: H\_FCP\_EPS\_CHECK.xls  
 Author: E. Picallo

DPC_NAME	LM	SAM	NM	SAM OW	EAM	SM
WM72H565	GRP13_HPS_STS	OFF	OFF	OFF	OFF	ON
WM713565	GRP13_HPS_ITLM	[0 , 0.158]	[0 , 0.158]	[0 , 0.158]	[0 , 0.158]	< 2.5 (**)
WM705565	GRP13_Therm_ITLM	[-15°;70°]	[-15°;70°]	[-15°;70°]	[-15°;70°]	[-15°;70°]
WM71G565	Gp13Heat1_S	OFF	OFF	OFF	OFF	Cycling ON/OFF
WM71H565	RWA4_G13H2_S	OFF	OFF	OFF	OFF	
WM71J565	RWA1_G13H3_S	OFF	OFF	OFF	OFF	
WM71K565	RWA3_G13H4_S	OFF	OFF	OFF	OFF	
WM71L565	FHWEV_G13H5_S	OFF	OFF	OFF	OFF	
WM71M565	RWA2_G13H6_S	OFF	OFF	OFF	OFF	
WM62G565	GRP14_HPS_STS	OFF	OFF	OFF	OFF	ON
WM612565	GRP14_HPS_ITLM	[0 , 0.158]	[0 , 0.158]	[0 , 0.158]	[0 , 0.158]	< 4.4 (**)
WM604565	GRP14_Therm_ITLM	[-15°;70°]	[-15°;70°]	[-15°;70°]	[-15°;70°]	[-15°;70°]
WM61A565	CRS2_G14H1_S	OFF	OFF	OFF	OFF	Cycling ON/OFF
WM61B565	FHHRH_G14H2_S	OFF	OFF	OFF	OFF	
WM61C565	FHWVicuG14H3_S	OFF	OFF	OFF	OFF	
WM61D565	FcvC3B_G14H4_S	OFF	OFF	OFF	OFF	
WM61E565	RCSpipG14H5_S	OFF	OFF	OFF	OFF	
WM61F565	PLALv12G14H6_S	OFF	OFF	OFF	OFF	
WM62H565	GRP15_HPS_STS	OFF	OFF	OFF	OFF	ON
WM613565	GRP15_HPS_ITLM	[0 , 0.158]	[0 , 0.158]	[0 , 0.158]	[0 , 0.158]	< 5.4 (**)
WM605565	GRP15_Therm_ITLM	[-15°;70°]	[-15°;70°]	[-15°;70°]	[-15°;70°]	[-15°;70°]
WM61G565	Decon6_G15H1_S	OFF	OFF	OFF	OFF	OFF
WM61H565	FHWOV_G15H2_S	OFF	OFF	OFF	OFF	Cycling ON/OFF
WM61J565	RCSpipG15H3_S	OFF	OFF	OFF	OFF	
WM61K565	FcvA1A_G15H4_S	OFF	OFF	OFF	OFF	
WM61L565	FcvC2A_G15H5_S	OFF	OFF	OFF	OFF	
WM61M565	RCSpipG15H6_S	OFF	OFF	OFF	OFF	
WM62G565	GRP16_HPS_STS	OFF	OFF	OFF	OFF	
WM612565	GRP16_HPS_ITLM	[0 , 0.158]	[0 , 0.158]	[0 , 0.158]	[0 , 0.158]	< 6.1 (**)
WM604565	GRP16_Therm_ITLM	[-15°;70°]	[-15°;70°]	[-15°;70°]	[-15°;70°]	[-15°;70°]
WM61A565	FPBOLC_G16H1_S	OFF	OFF	OFF	OFF	Cycling ON/OFF
WM61B565	CRS1_G16H2_S	OFF	OFF	OFF	OFF	
WM61C565	FPMECDEC_G16H3s	OFF	OFF	OFF	OFF	
WM61D565	RCSpipG16H4_S	OFF	OFF	OFF	OFF	
WM61E565	CcuHdHf_G16H5_S	OFF	OFF	OFF	OFF	
WM61F565	GYRO_G16H6_S	OFF	OFF	OFF	OFF	
WM62H565	GRP17_HPS_STS	OFF	OFF	OFF	OFF	ON
WM613565	GRP17_HPS_ITLM	[0 , 0.158]	[0 , 0.158]	[0 , 0.158]	[0 , 0.158]	< 5.3 (**)
WM605565	GRP17_Therm_ITLM	[-15°;70°]	[-15°;70°]	[-15°;70°]	[-15°;70°]	[-15°;70°]
WM61G565	Decon4_G17H1_S	OFF	OFF	OFF	OFF	OFF
WM61H565	FcvC1B_G17H2_S	OFF	OFF	OFF	OFF	Cycling ON/OFF
WM61J565	FcvA2B_G17H3_S	OFF	OFF	OFF	OFF	
WM61K565	FcvC4B_G17H4_S	OFF	OFF	OFF	OFF	
WM61L565	FpdFps_G17H5_S	OFF	OFF	OFF	OFF	
WM61M565	tanks_G17H6_S	OFF	OFF	OFF	OFF	
WMA2G565	GRP18_HPS_STS	OFF	OFF	OFF	OFF	
WMA12565	GRP18_HPS_ITLM	[0 , 0.158]	[0 , 0.158]	[0 , 0.158]	[0 , 0.158]	< 5.2 (**)
WMA04565	GRP18_Therm_ITLM	[-15°;70°]	[-15°;70°]	[-15°;70°]	[-15°;70°]	[-15°;70°]
WMA1A565	Decon9_G18H1_S	OFF	OFF	OFF	OFF	OFF
WMA1B565	XPND2_G18H2_S	OFF	OFF	OFF	OFF	Cycling ON/OFF
WMA1C565	FcvA1B_G18H3_S	OFF	OFF	OFF	OFF	
WMA1D565	FcvC2B_G18H4_S	OFF	OFF	OFF	OFF	
WMA1E565	RCSpipG18H5_S	OFF	OFF	OFF	OFF	
WMA1F565	XPND1_G18H6_S	OFF	OFF	OFF	OFF	

PCS Subsystem Checkout

File: H\_FCP\_EPS\_CHECK.xls

Author: E. Picallo

DPC NAME		LM	SAM	NM	SAM OW	EAM	SM
DEG77170	Hps1FuncSts	ON	ON	ON	ON	ON	OFF
DEG79170	Hps1Use	IN USE	IN USE	IN USE	IN USE	IN USE	NOT IN USE
DEG78170	Hps1LogSts	NOMINAL	NOMINAL	NOMINAL	NOMINAL	NOMINAL	REDUNDANT
DEG76170	Hps1FailSts	NOT FAILED	NOT FAILED	NOT FAILED	NOT FAILED	NOT FAILED	NOT FAILED
DEG81170	Hps2FuncSts	ON	ON	ON	ON	ON	OFF
DEG83170	Hps2Use	IN USE	IN USE	IN USE	IN USE	IN USE	NOT IN USE
DEG82170	Hps2LogSts	NOMINAL	NOMINAL	NOMINAL	NOMINAL	NOMINAL	REDUNDANT
DEG80170	Hps2FailSts	NOT FAILED	NOT FAILED	NOT FAILED	NOT FAILED	NOT FAILED	NOT FAILED
DEG85170	Hps3FuncSts	ON	ON	ON	ON	ON	OFF
DEG87170	Hps3Use	IN USE	IN USE	IN USE	IN USE	IN USE	NOT IN USE
DEG86170	Hps3LogSts	NOMINAL	NOMINAL	NOMINAL	NOMINAL	NOMINAL	REDUNDANT
DEG84170	Hps3FailSts	NOT FAILED	NOT FAILED	NOT FAILED	NOT FAILED	NOT FAILED	NOT FAILED
DEG89170	Hps4FuncSts	ON	ON	ON	ON	ON	OFF
DEG91170	Hps4Use	IN USE	IN USE	IN USE	IN USE	IN USE	NOT IN USE
DEG90170	Hps4LogSts	NOMINAL	NOMINAL	NOMINAL	NOMINAL	NOMINAL	REDUNDANT
DEG88170	Hps4FailSts	NOT FAILED	NOT FAILED	NOT FAILED	NOT FAILED	NOT FAILED	NOT FAILED
DEG93170	Hps5FuncSts	ON	ON	ON	ON	ON	OFF
DEG95170	Hps5Use	IN USE	IN USE	IN USE	IN USE	IN USE	NOT IN USE
DEG94170	Hps5LogSts	NOMINAL	NOMINAL	NOMINAL	NOMINAL	NOMINAL	REDUNDANT
DEG92170	Hps5FailSts	NOT FAILED	NOT FAILED	NOT FAILED	NOT FAILED	NOT FAILED	NOT FAILED
DEG97170	Hps6FuncSts	ON	ON	ON	ON	ON	OFF
DEG99170	Hps6Use	IN USE	IN USE	IN USE	IN USE	IN USE	NOT IN USE
DEG98170	Hps6LogSts	NOMINAL	NOMINAL	NOMINAL	NOMINAL	NOMINAL	REDUNDANT
DEG96170	Hps6FailSts	NOT FAILED	NOT FAILED	NOT FAILED	NOT FAILED	NOT FAILED	NOT FAILED
DEH01170	Hps7FuncSts	ON	ON	ON	ON	ON	OFF
DEH03170	Hps7Use	IN USE	IN USE	IN USE	IN USE	IN USE	NOT IN USE
DEH02170	Hps7LogSts	NOMINAL	NOMINAL	NOMINAL	NOMINAL	NOMINAL	REDUNDANT
DEH00170	Hps7FailSts	NOT FAILED	NOT FAILED	NOT FAILED	NOT FAILED	NOT FAILED	NOT FAILED
DEH05170	Hps8FuncSts	ON	ON	ON	ON	ON	OFF
DEH07170	Hps8Use	IN USE	IN USE	IN USE	IN USE	IN USE	NOT IN USE
DEH06170	Hps8LogSts	NOMINAL	NOMINAL	NOMINAL	NOMINAL	NOMINAL	REDUNDANT
DEH04170	Hps8FailSts	NOT FAILED	NOT FAILED	NOT FAILED	NOT FAILED	NOT FAILED	NOT FAILED
DEG73170	Hps18FuncSts	OFF	OFF	OFF	OFF	OFF	ON
DEG75170	Hps18Use	NOT IN USE	NOT IN USE	NOT IN USE	NOT IN USE	NOT IN USE	IN USE
DEG74170	Hps18LogSts	REDUNDANT	REDUNDANT	REDUNDANT	REDUNDANT	REDUNDANT	NOMINAL
DEG72170	Hps18FailSts	NOT FAILED	NOT FAILED	NOT FAILED	NOT FAILED	NOT FAILED	NOT FAILED
DEG69170	Hps17FuncSts	OFF	OFF	OFF	OFF	OFF	ON
DEG71170	Hps17Use	NOT IN USE	NOT IN USE	NOT IN USE	NOT IN USE	NOT IN USE	IN USE
DEG70170	Hps17LogSts	REDUNDANT	REDUNDANT	REDUNDANT	REDUNDANT	REDUNDANT	NOMINAL
DEG68170	Hps17FailSts	NOT FAILED	NOT FAILED	NOT FAILED	NOT FAILED	NOT FAILED	NOT FAILED
DEG65170	Hps16FuncSts	OFF	OFF	OFF	OFF	OFF	ON
DEG67170	Hps16Use	NOT IN USE	NOT IN USE	NOT IN USE	NOT IN USE	NOT IN USE	IN USE
DEG66170	Hps16LogSts	REDUNDANT	REDUNDANT	REDUNDANT	REDUNDANT	REDUNDANT	NOMINAL
DEG64170	Hps16FailSts	NOT FAILED	NOT FAILED	NOT FAILED	NOT FAILED	NOT FAILED	NOT FAILED
DEG61170	Hps15FuncSts	OFF	OFF	OFF	OFF	OFF	ON
DEG63170	Hps15Use	NOT IN USE	NOT IN USE	NOT IN USE	NOT IN USE	NOT IN USE	IN USE
DEG62170	Hps15LogSts	REDUNDANT	REDUNDANT	REDUNDANT	REDUNDANT	REDUNDANT	NOMINAL
DEG60170	Hps15FailSts	NOT FAILED	NOT FAILED	NOT FAILED	NOT FAILED	NOT FAILED	NOT FAILED
DEG57170	Hps14FuncSts	OFF	OFF	OFF	OFF	OFF	ON
DEG59170	Hps14Use	NOT IN USE	NOT IN USE	NOT IN USE	NOT IN USE	NOT IN USE	IN USE
DEG58170	Hps14LogSts	REDUNDANT	REDUNDANT	REDUNDANT	REDUNDANT	REDUNDANT	NOMINAL
DEG56170	Hps14FailSts	NOT FAILED	NOT FAILED	NOT FAILED	NOT FAILED	NOT FAILED	NOT FAILED
DEG53170	Hps13FuncSts	OFF	OFF	OFF	OFF	OFF	ON
DEG55170	Hps13Use	NOT IN USE	NOT IN USE	NOT IN USE	NOT IN USE	NOT IN USE	IN USE
DEG54170	Hps13LogSts	REDUNDANT	REDUNDANT	REDUNDANT	REDUNDANT	REDUNDANT	NOMINAL
DEG52170	Hps13FailSts	NOT FAILED	NOT FAILED	NOT FAILED	NOT FAILED	NOT FAILED	NOT FAILED
DEG49170	Hps12FuncSts	OFF	OFF	OFF	OFF	OFF	ON
DEG51170	Hps12Use	NOT IN USE	NOT IN USE	NOT IN USE	NOT IN USE	NOT IN USE	IN USE
DEG50170	Hps12LogSts	REDUNDANT	REDUNDANT	REDUNDANT	REDUNDANT	REDUNDANT	NOMINAL
DEG48170	Hps12FailSts	NOT FAILED	NOT FAILED	NOT FAILED	NOT FAILED	NOT FAILED	NOT FAILED
DEG45170	Hps11FuncSts	OFF	OFF	OFF	OFF	OFF	ON
DEG47170	Hps11Use	NOT IN USE	NOT IN USE	NOT IN USE	NOT IN USE	NOT IN USE	IN USE
DEG46170	Hps11LogSts	REDUNDANT	REDUNDANT	REDUNDANT	REDUNDANT	REDUNDANT	NOMINAL
DEG44170	Hps11FailSts	NOT FAILED	NOT FAILED	NOT FAILED	NOT FAILED	NOT FAILED	NOT FAILED

PCS Subsystem Checkout  
 File: H\_FCP\_EPS\_CHECK.xls  
 Author: E. Picallo

DPC NAME		LM	SAM	NM	SAM OW	EAM	SM
DEH09170	Hps9FuncSts	ON	ON	ON	ON	ON	OFF
DEH11170	Hps9Use	IN USE	IN USE	IN USE	IN USE	IN USE	NOT IN USE
DEH10170	Hps9LogSts	NOMINAL	NOMINAL	NOMINAL	NOMINAL	NOMINAL	REDUNDANT
DEH08170	Hps9FailSts	NOT FAILED	NOT FAILED	NOT FAILED	NOT FAILED	NOT FAILED	NOT FAILED
DEG41170	Hps10FuncSts	OFF	OFF	OFF	OFF	OFF	ON
DEG43170	Hps10Use	NOT IN USE	NOT IN USE	NOT IN USE	NOT IN USE	NOT IN USE	IN USE
DEG42170	Hps10LogSts	REDUNDANT	REDUNDANT	REDUNDANT	REDUNDANT	REDUNDANT	NOMINAL
DEG40170	Hps10FailSts	NOT FAILED	NOT FAILED	NOT FAILED	NOT FAILED	NOT FAILED	NOT FAILED
DEN74170	Hgps1FuncSts	OFF	OFF	OFF	OFF	OFF	OFF
DEN75170	Hgps2FuncSts	OFF	OFF	OFF	OFF	OFF	OFF
DEN76170	Hgps3FuncSts	OFF	OFF	OFF	OFF	OFF	OFF
DEN77170	Hgps4FuncSts	OFF	OFF	OFF	OFF	OFF	OFF
DEN78170	Hgps5FuncSts	OFF	OFF	OFF	OFF	OFF	OFF
DEN79170	Hgps6FuncSts	OFF	OFF	OFF	OFF	OFF	OFF
DEN80170	Hgps7FuncSts	OFF	OFF	OFF	OFF	OFF	OFF
DEN81170	Hgps8FuncSts	OFF	OFF	OFF	OFF	OFF	OFF
DEN82170	Hgps9FuncSts	OFF	OFF	OFF	OFF	OFF	OFF
DEN83170	Hgps10FuncSts	OFF	OFF	OFF	OFF	OFF	OFF
DEN84170	Hgps11FuncSts	OFF	OFF	OFF	OFF	OFF	OFF
DEN85170	Hgps12FuncSts	OFF	OFF	OFF	OFF	OFF	OFF
DEN86170	Hgps13FuncSts	OFF	OFF	OFF	OFF	OFF	OFF
DEN87170	Hgps14FuncSts	OFF	OFF	OFF	OFF	OFF	OFF
DEN88170	Hgps15FuncSts	OFF	OFF	OFF	OFF	OFF	OFF
DEN89170	Hgps16FuncSts	OFF	OFF	OFF	OFF	OFF	OFF
DEN90170	Hgps17FuncSts	OFF	OFF	OFF	OFF	OFF	OFF
DEN91170	Hgps18FuncSts	OFF	OFF	OFF	OFF	OFF	OFF