

Check Earth Acquisition mode configuration  
 File: H\_FCP\_DHS\_4004.xls  
 Author: S. Manganelli



## Procedure Summary

### Objectives

This procedure describes the steps needed to check the S/C status in Earth Acquisition mode.

### Summary of Constraints

n/a

### Spacecraft Configuration

**Start of Procedure**

n/a

**End of Procedure**

n/a

### Reference File(s)

**Input Command Sequences**

**Output Command Sequences**

HFD4004

### Referenced Displays

<b>ANDs</b>	<b>GRDs</b>	<b>SLDs</b>
ZAZAI999		(None)
ZAZAF999		
ZAZAP999		
ZAZAA999		

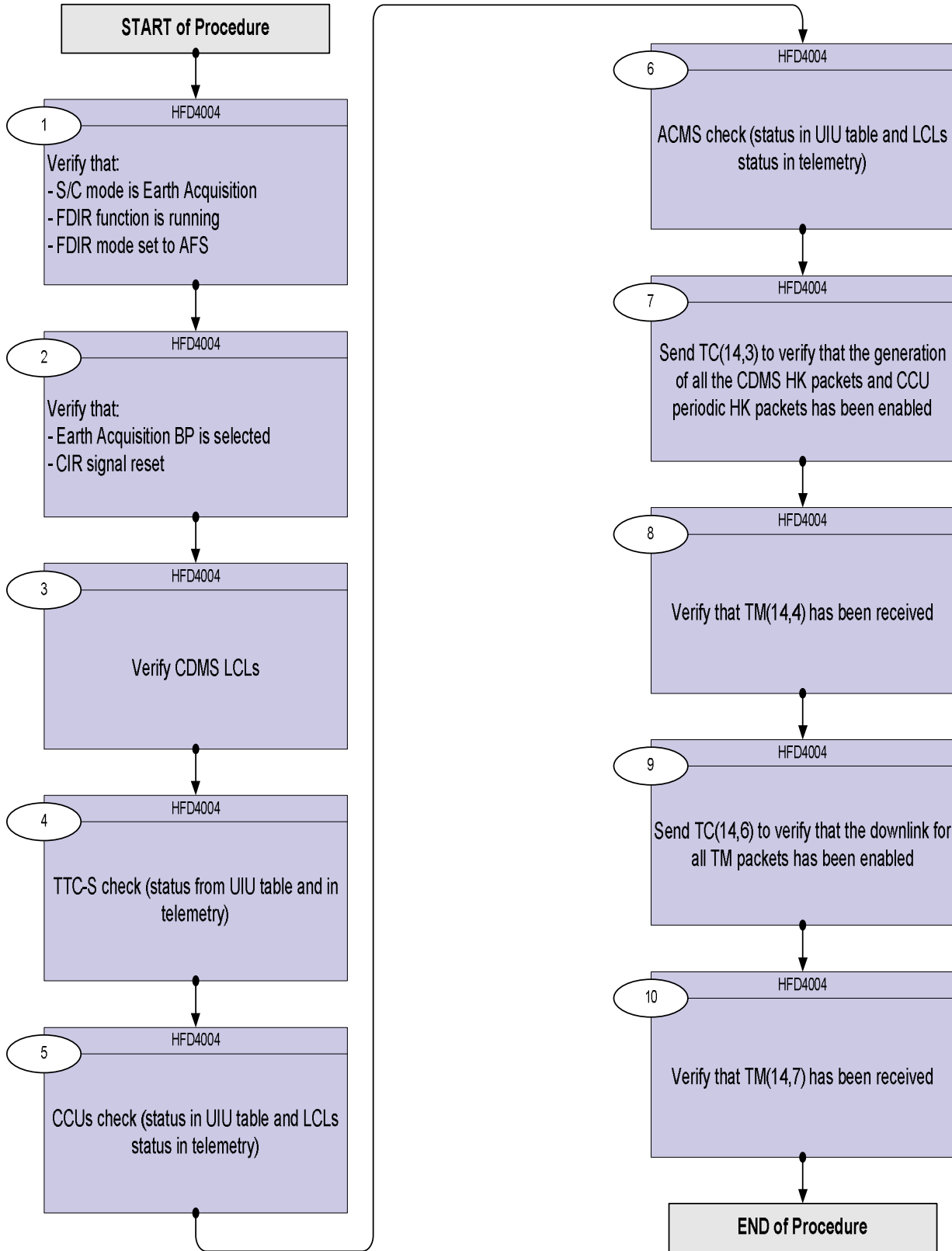
### Configuration Control Information

DATE	FOP ISSUE	VERSION	MODIFICATION DESCRIPTION	AUTHOR	SPR REF
17/03/08		1	Created	cmevi-hp	
10/06/08	1	2	TC Flag and Seq Properly changed	S. Manganelli	
11/12/08	2	3	Checked against OBSW 3_6_2	S. Manganelli	
03/07/09	2.5	4	Following TAS inputs due to ASW update (XPONDER LCL always ON)	S. Manganelli	

Check Earth Acquisition mode configuration  
 File: H\_FCP\_DHS\_4004.xls  
 Author: S. Manganelli



**Procedure Flowchart Overview**



Check Earth Acquisition mode configuration  
 File: H\_FCP\_DHS\_4004.xls  
 Author: S. Manganelli



Step No.	Time	Activity/Remarks	TC/TLM	Display/ Branch
<b>Beginning of Procedure</b>				
TC Seq. Name :HFD4004 (Check EAM)				
TimeTag Type: Sub Schedule ID:  □				
1		Verify that: - S/C mode is Earth Acquisition - FDIR function is running - FDIR mode set to AFS		Next Step: 2
		Verify Telemetry <b>CurrentMode</b> <b>DEL34170</b>	<b>= EarthAcquistn</b>	AND=ZAZAI999
		Verify Telemetry <b>FdirSts</b> <b>DEG23170</b>	<b>= Running</b>	AND=ZAZAI999
		Verify Telemetry <b>FdirMode</b> <b>DE81D170</b>	<b>= AFS</b>	AND=ZAZAI999
2		Verify that: - Earth Acquisition BP is selected - CIR signal reset		Next Step: 3
		Verify Telemetry <b>BSW_SDB_ActProf</b> <b>DEF5F160</b>		AND=ZAZAF999
		Verify Telemetry <b>CIR_N</b> <b>DEK18160</b>	<b>= No</b>	AND=ZAZAP999
3		Verify CDMS LCLs		Next Step: 4
		Verify Telemetry <b>CdmuColdA_L31_S</b> <b>WM22B565</b>	<b>= ON</b>	AND=ZAZAA999
		Verify Telemetry <b>CdmuColdB_L32_S</b> <b>WM92B565</b>	<b>= ON</b>	AND=ZAZAA999
4		TTC-S check (status from UIU table and in telemetry)		Next Step: 5
		<b><u>RFDN switches</u></b>		

Check Earth Acquisition mode configuration  
 File: H\_FCP\_DHS\_4004.xls  
 Author: S. Manganelli



Step No.	Time	Activity/Remarks	TC/TLM	Display/ Branch
		<p><b>Expected configuration (assuming to work with TTC S/S branch 1 and that no RFDN failure occurred):</b></p> <p><b>SW 1:</b>            - Fail="Not failed"            - Functional="OFF"            - Logical="Nominal"            - Use="In use"</p> <p><b>SW 2:</b>            - Fail="Not failed"            - Functional="ON"            - Logical="Redundant"            - Use="Not in use"</p>		
		<p><b>SW 3:</b>            Fail="Not failed"            Functional="OFF"            Logical="Nominal"            Use="In use"</p> <p><b>SW 4:</b>            Fail="Not failed"            Functional="ON"            Logical="Redundant"            Use="Not in use"</p>		
		Verify Telemetry <div style="text-align: right;">Rfdn1FailSts                      DEH48170</div>		(None)
		Verify Telemetry <div style="text-align: right;">Rfdn1FuncSts                      DEH49170</div>		(None)
		Verify Telemetry <div style="text-align: right;">Rfdn1LogSts                      DEH50170</div>		(None)
		Verify Telemetry <div style="text-align: right;">Rfdn1Use                              DEH51170</div>		(None)
		Verify Telemetry <div style="text-align: right;">Rfdn2FailSts                      DEH52170</div>		(None)
		Verify Telemetry <div style="text-align: right;">Rfdn2FuncSts                      DEH53170</div>		(None)
		Verify Telemetry <div style="text-align: right;">Rfdn2LogSts                      DEH54170</div>		(None)
		Verify Telemetry <div style="text-align: right;">Rfdn2Use                              DEH55170</div>		(None)
		Verify Telemetry <div style="text-align: right;">Rfdn3FailSts                      DEH56170</div>		(None)
		Verify Telemetry <div style="text-align: right;">Rfdn3FuncSts                      DEH57170</div>		(None)
		Verify Telemetry <div style="text-align: right;">Rfdn3LogSts                      DEH58170</div>		(None)

Check Earth Acquisition mode configuration  
 File: H\_FCP\_DHS\_4004.xls  
 Author: S. Manganelli



Step No.	Time	Activity/Remarks	TC/TLM	Display/ Branch
		Verify Telemetry Rfdn3Use DEH59170		(None)
		Verify Telemetry Rfdn4FailSts DEH60170		(None)
		Verify Telemetry Rfdn4FuncSts DEH61170		(None)
		Verify Telemetry Rfdn4LogSts DEH62170		(None)
		Verify Telemetry Rfdn4Use DEH63170		(None)
		<b><u>XPND 1/2 Transmitter and TWT Assembly 1/2</u></b>		
		Expected configuration (assuming to work with TTC S/S branch 1 and that no TTC failure occurred):  <u>XPND1:</u> - Fail="Not failed" - Functional="ON" - Logical="Nominal" - Use="In use"  <u>XPND2:</u> - Fail="Not failed" - Functional="OFF" - Logical="Redundant" - Use="Not in use"		
		<u>TWTA1:</u> - Fail="Not failed" - Functional="ON" - Logical="Nominal" - Use="In use"  <u>TWTA2:</u> - Fail="Not failed" - Functional="OFF" - Logical="Redundant" - Use="Not in use"		
		Verify Telemetry XpndTx1FailSts DEL26170		(None)
		Verify Telemetry XpndTx1FuncSts DEL27170		(None)
		Verify Telemetry XpndTx1LogSts DEL28170		(None)
		Verify Telemetry XpndTx1Use DEL29170		(None)
		Verify Telemetry XpndTx2FailSts DEL30170		(None)

Check Earth Acquisition mode configuration  
 File: H\_FCP\_DHS\_4004.xls  
 Author: S. Manganelli



Step No.	Time	Activity/Remarks	TC/TLM	Display/ Branch
		Verify Telemetry XpndTx2FuncSts DEL31170		(None)
		Verify Telemetry XpndTx2LogSts DEL32170		(None)
		Verify Telemetry XpndTx2Use DEL33170		(None)
		Verify Telemetry TwtalFailSts DEL18170		(None)
		Verify Telemetry TwtalFuncSts DEL19170		(None)
		Verify Telemetry TwtalLogSts DEL20170		(None)
		Verify Telemetry TwtalUse DEL21170		(None)
		Verify Telemetry Twtal2FailSts DEL22170		(None)
		Verify Telemetry Twtal2FuncSts DEL23170		(None)
		Verify Telemetry Twtal2LogSts DEL24170		(None)
		Verify Telemetry Twtal2Use DEL25170		(None)
		<b><u>EPC 1/2 and TWT Amplifier 1/2</u></b>		
		Expected configuration (assuming to work with TTC S/S branch 1 and that no TTC failure occurred):  <b><u>EPC1:</u></b> - Fail="Not failed" - Functional="ON" - Logical="Nominal" - Use="In use"  <b><u>EPC2:</u></b> - Fail="Not failed" - Functional="OFF" - Logical="Redundant" - Use="Not in use"		

Check Earth Acquisition mode configuration  
 File: H\_FCP\_DHS\_4004.xls  
 Author: S. Manganelli



Step No.	Time	Activity/Remarks	TC/TLM	Display/ Branch
		<b>TWT1:</b> - Fail="Not failed" - Functional="ON" - Logical="Nominal" - Use="In use"  <b>TWT2:</b> - Fail="Not failed" - Functional="OFF" - Logical="Redundant" - Use="Not in use"		
		Verify Telemetry Epc1FailSts                      DEG24170		(None)
		Verify Telemetry Epc1FuncSts                      DEG25170		(None)
		Verify Telemetry Epc1LogSts                      DEG26170		(None)
		Verify Telemetry Epc1Use                      DEG27170		(None)
		Verify Telemetry Epc2FailSts                      DEG28170		(None)
		Verify Telemetry Epc2FuncSts                      DEG29170		(None)
		Verify Telemetry Epc2LogSts                      DEG30170		(None)
		Verify Telemetry Epc2Use                      DEG31170		(None)
		Verify Telemetry TwtAmp1FailSts                      DEH12170		(None)
		Verify Telemetry TwtAmp1FuncSts                      DEH13170		(None)
		Verify Telemetry TwtAmp1LogSts                      DEH14170		(None)
		Verify Telemetry TwtAmp1Use                      DEH15170		(None)
		Verify Telemetry TwtAmp2FailSts                      DEH16170		(None)
		Verify Telemetry TwtAmp2FuncSts                      DEH17170		(None)
		Verify Telemetry TwtAmp2LogSts                      DEH18170		(None)
		Verify Telemetry TwtAmp2Use                      DEH19170		(None)

Check Earth Acquisition mode configuration  
 File: H\_FCP\_DHS\_4004.xls  
 Author: S. Manganelli



Step No.	Time	Activity/Remarks	TC/TLM	Display/ Branch
		<b><u>XPND 1/2 RX</u></b>		
		Expected configuration (assuming to work with TTC S/S branch 1 and that no TTC failure occurred):  <u>RX1:</u> - Fail="Not failed" - Functional="ON" - Logical="Nominal" - Use="In use"  <u>RX2:</u> - Fail="Not failed" - Functional="ON" - Logical="Redundant" - Use="Not in use"		
		Verify Telemetry XpndRx1FailSts                      DEL59170		(None)
		Verify Telemetry XpndRx1FuncSts                      DEL58170		(None)
		Verify Telemetry XpndRx1LogSts                      DEL57170		(None)
		Verify Telemetry XpndRx1Use                            DEL56170		(None)
		Verify Telemetry XpndRx2FailSts                      DEL63170		(None)
		Verify Telemetry XpndRx2FuncSts                      DEL62170		(None)
		Verify Telemetry XpndRx2LogSts                      DEL61170		(None)
		Verify Telemetry XpndRx2Use                            DEL60170		(None)
		<b><u>RFDN TMs</u></b>		
		Expected configuration (assuming to work with TTC S/S branch 1 and that no RFDN failure occurred):  - <u>SW1:</u> "Pos A"=1 and "Pos B"=0  - <u>SW2:</u> "Pos A"=0 and "Pos B"=1  - <u>SW3:</u> "Pos A"=1 and "Pos B"=0  - <u>SW4:</u> "Pos A"=0 and "Pos B"=1		
		Verify Telemetry RFDN SW1 Pos A                      RMB05436		(None)
		Verify Telemetry RFDN SW1 Pos B                      RMB09436		(None)



Check Earth Acquisition mode configuration  
 File: H\_FCP\_DHS\_4004.xls  
 Author: S. Manganelli



Step No.	Time	Activity/Remarks	TC/TLM	Display/ Branch
		Verify Telemetry RFDN SW2 Pos A RMB06436		(None)
		Verify Telemetry RFDN SW2 Pos B RMB10436		(None)
		Verify Telemetry RFDN SW3 Pos A RMB07436		(None)
		Verify Telemetry RFDN SW3 Pos B RMB11436		(None)
		Verify Telemetry RFDN SW4 Pos A RMB08436		(None)
		Verify Telemetry RFDN SW4 Pos B RMB12436		(None)
		<b><u>TM Encoder (in use) and PCDU TMs</u></b>		
		Expected configuration (assuming to work with TTC S/S branch 1 and that no TTC failure occurred):  - <u>XPND1</u> LCL: "ON" - <u>TWTA1</u> OP-LCL: "ON" - <u>XPND2</u> LCL: "ON" - <u>TWTA2</u> OP-LCL: "OFF"		
		Verify Telemetry TME_BITRATE DEMRF160 = 150 Kbps		(None)
		Verify Telemetry Xpnd1Tx_L23_S WM12D565		(None)
		Verify Telemetry Twta_1_L49_1S WM22E565		(None)
		Verify Telemetry Twta_1_L49_2S WM22K565		(None)
		Verify Telemetry Xpnd2Tx_L16_S WM92C565		(None)
		Verify Telemetry Twta_2_L50_1S WM92E565		(None)
		Verify Telemetry Twta_2_L50_2S WM92K565		(None)
		<b><u>XPND1/2 1553 S/C bus TMs</u></b>		

Check Earth Acquisition mode configuration  
 File: H\_FCP\_DHS\_4004.xls  
 Author: S. Manganelli



Step No.	Time	Activity/Remarks	TC/TLM	Display/ Branch
		<p><b>Expected configuration (assuming to work with TTC S/S branch 1 and that no TTC failure occurred):</b></p> <p><b>XPND1:</b>            - TM MI=1.2            - RNG MI=0.6            - LR1="OFF"            - LR2="OFF"            - MR="ON"            - HR="OFF"            - RNG="OFF"            - CM="OFF"            - ER="OFF"            - Output Power Level="OFF"            - Internal Bit Pattern Generator="OFF"</p>		
		<p><b>XPND2:</b> is expected to have the same configuration as before transition to Earth Acquisition mode.</p>		
		Verify Telemetry X1 TM MD ID-TMI                      RMB33442		(None)
		Verify Telemetry X1 RNGMD ID-RMI                      RMB32442		(None)
		Verify Telemetry X1 LowRate-1 MD                      RMB30442		(None)
		Verify Telemetry X1 LowRate-2 MD                      RMB31442		(None)
		Verify Telemetry X1 MedRate-MRM                      RMB29442		(None)
		Verify Telemetry X1 HIRateMD-HRM                      RMB28442		(None)
		Verify Telemetry X1 Rang MOD-RM                      RMB27442		(None)
		Verify Telemetry X1 Coher MOD-CM                      RMB26442		(None)
		Verify Telemetry X1 Ext Ref - ER                      RMB25442		(None)
		Verify Telemetry X1 OutPowLevSet                      RMB35442		(None)
		Verify Telemetry X1 IntBitPatGen                      RMB34442		(None)
		Verify Telemetry X2 TM MD ID-TMI                      RMB54442		(None)

Check Earth Acquisition mode configuration  
 File: H\_FCP\_DHS\_4004.xls  
 Author: S. Manganelli



Step No.	Time	Activity/Remarks	TC/TLM	Display/ Branch
		Verify Telemetry X2 RNGMD ID-RMI RMB53442		(None)
		Verify Telemetry X2 LowRate-1 MD RMB51442		(None)
		Verify Telemetry X2 LowRate-2 MD RMB52442		(None)
		Verify Telemetry X2 MedRate-MRM RMB50442		(None)
		Verify Telemetry X2 HIRateMD-HRM RMB49442		(None)
		Verify Telemetry X2 Rang MD - RM RMB48442		(None)
		Verify Telemetry X2 Coher MOD-CM RMB47442		(None)
		Verify Telemetry X2 Ext Ref - ER RMB46442		(None)
		Verify Telemetry X2 OutPowLevSet RMB56442		(None)
		Verify Telemetry X2 IntBitPatGen RMB55442		(None)
		<b><u>XPND1/2 analogue TMs</u></b>		
		<b>Expected configuration (assuming to work with TTC S/S branch 1 and that no TTC failure occurred):</b>  <b>- TX1="ON"</b>  <b>- TX2="OFF"</b>  <b>- RF Output Power (for active TX)= -4 dBm</b>		
		Verify Telemetry TX1 ON-OFF Stat RMB15442		(None)
		Verify Telemetry RX1 125-4K Stat RMB17442	= 4 Kbps	(None)
		Verify Telemetry XPD1_RF1_OUT_PW RMB13442		(None)
		Verify Telemetry TX2 ON-OFF Stat RMB16442		(None)
		Verify Telemetry RX2 125-4K Stat RMB18442	= 4 Kbps	(None)
		Verify Telemetry XPD2_RF2_OUT_PW RMB14442		(None)

Check Earth Acquisition mode configuration  
 File: H\_FCP\_DHS\_4004.xls  
 Author: S. Manganelli



Step No.	Time	Activity/Remarks	TC/TLM	Display/ Branch
		<b><u>TWTA1/2 TMs</u></b>		
		Expected configuration (assuming to work with TTC S/S branch 1 and that no TTC failure occurred):  - <b><u>EPC1</u></b> = "ON" - <b><u>TWT1</u></b> = "ON" - <b><u>EPC2</u></b> = "OFF" - <b><u>TWT2</u></b> = "OFF"		
		Verify Telemetry <b>EPC1_ONOFF_STS</b> <b>RMB05439</b>		(None)
		Verify Telemetry <b>TWT1_ONOFF_STS</b> <b>RMB09439</b>		(None)
		Verify Telemetry <b>EPC2_ONOFF_STS</b> <b>RMB07439</b>		(None)
		Verify Telemetry <b>TWT2_ONOFF_STS</b> <b>RMB10439</b>		(None)
5		<i>CCUs check (status in UIU table and LCLs status in telemetry)</i>		Next Step: 6
		Verify Telemetry <b>CcuAFuncSts</b> <b>DEL97171</b> = On		(None)
		Verify Telemetry <b>CcuBFuncSts</b> <b>DEL96171</b> = On		(None)
		Verify Telemetry <b>Ccu_A_L37_S</b> <b>WM12A565</b> = ON		(None)
		Verify Telemetry <b>Ccu_B_L38_S</b> <b>WMA2A565</b> = ON		(None)
6		<i>ACMS check (status in UIU table and LCLs status in telemetry)</i>		Next Step: 7
		<b><u>CRS 1/2</u></b>		
		Verify Telemetry <b>Crs1HFuncSts</b> <b>DEN68171</b> = On		(None)
		Verify Telemetry <b>Crs2HFuncSts</b> <b>DEN69171</b> = On		(None)
		Verify Telemetry <b>CRS1_L15_S</b> <b>WM22C565</b> = ON		(None)

Check Earth Acquisition mode configuration  
 File: H\_FCP\_DHS\_4004.xls  
 Author: S. Manganelli



Step No.	Time	Activity/Remarks	TC/TLM	Display/ Branch
		Verify Telemetry CRS2_L24_S WMA2D565	= ON	(None)
		<b><u>Gyro A/B</u></b>		
		Verify Telemetry GyroA_L13_S WM92A565	= ON	(None)
		Verify Telemetry GyroB_L14_S WM22A565	= ON	(None)
		<b><u>STR 1/2</u></b>		
		Verify Telemetry STR_1_L21_S WMA2C565	= ON	(None)
		Verify Telemetry STR_2_L22_S WM12C565	= ON	(None)
		<b><u>RW 1/2/3/4</u></b>		
		Verify Telemetry Rw1_1_L55_1S WM22F565	= ON	(None)
		Verify Telemetry Rw1_1_L55_2S WM22L565	= ON	(None)
		Verify Telemetry Rw1_2_L56_1S WM92F565	= ON	(None)
		Verify Telemetry Rw1_2_L56_2S WM92L565	= ON	(None)
		Verify Telemetry Rw1_3_L57_1S WM12F565	= ON	(None)
		Verify Telemetry Rw1_3_L57_2S WM12K565	= ON	(None)
		Verify Telemetry Rw1_4_L58_1S WMA2F565	= ON	(None)
		Verify Telemetry Rw1_4_L58_2S WMA2K565	= ON	(None)
		<b><u>ACC A/B</u></b>		
		Verify Telemetry AccColdA_L33_S WM62B565	= ON	(None)
		Verify Telemetry AccColdB_L34_S WM52B565	= ON	(None)
		<b><u>RCS LV A/B</u></b>		
		Verify Telemetry RcsLvA_L47_1S WM12E565	= ON	(None)

Check Earth Acquisition mode configuration  
 File: H\_FCP\_DHS\_4004.xls  
 Author: S. Manganelli



Step No.	Time	Activity/Remarks	TC/TLM	Display/ Branch
		Verify Telemetry AccLvA_L47_2S WM12J565	= ON	(None)
		Verify Telemetry AccLvB_L48_1S WMA2E565	= ON	(None)
		Verify Telemetry AccLvB_L48_2S WMA2J565	= ON	(None)
		<b><u>RCS thruster A/B</u></b>		
		Verify Telemetry RcsThrsA_L45_1S WM22D565	= ON	(None)
		Verify Telemetry RcsThrsA_L45_2S WM22J565	= ON	(None)
		Verify Telemetry RcsThrsB_L46_1S WM92D565	= ON	(None)
		Verify Telemetry RcsThrsB_L46_2S WM92J565	= ON	(None)
		<b><u>RCS CBH A/B</u></b>  Expected configuration: LCL 17=ON, LCL 18=OFF		
		Verify Telemetry CBH_N_L17_S WMA2H565		(None)
		Verify Telemetry CBH_R_L18_S WM12H565		(None)
7		Send TC(14,3) to verify that the generation of all the CDMS HK packets and CCU periodic HK packets has been enabled		Next Step: 8
		<b>When this request is received, the enabled telemetry source packet of the CDMU are determined and a report (14,4) is generated.</b>		
		Execute Telecommand  ReportEnabledTm  TC Control Flags :  Subsch. ID : 10 Det. descr. : Report Enabled Telemetry Packets  GBM IL DSE --Y -- --	DC904180	
8		Verify that TM(14,4) has been received		Next Step: 9

Check Earth Acquisition mode configuration  
 File: H\_FCP\_DHS\_4004.xls  
 Author: S. Manganelli



Step No.	Time	Activity/Remarks	TC/TLM	Display/ Branch
		<p>The following HK have to be enabled:</p> <ul style="list-style-type: none"> <li>- CDMS: packet IDs 0x0 (High Rate), 0x8 (Low Rate), 0x40 (P1), 0x41 (P4), 0x42 (P64);</li> <li>- CCU: packet IDs 0x44 (CCU A Monit #1), 0x47 (CCU B Monit #1).</li> </ul>		
		<p>Verify Packet Reception  <b>TM Packet Generation Status Report</b>  <i>Packet Details:</i></p> <p style="text-align: right;"> <b>APID: 16</b>  <b>Type: 14</b>  <b>Subtype: 4</b>  <b>PI1:</b>  <b>PI2:</b> </p>	<b>TMpktGenRep</b>	
		<p>Verify Telemetry</p> <p style="text-align: center;"><b>N</b>                      <b>DE140180</b></p>		(None)
		<p><b>The following 3 parameters are repeated N times</b></p>		
		<p>Verify Telemetry</p> <p style="text-align: center;"><b>Type</b>                      <b>DE141180</b></p>		(None)
		<p>Verify Telemetry</p> <p style="text-align: center;"><b>Sub-Type</b>                      <b>DE142180</b></p>		(None)
		<p>Verify Telemetry</p> <p style="text-align: center;"><b>Packet-ID</b>                      <b>DE143180</b></p>		(None)
9		<p><i>Send TC(14,6) to verify that the downlink for all TM packets has been enabled</i></p>		Next Step: 10
		<p><b>When CDMU receives this request, the real time down-linking and SSMM storage status are determined for all telemetry packet {Application ID, Type, Sub-Type} and a report (14,7) is generated.</b></p>		
		<p>Execute Telecommand</p> <p style="text-align: center;"><b>RepDownlinkTMStorage</b></p> <p><i>TC Control Flags :</i></p> <p style="text-align: center;"><b>GBM IL DSE</b>  <b>--Y -- --</b></p> <p><i>Subsch. ID : 10</i>  <i>Det. descr. : Report Telemetry Packets Down-linking/ Storage Status</i></p>	<b>DC141160</b>	
10		<p><i>Verify that TM(14,7) has been received</i></p>		Next Step: END

Check Earth Acquisition mode configuration  
 File: H\_FCP\_DHS\_4004.xls  
 Author: S. Manganelli



Step No.	Time	Activity/Remarks	TC/TLM	Display/ Branch
		Verify Packet Reception <b>Telemetry Packets DownLinking-Storage Status Report</b> (14,7)-1400 <i>Packet Details:</i> APID: 16 Type: 14 Subtype: 7 PI1: PI2:		
		Verify Telemetry N DE042160		(None)
		<b>The following 3 parameters are repeated N times</b>		
		Verify Telemetry APID DE047160		(None)
		Verify Telemetry Type DE043160		(None)
		Verify Telemetry Sub-Type DE046160		(None)
		Verify Telemetry Transmit_Flag DE048160		(None)
		Verify Telemetry Storage_Flag DE049160		(None)
<b>End of Procedure</b>				