

Report reconfiguration module (TTR) status  
 File: H\_FCP\_DHS\_3075.xls  
 Author: S. Manganelli



## Procedure Summary

### Objectives

This procedure describes the steps needed to acquire the status of the ASW function "TTR Management" (0xFF for running idle or 0x00 for stopped).

It also includes the option to dump the Survival context and Alarm status reports.

### Summary of Constraints

n/a

### Spacecraft Configuration

#### Start of Procedure

- CDMU in default configuration, that is:
- PM A or B ON (nominally A)
  - TM Encoder/OBT A or B active (nominally A)
  - RM A and B enabled
  - MM A and B ON

#### End of Procedure

- CDMU in default configuration, that is:
- PM A or B ON (nominally A)
  - TM Encoder/OBT A or B active (nominally A)
  - RM A and B enabled
  - MM A and B ON

### Reference File(s)

#### Input Command Sequences

#### Output Command Sequences

HFD3075  
 HFD3075B  
 HFD3075A

### Referenced Displays

ANDs      GRDs      SLDs

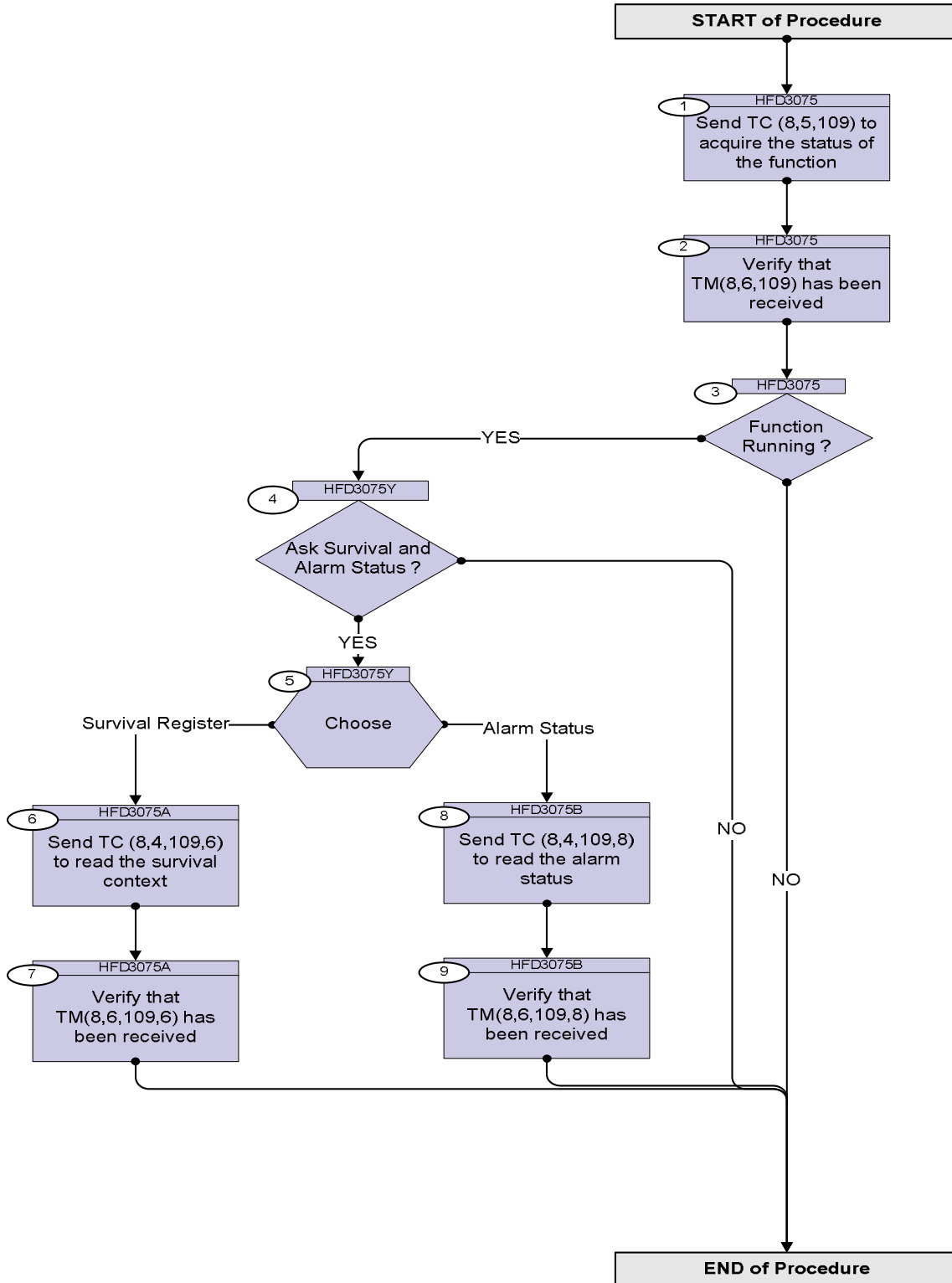
### Configuration Control Information

DATE	FOP ISSUE	VERSION	MODIFICATION DESCRIPTION	AUTHOR	SPR REF
08/01/08		1	Created	cmevi-hp	
09/01/08		2	Formal parameter name modified.	cmevi-hp	
24/01/08	1	3	Batch update of TC flags	S. Manganelli	
02/12/08	2	4	DB update following OBSW 3_6_2	S. Manganelli	
20/04/09	2.3	5	Restructured to provide the different options in a more flexible way	S. Manganelli	

Report reconfiguration module (TTR) status  
 File: H\_FCP\_DHS\_3075.xls  
 Author: S. Manganelli



### Procedure Flowchart Overview

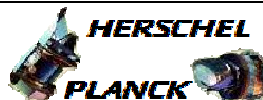


Report reconfiguration module (TTR) status  
 File: H\_FCP\_DHS\_3075.xls  
 Author: S. Manganelli



Step No.	Time	Activity/Remarks	TC/TLM	Display/ Branch
<b>Beginning of Procedure</b>				
TC Seq. Name :HFD3075 (Report TTR status)  TimeTag Type: N Sub Schedule ID:  <input type="checkbox"/>				
1		Send TC (8,5,109) to acquire the status of the function		Next Step: 2
		<b>Report TTR Management Status telecommand is used for requiring the status of the function as a telemetry packet.</b>  <b>This only returns if the function has been started or not.</b>		
		Execute Telecommand <div style="text-align: right;"><b>ReportTtrManagSts</b></div> TC Control Flags : <div style="text-align: right;">GBM IL DSE --Y -- ---</div> Subsch. ID : 10 Det. descr. : Report Ttr Management Status, TC(8,5,109)	DCN08170	
2		Verify that TM(8,6,109) has been received		Next Step: 3
		<b>Only one of the following two types of TM packets will be received</b>		
2.1		If the function is started		<input type="checkbox"/>
		Verify Packet Reception <b>TM 8-6-109-255 TTR Management Status Report - Running Idle</b> Packet Details: <div style="text-align: right;"> <b>TtrMngRun</b>              APID: 16              Type: 8              Subtype: 6              PI1: 28159              PI2: 0           </div>		
		Verify Packet Telemetry (Pkt = TtrMngRun) <div style="text-align: right;"> <b>Function_ID</b> DE008170 = <b>TTR_Manag</b> (None)           </div>		
		Verify Packet Telemetry (Pkt = TtrMngRun) <div style="text-align: right;"> <b>TtrManRptActId</b> DE368170 = <b>RunningIdle</b> (None)           </div>		
2.2		If the function is stopped		<input type="checkbox"/>

Report reconfiguration module (TTR) status  
 File: H\_FCP\_DHS\_3075.xls  
 Author: S. Manganelli



Step No.	Time	Activity/Remarks	TC/TLM	Display/ Branch
		Verify Packet Reception <b>TM 8-6-109-0 TTR Management Status Report - Stopped</b> <b>TtrMngStop</b> Packet Details: APID: 16 Type: 8 Subtype: 6 PI1: 27904 PI2: 0		
		Verify Packet Telemetry (Pkt = TtrMngStop) Function_ID DE008170 = TTR_Manag (None)		
		Verify Packet Telemetry (Pkt = TtrMngStop) TtrManRptActId DE368170 = Stopped (None)		
3		Function Running ?		Next Step: YES 4 NO END
TC Seq. Name :HFD3075Y (Dummy)  TimeTag Type: Sub Schedule ID:  <input type="checkbox"/>				
4		Ask Survival and Alarm Status ?		Next Step: NO END YES 5
5		Choose		Next Step: Survival Register 6 Alarm Status 8
TC Seq. Name :HFD3075A (Req Surv Register)  TimeTag Type: Sub Schedule ID: Formal Parameter List : RmId RMID=RM_A RM_A				
6		Send TC (8,4,109,6) to read the survival context		Next Step: 7
		<b>Note: RM in use (ID=03, logical addressing) is not allowed for TCs(8,4,109,x)</b>		

Report reconfiguration module (TTR) status  
 File: H\_FCP\_DHS\_3075.xls  
 Author: S. Manganelli



Step No.	Time	Activity/Remarks	TC/TLM	Display/ Branch
		Execute Telecommand ReadSurvContxt Command Parameter(s) : RmId                  DH093170 TC Control Flags : GBM IL DSE --Y -- --- Subsch. ID : 10 Det. descr. : TEMPLATE Read Survival Context TC(8,4,109,6)	DCT60170  RMID	
7		Verify that TM(8,6,109,6) has been received		Next Step: END
		Verify Packet Reception <b>TM 8-6-109-6 TTR Management - Survival Context Report</b> SurvCntxRpt Packet Details: APID:          16 Type:          8 Subtype:      6 PI1:          27910 PI2:          0		
		Verify Packet Telemetry (Pkt = SurvCntxRpt) Function_ID          DE008170   = TTR_Manag        (None)		
		Verify Packet Telemetry (Pkt = SurvCntxRpt) TtrManRptActId      DE368170   = SurvCntxRpt     (None)		
		Verify Packet Telemetry (Pkt = SurvCntxRpt) RmId                DE283170   = RMID             (None)		
		Verify Packet Telemetry (Pkt = SurvCntxRpt) SurvBits1          DE343170                         (None)		
		Verify Packet Telemetry (Pkt = SurvCntxRpt) SurvBits2          DE344170		
TC Seq. Name :HFD3075B (Req Alarm Status)  TimeTag Type: N Sub Schedule ID: Formal Parameter List : RmId RMID=RM_A   RM_A				
8		Send TC (8,4,109,8) to read the alarm status		Next Step: 9
		<b>Note: RM in use (ID=03, logical addressing) is not allowed for TCs(8,4,109,x)</b>		

Report reconfiguration module (TTR) status  
 File: H\_FCP\_DHS\_3075.xls  
 Author: S. Manganelli



Step No.	Time	Activity/Remarks	TC/TLM	Display/ Branch
		Execute Telecommand  <b>ReadAlarmSts</b>  <i>Command Parameter(s) :</i> <b>RmId</b> <b>DH093170</b>  <i>TC Control Flags :</i> <b>GBM IL DSE</b> <b>--Y -- ---</b>  <i>Subsch. ID : 10</i> <i>Det. descr. : TEMPLATE Read Alarm Status TC(8,4,109,8)</i>	<b>DCT62170</b>          <b>RMID</b>	
9		Verify that TM(8,6,109,8) has been received		Next Step: END
		Verify Packet Reception <b>TM 8-6-109-8 TTR Management - Alarm Status Report</b> <i>Packet Details:</i> <b>APID: 16</b> <b>Type: 8</b> <b>Subtype: 6</b> <b>PI1: 27912</b> <b>PI2: 0</b>	<b>AlarmStsRpt</b>	
		Verify Packet Telemetry (Pkt = AlarmStsRpt)  <b>Function_ID</b> <b>DE008170</b> = <b>TTR_Manag</b> (None)		
		Verify Packet Telemetry (Pkt = AlarmStsRpt)  <b>TtrManRptActId</b> <b>DE368170</b> = <b>AlarmStsRpt</b> (None)		
		Verify Packet Telemetry (Pkt = AlarmStsRpt)  <b>RmId</b> <b>DE283170</b> AND=ZAZ7R999		
		Verify Packet Telemetry (Pkt = AlarmStsRpt)  <b>WatchdogTogg</b> <b>DE345170</b> AND=ZAZ7R999		
		Verify Packet Telemetry (Pkt = AlarmStsRpt)  <b>ExtAlarm1DoD1</b> <b>DE346170</b> AND=ZAZ7R999		
		Verify Packet Telemetry (Pkt = AlarmStsRpt)  <b>ExtAlarm2DoD2</b> <b>DE347170</b>		
		Verify Packet Telemetry (Pkt = AlarmStsRpt)  <b>ExtAlarm3Ss5a6a</b> <b>DE348170</b>		
		Verify Packet Telemetry (Pkt = AlarmStsRpt)  <b>ExtAlarm4Ss5b6b</b> <b>DE349170</b>		
		Verify Packet Telemetry (Pkt = AlarmStsRpt)  <b>ExtAlarm5Ss3a4a</b> <b>DE350170</b>		
		Verify Packet Telemetry (Pkt = AlarmStsRpt)  <b>ExtAlarm6</b> <b>DE351170</b>		
		Verify Packet Telemetry (Pkt = AlarmStsRpt)  <b>ExtAlarm7</b> <b>DE352170</b>		
		Verify Packet Telemetry (Pkt = AlarmStsRpt)  <b>ExtAlarm8</b> <b>DE353170</b>		

Report reconfiguration module (TTR) status  
 File: H\_FCP\_DHS\_3075.xls  
 Author: S. Manganelli



Step No.	Time	Activity/Remarks	TC/TLM	Display/ Branch
		Verify Packet Telemetry (Pkt = AlarmStsRpt) <b>PMA SysErr</b> <b>DE354170</b>		
		Verify Packet Telemetry (Pkt = AlarmStsRpt) <b>PMA AlarmAll</b> <b>DE355170</b>		
		Verify Packet Telemetry (Pkt = AlarmStsRpt) <b>PMA UnderVolt</b> <b>DE356170</b>		
		Verify Packet Telemetry (Pkt = AlarmStsRpt) <b>PMA SWAlarm</b> <b>DE357170</b>		
		Verify Packet Telemetry (Pkt = AlarmStsRpt) <b>PMB SysErr</b> <b>DE358170</b>		
		Verify Packet Telemetry (Pkt = AlarmStsRpt) <b>PMB AlarmAll</b> <b>DE359170</b>		
		Verify Packet Telemetry (Pkt = AlarmStsRpt) <b>PMB UnderVolt</b> <b>DE360170</b>		
		Verify Packet Telemetry (Pkt = AlarmStsRpt) <b>PMB SWAlarm</b> <b>DE361170</b>		
		Verify Packet Telemetry (Pkt = AlarmStsRpt) <b>Select PM</b> <b>DE362170</b>		
		Verify Packet Telemetry (Pkt = AlarmStsRpt) <b>NotUsed1</b> <b>DE363170</b>		
		Verify Packet Telemetry (Pkt = AlarmStsRpt) <b>NotUsed2</b> <b>DE364170</b>		
		Verify Packet Telemetry (Pkt = AlarmStsRpt) <b>NotUsed3</b> <b>DE365170</b>		
		Verify Packet Telemetry (Pkt = AlarmStsRpt) <b>WatchdogEnable</b> <b>DE366170</b>		
<b>End of Procedure</b>				