

Report FDIR management function and FDIR cross correlated table  
 File: H\_FCP\_DHS\_3061.xls  
 Author: cmevi-hp



## Procedure Summary

### Objectives

The ASW function "FDIR Management" is responsible of FDIR, mostly based on the On-Board Monitoring and Event-Action services.

FDIR management implements Cross-correlated checks (hard-coded functions) for more complicated checks, where a monitoring of a single parameter is not sufficient.

This procedure describes the steps needed to acquire the status of the function (0xFF for running idle or 0x00 for stopped).

Moreover in the TM packets are also reported the parameter values of the cross correlation checks.

### Summary of Constraints

n/a

### Spacecraft Configuration

#### Start of Procedure

- CDMU in default configuration, that is:
- PM A or B ON (nominally A)
  - TM Encoder/OBT A or B active (nominally A)
  - RM A and B enabled
  - MM A and B ON

#### End of Procedure

- CDMU in default configuration, that is:
- PM A or B ON (nominally A)
  - TM Encoder/OBT A or B active (nominally A)
  - RM A and B enabled
  - MM A and B ON

### Reference File(s)

#### Input Command Sequences

#### Output Command Sequences

HFD3061

### Referenced Displays

ANDs      GRDs      SLDs

### Configuration Control Information

| DATE     | FOP ISSUE | VERSION | MODIFICATION DESCRIPTION         | AUTHOR       | SPR REF |
|----------|-----------|---------|----------------------------------|--------------|---------|
| 07/11/07 |           | 1       | Created                          | cmevi-hp     |         |
| 10/06/08 | 1         | 2       | TC Flag and Seq Properly changed | S. Manganeli |         |

Report FDIR management function and FDIR cross correlated table  
File: H\_FCP\_DHS\_3061.xls  
Author: cmevi-hp

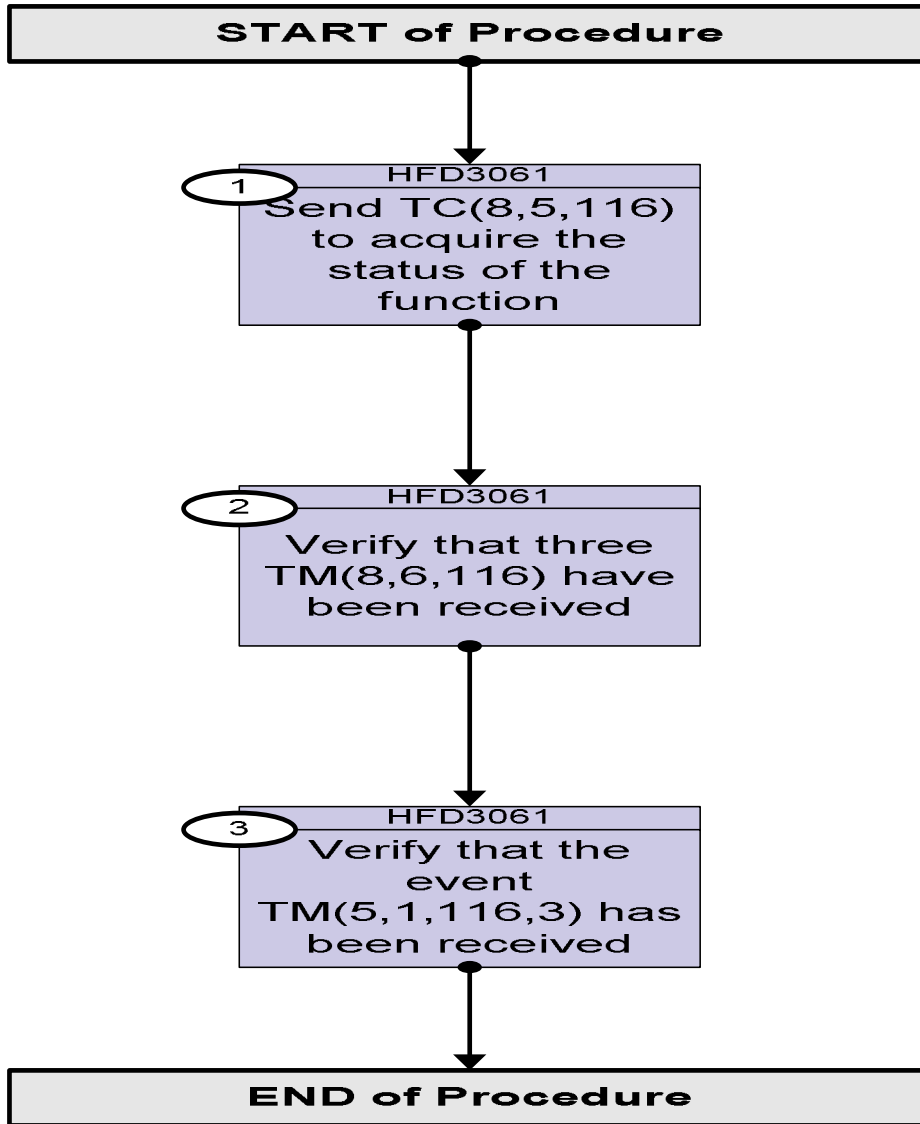


|          |   |   |  |          |  |
|----------|---|---|--|----------|--|
| 01/12/08 | 2 | 3 | Procedure updated according to latest version received from industry on 24/10/2008 | cmevi-hp |  |
|----------|---|---|--|----------|--|

Report FDIR management function and FDIR cross correlated table  
File: H\_FCP\_DHS\_3061.xls  
Author: cmevi-hp



### Procedure Flowchart Overview



Report FDIR management function and FDIR cross correlated table  
 File: H\_FCP\_DHS\_3061.xls  
 Author: cmevi-hp



| Step No.                                     | Time | Activity/Remarks  | TC/TLM     | Display/ Branch |
|--|------|---|------------|-----------------|
| <b>Beginning of Procedure</b>                |      |   |            |                 |
| TC Seq. Name :HFD3061 (Report FDIR function) |      |   |            |                 |
| TimeTag Type: N<br>Sub Schedule ID:<br><br>□ |      |   |            |                 |
| 1  |      | Send TC(8,5,116) to acquire the status of the function  |            | Next Step:<br>2 |
|  |      | <b>Report FDIR Management Status telecommand is used for requiring the status of the function as a telemetry packet.</b><br><br><b>Default status of the function: "started".</b>                   |            |                 |
|  |      | Execute Telecommand<br><br><b>ReportFdirManagSts</b><br><br>TC Control Flags :<br><br>Subsch. ID : 10<br>Det. descr. : Report Fdir Management Status,<br>TC(8,5,116)<br><br>GBM IL DSE<br>--Y -- -- | DCN02170   |                 |
| 2  |      | Verify that three TM(8,6,116) have been received  |            | Next Step:<br>3 |
|  |      | <b>Only one of the following two types of TM packets will be received</b>   |            |                 |
|  |      | <b>- If the function is started:</b>  |            |                 |
|  |      | Verify Packet Reception<br><b>TM 8-6-116 Fdir Management Status Report Running-Idle</b><br><b>0xFF</b><br>Packet Details:<br><br>APID: 16<br>Type: 8<br>Subtype: 6<br>PI1: 29951<br>PI2: 0          | FdirMngRun |                 |
|  |      | Verify Packet Telemetry (Pkt = FdirMngRun)<br><br><b>Function_ID DE008170 = FDIR_Manag</b>  |            | (None)          |
|  |      | Verify Packet Telemetry (Pkt = FdirMngRun)<br><br><b>FdirManagActiv DEY43170 = RunningIdle</b>  |            | (None)          |
|  |      | <b>- If the function is stopped:</b>  |            |                 |

Report FDIR management function and FDIR cross correlated table  
 File: H\_FCP\_DHS\_3061.xls  
 Author: cmevi-hp



| Step No. | Time | Activity/Remarks  | TC/TLM          | Display/ Branch |
|----------|------|---|-----------------|-----------------|
|          |      | Verify Packet Reception<br><b>TM 8-6-116 Fdir Management Status Report Stopped 0x00</b><br>Packet Details:<br>APID: 16<br>Type: 8<br>Subtype: 6<br>PI1: 29696<br>PI2: 0 | FdirMngStop     |                 |
|          |      | Verify Packet Telemetry (Pkt = FdirMngStop)<br><br><b>Function_ID DE008170</b>  | = FDIR_Manag    | (None)          |
|          |      | Verify Packet Telemetry (Pkt = FdirMngStop)<br><br><b>FdirManagActiv DEY43170</b>   | = Stopped       | (None)          |
|          |      | <b>The following two TM packets will be received in both the cases.</b>   |                 |                 |
|          |      | Verify Packet Reception<br><b>TM 8-6-116-1 FCCT contents report part 1</b><br>Packet Details:<br>APID: 16<br>Type: 8<br>Subtype: 6<br>PI1: 29697<br>PI2: 0              | FcctRpt1        |                 |
|          |      | Verify Packet Telemetry (Pkt = FcctRpt1)<br><br><b>Function_ID DE008170</b>   | = FDIR_Manag    | (None)          |
|          |      | Verify Packet Telemetry (Pkt = FcctRpt1)<br><br><b>FdirManagActiv DEY43170</b>  | = FcctContrRpt1 | (None)          |
|          |      | Verify Packet Telemetry (Pkt = FcctRpt1)<br><br><b>XpndNRxFclCuMin DE502170</b>   |                 | (None)          |
|          |      | Verify Packet Telemetry (Pkt = FcctRpt1)<br><br><b>XpndNRxFclCuMax DE503170</b>   |                 | (None)          |
|          |      | Verify Packet Telemetry (Pkt = FcctRpt1)<br><br><b>RxNSupVMin DE504170</b>  |                 |                 |
|          |      | Verify Packet Telemetry (Pkt = FcctRpt1)<br><br><b>RxNSupVMax DE505170</b>  |                 |                 |
|          |      | Verify Packet Telemetry (Pkt = FcctRpt1)<br><br><b>XpndRRxFclCuMin DE506170</b>   |                 |                 |
|          |      | Verify Packet Telemetry (Pkt = FcctRpt1)<br><br><b>XpndRRxFclCuMax DE507170</b>   |                 |                 |
|          |      | Verify Packet Telemetry (Pkt = FcctRpt1)<br><br><b>RxRedSupplVMin DE508170</b>  |                 |                 |
|          |      | Verify Packet Telemetry (Pkt = FcctRpt1)<br><br><b>RxRedSupplVMax DE509170</b>  |                 |                 |
|          |      | Verify Packet Telemetry (Pkt = FcctRpt1)<br><br><b>FdirLowNOP1 DE510170</b>   |                 |                 |

Report FDIR management function and FDIR cross correlated table  
 File: H\_FCP\_DHS\_3061.xls  
 Author: cmevi-hp



| Step No. | Time | Activity/Remarks  | TC/TLM | Display/ Branch |
|----------|------|---|--------|-----------------|
|          |      | Verify Packet Telemetry (Pkt = FcctRpt1)<br><b>FdirHighNOP1</b> <b>DE511170</b>   |        |                 |
|          |      | Verify Packet Telemetry (Pkt = FcctRpt1)<br><b>Timeout1</b> <b>DE512170</b>       |        |                 |
|          |      | Verify Packet Telemetry (Pkt = FcctRpt1)<br><b>ColdStartTemp1</b> <b>DE513170</b> |        |                 |
|          |      | Verify Packet Telemetry (Pkt = FcctRpt1)<br><b>FdirLowOP1</b> <b>DE514170</b>     |        |                 |
|          |      | Verify Packet Telemetry (Pkt = FcctRpt1)<br><b>FdirHighOP1</b> <b>DE515170</b>    |        |                 |
|          |      | Verify Packet Telemetry (Pkt = FcctRpt1)<br><b>FdirLowNOP2</b> <b>DE518170</b>    |        |                 |
|          |      | Verify Packet Telemetry (Pkt = FcctRpt1)<br><b>FdirHighNOP2</b> <b>DE519170</b>   |        |                 |
|          |      | Verify Packet Telemetry (Pkt = FcctRpt1)<br><b>Timeout2</b> <b>DE520170</b>       |        |                 |
|          |      | Verify Packet Telemetry (Pkt = FcctRpt1)<br><b>ColdStartTemp2</b> <b>DE521170</b> |        |                 |
|          |      | Verify Packet Telemetry (Pkt = FcctRpt1)<br><b>FdirLowOP2</b> <b>DE522170</b>     |        |                 |
|          |      | Verify Packet Telemetry (Pkt = FcctRpt1)<br><b>FdirHighOP2</b> <b>DE523170</b>    |        |                 |
|          |      | Verify Packet Telemetry (Pkt = FcctRpt1)<br><b>FdirLowNOP3</b> <b>DE526170</b>    |        |                 |
|          |      | Verify Packet Telemetry (Pkt = FcctRpt1)<br><b>FdirHighNOP3</b> <b>DE527170</b>   |        |                 |
|          |      | Verify Packet Telemetry (Pkt = FcctRpt1)<br><b>Timeout3</b> <b>DE528170</b>       |        |                 |
|          |      | Verify Packet Telemetry (Pkt = FcctRpt1)<br><b>ColdStartTemp3</b> <b>DE529170</b> |        |                 |
|          |      | Verify Packet Telemetry (Pkt = FcctRpt1)<br><b>FdirLowOP3</b> <b>DE530170</b>     |        |                 |
|          |      | Verify Packet Telemetry (Pkt = FcctRpt1)<br><b>FdirHighOP3</b> <b>DE531170</b>    |        |                 |
|          |      | Verify Packet Telemetry (Pkt = FcctRpt1)<br><b>FdirLowNOP4</b> <b>DE534170</b>    |        |                 |
|          |      | Verify Packet Telemetry (Pkt = FcctRpt1)<br><b>FdirHighNOP4</b> <b>DE535170</b>   |        |                 |
|          |      | Verify Packet Telemetry (Pkt = FcctRpt1)<br><b>Timeout4</b> <b>DE536170</b>       |        |                 |

Report FDIR management function and FDIR cross correlated table  
 File: H\_FCP\_DHS\_3061.xls  
 Author: cmevi-hp



| Step No. | Time | Activity/Remarks  | TC/TLM | Display/ Branch |
|----------|------|---|--------|-----------------|
|          |      | Verify Packet Telemetry (Pkt = FcctRpt1)<br><b>ColdStartTemp4</b> <b>DE537170</b> |        |                 |
|          |      | Verify Packet Telemetry (Pkt = FcctRpt1)<br><b>FdirLowOP4</b> <b>DE538170</b>     |        |                 |
|          |      | Verify Packet Telemetry (Pkt = FcctRpt1)<br><b>FdirHighOP4</b> <b>DE539170</b>    |        |                 |
|          |      | Verify Packet Telemetry (Pkt = FcctRpt1)<br><b>FdirLowNOP5</b> <b>DE542170</b>    |        |                 |
|          |      | Verify Packet Telemetry (Pkt = FcctRpt1)<br><b>FdirHighNOP5</b> <b>DE543170</b>   |        |                 |
|          |      | Verify Packet Telemetry (Pkt = FcctRpt1)<br><b>Timeout5</b> <b>DE544170</b>       |        |                 |
|          |      | Verify Packet Telemetry (Pkt = FcctRpt1)<br><b>ColdStartTemp5</b> <b>DE545170</b> |        |                 |
|          |      | Verify Packet Telemetry (Pkt = FcctRpt1)<br><b>FdirLowOP5</b> <b>DE546170</b>     |        |                 |
|          |      | Verify Packet Telemetry (Pkt = FcctRpt1)<br><b>FdirHighOP5</b> <b>DE547170</b>    |        |                 |
|          |      | Verify Packet Telemetry (Pkt = FcctRpt1)<br><b>FdirLowNOP6</b> <b>DE550170</b>    |        |                 |
|          |      | Verify Packet Telemetry (Pkt = FcctRpt1)<br><b>FdirHighNOP6</b> <b>DE551170</b>   |        |                 |
|          |      | Verify Packet Telemetry (Pkt = FcctRpt1)<br><b>Timeout6</b> <b>DE552170</b>       |        |                 |
|          |      | Verify Packet Telemetry (Pkt = FcctRpt1)<br><b>ColdStartTemp6</b> <b>DE553170</b> |        |                 |
|          |      | Verify Packet Telemetry (Pkt = FcctRpt1)<br><b>FdirLowOP6</b> <b>DE554170</b>     |        |                 |
|          |      | Verify Packet Telemetry (Pkt = FcctRpt1)<br><b>FdirHighOP6</b> <b>DE555170</b>    |        |                 |
|          |      | Verify Packet Telemetry (Pkt = FcctRpt1)<br><b>FdirLowNOP7</b> <b>DE558170</b>    |        |                 |
|          |      | Verify Packet Telemetry (Pkt = FcctRpt1)<br><b>FdirHighNOP7</b> <b>DE559170</b>   |        |                 |
|          |      | Verify Packet Telemetry (Pkt = FcctRpt1)<br><b>Timeout7</b> <b>DE560170</b>       |        |                 |
|          |      | Verify Packet Telemetry (Pkt = FcctRpt1)<br><b>ColdStartTemp7</b> <b>DE561170</b> |        |                 |
|          |      | Verify Packet Telemetry (Pkt = FcctRpt1)<br><b>FdirLowOP7</b> <b>DE562170</b>     |        |                 |

Report FDIR management function and FDIR cross correlated table  
 File: H\_FCP\_DHS\_3061.xls  
 Author: cmevi-hp



| Step No. | Time | Activity/Remarks  | TC/TLM | Display/ Branch |
|----------|------|---|--------|-----------------|
|          |      | Verify Packet Telemetry (Pkt = FcctRpt1)<br><b>FdirHighOP7</b> DE563170     |        |                 |
|          |      | Verify Packet Telemetry (Pkt = FcctRpt1)<br><b>FdirLowNOP8</b> DE566170     |        |                 |
|          |      | Verify Packet Telemetry (Pkt = FcctRpt1)<br><b>FdirHighNOP8</b> DE567170    |        |                 |
|          |      | Verify Packet Telemetry (Pkt = FcctRpt1)<br><b>Timeout8</b> DE568170        |        |                 |
|          |      | Verify Packet Telemetry (Pkt = FcctRpt1)<br><b>ColdStartTemp8</b> DE569170  |        |                 |
|          |      | Verify Packet Telemetry (Pkt = FcctRpt1)<br><b>FdirLowOP8</b> DE570170      |        |                 |
|          |      | Verify Packet Telemetry (Pkt = FcctRpt1)<br><b>FdirHighOP8</b> DE571170     |        |                 |
|          |      | Verify Packet Telemetry (Pkt = FcctRpt1)<br><b>FdirLowNOP9</b> DE574170     |        |                 |
|          |      | Verify Packet Telemetry (Pkt = FcctRpt1)<br><b>FdirHighNOP9</b> DE575170    |        |                 |
|          |      | Verify Packet Telemetry (Pkt = FcctRpt1)<br><b>Timeout9</b> DE576170        |        |                 |
|          |      | Verify Packet Telemetry (Pkt = FcctRpt1)<br><b>ColdStartTemp9</b> DE577170  |        |                 |
|          |      | Verify Packet Telemetry (Pkt = FcctRpt1)<br><b>FdirLowOP9</b> DE578170      |        |                 |
|          |      | Verify Packet Telemetry (Pkt = FcctRpt1)<br><b>FdirHighOP9</b> DE579170     |        |                 |
|          |      | Verify Packet Telemetry (Pkt = FcctRpt1)<br><b>FdirLowNOP10</b> DE582170    |        |                 |
|          |      | Verify Packet Telemetry (Pkt = FcctRpt1)<br><b>FdirHighNOP10</b> DE583170   |        |                 |
|          |      | Verify Packet Telemetry (Pkt = FcctRpt1)<br><b>Timeout10</b> DE584170       |        |                 |
|          |      | Verify Packet Telemetry (Pkt = FcctRpt1)<br><b>ColdStartTemp10</b> DE585170 |        |                 |
|          |      | Verify Packet Telemetry (Pkt = FcctRpt1)<br><b>FdirLowOP10</b> DE586170     |        |                 |
|          |      | Verify Packet Telemetry (Pkt = FcctRpt1)<br><b>FdirHighOP10</b> DE587170    |        |                 |
|          |      | Verify Packet Telemetry (Pkt = FcctRpt1)<br><b>FdirLowNOP11</b> DE590170    |        |                 |



Report FDIR management function and FDIR cross correlated table  
 File: H\_FCP\_DHS\_3061.xls  
 Author: cmevi-hp



| Step No. | Time | Activity/Remarks   | TC/TLM | Display/ Branch |
|----------|------|--|--------|-----------------|
|          |      | Verify Packet Telemetry (Pkt = FcctRpt1)<br><b>FdirHighNOP11</b> <b>DE591170</b>   |        |                 |
|          |      | Verify Packet Telemetry (Pkt = FcctRpt1)<br><b>Timeout11</b> <b>DE592170</b>       |        |                 |
|          |      | Verify Packet Telemetry (Pkt = FcctRpt1)<br><b>ColdStartTemp11</b> <b>DE593170</b> |        |                 |
|          |      | Verify Packet Telemetry (Pkt = FcctRpt1)<br><b>FdirLowOP11</b> <b>DE594170</b>     |        |                 |
|          |      | Verify Packet Telemetry (Pkt = FcctRpt1)<br><b>FdirHighOP11</b> <b>DE595170</b>    |        |                 |
|          |      | Verify Packet Telemetry (Pkt = FcctRpt1)<br><b>FdirLowNOP12</b> <b>DE598170</b>    |        |                 |
|          |      | Verify Packet Telemetry (Pkt = FcctRpt1)<br><b>FdirHighNOP12</b> <b>DE599170</b>   |        |                 |
|          |      | Verify Packet Telemetry (Pkt = FcctRpt1)<br><b>Timeout12</b> <b>DE600170</b>       |        |                 |
|          |      | Verify Packet Telemetry (Pkt = FcctRpt1)<br><b>ColdStartTemp12</b> <b>DE601170</b> |        |                 |
|          |      | Verify Packet Telemetry (Pkt = FcctRpt1)<br><b>FdirLowOP12</b> <b>DE602170</b>     |        |                 |
|          |      | Verify Packet Telemetry (Pkt = FcctRpt1)<br><b>FdirHighOP12</b> <b>DE603170</b>    |        |                 |
|          |      | Verify Packet Telemetry (Pkt = FcctRpt1)<br><b>FdirLowNOP13</b> <b>DE606170</b>    |        |                 |
|          |      | Verify Packet Telemetry (Pkt = FcctRpt1)<br><b>FdirHighNOP13</b> <b>DE607170</b>   |        |                 |
|          |      | Verify Packet Telemetry (Pkt = FcctRpt1)<br><b>Timeout13</b> <b>DE608170</b>       |        |                 |
|          |      | Verify Packet Telemetry (Pkt = FcctRpt1)<br><b>ColdStartTemp13</b> <b>DE609170</b> |        |                 |
|          |      | Verify Packet Telemetry (Pkt = FcctRpt1)<br><b>FdirLowOP13</b> <b>DE610170</b>     |        |                 |
|          |      | Verify Packet Telemetry (Pkt = FcctRpt1)<br><b>FdirHighOP13</b> <b>DE611170</b>    |        |                 |
|          |      | Verify Packet Telemetry (Pkt = FcctRpt1)<br><b>FdirLowNOP14</b> <b>DE614170</b>    |        |                 |
|          |      | Verify Packet Telemetry (Pkt = FcctRpt1)<br><b>FdirHighNOP14</b> <b>DE615170</b>   |        |                 |
|          |      | Verify Packet Telemetry (Pkt = FcctRpt1)<br><b>Timeout14</b> <b>DE616170</b>       |        |                 |

Report FDIR management function and FDIR cross correlated table  
 File: H\_FCP\_DHS\_3061.xls  
 Author: cmevi-hp



| Step No. | Time | Activity/Remarks   | TC/TLM | Display/ Branch |
|----------|------|--|--------|-----------------|
|          |      | Verify Packet Telemetry (Pkt = FcctRpt1)<br><b>ColdStartTemp14</b> <b>DE617170</b> |        |                 |
|          |      | Verify Packet Telemetry (Pkt = FcctRpt1)<br><b>FdirLowOP14</b> <b>DE618170</b>     |        |                 |
|          |      | Verify Packet Telemetry (Pkt = FcctRpt1)<br><b>FdirHighOP14</b> <b>DE619170</b>    |        |                 |
|          |      | Verify Packet Telemetry (Pkt = FcctRpt1)<br><b>FdirLowNOP15</b> <b>DE622170</b>    |        |                 |
|          |      | Verify Packet Telemetry (Pkt = FcctRpt1)<br><b>FdirHighNOP15</b> <b>DE623170</b>   |        |                 |
|          |      | Verify Packet Telemetry (Pkt = FcctRpt1)<br><b>Timeout15</b> <b>DE624170</b>       |        |                 |
|          |      | Verify Packet Telemetry (Pkt = FcctRpt1)<br><b>ColdStartTemp15</b> <b>DE625170</b> |        |                 |
|          |      | Verify Packet Telemetry (Pkt = FcctRpt1)<br><b>FdirLowOP15</b> <b>DE626170</b>     |        |                 |
|          |      | Verify Packet Telemetry (Pkt = FcctRpt1)<br><b>FdirHighOP15</b> <b>DE627170</b>    |        |                 |
|          |      | Verify Packet Telemetry (Pkt = FcctRpt1)<br><b>FdirLowNOP16</b> <b>DE630170</b>    |        |                 |
|          |      | Verify Packet Telemetry (Pkt = FcctRpt1)<br><b>FdirHighNOP16</b> <b>DE631170</b>   |        |                 |
|          |      | Verify Packet Telemetry (Pkt = FcctRpt1)<br><b>Timeout16</b> <b>DE632170</b>       |        |                 |
|          |      | Verify Packet Telemetry (Pkt = FcctRpt1)<br><b>ColdStartTemp16</b> <b>DE633170</b> |        |                 |
|          |      | Verify Packet Telemetry (Pkt = FcctRpt1)<br><b>FdirLowOP16</b> <b>DE634170</b>     |        |                 |
|          |      | Verify Packet Telemetry (Pkt = FcctRpt1)<br><b>FdirHighOP16</b> <b>DE635170</b>    |        |                 |
|          |      | Verify Packet Telemetry (Pkt = FcctRpt1)<br><b>FdirLowNOP17</b> <b>DE638170</b>    |        |                 |
|          |      | Verify Packet Telemetry (Pkt = FcctRpt1)<br><b>FdirHighNOP17</b> <b>DE639170</b>   |        |                 |
|          |      | Verify Packet Telemetry (Pkt = FcctRpt1)<br><b>Timeout17</b> <b>DE640170</b>       |        |                 |
|          |      | Verify Packet Telemetry (Pkt = FcctRpt1)<br><b>ColdStartTemp17</b> <b>DE641170</b> |        |                 |
|          |      | Verify Packet Telemetry (Pkt = FcctRpt1)<br><b>FdirLowOP17</b> <b>DE642170</b>     |        |                 |

Report FDIR management function and FDIR cross correlated table  
 File: H\_FCP\_DHS\_3061.xls  
 Author: cmevi-hp



| Step No. | Time | Activity/Remarks   | TC/TLM | Display/ Branch |
|----------|------|--|--------|-----------------|
|          |      | Verify Packet Telemetry (Pkt = FcctRpt1)<br><b>FdirHighOP17</b> <b>DE643170</b>    |        |                 |
|          |      | Verify Packet Telemetry (Pkt = FcctRpt1)<br><b>FdirLowNOP18</b> <b>DE646170</b>    |        |                 |
|          |      | Verify Packet Telemetry (Pkt = FcctRpt1)<br><b>FdirHighNOP18</b> <b>DE647170</b>   |        |                 |
|          |      | Verify Packet Telemetry (Pkt = FcctRpt1)<br><b>Timeout18</b> <b>DE648170</b>       |        |                 |
|          |      | Verify Packet Telemetry (Pkt = FcctRpt1)<br><b>ColdStartTemp18</b> <b>DE649170</b> |        |                 |
|          |      | Verify Packet Telemetry (Pkt = FcctRpt1)<br><b>FdirLowOP18</b> <b>DE650170</b>     |        |                 |
|          |      | Verify Packet Telemetry (Pkt = FcctRpt1)<br><b>FdirHighOP18</b> <b>DE651170</b>    |        |                 |
|          |      | Verify Packet Telemetry (Pkt = FcctRpt1)<br><b>FdirLowNOP19</b> <b>DE654170</b>    |        |                 |
|          |      | Verify Packet Telemetry (Pkt = FcctRpt1)<br><b>FdirHighNOP19</b> <b>DE655170</b>   |        |                 |
|          |      | Verify Packet Telemetry (Pkt = FcctRpt1)<br><b>Timeout19</b> <b>DE656170</b>       |        |                 |
|          |      | Verify Packet Telemetry (Pkt = FcctRpt1)<br><b>ColdStartTemp19</b> <b>DE657170</b> |        |                 |
|          |      | Verify Packet Telemetry (Pkt = FcctRpt1)<br><b>FdirLowOP19</b> <b>DE658170</b>     |        |                 |
|          |      | Verify Packet Telemetry (Pkt = FcctRpt1)<br><b>FdirHighOP19</b> <b>DE659170</b>    |        |                 |
|          |      | Verify Packet Telemetry (Pkt = FcctRpt1)<br><b>FdirLowNOP20</b> <b>DE662170</b>    |        |                 |
|          |      | Verify Packet Telemetry (Pkt = FcctRpt1)<br><b>FdirHighNOP20</b> <b>DE663170</b>   |        |                 |
|          |      | Verify Packet Telemetry (Pkt = FcctRpt1)<br><b>Timeout20</b> <b>DE664170</b>       |        |                 |
|          |      | Verify Packet Telemetry (Pkt = FcctRpt1)<br><b>ColdStartTemp20</b> <b>DE665170</b> |        |                 |
|          |      | Verify Packet Telemetry (Pkt = FcctRpt1)<br><b>FdirLowOP20</b> <b>DE666170</b>     |        |                 |
|          |      | Verify Packet Telemetry (Pkt = FcctRpt1)<br><b>FdirHighOP20</b> <b>DE667170</b>    |        |                 |
|          |      | Verify Packet Telemetry (Pkt = FcctRpt1)<br><b>FdirLowNOP21</b> <b>DE670170</b>    |        |                 |

Report FDIR management function and FDIR cross correlated table  
 File: H\_FCP\_DHS\_3061.xls  
 Author: cmevi-hp



| Step No. | Time | Activity/Remarks   | TC/TLM | Display/ Branch |
|----------|------|--|--------|-----------------|
|          |      | Verify Packet Telemetry (Pkt = FcctRpt1)<br><b>FdirHighNOP21</b> <b>DE671170</b>   |        |                 |
|          |      | Verify Packet Telemetry (Pkt = FcctRpt1)<br><b>Timeout21</b> <b>DE672170</b>       |        |                 |
|          |      | Verify Packet Telemetry (Pkt = FcctRpt1)<br><b>ColdStartTemp21</b> <b>DE673170</b> |        |                 |
|          |      | Verify Packet Telemetry (Pkt = FcctRpt1)<br><b>FdirLowOP21</b> <b>DE674170</b>     |        |                 |
|          |      | Verify Packet Telemetry (Pkt = FcctRpt1)<br><b>FdirHighOP21</b> <b>DE675170</b>    |        |                 |
|          |      | Verify Packet Telemetry (Pkt = FcctRpt1)<br><b>FdirLowNOP22</b> <b>DE678170</b>    |        |                 |
|          |      | Verify Packet Telemetry (Pkt = FcctRpt1)<br><b>FdirHighNOP22</b> <b>DE679170</b>   |        |                 |
|          |      | Verify Packet Telemetry (Pkt = FcctRpt1)<br><b>Timeout22</b> <b>DE680170</b>       |        |                 |
|          |      | Verify Packet Telemetry (Pkt = FcctRpt1)<br><b>ColdStartTemp22</b> <b>DE681170</b> |        |                 |
|          |      | Verify Packet Telemetry (Pkt = FcctRpt1)<br><b>FdirLowOP22</b> <b>DE682170</b>     |        |                 |
|          |      | Verify Packet Telemetry (Pkt = FcctRpt1)<br><b>FdirHighOP22</b> <b>DE683170</b>    |        |                 |
|          |      | Verify Packet Telemetry (Pkt = FcctRpt1)<br><b>FdirLowNOP23</b> <b>DE686170</b>    |        |                 |
|          |      | Verify Packet Telemetry (Pkt = FcctRpt1)<br><b>FdirHighNOP23</b> <b>DE687170</b>   |        |                 |
|          |      | Verify Packet Telemetry (Pkt = FcctRpt1)<br><b>Timeout23</b> <b>DE688170</b>       |        |                 |
|          |      | Verify Packet Telemetry (Pkt = FcctRpt1)<br><b>ColdStartTemp23</b> <b>DE689170</b> |        |                 |
|          |      | Verify Packet Telemetry (Pkt = FcctRpt1)<br><b>FdirLowOP23</b> <b>DE690170</b>     |        |                 |
|          |      | Verify Packet Telemetry (Pkt = FcctRpt1)<br><b>FdirHighOP23</b> <b>DE691170</b>    |        |                 |
|          |      | Verify Packet Telemetry (Pkt = FcctRpt1)<br><b>FdirLowNOP24</b> <b>DE694170</b>    |        |                 |
|          |      | Verify Packet Telemetry (Pkt = FcctRpt1)<br><b>FdirHighNOP24</b> <b>DE695170</b>   |        |                 |
|          |      | Verify Packet Telemetry (Pkt = FcctRpt1)<br><b>Timeout24</b> <b>DE696170</b>       |        |                 |

Report FDIR management function and FDIR cross correlated table  
 File: H\_FCP\_DHS\_3061.xls  
 Author: cmevi-hp



| Step No. | Time | Activity/Remarks   | TC/TLM | Display/ Branch |
|----------|------|--|--------|-----------------|
|          |      | Verify Packet Telemetry (Pkt = FcctRpt1)<br><b>ColdStartTemp24</b> <b>DE697170</b> |        |                 |
|          |      | Verify Packet Telemetry (Pkt = FcctRpt1)<br><b>FdirLowOP24</b> <b>DE698170</b>     |        |                 |
|          |      | Verify Packet Telemetry (Pkt = FcctRpt1)<br><b>FdirHighOP24</b> <b>DE699170</b>    |        |                 |
|          |      | Verify Packet Telemetry (Pkt = FcctRpt1)<br><b>FdirLowNOP25</b> <b>DE702170</b>    |        |                 |
|          |      | Verify Packet Telemetry (Pkt = FcctRpt1)<br><b>FdirHighNOP25</b> <b>DE703170</b>   |        |                 |
|          |      | Verify Packet Telemetry (Pkt = FcctRpt1)<br><b>Timeout25</b> <b>DE704170</b>       |        |                 |
|          |      | Verify Packet Telemetry (Pkt = FcctRpt1)<br><b>ColdStartTemp25</b> <b>DE705170</b> |        |                 |
|          |      | Verify Packet Telemetry (Pkt = FcctRpt1)<br><b>FdirLowOP25</b> <b>DE706170</b>     |        |                 |
|          |      | Verify Packet Telemetry (Pkt = FcctRpt1)<br><b>FdirHighOP25</b> <b>DE707170</b>    |        |                 |
|          |      | Verify Packet Telemetry (Pkt = FcctRpt1)<br><b>FdirLowNOP26</b> <b>DE710170</b>    |        |                 |
|          |      | Verify Packet Telemetry (Pkt = FcctRpt1)<br><b>FdirHighNOP26</b> <b>DE711170</b>   |        |                 |
|          |      | Verify Packet Telemetry (Pkt = FcctRpt1)<br><b>Timeout26</b> <b>DE712170</b>       |        |                 |
|          |      | Verify Packet Telemetry (Pkt = FcctRpt1)<br><b>ColdStartTemp26</b> <b>DE713170</b> |        |                 |
|          |      | Verify Packet Telemetry (Pkt = FcctRpt1)<br><b>FdirLowOP26</b> <b>DE714170</b>     |        |                 |
|          |      | Verify Packet Telemetry (Pkt = FcctRpt1)<br><b>FdirHighOP26</b> <b>DE715170</b>    |        |                 |
|          |      | Verify Packet Telemetry (Pkt = FcctRpt1)<br><b>FdirLowNOP27</b> <b>DE718170</b>    |        |                 |
|          |      | Verify Packet Telemetry (Pkt = FcctRpt1)<br><b>FdirHighNOP27</b> <b>DE719170</b>   |        |                 |
|          |      | Verify Packet Telemetry (Pkt = FcctRpt1)<br><b>Timeout27</b> <b>DE720170</b>       |        |                 |
|          |      | Verify Packet Telemetry (Pkt = FcctRpt1)<br><b>ColdStartTemp27</b> <b>DE721170</b> |        |                 |
|          |      | Verify Packet Telemetry (Pkt = FcctRpt1)<br><b>FdirLowOP27</b> <b>DE722170</b>     |        |                 |

Report FDIR management function and FDIR cross correlated table  
 File: H\_FCP\_DHS\_3061.xls  
 Author: cmevi-hp



| Step No. | Time | Activity/Remarks  | TC/TLM                | Display/ Branch |
|----------|------|---|-----------------------|-----------------|
|          |      | Verify Packet Telemetry (Pkt = FcctRpt1)<br><b>FdirHighOP27</b> <b>DE723170</b>   |                       |                 |
|          |      | Verify Packet Reception<br><b>TM 8-6-116-2 FCCT contents report part 2</b><br>Packet Details:<br><b>APID: 16</b><br><b>Type: 8</b><br><b>Subtype: 6</b><br><b>PI1: 29698</b><br><b>PI2: 0</b> | <b>FcctRpt2</b>       |                 |
|          |      | Verify Packet Telemetry (Pkt = FcctRpt2)<br><b>Function_ID</b> <b>DE008170</b>  | <b>= FDIR_Manag</b>   | (None)          |
|          |      | Verify Packet Telemetry (Pkt = FcctRpt2)<br><b>FdirManagActiv</b> <b>DEY43170</b>   | <b>= FcctContRpt2</b> | (None)          |
|          |      | Verify Packet Telemetry (Pkt = FcctRpt2)<br><b>FdirLowNOP28</b> <b>DE726170</b>   |                       |                 |
|          |      | Verify Packet Telemetry (Pkt = FcctRpt2)<br><b>FdirHighNOP28</b> <b>DE727170</b>  |                       |                 |
|          |      | Verify Packet Telemetry (Pkt = FcctRpt2)<br><b>Timeout28</b> <b>DE728170</b>  |                       |                 |
|          |      | Verify Packet Telemetry (Pkt = FcctRpt2)<br><b>ColdStartTemp28</b> <b>DE729170</b>  |                       |                 |
|          |      | Verify Packet Telemetry (Pkt = FcctRpt2)<br><b>FdirLowOP28</b> <b>DE730170</b>  |                       |                 |
|          |      | Verify Packet Telemetry (Pkt = FcctRpt2)<br><b>FdirHighOP28</b> <b>DE731170</b>   |                       |                 |
|          |      | Verify Packet Telemetry (Pkt = FcctRpt2)<br><b>FdirLowNOP29</b> <b>DE734170</b>   |                       |                 |
|          |      | Verify Packet Telemetry (Pkt = FcctRpt2)<br><b>FdirHighNOP29</b> <b>DE735170</b>  |                       |                 |
|          |      | Verify Packet Telemetry (Pkt = FcctRpt2)<br><b>Timeout29</b> <b>DE736170</b>  |                       |                 |
|          |      | Verify Packet Telemetry (Pkt = FcctRpt2)<br><b>ColdStartTemp29</b> <b>DE737170</b>  |                       |                 |
|          |      | Verify Packet Telemetry (Pkt = FcctRpt2)<br><b>FdirLowOP29</b> <b>DE738170</b>  |                       |                 |
|          |      | Verify Packet Telemetry (Pkt = FcctRpt2)<br><b>FdirHighOP29</b> <b>DE739170</b>   |                       |                 |
|          |      | Verify Packet Telemetry (Pkt = FcctRpt2)<br><b>FdirLowNOP30</b> <b>DE742170</b>   |                       |                 |
|          |      | Verify Packet Telemetry (Pkt = FcctRpt2)<br><b>FdirHighNOP30</b> <b>DE743170</b>  |                       |                 |

Report FDIR management function and FDIR cross correlated table  
 File: H\_FCP\_DHS\_3061.xls  
 Author: cmevi-hp



| Step No. | Time | Activity/Remarks   | TC/TLM | Display/ Branch |
|----------|------|--|--------|-----------------|
|          |      | Verify Packet Telemetry (Pkt = FcctRpt2)<br><b>Timeout30</b> <b>DE744170</b>       |        |                 |
|          |      | Verify Packet Telemetry (Pkt = FcctRpt2)<br><b>ColdStartTemp30</b> <b>DE745170</b> |        |                 |
|          |      | Verify Packet Telemetry (Pkt = FcctRpt2)<br><b>FdirLowOP30</b> <b>DE746170</b>     |        |                 |
|          |      | Verify Packet Telemetry (Pkt = FcctRpt2)<br><b>FdirHighOP30</b> <b>DE747170</b>    |        |                 |
|          |      | Verify Packet Telemetry (Pkt = FcctRpt2)<br><b>FdirLowNOP31</b> <b>DE750170</b>    |        |                 |
|          |      | Verify Packet Telemetry (Pkt = FcctRpt2)<br><b>FdirHighNOP31</b> <b>DE751170</b>   |        |                 |
|          |      | Verify Packet Telemetry (Pkt = FcctRpt2)<br><b>Timeout31</b> <b>DE752170</b>       |        |                 |
|          |      | Verify Packet Telemetry (Pkt = FcctRpt2)<br><b>ColdStartTemp31</b> <b>DE753170</b> |        |                 |
|          |      | Verify Packet Telemetry (Pkt = FcctRpt2)<br><b>FdirLowOP31</b> <b>DE754170</b>     |        |                 |
|          |      | Verify Packet Telemetry (Pkt = FcctRpt2)<br><b>FdirHighOP31</b> <b>DE755170</b>    |        |                 |
|          |      | Verify Packet Telemetry (Pkt = FcctRpt2)<br><b>FdirLowNOP32</b> <b>DE758170</b>    |        |                 |
|          |      | Verify Packet Telemetry (Pkt = FcctRpt2)<br><b>FdirHighNOP32</b> <b>DE759170</b>   |        |                 |
|          |      | Verify Packet Telemetry (Pkt = FcctRpt2)<br><b>Timeout32</b> <b>DE760170</b>       |        |                 |
|          |      | Verify Packet Telemetry (Pkt = FcctRpt2)<br><b>ColdStartTemp32</b> <b>DE761170</b> |        |                 |
|          |      | Verify Packet Telemetry (Pkt = FcctRpt2)<br><b>FdirLowOP32</b> <b>DE762170</b>     |        |                 |
|          |      | Verify Packet Telemetry (Pkt = FcctRpt2)<br><b>FdirHighOP32</b> <b>DE763170</b>    |        |                 |
|          |      | Verify Packet Telemetry (Pkt = FcctRpt2)<br><b>FdirLowNOP33</b> <b>DE766170</b>    |        |                 |
|          |      | Verify Packet Telemetry (Pkt = FcctRpt2)<br><b>FdirHighNOP33</b> <b>DE767170</b>   |        |                 |
|          |      | Verify Packet Telemetry (Pkt = FcctRpt2)<br><b>Timeout33</b> <b>DE768170</b>       |        |                 |
|          |      | Verify Packet Telemetry (Pkt = FcctRpt2)<br><b>ColdStartTemp33</b> <b>DE769170</b> |        |                 |

Report FDIR management function and FDIR cross correlated table  
 File: H\_FCP\_DHS\_3061.xls  
 Author: cmevi-hp



| Step No. | Time | Activity/Remarks   | TC/TLM | Display/ Branch |
|----------|------|--|--------|-----------------|
|          |      | Verify Packet Telemetry (Pkt = FcctRpt2)<br><b>FdirLowOP33</b> <b>DE770170</b>     |        |                 |
|          |      | Verify Packet Telemetry (Pkt = FcctRpt2)<br><b>FdirHighOP33</b> <b>DE771170</b>    |        |                 |
|          |      | Verify Packet Telemetry (Pkt = FcctRpt2)<br><b>FdirLowNOP34</b> <b>DE774170</b>    |        |                 |
|          |      | Verify Packet Telemetry (Pkt = FcctRpt2)<br><b>FdirHighNOP34</b> <b>DE775170</b>   |        |                 |
|          |      | Verify Packet Telemetry (Pkt = FcctRpt2)<br><b>Timeout34</b> <b>DE776170</b>       |        |                 |
|          |      | Verify Packet Telemetry (Pkt = FcctRpt2)<br><b>ColdStartTemp34</b> <b>DE777170</b> |        |                 |
|          |      | Verify Packet Telemetry (Pkt = FcctRpt2)<br><b>FdirLowOP34</b> <b>DE778170</b>     |        |                 |
|          |      | Verify Packet Telemetry (Pkt = FcctRpt2)<br><b>FdirHighOP34</b> <b>DE779170</b>    |        |                 |
|          |      | Verify Packet Telemetry (Pkt = FcctRpt2)<br><b>FdirLowNOP35</b> <b>DE782170</b>    |        |                 |
|          |      | Verify Packet Telemetry (Pkt = FcctRpt2)<br><b>FdirHighNOP35</b> <b>DE783170</b>   |        |                 |
|          |      | Verify Packet Telemetry (Pkt = FcctRpt2)<br><b>Timeout35</b> <b>DE784170</b>       |        |                 |
|          |      | Verify Packet Telemetry (Pkt = FcctRpt2)<br><b>ColdStartTemp35</b> <b>DE785170</b> |        |                 |
|          |      | Verify Packet Telemetry (Pkt = FcctRpt2)<br><b>FdirLowOP35</b> <b>DE786170</b>     |        |                 |
|          |      | Verify Packet Telemetry (Pkt = FcctRpt2)<br><b>FdirHighOP35</b> <b>DE787170</b>    |        |                 |
|          |      | Verify Packet Telemetry (Pkt = FcctRpt2)<br><b>FdirLowNOP36</b> <b>DE790170</b>    |        |                 |
|          |      | Verify Packet Telemetry (Pkt = FcctRpt2)<br><b>FdirHighNOP36</b> <b>DE791170</b>   |        |                 |
|          |      | Verify Packet Telemetry (Pkt = FcctRpt2)<br><b>Timeout36</b> <b>DE792170</b>       |        |                 |
|          |      | Verify Packet Telemetry (Pkt = FcctRpt2)<br><b>ColdStartTemp36</b> <b>DE793170</b> |        |                 |
|          |      | Verify Packet Telemetry (Pkt = FcctRpt2)<br><b>FdirLowOP36</b> <b>DE794170</b>     |        |                 |
|          |      | Verify Packet Telemetry (Pkt = FcctRpt2)<br><b>FdirHighOP36</b> <b>DE795170</b>    |        |                 |



Report FDIR management function and FDIR cross correlated table  
 File: H\_FCP\_DHS\_3061.xls  
 Author: cmevi-hp



| Step No. | Time | Activity/Remarks   | TC/TLM | Display/ Branch |
|----------|------|--|--------|-----------------|
|          |      | Verify Packet Telemetry (Pkt = FcctRpt2)<br><b>FdirLowNOP37</b> <b>DE798170</b>    |        |                 |
|          |      | Verify Packet Telemetry (Pkt = FcctRpt2)<br><b>FdirHighNOP37</b> <b>DE799170</b>   |        |                 |
|          |      | Verify Packet Telemetry (Pkt = FcctRpt2)<br><b>Timeout37</b> <b>DEZ00170</b>       |        |                 |
|          |      | Verify Packet Telemetry (Pkt = FcctRpt2)<br><b>ColdStartTemp37</b> <b>DEZ01170</b> |        |                 |
|          |      | Verify Packet Telemetry (Pkt = FcctRpt2)<br><b>FdirLowOP37</b> <b>DEZ02170</b>     |        |                 |
|          |      | Verify Packet Telemetry (Pkt = FcctRpt2)<br><b>FdirHighOP37</b> <b>DEZ03170</b>    |        |                 |
|          |      | Verify Packet Telemetry (Pkt = FcctRpt2)<br><b>FdirLowNOP38</b> <b>DEZ06170</b>    |        |                 |
|          |      | Verify Packet Telemetry (Pkt = FcctRpt2)<br><b>FdirHighNOP38</b> <b>DEZ07170</b>   |        |                 |
|          |      | Verify Packet Telemetry (Pkt = FcctRpt2)<br><b>Timeout38</b> <b>DEZ08170</b>       |        |                 |
|          |      | Verify Packet Telemetry (Pkt = FcctRpt2)<br><b>ColdStartTemp38</b> <b>DEZ09170</b> |        |                 |
|          |      | Verify Packet Telemetry (Pkt = FcctRpt2)<br><b>FdirLowOP38</b> <b>DEZ10170</b>     |        |                 |
|          |      | Verify Packet Telemetry (Pkt = FcctRpt2)<br><b>FdirHighOP38</b> <b>DEZ11170</b>    |        |                 |
|          |      | Verify Packet Telemetry (Pkt = FcctRpt2)<br><b>FdirLowNOP39</b> <b>DEZ14170</b>    |        |                 |
|          |      | Verify Packet Telemetry (Pkt = FcctRpt2)<br><b>FdirHighNOP39</b> <b>DEZ15170</b>   |        |                 |
|          |      | Verify Packet Telemetry (Pkt = FcctRpt2)<br><b>Timeout39</b> <b>DEZ16170</b>       |        |                 |
|          |      | Verify Packet Telemetry (Pkt = FcctRpt2)<br><b>ColdStartTemp39</b> <b>DEZ17170</b> |        |                 |
|          |      | Verify Packet Telemetry (Pkt = FcctRpt2)<br><b>FdirLowOP39</b> <b>DEZ18170</b>     |        |                 |
|          |      | Verify Packet Telemetry (Pkt = FcctRpt2)<br><b>FdirHighOP39</b> <b>DEZ19170</b>    |        |                 |
|          |      | Verify Packet Telemetry (Pkt = FcctRpt2)<br><b>FdirLowNOP40</b> <b>DEZ22170</b>    |        |                 |
|          |      | Verify Packet Telemetry (Pkt = FcctRpt2)<br><b>FdirHighNOP40</b> <b>DEZ23170</b>   |        |                 |

Report FDIR management function and FDIR cross correlated table  
 File: H\_FCP\_DHS\_3061.xls  
 Author: cmevi-hp



| Step No. | Time | Activity/Remarks   | TC/TLM | Display/ Branch |
|----------|------|--|--------|-----------------|
|          |      | Verify Packet Telemetry (Pkt = FcctRpt2)<br><b>Timeout40</b> <b>DEZ24170</b>       |        |                 |
|          |      | Verify Packet Telemetry (Pkt = FcctRpt2)<br><b>ColdStartTemp40</b> <b>DEZ25170</b> |        |                 |
|          |      | Verify Packet Telemetry (Pkt = FcctRpt2)<br><b>FdirLowOP40</b> <b>DEZ26170</b>     |        |                 |
|          |      | Verify Packet Telemetry (Pkt = FcctRpt2)<br><b>FdirHighOP40</b> <b>DEZ27170</b>    |        |                 |
|          |      | Verify Packet Telemetry (Pkt = FcctRpt2)<br><b>FdirLowNOP41</b> <b>DEZ30170</b>    |        |                 |
|          |      | Verify Packet Telemetry (Pkt = FcctRpt2)<br><b>FdirHighNOP41</b> <b>DEZ31170</b>   |        |                 |
|          |      | Verify Packet Telemetry (Pkt = FcctRpt2)<br><b>Timeout41</b> <b>DEZ32170</b>       |        |                 |
|          |      | Verify Packet Telemetry (Pkt = FcctRpt2)<br><b>ColdStartTemp41</b> <b>DEZ33170</b> |        |                 |
|          |      | Verify Packet Telemetry (Pkt = FcctRpt2)<br><b>FdirLowOP41</b> <b>DEZ34170</b>     |        |                 |
|          |      | Verify Packet Telemetry (Pkt = FcctRpt2)<br><b>FdirHighOP41</b> <b>DEZ35170</b>    |        |                 |
|          |      | Verify Packet Telemetry (Pkt = FcctRpt2)<br><b>FdirLowNOP42</b> <b>DEZ38170</b>    |        |                 |
|          |      | Verify Packet Telemetry (Pkt = FcctRpt2)<br><b>FdirHighNOP42</b> <b>DEZ39170</b>   |        |                 |
|          |      | Verify Packet Telemetry (Pkt = FcctRpt2)<br><b>Timeout42</b> <b>DEZ40170</b>       |        |                 |
|          |      | Verify Packet Telemetry (Pkt = FcctRpt2)<br><b>ColdStartTemp42</b> <b>DEZ41170</b> |        |                 |
|          |      | Verify Packet Telemetry (Pkt = FcctRpt2)<br><b>FdirLowOP42</b> <b>DEZ42170</b>     |        |                 |
|          |      | Verify Packet Telemetry (Pkt = FcctRpt2)<br><b>FdirHighOP42</b> <b>DEZ43170</b>    |        |                 |
|          |      | Verify Packet Telemetry (Pkt = FcctRpt2)<br><b>FdirLowNOP43</b> <b>DEZ46170</b>    |        |                 |
|          |      | Verify Packet Telemetry (Pkt = FcctRpt2)<br><b>FdirHighNOP43</b> <b>DEZ47170</b>   |        |                 |
|          |      | Verify Packet Telemetry (Pkt = FcctRpt2)<br><b>Timeout43</b> <b>DEZ48170</b>       |        |                 |
|          |      | Verify Packet Telemetry (Pkt = FcctRpt2)<br><b>ColdStartTemp43</b> <b>DEZ49170</b> |        |                 |

Report FDIR management function and FDIR cross correlated table  
 File: H\_FCP\_DHS\_3061.xls  
 Author: cmevi-hp



| Step No. | Time | Activity/Remarks   | TC/TLM | Display/ Branch |
|----------|------|--|--------|-----------------|
|          |      | Verify Packet Telemetry (Pkt = FcctRpt2)<br><b>FdirLowOP43</b> <b>DEZ50170</b>     |        |                 |
|          |      | Verify Packet Telemetry (Pkt = FcctRpt2)<br><b>FdirHighOP43</b> <b>DEZ51170</b>    |        |                 |
|          |      | Verify Packet Telemetry (Pkt = FcctRpt2)<br><b>FdirLowNOP44</b> <b>DEZ54170</b>    |        |                 |
|          |      | Verify Packet Telemetry (Pkt = FcctRpt2)<br><b>FdirHighNOP44</b> <b>DEZ55170</b>   |        |                 |
|          |      | Verify Packet Telemetry (Pkt = FcctRpt2)<br><b>Timeout44</b> <b>DEZ56170</b>       |        |                 |
|          |      | Verify Packet Telemetry (Pkt = FcctRpt2)<br><b>ColdStartTemp44</b> <b>DEZ57170</b> |        |                 |
|          |      | Verify Packet Telemetry (Pkt = FcctRpt2)<br><b>FdirLowOP44</b> <b>DEZ58170</b>     |        |                 |
|          |      | Verify Packet Telemetry (Pkt = FcctRpt2)<br><b>FdirHighOP44</b> <b>DEZ59170</b>    |        |                 |
|          |      | Verify Packet Telemetry (Pkt = FcctRpt2)<br><b>FdirLowNOP45</b> <b>DEZ62170</b>    |        |                 |
|          |      | Verify Packet Telemetry (Pkt = FcctRpt2)<br><b>FdirHighNOP45</b> <b>DEZ63170</b>   |        |                 |
|          |      | Verify Packet Telemetry (Pkt = FcctRpt2)<br><b>Timeout45</b> <b>DEZ64170</b>       |        |                 |
|          |      | Verify Packet Telemetry (Pkt = FcctRpt2)<br><b>ColdStartTemp45</b> <b>DEZ65170</b> |        |                 |
|          |      | Verify Packet Telemetry (Pkt = FcctRpt2)<br><b>FdirLowOP45</b> <b>DEZ66170</b>     |        |                 |
|          |      | Verify Packet Telemetry (Pkt = FcctRpt2)<br><b>FdirHighOP45</b> <b>DEZ67170</b>    |        |                 |
|          |      | Verify Packet Telemetry (Pkt = FcctRpt2)<br><b>FdirLowNOP46</b> <b>DEZ70170</b>    |        |                 |
|          |      | Verify Packet Telemetry (Pkt = FcctRpt2)<br><b>FdirHighNOP46</b> <b>DEZ71170</b>   |        |                 |
|          |      | Verify Packet Telemetry (Pkt = FcctRpt2)<br><b>Timeout46</b> <b>DEZ72170</b>       |        |                 |
|          |      | Verify Packet Telemetry (Pkt = FcctRpt2)<br><b>ColdStartTemp46</b> <b>DEZ73170</b> |        |                 |
|          |      | Verify Packet Telemetry (Pkt = FcctRpt2)<br><b>FdirLowOP46</b> <b>DEZ74170</b>     |        |                 |
|          |      | Verify Packet Telemetry (Pkt = FcctRpt2)<br><b>FdirHighOP46</b> <b>DEZ75170</b>    |        |                 |

Report FDIR management function and FDIR cross correlated table  
 File: H\_FCP\_DHS\_3061.xls  
 Author: cmevi-hp



| Step No. | Time | Activity/Remarks   | TC/TLM | Display/ Branch |
|----------|------|--|--------|-----------------|
|          |      | Verify Packet Telemetry (Pkt = FcctRpt2)<br><b>FdirLowNOP47</b> <b>DEZ78170</b>    |        |                 |
|          |      | Verify Packet Telemetry (Pkt = FcctRpt2)<br><b>FdirHighNOP47</b> <b>DEZ79170</b>   |        |                 |
|          |      | Verify Packet Telemetry (Pkt = FcctRpt2)<br><b>Timeout47</b> <b>DEZ80170</b>       |        |                 |
|          |      | Verify Packet Telemetry (Pkt = FcctRpt2)<br><b>ColdStartTemp47</b> <b>DEZ81170</b> |        |                 |
|          |      | Verify Packet Telemetry (Pkt = FcctRpt2)<br><b>FdirLowOP47</b> <b>DEZ82170</b>     |        |                 |
|          |      | Verify Packet Telemetry (Pkt = FcctRpt2)<br><b>FdirHighOP47</b> <b>DEZ83170</b>    |        |                 |
|          |      | Verify Packet Telemetry (Pkt = FcctRpt2)<br><b>FdirLowNOP48</b> <b>DEZ86170</b>    |        |                 |
|          |      | Verify Packet Telemetry (Pkt = FcctRpt2)<br><b>FdirHighNOP48</b> <b>DEZ87170</b>   |        |                 |
|          |      | Verify Packet Telemetry (Pkt = FcctRpt2)<br><b>Timeout48</b> <b>DEZ88170</b>       |        |                 |
|          |      | Verify Packet Telemetry (Pkt = FcctRpt2)<br><b>ColdStartTemp48</b> <b>DEZ89170</b> |        |                 |
|          |      | Verify Packet Telemetry (Pkt = FcctRpt2)<br><b>FdirLowOP48</b> <b>DEZ90170</b>     |        |                 |
|          |      | Verify Packet Telemetry (Pkt = FcctRpt2)<br><b>FdirHighOP48</b> <b>DEZ91170</b>    |        |                 |
|          |      | Verify Packet Telemetry (Pkt = FcctRpt2)<br><b>FdirLowNOP49</b> <b>DEZ94170</b>    |        |                 |
|          |      | Verify Packet Telemetry (Pkt = FcctRpt2)<br><b>FdirHighNOP49</b> <b>DEZ95170</b>   |        |                 |
|          |      | Verify Packet Telemetry (Pkt = FcctRpt2)<br><b>Timeout49</b> <b>DEZ96170</b>       |        |                 |
|          |      | Verify Packet Telemetry (Pkt = FcctRpt2)<br><b>ColdStartTemp49</b> <b>DEZ97170</b> |        |                 |
|          |      | Verify Packet Telemetry (Pkt = FcctRpt2)<br><b>FdirLowOP49</b> <b>DEZ98170</b>     |        |                 |
|          |      | Verify Packet Telemetry (Pkt = FcctRpt2)<br><b>FdirHighOP49</b> <b>DEZ99170</b>    |        |                 |
|          |      | Verify Packet Telemetry (Pkt = FcctRpt2)<br><b>FdirLowNOP50</b> <b>DEY02170</b>    |        |                 |
|          |      | Verify Packet Telemetry (Pkt = FcctRpt2)<br><b>FdirHighNOP50</b> <b>DEY03170</b>   |        |                 |

Report FDIR management function and FDIR cross correlated table  
 File: H\_FCP\_DHS\_3061.xls  
 Author: cmevi-hp



| Step No. | Time | Activity/Remarks   | TC/TLM | Display/ Branch |
|----------|------|--|--------|-----------------|
|          |      | Verify Packet Telemetry (Pkt = FcctRpt2)<br><b>Timeout50</b> <b>DEY04170</b>       |        |                 |
|          |      | Verify Packet Telemetry (Pkt = FcctRpt2)<br><b>ColdStartTemp50</b> <b>DEY05170</b> |        |                 |
|          |      | Verify Packet Telemetry (Pkt = FcctRpt2)<br><b>FdirLowOP50</b> <b>DEY06170</b>     |        |                 |
|          |      | Verify Packet Telemetry (Pkt = FcctRpt2)<br><b>FdirHighOP50</b> <b>DEY07170</b>    |        |                 |
|          |      | Verify Packet Telemetry (Pkt = FcctRpt2)<br><b>FdirLowNOP51</b> <b>DEY10170</b>    |        |                 |
|          |      | Verify Packet Telemetry (Pkt = FcctRpt2)<br><b>FdirHighNOP51</b> <b>DEY11170</b>   |        |                 |
|          |      | Verify Packet Telemetry (Pkt = FcctRpt2)<br><b>Timeout51</b> <b>DEY12170</b>       |        |                 |
|          |      | Verify Packet Telemetry (Pkt = FcctRpt2)<br><b>ColdStartTemp51</b> <b>DEY13170</b> |        |                 |
|          |      | Verify Packet Telemetry (Pkt = FcctRpt2)<br><b>FdirLowOP51</b> <b>DEY14170</b>     |        |                 |
|          |      | Verify Packet Telemetry (Pkt = FcctRpt2)<br><b>FdirHighOP51</b> <b>DEY15170</b>    |        |                 |
|          |      | Verify Packet Telemetry (Pkt = FcctRpt2)<br><b>FdirLowNOP52</b> <b>DEY18170</b>    |        |                 |
|          |      | Verify Packet Telemetry (Pkt = FcctRpt2)<br><b>FdirHighNOP52</b> <b>DEY19170</b>   |        |                 |
|          |      | Verify Packet Telemetry (Pkt = FcctRpt2)<br><b>Timeout52</b> <b>DEY20170</b>       |        |                 |
|          |      | Verify Packet Telemetry (Pkt = FcctRpt2)<br><b>ColdStartTemp52</b> <b>DEY21170</b> |        |                 |
|          |      | Verify Packet Telemetry (Pkt = FcctRpt2)<br><b>FdirLowOP52</b> <b>DEY22170</b>     |        |                 |
|          |      | Verify Packet Telemetry (Pkt = FcctRpt2)<br><b>FdirHighOP52</b> <b>DEY23170</b>    |        |                 |
|          |      | Verify Packet Telemetry (Pkt = FcctRpt2)<br><b>FdirLowNOP53</b> <b>DEY26170</b>    |        |                 |
|          |      | Verify Packet Telemetry (Pkt = FcctRpt2)<br><b>FdirHighNOP53</b> <b>DEY27170</b>   |        |                 |
|          |      | Verify Packet Telemetry (Pkt = FcctRpt2)<br><b>Timeout53</b> <b>DEY28170</b>       |        |                 |
|          |      | Verify Packet Telemetry (Pkt = FcctRpt2)<br><b>ColdStartTemp53</b> <b>DEY29170</b> |        |                 |

Report FDIR management function and FDIR cross correlated table  
 File: H\_FCP\_DHS\_3061.xls  
 Author: cmevi-hp



| Step No.                | Time | Activity/Remarks   | TC/TLM                  | Display/ Branch   |
|-------------------------|------|--|-------------------------|-------------------|
|                         |      | Verify Packet Telemetry (Pkt = FcctRpt2)<br><b>FdirLowOP53</b> <b>DEY30170</b>   |                         |                   |
|                         |      | Verify Packet Telemetry (Pkt = FcctRpt2)<br><b>FdirHighOP53</b> <b>DEY31170</b>  |                         |                   |
|                         |      | Verify Packet Telemetry (Pkt = FcctRpt2)<br><b>FdirLowNOP54</b> <b>DEY34170</b>  |                         |                   |
|                         |      | Verify Packet Telemetry (Pkt = FcctRpt2)<br><b>FdirHighNOP54</b> <b>DEY35170</b>   |                         |                   |
|                         |      | Verify Packet Telemetry (Pkt = FcctRpt2)<br><b>Timeout54</b> <b>DEY36170</b>   |                         |                   |
|                         |      | Verify Packet Telemetry (Pkt = FcctRpt2)<br><b>ColdStartTemp54</b> <b>DEY37170</b>   |                         |                   |
|                         |      | Verify Packet Telemetry (Pkt = FcctRpt2)<br><b>FdirLowOP54</b> <b>DEY38170</b>   |                         |                   |
|                         |      | Verify Packet Telemetry (Pkt = FcctRpt2)<br><b>FdirHighOP54</b> <b>DEY39170</b>  |                         |                   |
|                         |      | Verify Packet Telemetry (Pkt = FcctRpt2)<br><b>InstrTmDeltaT</b> <b>DEY42170</b>   |                         |                   |
| 3                       |      | Verify that the event <i>TM(5,1,116,3)</i> has been received   |                         | Next Step:<br>END |
|                         |      | <b>This event is sent whenever a requested telemetry dump of TM(8,6,116) has ended.</b><br><br><b>It contains the number of telemetry packets issued in the dump.</b>                            |                         |                   |
|                         |      | Verify Packet Reception<br><b>CdmuAsw Event 5-1 TM 8-6-116 Dump Ended</b><br>Packet Details:<br><br><b>APID: 16</b><br><b>Type: 5</b><br><b>Subtype: 1</b><br><b>PI1: 29699</b><br><b>PI2: 0</b> | <b>D_EvRp_295</b>       |                   |
|                         |      | Verify Packet Telemetry (Pkt = D_EvRp_295)<br><b>TM5xEventID</b> <b>DEZSJ170</b>   | <b>= FdirMngDumpEnd</b> | (None)            |
|                         |      | Verify Packet Telemetry (Pkt = D_EvRp_295)<br><b>NrOfDumpedPkts</b> <b>DEY46170</b>  | <b>= 3 &lt;dec&gt;</b>  | (None)            |
| <b>End of Procedure</b> |      |  |                         |                   |