

Enable or disable burst mode for a remote terminal
 File: H_FCP_DHS_3054.xls
 Author: S. Manganelli



Procedure Summary

Objectives

This procedure describes the steps needed to enable or disable the "Burst Mode" for one of the following remote terminal:

- HIFI;
- PACS;
- SPIRE.

Summary of Constraints

Only one remote terminal at a time can be in Burst Mode.

Spacecraft Configuration

Start of Procedure

CDMU in default configuration, that is:

- PM A or B ON (nominally A)
- TM Encoder/OBT A or B active (nominally A)
- RM A and B enabled
- MM A and B ON

End of Procedure

CDMU in default configuration, that is:

- PM A or B ON (nominally A)
- TM Encoder/OBT A or B active (nominally A)
- RM A and B enabled
- MM A and B ON

Reference File(s)

Input Command Sequences

Output Command Sequences

HFD3054B
 HFD3054C

Referenced Displays

ANDs **GRDs** **SLDs**
 ZAZAF999

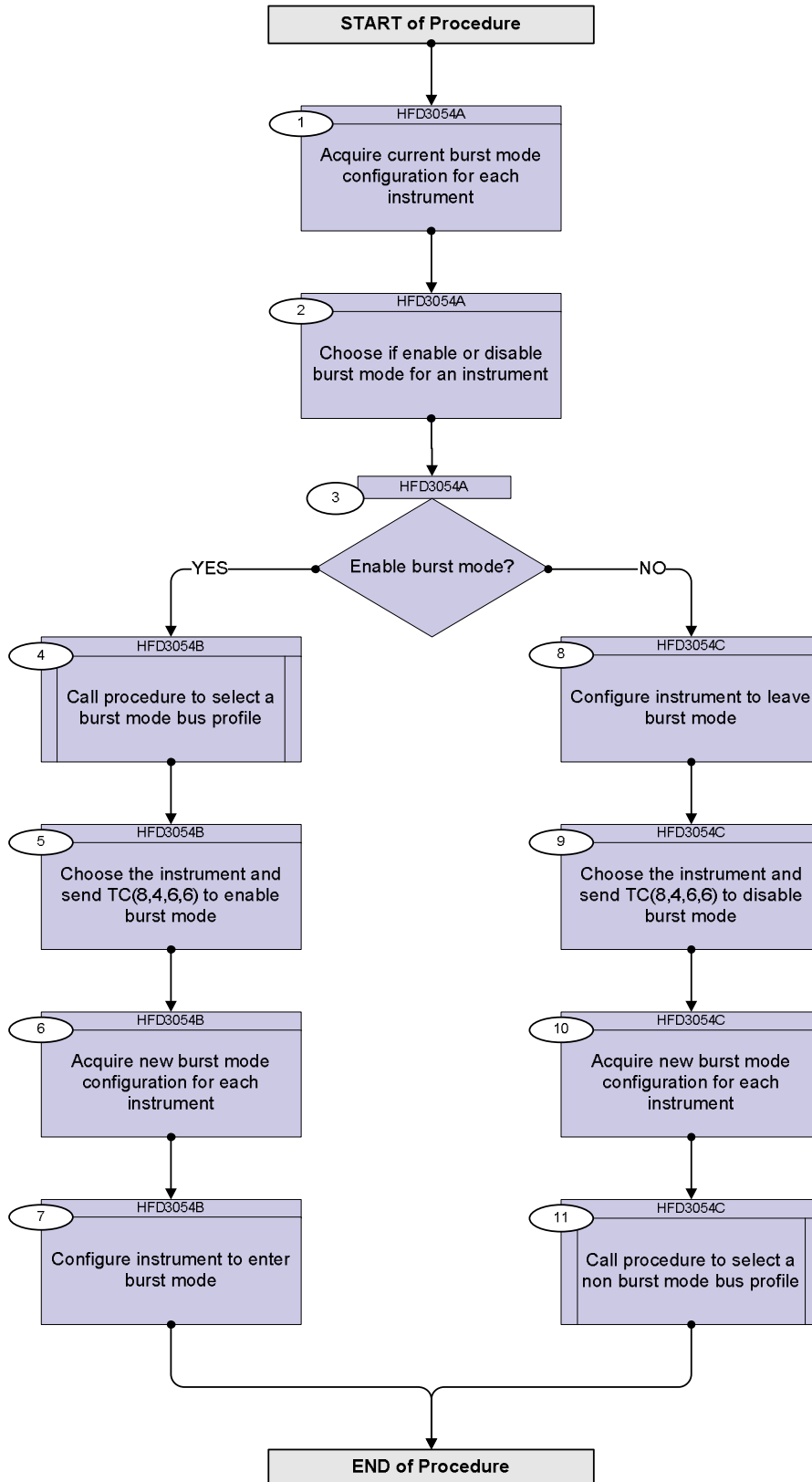
Configuration Control Information

DATE	FOP ISSUE	VERSION	MODIFICATION DESCRIPTION	AUTHOR	SPR REF
06/11/07		1	Created	cmevi-hp	
10/06/08	1	2	TC Flag and Seq Properly changed	S. Manganelli	
01/12/08		3	Checked against TAS-F delivery UM 3.1 Added Formal Parameters	S. Manganelli	
13/01/09	2	4	Updated following OBSW 3_8 and deleted MOIS execution proc calls	S. Manganelli	

Enable or disable burst mode for a remote terminal
 File: H_FCP_DHS_3054.xls
 Author: S. Manganelli



Procedure Flowchart Overview



Enable or disable burst mode for a remote terminal
 File: H_FCP_DHS_3054.xls
 Author: S. Manganelli



Step No.	Time	Activity/Remarks	TC/TLM	Display/ Branch
Beginning of Procedure				
<p><i>TC Seq. Name :HFD3054A (Check burst status)</i></p> <p><i>TimeTag Type:</i> <i>Sub Schedule ID:</i></p> <p style="text-align: center;">□</p>				
1		Acquire current burst mode configuration for each instrument		Next Step: 2
		Verify Telemetry HifiBurstMode DEE02161		AND=ZAZAF999
		Verify Telemetry SpireBurstMode DEE03161		AND=ZAZAF999
		Verify Telemetry PacsBurstMode DEE04161		AND=ZAZAF999
2		Choose if enable or disable burst mode for an instrument		Next Step: 3
3		Enable burst mode?		Next Step: YES 4 NO 8
<p><i>TC Seq. Name :HFD3054B (Enable burst mode)</i></p> <p><i>TimeTag Type: N</i> <i>Sub Schedule ID:</i> <i>Formal Parameter List :</i> RT RT_ID=</p>				
4		Call procedure to select a burst mode bus profile		Next Step: 5
		Execute Procedure H_FCP_DHS_3053 Select a bus profile to be active		
5		Choose the instrument and send TC(8,4,6,6) to enable burst mode		Next Step: 6
		In the TC(8,4,6,6) it is necessary to set, in this case, only the Remote Terminal Identifier (instrument)		
		<u>WARNING:</u> Only one RT can be in burst mode at one time In case another RT was already in burst mode TM(1,2,23) will be received.		

Enable or disable burst mode for a remote terminal
 File: H_FCP_DHS_3054.xls
 Author: S. Manganelli



Step No.	Time	Activity/Remarks	TC/TLM	Display/ Branch
		Execute Telecommand <div style="text-align: right;">ConfRTBurst</div> Command Parameter(s) : <div style="display: flex; justify-content: space-between;"> <div>EOD RT</div> <div>DH009161 DH010161</div> <div>ENABLED RT_ID</div> </div> TC Control Flags : <div style="display: flex; justify-content: space-between;"> <div></div> <div>GBM IL DSE --Y -- ---</div> </div> Subsch. ID : 10 Det. descr. : Configure RT Burst Mode	DC002161	
6		Acquire new burst mode configuration for each instrument		Next Step: 7
		Verify Telemetry <div style="text-align: right;">HifiBurstMode</div>	DEE02161	AND=ZAZAF999
		Verify Telemetry <div style="text-align: right;">SpireBurstMode</div>	DEE03161	AND=ZAZAF999
		Verify Telemetry <div style="text-align: right;">PacsBurstMode</div>	DEE04161	AND=ZAZAF999
7		Configure instrument to enter burst mode		Next Step: END
		Not under SVM responsibility		
TC Seq. Name :HFD3054C (Disable burst mode) TimeTag Type: N Sub Schedule ID: Formal Parameter List : RT RT_ID=				
8		Configure instrument to leave burst mode		Next Step: 9
		Not under SVM responsibility		
9		Choose the instrument and send TC(8,4,6,6) to disable burst mode		Next Step: 10
		In the TC(8,4,6,6) it is necessary to set, in this case, only the Remote Terminal Identifier (instrument)		

Enable or disable burst mode for a remote terminal
 File: H_FCP_DHS_3054.xls
 Author: S. Manganelli



Step No.	Time	Activity/Remarks	TC/TLM	Display/ Branch
		Execute Telecommand <div style="text-align: right;">ConfRTBurst</div> Command Parameter(s) : <div style="display: flex; justify-content: space-between;"> <div>EOD RT</div> <div>DH009161 DH010161</div> <div>DISABLED RT_ID</div> </div> TC Control Flags : <div style="display: flex; justify-content: space-between;"> <div></div> <div>GBM IL DSE --Y -- ---</div> <div></div> </div> Subsch. ID : 10 Det. descr. : Configure RT Burst Mode	DC002161	
10		Acquire new burst mode configuration for each instrument		Next Step: 11
		Verify Telemetry <div style="text-align: right;">HifiBurstMode</div> <div style="text-align: right;">DEE02161</div>		AND=ZAZAF999
		Verify Telemetry <div style="text-align: right;">SpireBurstMode</div> <div style="text-align: right;">DEE03161</div>		AND=ZAZAF999
		Verify Telemetry <div style="text-align: right;">PacsBurstMode</div> <div style="text-align: right;">DEE04161</div>		AND=ZAZAF999
11		Call procedure to select a non burst mode bus profile		Next Step: END
		Execute Procedure H_FCP_DHS_3053 Select a bus profile to be active		
End of Procedure				