

Bus profile maintenance
File: H_FCP_DHS_3052.xls
Author: S. Manganelli



Procedure Summary

Objectives

This procedure describes the steps needed to manage the S/C bus profiles; that is:

- Report BP;
- Copy BP from BP table to BP updating area;
- Update sub-frame of Selected BP;
- Copy BP from BP updating area to BP table.

Summary of Constraints

There are 16 BPs available in the BP table (SGMs).

A new BP can be selected for update only after the BP currently being updated has been copied to the BP table.

Only slots 2 to 23 of the provided sub-frame in the BP present in the BP updating area can be modified.

The last three slots 21, 22 and 23 in the sub-frame have duration of only 150 microseconds; this implies that only short 1553 messages can be sent in those slots.

If longer 1553 messages than 150 microseconds are specified in these slots, there is a risk of overrun in the cyclic list in the PM COCOS ASIC and this will result in a PIM module error trap.

Note that:

- TC(8,4,6,1) and TC(8,4,6,2) will be delayed when a TC(8,4,6,3) is ongoing;
- TC(8,4,6,3) will be delayed when a TC(8,4,6,3) is already ongoing or when a TC(8,4,6,4) is ongoing;
- TC(8,4,6,5) will be delayed when a TC(8,4,6,5) is already ongoing.

Spacecraft Configuration

Start of Procedure

- CDMU in default configuration, that is:
- PM A or B ON (nominally A)
 - TM Encoder/OBT A or B active (nominally A)
 - RM A and B enabled
 - MM A and B ON

End of Procedure

- CDMU in default configuration, that is:
- PM A or B ON (nominally A)
 - TM Encoder/OBT A or B active (nominally A)
 - RM A and B enabled
 - MM A and B ON

Reference File(s)

Input Command Sequences

Output Command Sequences

HFD3052A
HFD3052B

Bus profile maintenance
 File: H_FCP_DHS_3052.xls
 Author: S. Manganelli



Referenced Displays

ANDs GRDs SLDs

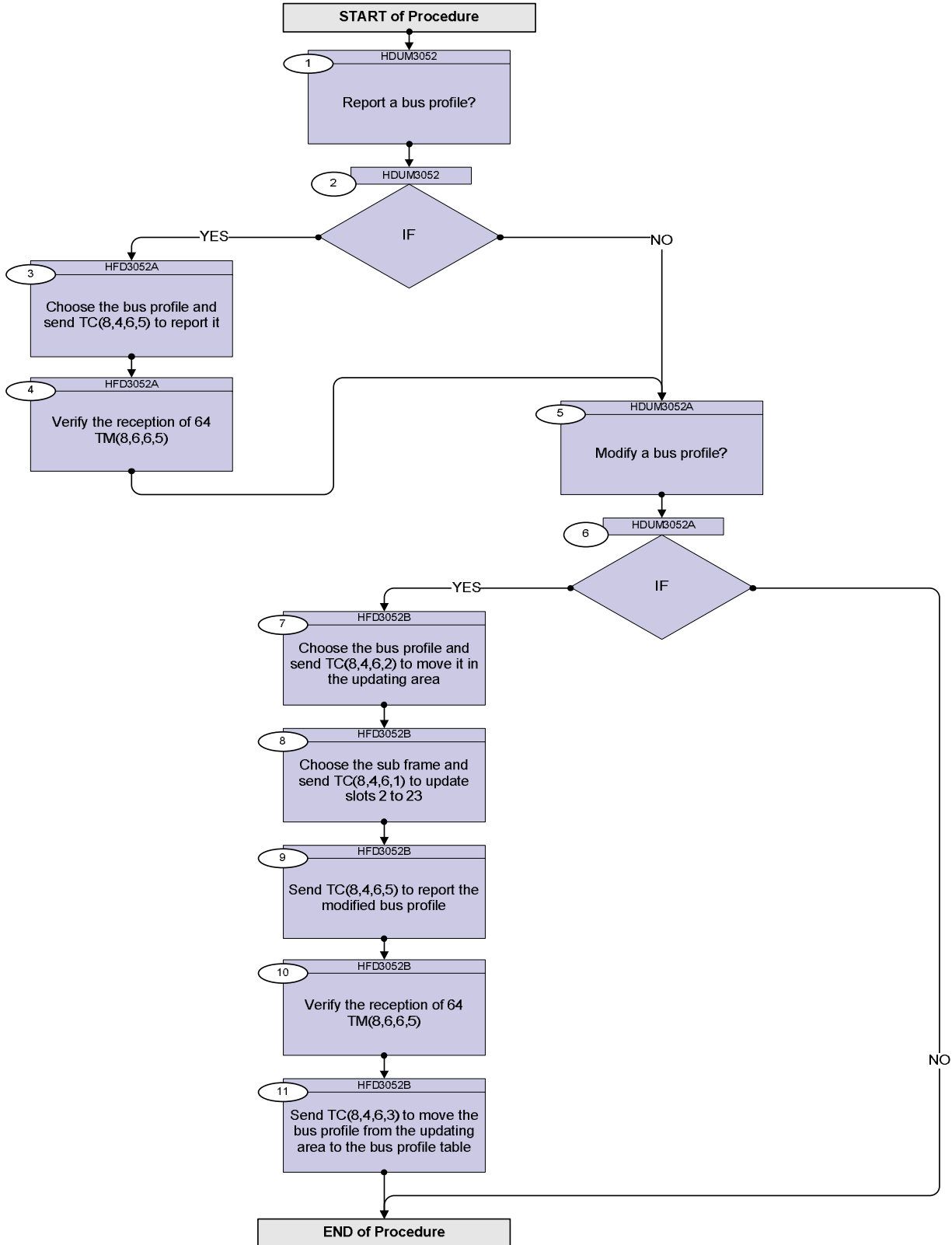
Configuration Control Information

DATE	FOP ISSUE	VERSION	MODIFICATION DESCRIPTION	AUTHOR	SPR REF
06/11/07		1	Created	cmevi-hp	
10/06/08	1	2	TC Flag and Seq Properly changed	S. Manganelli	
01/12/08	2	3	Checked against TASF inputs UM3.1 Modified the formal parameters names Found a problem with some BSW ANDs (still to be corrected)	S. Manganelli	

Bus profile maintenance
 File: H_FCP_DHS_3052.xls
 Author: S. Manganelli



Procedure Flowchart Overview



Bus profile maintenance
 File: H_FCP_DHS_3052.xls
 Author: S. Manganelli



Step No.	Time	Activity/Remarks	TC/TLM	Display/ Branch
Beginning of Procedure				
<p><i>TC Seq. Name : HDUM3052 (Dummy sequence)</i></p> <p><i>TimeTag Type:</i> <i>Sub Schedule ID:</i></p> <p style="text-align: center;">□</p>				
1		Report a bus profile?		Next Step: 2
2		IF		Next Step: YES 3 NO 5
<p><i>TC Seq. Name : HFD3052A (Report bus profile)</i></p> <p><i>TimeTag Type: N</i> <i>Sub Schedule ID:</i> <i>Formal Parameter List :</i> SCBP SCBP_nr=</p>				
3		Choose the bus profile and send TC(8,4,6,5) to report it		Next Step: 4
		This TC will generate 64 TM(8,6,6,5).		
		This TM describes slot 2 to 23 of a single sub-frame of a SCBP.		
		If raw values are used : dec 0..15 = The SCBP in the SCBP table dec 16 = The SCBP in the SCBP updating area dec 65535 = Currently active SCBP		
		Execute Telecommand <div style="text-align: right;">ReportSCBP</div> Command Parameter(s) : <div style="text-align: right;">SCBP DH051160 SCBP_nr</div> TC Control Flags : <div style="text-align: right;">GBM IL DSE --Y -- ---</div> Subsch. ID : 10 Det. descr. : Report SCBP	DC820160	
4		Verify the reception of 64 TM(8,6,6,5)		Next Step: 5

Bus profile maintenance
 File: H_FCP_DHS_3052.xls
 Author: S. Manganelli



Step No.	Time	Activity/Remarks	TC/TLM	Display/ Branch
		Verify Packet Reception Packet Details: <div style="float: right;"> SCBP Report APID: 16 Type: 8 Subtype: 6 PI1: 1541 PI2: 23 </div>	(8,6)-0800	
		Verify Packet Telemetry (Pkt = (8,6)-0800) <div style="text-align: center;">FUN DE001161</div>		
		Verify Packet Telemetry (Pkt = (8,6)-0800) <div style="text-align: center;">ACT DE002161</div>		
		Verify Packet Telemetry (Pkt = (8,6)-0800) <div style="text-align: center;">SID DE003161</div>		
		Verify Packet Telemetry (Pkt = (8,6)-0800) <div style="text-align: center;">FID DE004161</div>		
		Verify Packet Telemetry (Pkt = (8,6)-0800) <div style="text-align: center;">Slot02-P_M DE027161</div>		
		Verify Packet Telemetry (Pkt = (8,6)-0800) <div style="text-align: center;">Slot02-RT DE028161</div>		
		Verify Packet Telemetry (Pkt = (8,6)-0800) <div style="text-align: center;">slot02-SADR DE029161</div>		
		Verify Packet Telemetry (Pkt = (8,6)-0800) <div style="text-align: center;">Slot02-T_R DE030161</div>		(None)
		Verify Packet Telemetry (Pkt = (8,6)-0800) <div style="text-align: center;">Slot03-P_M DE035161</div>		
		Verify Packet Telemetry (Pkt = (8,6)-0800) <div style="text-align: center;">Slot03-RT DE036161</div>		
		Verify Packet Telemetry (Pkt = (8,6)-0800) <div style="text-align: center;">slot03-SADR DE037161</div>		
		Verify Packet Telemetry (Pkt = (8,6)-0800) <div style="text-align: center;">Slot03-T_R DE038161</div>		
		Verify Packet Telemetry (Pkt = (8,6)-0800) <div style="text-align: center;">Slot04-P_M DE045161</div>		
		Verify Packet Telemetry (Pkt = (8,6)-0800) <div style="text-align: center;">Slot04-RT DE046161</div>		
		Verify Packet Telemetry (Pkt = (8,6)-0800) <div style="text-align: center;">Slot04-SADR DE047161</div>		
		Verify Packet Telemetry (Pkt = (8,6)-0800) <div style="text-align: center;">Slot04-T_R DE048161</div>		
		Verify Packet Telemetry (Pkt = (8,6)-0800) <div style="text-align: center;">Slot05-P_M DE055161</div>		

Bus profile maintenance
 File: H_FCP_DHS_3052.xls
 Author: S. Manganelli



Step No.	Time	Activity/Remarks	TC/TLM	Display/ Branch
		Verify Packet Telemetry (Pkt = (8,6)-0800) Slot05-RT DE056161		
		Verify Packet Telemetry (Pkt = (8,6)-0800) Slot05-SADR DE057161		
		Verify Packet Telemetry (Pkt = (8,6)-0800) Slot05-T_R DE058161		
		Verify Packet Telemetry (Pkt = (8,6)-0800) Slot06-P_M DE065161		
		Verify Packet Telemetry (Pkt = (8,6)-0800) Slot06-RT DE066161		
		Verify Packet Telemetry (Pkt = (8,6)-0800) Slot06-SADR DE067161		
		Verify Packet Telemetry (Pkt = (8,6)-0800) Slot06-T_R DE068161		
		Verify Packet Telemetry (Pkt = (8,6)-0800) Slot07-P_M DE075161		
		Verify Packet Telemetry (Pkt = (8,6)-0800) Slot07-RT DE076161		
		Verify Packet Telemetry (Pkt = (8,6)-0800) Slot07-SADR DE077161		
		Verify Packet Telemetry (Pkt = (8,6)-0800) Slot07-T_R DE078161		
		Verify Packet Telemetry (Pkt = (8,6)-0800) Slot08-P_M DE085161		
		Verify Packet Telemetry (Pkt = (8,6)-0800) Slot08-RT DE086161		
		Verify Packet Telemetry (Pkt = (8,6)-0800) Slot08-SADR DE087161		
		Verify Packet Telemetry (Pkt = (8,6)-0800) Slot08-T_R DE088161		
		Verify Packet Telemetry (Pkt = (8,6)-0800) Slot09-P_M DE095161		
		Verify Packet Telemetry (Pkt = (8,6)-0800) Slot09-RT DE096161		
		Verify Packet Telemetry (Pkt = (8,6)-0800) Slot09-SADR DE097161		
		Verify Packet Telemetry (Pkt = (8,6)-0800) Slot09-T_R DE098161		
		Verify Packet Telemetry (Pkt = (8,6)-0800) Slot10-P_M DE105161		

Bus profile maintenance
 File: H_FCP_DHS_3052.xls
 Author: S. Manganelli



Step No.	Time	Activity/Remarks	TC/TLM	Display/ Branch
		Verify Packet Telemetry (Pkt = (8,6)-0800) Slot10-RT DE106161		
		Verify Packet Telemetry (Pkt = (8,6)-0800) Slot10-SADR DE107161		
		Verify Packet Telemetry (Pkt = (8,6)-0800) Slot10-T_R DE108161		
		Verify Packet Telemetry (Pkt = (8,6)-0800) Slot11-P_M DE115161		
		Verify Packet Telemetry (Pkt = (8,6)-0800) Slot11-RT DE116161		
		Verify Packet Telemetry (Pkt = (8,6)-0800) Slot11-SADR DE117161		
		Verify Packet Telemetry (Pkt = (8,6)-0800) Slot11-T_R DE118161		
		Verify Packet Telemetry (Pkt = (8,6)-0800) Slot12-P_M DE125161		
		Verify Packet Telemetry (Pkt = (8,6)-0800) Slot12-RT DE126161		
		Verify Packet Telemetry (Pkt = (8,6)-0800) Slot12-SADR DE127161		
		Verify Packet Telemetry (Pkt = (8,6)-0800) Slot12-T_R DE128161		
		Verify Packet Telemetry (Pkt = (8,6)-0800) Slot13-P_M DE135161		
		Verify Packet Telemetry (Pkt = (8,6)-0800) Slot13-RT DE136161		
		Verify Packet Telemetry (Pkt = (8,6)-0800) Slot13-SADR DE137161		
		Verify Packet Telemetry (Pkt = (8,6)-0800) Slot13-T_R DE138161		
		Verify Packet Telemetry (Pkt = (8,6)-0800) Slot14-P_M DE145161		
		Verify Packet Telemetry (Pkt = (8,6)-0800) Slot14-RT DE146161		
		Verify Packet Telemetry (Pkt = (8,6)-0800) Slot14-SADR DE147161		
		Verify Packet Telemetry (Pkt = (8,6)-0800) Slot14-T_R DE148161		
		Verify Packet Telemetry (Pkt = (8,6)-0800) Slot15-P_M DE155161		

Bus profile maintenance
 File: H_FCP_DHS_3052.xls
 Author: S. Manganelli



Step No.	Time	Activity/Remarks	TC/TLM	Display/ Branch
		Verify Packet Telemetry (Pkt = (8,6)-0800) Slot15-RT DE156161		
		Verify Packet Telemetry (Pkt = (8,6)-0800) Slot15-SADR DE157161		
		Verify Packet Telemetry (Pkt = (8,6)-0800) Slot15-T_R DE158161		
		Verify Packet Telemetry (Pkt = (8,6)-0800) Slot16-P_M DE165161		
		Verify Packet Telemetry (Pkt = (8,6)-0800) Slot16-RT DE166161		
		Verify Packet Telemetry (Pkt = (8,6)-0800) Slot16-SADR DE167161		
		Verify Packet Telemetry (Pkt = (8,6)-0800) Slot16-T_R DE168161		
		Verify Packet Telemetry (Pkt = (8,6)-0800) Slot17-P_M DE175161		
		Verify Packet Telemetry (Pkt = (8,6)-0800) Slot17-RT DE176161		
		Verify Packet Telemetry (Pkt = (8,6)-0800) Slot17-SADR DE177161		
		Verify Packet Telemetry (Pkt = (8,6)-0800) Slot17-T_R DE178161		
		Verify Packet Telemetry (Pkt = (8,6)-0800) Slot18-P_M DE185161		
		Verify Packet Telemetry (Pkt = (8,6)-0800) Slot18-RT DE186161		
		Verify Packet Telemetry (Pkt = (8,6)-0800) Slot18-SADR DE187161		
		Verify Packet Telemetry (Pkt = (8,6)-0800) Slot18-T_R DE188161		
		Verify Packet Telemetry (Pkt = (8,6)-0800) Slot19-P_M DE195161		
		Verify Packet Telemetry (Pkt = (8,6)-0800) Slot19-RT DE196161		
		Verify Packet Telemetry (Pkt = (8,6)-0800) Slot19-SADR DE197161		
		Verify Packet Telemetry (Pkt = (8,6)-0800) Slot19-T_R DE198161		
		Verify Packet Telemetry (Pkt = (8,6)-0800) Slot20-P_M DE205161		

Bus profile maintenance
 File: H_FCP_DHS_3052.xls
 Author: S. Manganelli



Step No.	Time	Activity/Remarks	TC/TLM	Display/ Branch
		Verify Packet Telemetry (Pkt = (8,6)-0800) Slot20-RT DE206161		
		Verify Packet Telemetry (Pkt = (8,6)-0800) Slot20-SADR DE207161		
		Verify Packet Telemetry (Pkt = (8,6)-0800) Slot20-T_R DE208161		
		Verify Packet Telemetry (Pkt = (8,6)-0800) Slot21-P_M DE215161		
		Verify Packet Telemetry (Pkt = (8,6)-0800) Slot21-RT DE216161		
		Verify Packet Telemetry (Pkt = (8,6)-0800) Slot21-SADR DE217161		
		Verify Packet Telemetry (Pkt = (8,6)-0800) Slot21-T_R DE218161		
		Verify Packet Telemetry (Pkt = (8,6)-0800) Slot22-P_M DE225161		
		Verify Packet Telemetry (Pkt = (8,6)-0800) Slot22-RT DE226161		
		Verify Packet Telemetry (Pkt = (8,6)-0800) Slot22-SADR DE227161		
		Verify Packet Telemetry (Pkt = (8,6)-0800) Slot22-T_R DE228161		
		Verify Packet Telemetry (Pkt = (8,6)-0800) Slot23-P_M DE235161		
		Verify Packet Telemetry (Pkt = (8,6)-0800) Slot23-RT DE236161		
		Verify Packet Telemetry (Pkt = (8,6)-0800) Slot23-SADR DE237161		
		Verify Packet Telemetry (Pkt = (8,6)-0800) Slot23-T_R DE238161		
<p><i>TC Seq. Name :HDUM3052A (Dummy sequence)</i></p> <p><i>TimeTag Type:</i> <i>Sub Schedule ID:</i></p> <p><input type="checkbox"/></p>				
5		Modify a bus profile?		Next Step: 6

Bus profile maintenance
 File: H_FCP_DHS_3052.xls
 Author: S. Manganelli



Step No.	Time	Activity/Remarks	TC/TLM	Display/ Branch
6		IF		Next Step: YES 7 NO END
<p>TC Seq. Name :HFD3052B (Modify bus profile)</p> <p>TimeTag Type: N Sub Schedule ID: <input type="checkbox"/> Formal Parameter List : SCBP BaseSCBP= SCBP New_SCBP=</p>				
7		Choose the bus profile and send TC(8,4,6,2) to move it in the updating area		Next Step: 8
		<p>This TC will copy the selected SCBP from the SCBP table to the SCBP updating area.</p> <p>A new SCBP can be selected for update only after the SCBP currently being updated has been copied to the SCBP table.</p>		
		<p>Execute Telecommand</p> <p style="text-align: center;">CopySCBPTableUpdate</p> <p>Command Parameter(s) :</p> <p style="text-align: center;">SCBP DH049160 BaseSCBP</p> <p>TC Control Flags :</p> <p style="text-align: center;">GBM IL DSE ---Y --- ---</p> <p>Subsch. ID : 10 Det. descr. : Copy SCBP from SCBP Table to SCBP Updating Area</p>	<p>DC817160</p> <p>BaseSCBP</p>	
8		Choose the sub frame and send TC(8,4,6,1) to update slots 2 to 23		Next Step: 9
		Note that if it is necessary to modify N sub frame this TC must be sent N times.		
		<p>This TC will update slots 2 to 23 of the provided sub-frame in the SCBP present in the SCBP updating area.</p> <p>Slot 1 (subframe synchronization) and slot 24 (regulation slot) are not modifiable.</p> <p>In the TC(8,4,6,1) it is necessary to set the <u>Sub frame Identifier</u> (from 1 to 64) and the following parameters for each slot:</p> <p>- Packet or Message: 0 = message slot is part of a packet transfer 1 = message slot is part of a self standing message</p>		

Bus profile maintenance
 File: H_FCP_DHS_3052.xls
 Author: S. Manganelli



Step No.	Time	Activity/Remarks	TC/TLM	Display/ Branch
		RT DH006161 SADR DH007161 T_R DH008161 TC Control Flags : GBM IL DSE --Y -- --- Subsch. ID : 10 Det. descr. : Update Sub-frame of Selected SCBP This Telecommand will not be included in the export	0 <dec> 32 <dec> 0 <dec>	
9		Send TC(8,4,6,5) to report the modified bus profile		Next Step: 10
		This TC will generate 64 TM(8,6,6,5). This TM describes slot 2 to 23 of a single sub-frame of a SCBP.		
		Execute Telecommand ReportSCBP Command Parameter(s) : SCBP DH051160 TC Control Flags : GBM IL DSE --Y -- --- Subsch. ID : 10 Det. descr. : Report SCBP	DC820160 Updating Area	
10		Verify the reception of 64 TM(8,6,6,5)		Next Step: 11
		Verify Packet Reception Packet Details: SCBP Report (8,6)-0800 APID: 16 Type: 8 Subtype: 6 PI1: 1541 PI2: 23		
		Verify Packet Telemetry (Pkt = (8,6)-0800) FUN DE001161		
		Verify Packet Telemetry (Pkt = (8,6)-0800) ACT DE002161		
		Verify Packet Telemetry (Pkt = (8,6)-0800) SID DE003161		
		Verify Packet Telemetry (Pkt = (8,6)-0800) FID DE004161		
		Verify Packet Telemetry (Pkt = (8,6)-0800) Slot02-P_M DE027161		
		Verify Packet Telemetry (Pkt = (8,6)-0800) Slot02-RT DE028161		

Bus profile maintenance
 File: H_FCP_DHS_3052.xls
 Author: S. Manganelli



Step No.	Time	Activity/Remarks	TC/TLM	Display/ Branch
		Verify Packet Telemetry (Pkt = (8,6)-0800) Slot02-SADR DE029161		
		Verify Packet Telemetry (Pkt = (8,6)-0800) Slot02-T_R DE030161		
		Verify Packet Telemetry (Pkt = (8,6)-0800) Slot03-P_M DE035161		
		Verify Packet Telemetry (Pkt = (8,6)-0800) Slot03-RT DE036161		
		Verify Packet Telemetry (Pkt = (8,6)-0800) Slot03-SADR DE037161		
		Verify Packet Telemetry (Pkt = (8,6)-0800) Slot03-T_R DE038161		
		Verify Packet Telemetry (Pkt = (8,6)-0800) Slot04-P_M DE045161		
		Verify Packet Telemetry (Pkt = (8,6)-0800) Slot04-RT DE046161		
		Verify Packet Telemetry (Pkt = (8,6)-0800) Slot04-SADR DE047161		
		Verify Packet Telemetry (Pkt = (8,6)-0800) Slot04-T_R DE048161		
		Verify Packet Telemetry (Pkt = (8,6)-0800) Slot05-P_M DE055161		
		Verify Packet Telemetry (Pkt = (8,6)-0800) Slot05-RT DE056161		
		Verify Packet Telemetry (Pkt = (8,6)-0800) Slot05-SADR DE057161		
		Verify Packet Telemetry (Pkt = (8,6)-0800) Slot05-T_R DE058161		
		Verify Packet Telemetry (Pkt = (8,6)-0800) Slot06-P_M DE065161		
		Verify Packet Telemetry (Pkt = (8,6)-0800) Slot06-RT DE066161		
		Verify Packet Telemetry (Pkt = (8,6)-0800) Slot06-SADR DE067161		
		Verify Packet Telemetry (Pkt = (8,6)-0800) Slot06-T_R DE068161		
		Verify Packet Telemetry (Pkt = (8,6)-0800) Slot07-P_M DE075161		
		Verify Packet Telemetry (Pkt = (8,6)-0800) Slot07-RT DE076161		

Bus profile maintenance
 File: H_FCP_DHS_3052.xls
 Author: S. Manganelli



Step No.	Time	Activity/Remarks	TC/TLM	Display/ Branch
		Verify Packet Telemetry (Pkt = (8,6)-0800) Slot07-SADR DE077161		
		Verify Packet Telemetry (Pkt = (8,6)-0800) Slot07-T_R DE078161		
		Verify Packet Telemetry (Pkt = (8,6)-0800) Slot08-P_M DE085161		
		Verify Packet Telemetry (Pkt = (8,6)-0800) Slot08-RT DE086161		
		Verify Packet Telemetry (Pkt = (8,6)-0800) Slot08-SADR DE087161		
		Verify Packet Telemetry (Pkt = (8,6)-0800) Slot08-T_R DE088161		
		Verify Packet Telemetry (Pkt = (8,6)-0800) Slot09-P_M DE095161		
		Verify Packet Telemetry (Pkt = (8,6)-0800) Slot09-RT DE096161		
		Verify Packet Telemetry (Pkt = (8,6)-0800) Slot09-SADR DE097161		
		Verify Packet Telemetry (Pkt = (8,6)-0800) Slot09-T_R DE098161		
		Verify Packet Telemetry (Pkt = (8,6)-0800) Slot10-P_M DE105161		
		Verify Packet Telemetry (Pkt = (8,6)-0800) Slot10-RT DE106161		
		Verify Packet Telemetry (Pkt = (8,6)-0800) Slot10-SADR DE107161		
		Verify Packet Telemetry (Pkt = (8,6)-0800) Slot10-T_R DE108161		
		Verify Packet Telemetry (Pkt = (8,6)-0800) Slot11-P_M DE115161		
		Verify Packet Telemetry (Pkt = (8,6)-0800) Slot11-RT DE116161		
		Verify Packet Telemetry (Pkt = (8,6)-0800) Slot11-SADR DE117161		
		Verify Packet Telemetry (Pkt = (8,6)-0800) Slot11-T_R DE118161		
		Verify Packet Telemetry (Pkt = (8,6)-0800) Slot12-P_M DE125161		
		Verify Packet Telemetry (Pkt = (8,6)-0800) Slot12-RT DE126161		

Bus profile maintenance
 File: H_FCP_DHS_3052.xls
 Author: S. Manganelli



Step No.	Time	Activity/Remarks	TC/TLM	Display/ Branch
		Verify Packet Telemetry (Pkt = (8,6)-0800) Slot12-SADR DE127161		
		Verify Packet Telemetry (Pkt = (8,6)-0800) Slot12-T_R DE128161		
		Verify Packet Telemetry (Pkt = (8,6)-0800) Slot13-P_M DE135161		
		Verify Packet Telemetry (Pkt = (8,6)-0800) Slot13-RT DE136161		
		Verify Packet Telemetry (Pkt = (8,6)-0800) Slot13-SADR DE137161		
		Verify Packet Telemetry (Pkt = (8,6)-0800) Slot13-T_R DE138161		
		Verify Packet Telemetry (Pkt = (8,6)-0800) Slot14-P_M DE145161		
		Verify Packet Telemetry (Pkt = (8,6)-0800) Slot14-RT DE146161		
		Verify Packet Telemetry (Pkt = (8,6)-0800) Slot14-SADR DE147161		
		Verify Packet Telemetry (Pkt = (8,6)-0800) Slot14-T_R DE148161		
		Verify Packet Telemetry (Pkt = (8,6)-0800) Slot15-P_M DE155161		
		Verify Packet Telemetry (Pkt = (8,6)-0800) Slot15-RT DE156161		
		Verify Packet Telemetry (Pkt = (8,6)-0800) Slot15-SADR DE157161		
		Verify Packet Telemetry (Pkt = (8,6)-0800) Slot15-T_R DE158161		
		Verify Packet Telemetry (Pkt = (8,6)-0800) Slot16-P_M DE165161		
		Verify Packet Telemetry (Pkt = (8,6)-0800) Slot16-RT DE166161		
		Verify Packet Telemetry (Pkt = (8,6)-0800) Slot16-SADR DE167161		
		Verify Packet Telemetry (Pkt = (8,6)-0800) Slot16-T_R DE168161		
		Verify Packet Telemetry (Pkt = (8,6)-0800) Slot17-P_M DE175161		
		Verify Packet Telemetry (Pkt = (8,6)-0800) Slot17-RT DE176161		

Bus profile maintenance
 File: H_FCP_DHS_3052.xls
 Author: S. Manganelli



Step No.	Time	Activity/Remarks	TC/TLM	Display/ Branch
		Verify Packet Telemetry (Pkt = (8,6)-0800) Slot17-SADR DE177161		
		Verify Packet Telemetry (Pkt = (8,6)-0800) Slot17-T_R DE178161		
		Verify Packet Telemetry (Pkt = (8,6)-0800) Slot18-P_M DE185161		
		Verify Packet Telemetry (Pkt = (8,6)-0800) Slot18-RT DE186161		
		Verify Packet Telemetry (Pkt = (8,6)-0800) Slot18-SADR DE187161		
		Verify Packet Telemetry (Pkt = (8,6)-0800) Slot18-T_R DE188161		
		Verify Packet Telemetry (Pkt = (8,6)-0800) Slot19-P_M DE195161		
		Verify Packet Telemetry (Pkt = (8,6)-0800) Slot19-RT DE196161		
		Verify Packet Telemetry (Pkt = (8,6)-0800) Slot19-SADR DE197161		
		Verify Packet Telemetry (Pkt = (8,6)-0800) Slot19-T_R DE198161		
		Verify Packet Telemetry (Pkt = (8,6)-0800) Slot20-P_M DE205161		
		Verify Packet Telemetry (Pkt = (8,6)-0800) Slot20-RT DE206161		
		Verify Packet Telemetry (Pkt = (8,6)-0800) Slot20-SADR DE207161		
		Verify Packet Telemetry (Pkt = (8,6)-0800) Slot20-T_R DE208161		
		Verify Packet Telemetry (Pkt = (8,6)-0800) Slot21-P_M DE215161		
		Verify Packet Telemetry (Pkt = (8,6)-0800) Slot21-RT DE216161		
		Verify Packet Telemetry (Pkt = (8,6)-0800) Slot21-SADR DE217161		
		Verify Packet Telemetry (Pkt = (8,6)-0800) Slot21-T_R DE218161		
		Verify Packet Telemetry (Pkt = (8,6)-0800) Slot22-P_M DE225161		
		Verify Packet Telemetry (Pkt = (8,6)-0800) Slot22-RT DE226161		

