

Start or stop an OBCP  
File: H\_FCP\_DHS\_3042.xls  
Author: S. Manganelli



## Procedure Summary

### Objectives

The ASW function "OBCP Management" is responsible of executing the loaded Procedures.

This procedure describes the steps needed to start the execution of an OBCP or to stop the execution of a running OBCP.

### Summary of Constraints

Default status of "OBCP Management" function: "Stopped".

When the function is stopped, it does not accept any other telecommands than the:

- Start Function TC(8,1,107);
- Report Function Status TC(8,5,107).

Thus, if the function is stopped this procedure cannot be executed.

### Spacecraft Configuration

#### Start of Procedure

- CDMU in default configuration, that is:
- PM A or B ON (nominally A)
  - TM Encoder/OBT A or B active (nominally A)
  - RM A and B enabled
  - MM A and B ON

#### End of Procedure

- CDMU in default configuration, that is:
- PM A or B ON (nominally A)
  - TM Encoder/OBT A or B active (nominally A)
  - RM A and B enabled
  - MM A and B ON

### Reference File(s)

#### Input Command Sequences

#### Output Command Sequences

HFD3042A  
HFD3042B  
HFD3042E  
HFD3042C  
HFD3042D

### Referenced Displays

ANDs	GRDs	SLDs
ZAZAI999		(None)
ZAD08999		

Start or stop an OBCP  
 File: H\_FCP\_DHS\_3042.xls  
 Author: S. Manganelli



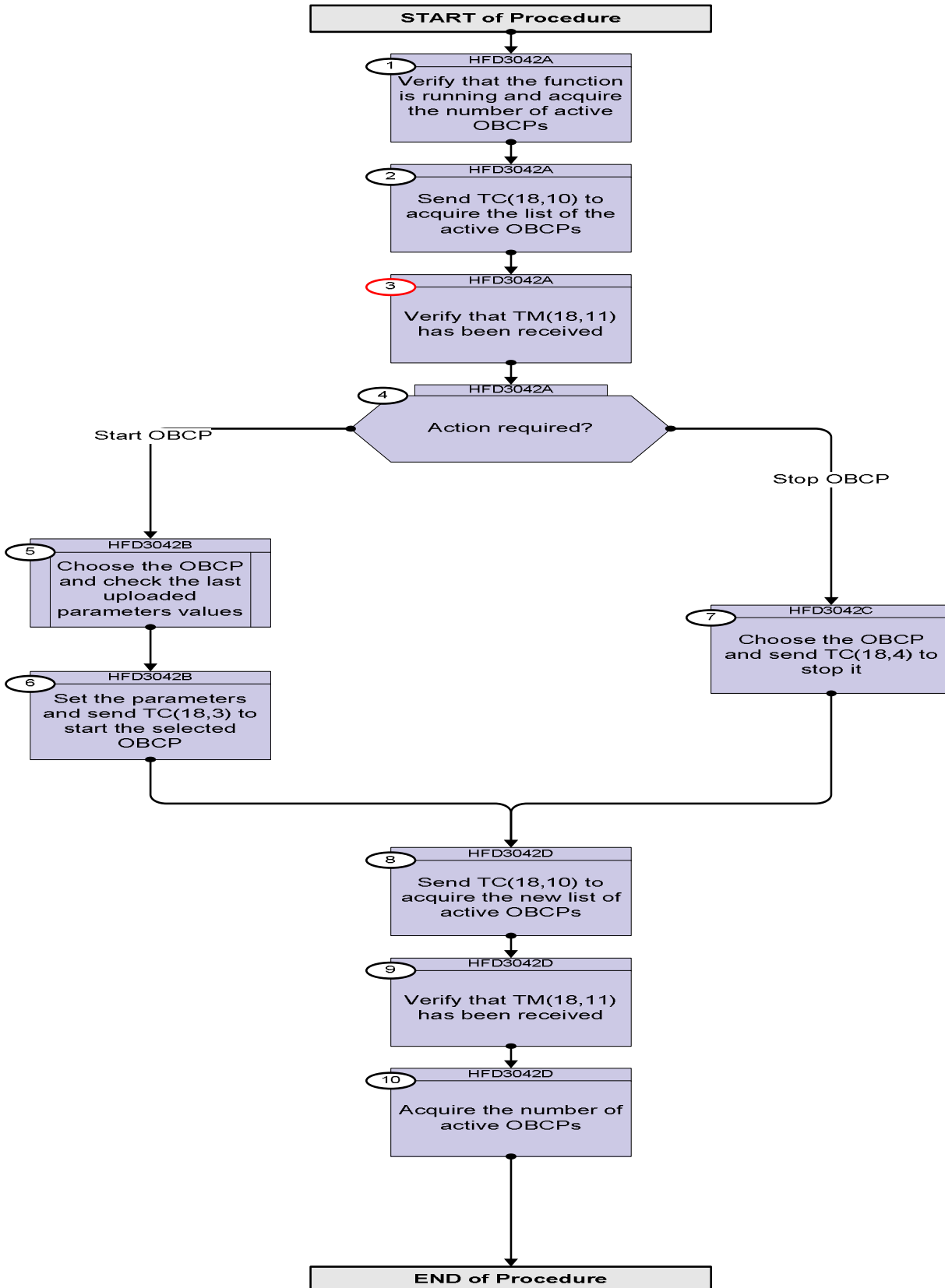
**Configuration Control Information**

DATE	FOP ISSUE	VERSION	MODIFICATION DESCRIPTION	AUTHOR	SPR REF
02/11/07		1	Created	cmevi-hp	
10/06/08	1	2	TC Flag and Seq Properly changed	S. Manganelli	
28/11/08		3	Procedure updated according to latest version received from industry on 29/09/2008	cmevi-hp	
20/01/09	2	4	Updated adding switch for stopping one or all OBCPs following TAS inputs	S. Manganelli	
15/03/09	2.2	5	Fixed MOIS FP bug	S. Manganelli	

Start or stop an OBCP  
 File: H\_FCP\_DHS\_3042.xls  
 Author: S. Manganelli



**Procedure Flowchart Overview**





Start or stop an OBCP  
 File: H\_FCP\_DHS\_3042.xls  
 Author: S. Manganelli



Step No.	Time	Activity/Remarks	TC/TLM	Display/ Branch
4		Action required?		Next Step: Start OBCP 5 Stop ALL OBCP 7 STOP ONE OBCP 8
<p>TC Seq. Name :HFD3042B (Start OBCP)</p> <p>TimeTag Type: Sub Schedule ID:  <input type="checkbox"/></p>				
5		Choose the OBCP and check the last uploaded parameters values		Next Step: 6
5.1		Check the current status and parameter values		<input type="checkbox"/>
		<b>The procedure status shall be stopped.</b>		
		<b>Execute procedure H_FCP_DHS_3045.</b>		
6		Set the parameters and send TC(18,3) to start the selected OBCP		Next Step: 9
		<b><u>WARNING: the following TC is a variable length TC which does not allow the definition of a generic procedure. The following is therefore only an example.</u></b>		
		<p><b>In the TC(18,3) it is necessary to set the following parameters:</b></p> <p><b><u>Procedure-ID:</u></b> the unique identification of the On-Board Control Procedure that is started.</p> <p><b><u>N1:</u></b> the number of couplets of OBCP parameter identifiers (OBCP-PID) and 32-bit long OBCP parameter values which follow (maximum value 38). If N1 = zero, no 32-bit long OBCP parameter is sent together with the Start-Telecommand.</p> <p><b><u>Repeated N1 time:</u></b>  <b><u>OBCP-PID:</u></b> the identification of the parameter whose value follows.</p> <p><b><u>Value:</u></b> the 32 bits value of the corresponding parameter</p>		

Start or stop an OBCP  
 File: H\_FCP\_DHS\_3042.xls  
 Author: S. Manganelli



Step No.	Time	Activity/Remarks	TC/TLM	Display/ Branch
		<p><b>N2:</b> the number of couplets of OBCP parameter identifiers (OBCP-PID) and 64-bit long OBCP parameter values which follow (maximum value 23). If N2=0, no 64-bit long OBCP parameter is sent together with the Start-Telecommand.</p> <p><b>Repeated N2 time:</b>  <b>OBCP-PID:</b> the identification of the parameter whose value follows.  <b>Value:</b> the 64 bits value of the corresponding parameter</p>		
		<p>When this request is received, the specified on-board procedure is started using (or passing) the specified activation parameters. The procedure status is then «active». The parameters are used to configure the specific instance of execution of an on-board procedure.</p> <p>The request is ignored if the status of the procedure was "active" or "suspended".</p>		
		<p><b>WARNING: the following TC is intended to be just an example.</b></p> <p>It illustrates the case of starting a procedure requiring no parameters neither of 32 bits or 64 bits.</p>		
		<pre>Execute Telecommand                                      StartObcp Command Parameter(s) :       ObcpId           DH135170       NParam32         DH138170       NParam64         DH142170 TC Control Flags :                                      GBM IL DSE                                      --Y -- --- Subsch. ID : 10 Det. descr. : TEMPLATE Start OBCP TC(18,3) This Telecommand will not be included in the export</pre>	<p>DCT71170</p> <p>OBCP_ID  0 &lt;dec&gt;  0 &lt;dec&gt;</p>	



Start or stop an OBCP  
 File: H\_FCP\_DHS\_3042.xls  
 Author: S. Manganelli



Step No.	Time	Activity/Remarks	TC/TLM	Display/ Branch
		<p><b>When this request is received, the specified on-board procedure is stopped. The procedure status is then "stopped".</b></p> <p><b>The request is ignored if the procedure already has the "stopped" status.</b></p>		
8.1		Stop a specific on board procedure		<input type="checkbox"/>
8.1.1		Choose ObcpId		<input type="checkbox"/>
8.1.2		Stop selected on board procedure		<input type="checkbox"/>
		Execute Telecommand <div style="text-align: right;"><b>StopObcp</b></div> Command Parameter(s) : <div style="text-align: right;">ObcpId                   DH135170</div> TC Control Flags : <div style="text-align: right;">GBM IL DSE --Y -- ---</div> Subsch. ID : 10 Det. descr. : TEMPLATE Stop OBCP TC(18,4)	DCT72170  OBCP_ID	
TC Seq. Name :HFD3042D (Get Active OBCP list)  TimeTag Type: Sub Schedule ID:  <input type="checkbox"/>				
9		Send TC(18,10) to acquire the new list of active OBCPs		Next Step: 10
		<p><b>When this request is received, a report Type (18,11) is generated.</b></p>		
		Execute Telecommand <div style="text-align: right;"><b>ReptActiveObcps</b></div> TC Control Flags : <div style="text-align: right;">GBM IL DSE --Y -- ---</div> Subsch. ID : 10 Det. descr. : TEMPLATE Report list of Active OBCPs TC(18,10)	DCT77170	
10		Verify that TM(18,11) has been received		Next Step: 11



