

Enable or disable storage in a MM packet store
 File: H_FCP_DHS_3035.xls
 Author: S. Manganelli



Procedure Summary

Objectives

This procedure describes the steps needed to enable or disable the storage in packet store.

Summary of Constraints

TC(15,2) "Disable Storage in Packet Stores" is rejected for the CEL (Critical Event Log); the storage in CEL will be blocked (disabled) until space have been freed by deleting old data (using TC(15,11) "Delete Packet Stores Contents") and the packet store is enabled by TC(15,1) "Enable Storage in Packet Stores".

Note that TC(15,1) and TC(15,2) will fail when there is an ongoing TC(8,4,2,3) (Check Mass Memory), TC(8,4,2,4) (Map Mass Memory), TC(8,4,2,5) (Turn Bank on/off) or TC(8,4,2,6).

Spacecraft Configuration

Start of Procedure

CDMU in default configuration, that is:

- PM A or B ON (nominally A)
- TM Encoder/OBT A or B active (nominally A)
- RM A and B enabled
- MM A and B ON

End of Procedure

CDMU in default configuration, that is:

- PM A or B ON (nominally A)
- TM Encoder/OBT A or B active (nominally A)
- RM A and B enabled
- MM A and B ON

Reference File(s)

Input Command Sequences

Output Command Sequences

HFD3035A
 HFD3035B

Referenced Displays

ANDs GRDs SLDs
 (None)

Configuration Control Information

DATE	FOP ISSUE	VERSION	MODIFICATION DESCRIPTION	AUTHOR	SPR REF
12/11/07		1	Created	cmevi-hp	
10/06/08	1	2	TC flag and seq property changed	S. Manganelli	
09/12/08		3	DB check against OBSW 3_6_2	S. Manganelli	

Status : Version 4 - Unchanged
 Last Checkin: 13/01/09

Enable or disable storage in a MM packet store
File: H_FCP_DHS_3035.xls
Author: S. Manganelli

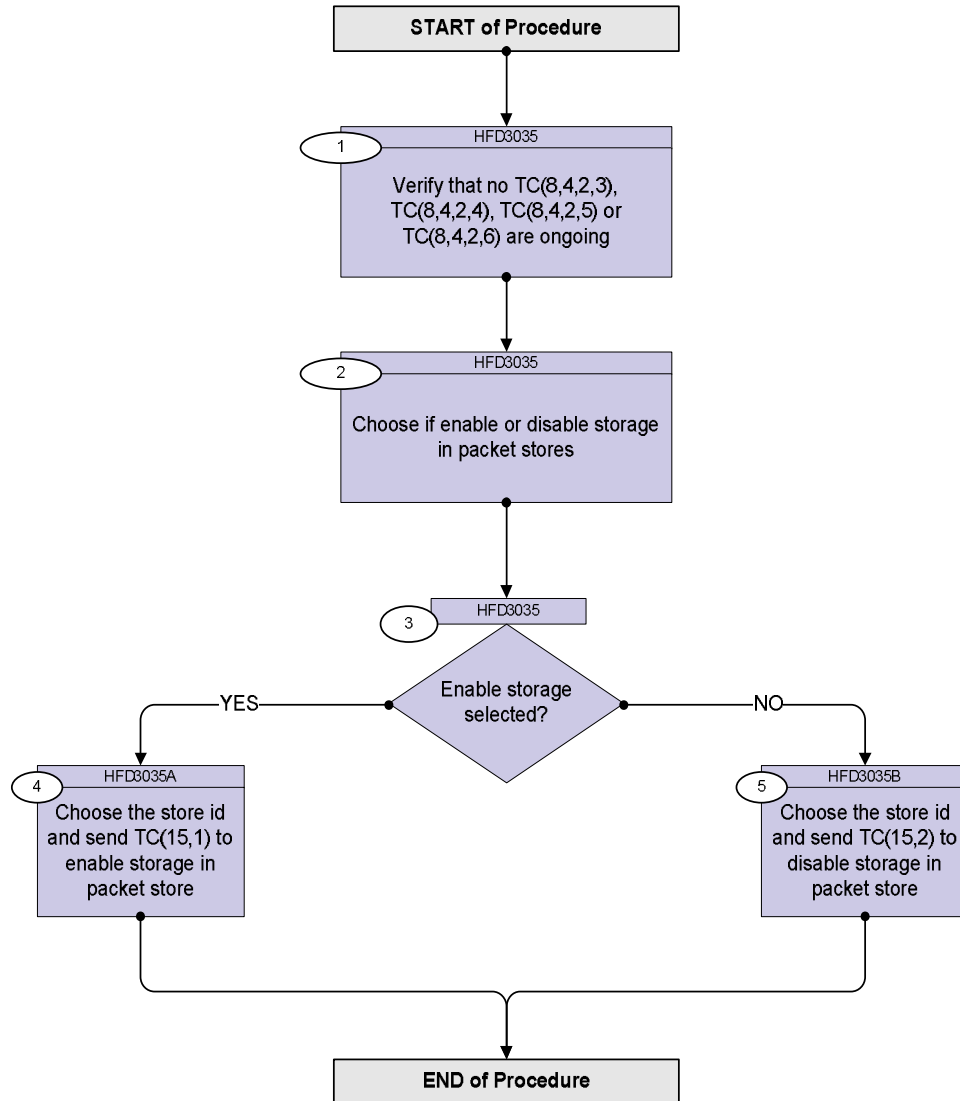


13/01/09	2	4	Updated following OBSW 3_8	S. Manganelli	
----------	---	---	----------------------------	---------------	--

Enable or disable storage in a MM packet store
File: H_FCP_DHS_3035.xls
Author: S. Manganelli



Procedure Flowchart Overview



Enable or disable storage in a MM packet store
 File: H_FCP_DHS_3035.xls
 Author: S. Manganelli



Step No.	Time	Activity/Remarks	TC/TLM	Display/ Branch
Beginning of Procedure				
TC Seq. Name :HFD3035 (Verify) TimeTag Type: Sub Schedule ID: <input type="checkbox"/>				
1		Verify that no TC(8,4,2,3), TC(8,4,2,4), TC(8,4,2,5) or TC(8,4,2,6) are ongoing		Next Step: 2
		Verify Telemetry TC_8-4-2-3_x DEE0J161 = FALSE		(None)
		Verify Telemetry TC_8-4-2-4_x DEE0K161 = FALSE		(None)
		Verify Telemetry TC_8-4-2-5_x DEE0L161 = FALSE		(None)
		Verify Telemetry TC_8-4-2-6_x DEE0M161 = FALSE		(None)
2		Choose if enable or disable storage in packet stores		Next Step: 3
3		Enable storage selected?		Next Step: NO 5 YES 4
TC Seq. Name :HFD3035A (Enable storage) TimeTag Type: Sub Schedule ID: <input type="checkbox"/>				
4		Choose the store id and send TC(15,1) to enable storage in packet store		Next Step: END
		<p>When the CDMS receives this request, it starts sending the relevant packets to the specified Packet Stores.</p> <p>In the TC(15,1) it is necessary to set the following parameters:</p> <p>N: number of packet stores to be controlled. N=0 means all Packet Stores; in this case all Packet Stores shall be enabled according to their last, or default assignment to a Store Type.</p> <p>Store-ID: the identifier of the Packet Store, repeated N times.</p>		

Enable or disable storage in a MM packet store
 File: H_FCP_DHS_3035.xls
 Author: S. Manganelli



Step No.	Time	Activity/Remarks	TC/TLM	Display/ Branch								
		<u>WARNING: only one of the following TCs must be sent.</u>										
		<u>WARNING: the following TC has to be sent to enable storage in packet stores; it is a variable length TC that MOIS cannot handle and it is intended to be just an example.</u>										
		Execute Telecommand <p style="text-align: right;">EnStoragePktStore</p> Command Parameter(s) : <table style="margin-left: 40px;"> <tr> <td style="text-align: right;">N</td> <td>DH002160</td> </tr> <tr> <td style="text-align: right;">Store_Id</td> <td>DH003160</td> </tr> </table> TC Control Flags : <table style="margin-left: 40px;"> <tr> <td></td> <td style="text-align: right;">GBM IL DSE</td> </tr> <tr> <td></td> <td style="text-align: right;">--Y -- ---</td> </tr> </table> Subsch. ID : 10 Det. descr. : Enable Storage in Packet Stores This Telecommand will not be included in the export	N	DH002160	Store_Id	DH003160		GBM IL DSE		--Y -- ---	DC150160 1 <dec> (Def) 15 <dec>	
N	DH002160											
Store_Id	DH003160											
	GBM IL DSE											
	--Y -- ---											
		<u>WARNING: the following TC has to be sent to enable storage in all packet stores.</u>										
		Execute Telecommand <p style="text-align: right;">EnStorageAllPktStore</p> TC Control Flags : <table style="margin-left: 40px;"> <tr> <td></td> <td style="text-align: right;">GBM IL DSE</td> </tr> <tr> <td></td> <td style="text-align: right;">--Y -- ---</td> </tr> </table> Subsch. ID : 10 Det. descr. : Enable Storage in All Packet Stores This Telecommand will not be included in the export		GBM IL DSE		--Y -- ---	DC151160					
	GBM IL DSE											
	--Y -- ---											
TC Seq. Name :HFD3035B (Disable storage) TimeTag Type: Sub Schedule ID: <input type="checkbox"/>												
5		Choose the store id and send TC(15,2) to disable storage in packet store		Next Step: END								
		When the CDMS receives this request, it stops sending the relevant packets to the specified Packet Stores. In the TC(15,2) it is necessary to set the following parameters: N: number of packet stores to be controlled. N=0 means all Packet Stores; in this case all Packet Stores shall be disabled according to their last, or default assignment to a Store Type. Store-ID: the identifier of the Packet Store, repeated N times.										
		<u>WARNING: only one of the following TCs must be sent.</u>										

Enable or disable storage in a MM packet store
 File: H_FCP_DHS_3035.xls
 Author: S. Manganelli



Step No.	Time	Activity/Remarks	TC/TLM	Display/ Branch
		WARNING: the following TC has to be sent to disable storage in packet stores; it is a variable lenght TC that MOIS cannot handle and it is intended to be just an example.		
		Execute Telecommand <p style="text-align: right;">DisableStoragePktStore</p> Command Parameter(s) : <p style="text-align: right;">N DH002160</p> <p style="text-align: right;">Store_Id DH003160</p> TC Control Flags : <p style="text-align: right;">GBM IL DSE</p> <p style="text-align: right;">--Y -- ---</p> Subsch. ID : 10 Det. descr. : Disable Storage in Packet Stores This Telecommand will not be included in the export	DC152160	
		WARNING: the following TC has to be sent to disable storage in all packet stores.		
		Execute Telecommand <p style="text-align: right;">DisableStorageAllPktSt</p> TC Control Flags : <p style="text-align: right;">GBM IL DSE</p> <p style="text-align: right;">--Y -- ---</p> Subsch. ID : 10 Det. descr. : Disable Storage in All Packet Stores This Telecommand will not be included in the export	DC153160	
End of Procedure				