

Report ASW event filter function and settings  
File: H\_FCP\_DHS\_3005.xls  
Author: S. Manganelli



## Procedure Summary

### Objectives

The ASW function "Event Filtering" is responsible of filtering of the events. Monitoring events are not filtered by this functionality, only ASWs own events.

This procedure describes the steps needed to acquire the status of the function (running idle or stopped) or a detailed report of filtered events.

### Summary of Constraints

Default status of the function: "Started".

When the function is stopped, it accepts all other telecommands apart from the Stop Function TC(8,2,117). Thus, even if the function is stopped the detailed report of filtered events can be acquired.

### Spacecraft Configuration

#### Start of Procedure

- CDMU in default configuration, that is:
- PM A or B ON (nominally A)
  - TM Encoder/OBT A or B active (nominally A)
  - RM A and B enabled
  - MM A and B ON

#### End of Procedure

- CDMU in default configuration, that is:
- PM A or B ON (nominally A)
  - TM Encoder/OBT A or B active (nominally A)
  - RM A and B enabled
  - MM A and B ON

### Reference File(s)

#### Input Command Sequences

#### Output Command Sequences

HFD3005B  
HFD3005A

### Referenced Displays

ANDs	GRDs	SLDs
ZAZAI999		(None)
ZAZ3Q999		

### Configuration Control Information

Report ASW event filter function and settings  
File: H\_FCP\_DHS\_3005.xls  
Author: S. Manganelli

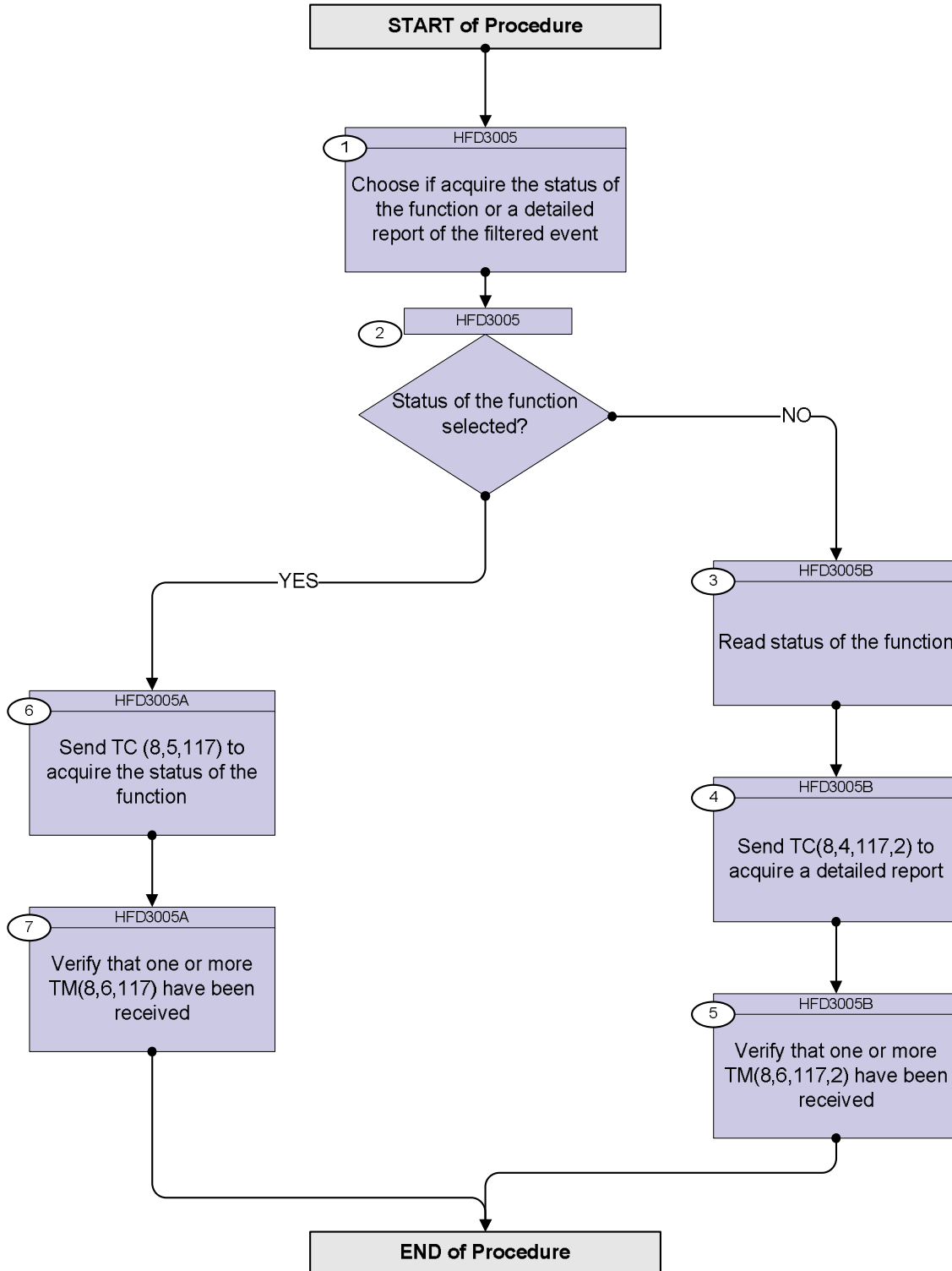


DATE	FOP ISSUE	VERSION	MODIFICATION DESCRIPTION	AUTHOR	SPR REF
12/11/07		1	Created	cmevi-hp	
03/12/07		2	Operation language changed to 'Generic'.	cmevi-hp	
16/01/08	1	3	Batch update of TC flags	S. Manganelli	
17/11/08	2	4	Following industry inputs 10 oct 08	S. Manganelli	
24/03/09	2.2	5	Updated following TAS-I comments 3 march 09	S. Manganelli	

Report ASW event filter function and settings  
 File: H\_FCP\_DHS\_3005.xls  
 Author: S. Manganelli



### Procedure Flowchart Overview



Report ASW event filter function and settings  
 File: H\_FCP\_DHS\_3005.xls  
 Author: S. Manganelli



Step No.	Time	Activity/Remarks	TC/TLM	Display/ Branch
<b>Beginning of Procedure</b>				
TC Seq. Name :HFD3005 (Dummy sequence)  TimeTag Type: Sub Schedule ID:  <input type="checkbox"/>				
1		Choose if acquire the status of the function or a detailed report of the filtered event		Next Step: 2
2		Status of the function selected?		Next Step: NO 3 YES 6
TC Seq. Name :HFD3005B (Acquire detailed rep)  TimeTag Type: Sub Schedule ID:  <input type="checkbox"/>				
3		Read status of the function		Next Step: 4
		Verify Telemetry  <div style="text-align: center;"> <b>EfSts</b>                      <b>DEG20170</b>  <b>= Running</b> </div>		AND=ZAZAI999
4		Send TC(8,4,117,2) to acquire a detailed report		Next Step: 5
		<b>This TC is used for requesting a detailed report of filtered events.</b>		
		Execute Telecommand  <div style="text-align: center;"> <b>EvFiltDumpStat_Templ</b>             TC Control Flags :   <div style="text-align: center;"> <b>GBM IL DSE</b>  <b>--Y -- --</b> </div>           Subsch. ID : 10            Det. descr. : TEMPLATE Dump Event Filtering Statistics            TC(8,4,117,2)         </div>	<b>DCT52170</b>	
5		Verify that one or more TM(8,6,117,2) have been received		Next Step: END
		<b>WARNING: it is not possible to know a priori the number of TM packets that will be sent.</b>		



Report ASW event filter function and settings  
 File: H\_FCP\_DHS\_3005.xls  
 Author: S. Manganelli



Step No.	Time	Activity/Remarks	TC/TLM	Display/ Branch
		<b>Report Event Filtering Status telecommand is used for requiring the status of the function as a telemetry packet.</b>		
		<b>Default status of the function: "started".</b>		
		Execute Telecommand  <b>ReportEvtFiltManagSts</b>  <i>TC Control Flags :</i>  <b>GBM IL DSE</b> <b>--Y -- ---</b>  <i>Subsch. ID : 10</i> <i>Det. descr. : Report Event Filtering Management Status, TC(8,5,117)</i>	DCN12170	
7		<i>Verify that one or more TM(8,6,117) have been received</i>		Next Step: END
		<b>Only one of the following two types of TM packets will be received</b>		
		<b>- If the function is started:</b>		
		Verify Packet Reception <b>TM 8-6-117 Event Filtering Status Report - running idle</b> <i>Packet Details:</i>  <b>APID: 16</b> <b>Type: 8</b> <b>Subtype: 6</b> <b>PI1: 30207</b> <b>PI2: 0</b>	EvFltStsRun	
		<b>- If the function is stopped:</b>		
		Verify Packet Reception <b>TM 8-6-117 Event Filtering Status Report - stopped</b> <i>Packet Details:</i>  <b>APID: 16</b> <b>Type: 8</b> <b>Subtype: 6</b> <b>PI1: 29952</b> <b>PI2: 0</b>	EvFltStsStop	
		<b>Each TM packet contains the following parameters:</b>		
		Verify Telemetry  <b>Function_ID DE008170</b>	<b>= EvtFiltering</b>	(None)
		Verify Telemetry  <b>MonitStsActId DE067170</b>	<b>= RunningIdle</b>	(None)
		<b>or</b>		
		Verify Telemetry  <b>MonitStsActId DE067170</b>	<b>= Stopped</b>	AND=ZAZ3Q999
		Verify Telemetry  <b>SID DE010170</b>	<b>= 0 &lt;dec&gt;</b>	(None)

Report ASW event filter function and settings  
 File: H\_FCP\_DHS\_3005.xls  
 Author: S. Manganelli



Step No.	Time	Activity/Remarks	TC/TLM	Display/ Branch
		Verify Telemetry N_Repetition DE014170		(None)
		<b>The following 2 parameters are repeated N times, if any filtering is actually defined :</b>		
		Verify Telemetry AswFunct_ID DE248170		(None)
		Verify Packet Telemetry (Pkt = EvFltStsStop) M_repetitions DE182170		
		<b>The following 2 parameters are repeated M times, if any filtering is actually defined :</b>		
		Verify Packet Telemetry EventId DE068170		
		Verify Packet Telemetry EvtFiltTime DE186170		
<b>End of Procedure</b>				