

Abort or modify rate of MTL reports  
 File: H\_FCP\_DHS\_1033.xls  
 Author: S. Manganelli



## Procedure Summary

### Objectives

This procedure can be used either to abort an on-going MTL report or to modify the rate of generation of MTL reports.  
 The TM packets affected are:

TM 11-10 Detailed schedule report  
 TM 11-13 Summary schedule report  
 TM 11-19 Command schedule status report - Subsch + Apid

Default rate at ASW MTL init is 2 TM packets/second.

### Summary of Constraints

None

### Spacecraft Configuration

**Start of Procedure**

Any

**End of Procedure**

MTL report generation rate modified or MTL report aborted

### Reference File(s)

**Input Command Sequences**

**Output Command Sequences**

HFD1033B  
 HFD1033C

### Referenced Displays

ANDs      GRDs      SLDs

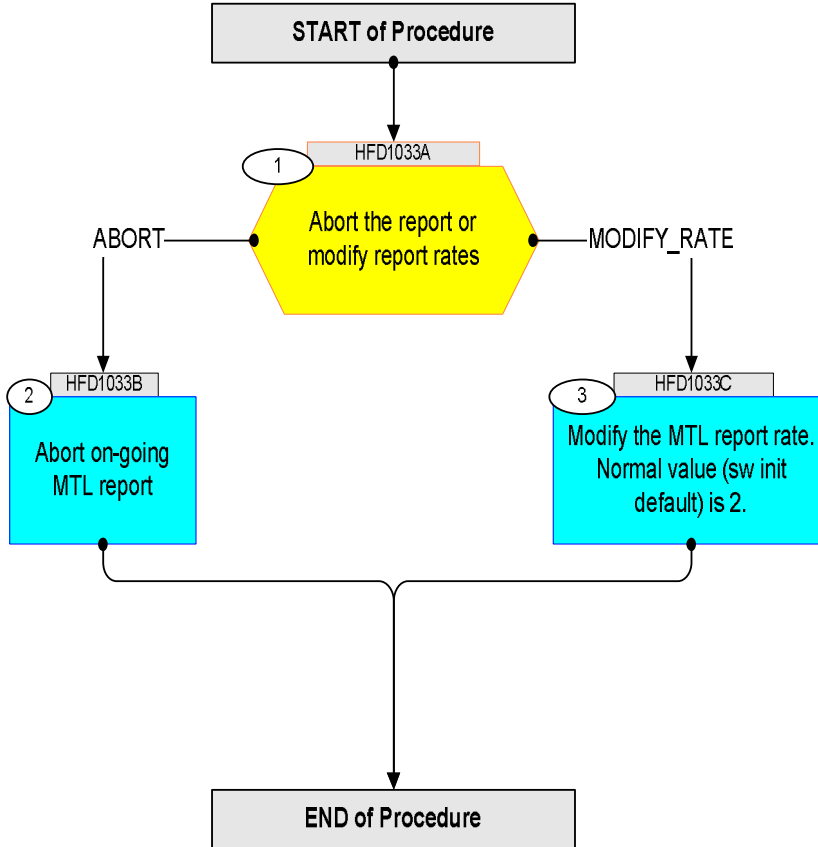
### Configuration Control Information

DATE	FOP ISSUE	VERSION	MODIFICATION DESCRIPTION	AUTHOR	SPR REF
06/01/09	2	1	Created	S. Manganelli	

Abort or modify rate of MTL reports  
File: H\_FCP\_DHS\_1033.xls  
Author: S. Manganelli



### Procedure Flowchart Overview



Abort or modify rate of MTL reports  
 File: H\_FCP\_DHS\_1033.xls  
 Author: S. Manganelli




Step No.	Time	Activity/Remarks	TC/TLM	Display/ Branch	AIT Comment
<b>Beginning of Procedure</b>					
HFD1033A <i>TC Seq. Name :HFD1033A ( Dummy )</i>  <i>TimeTag Type:</i> <i>Sub Schedule ID:</i>  <input type="checkbox"/>					
1		Abort the report or modify report rates  type: [Switch]		Next Step: ABORT 2 MODIFY_RATE 3	
End of Sequence					
HFD1033B <i>TC Seq. Name :HFD1033B ( Abort MTL report )</i>  <i>TimeTag Type: N</i> <i>Sub Schedule ID:</i>  <input type="checkbox"/>					
2		Abort on-going MTL report   Execute Telecommand <div style="text-align: right;"><b>AbortMtlRpt</b></div> <i>TC Control Flags :</i> <div style="text-align: right;"><b>GBM IL DSE</b></div> <div style="text-align: right;"><b>--Y -- ---</b></div> <i>Subsch. ID : 10</i> <i>Det. descr. : TC(8,4,105,1) Abort MTL report)</i>	<b>DCP14170</b>	<b>TC</b>	
		Verify Packet Reception  CdmuAsw Event 5-1 MTL Report Aborted Packet Mnemonic : D_EvRp_355 APID : 16 Type : 5 Subtype : 1 PI1 : 26906 PI2 : 0			
End of Sequence					
HFD1033C <i>TC Seq. Name :HFD1033C ( Modify MTL rep rate )</i>  <i>TimeTag Type: N</i> <i>Sub Schedule ID:</i>  <i>Formal Parameter List :</i> MtlReportRate 1_to_10= =					
3		Modify the MTL report rate. Normal value (sw init default) is 2.		Next Step: END	
		Allowed range for rate change is 1 (slow, 1 packet per second) to 10 (fast, 10 packets per second).  The value 0 aborts an on-going report.			

Abort or modify rate of MTL reports  
File: H\_FCP\_DHS\_1033.xls  
Author: S. Manganelli



Step No.	Time	Activity/Remarks	TC/TLM	Display/ Branch	AIT Comment
		Execute Telecommand <b>SetMtlRptRate_Templ</b>	<b>DCT93170</b>	TC	
		<i>Command Parameter(s) :</i> <b>MtlReportRate</b> <b>DH182170</b>	<b>1_to_10</b>		
		<i>TC Control Flags :</i> <b>GBM IL DSE</b> <b>--Y -- ---</b>			
		<i>Subsch. ID : 10</i> Det. descr. : TEMPLATE TC(8,4,105,1) Set MTL Report Rate (or abort report)			
		End of Sequence			
		<b>End of Procedure</b>			