

Nominal TM Pkt to Store Routing
 File: H_FCP_DHS_1004.xls
 Author: S. Manganelli



Procedure Summary

Objectives

To achieve the standard packet to packet store routing

Summary of Constraints

n/a

Spacecraft Configuration

Start of Procedure

Any routing configuration

End of Procedure

Nominal (operational) routing configuration

Reference File(s)

Input Command Sequences

Output Command Sequences

HFD1004A
 HFD1004C
 HFD1004B
 HFD1004D

Referenced Displays

ANDs GRDs SLDs
 (None)

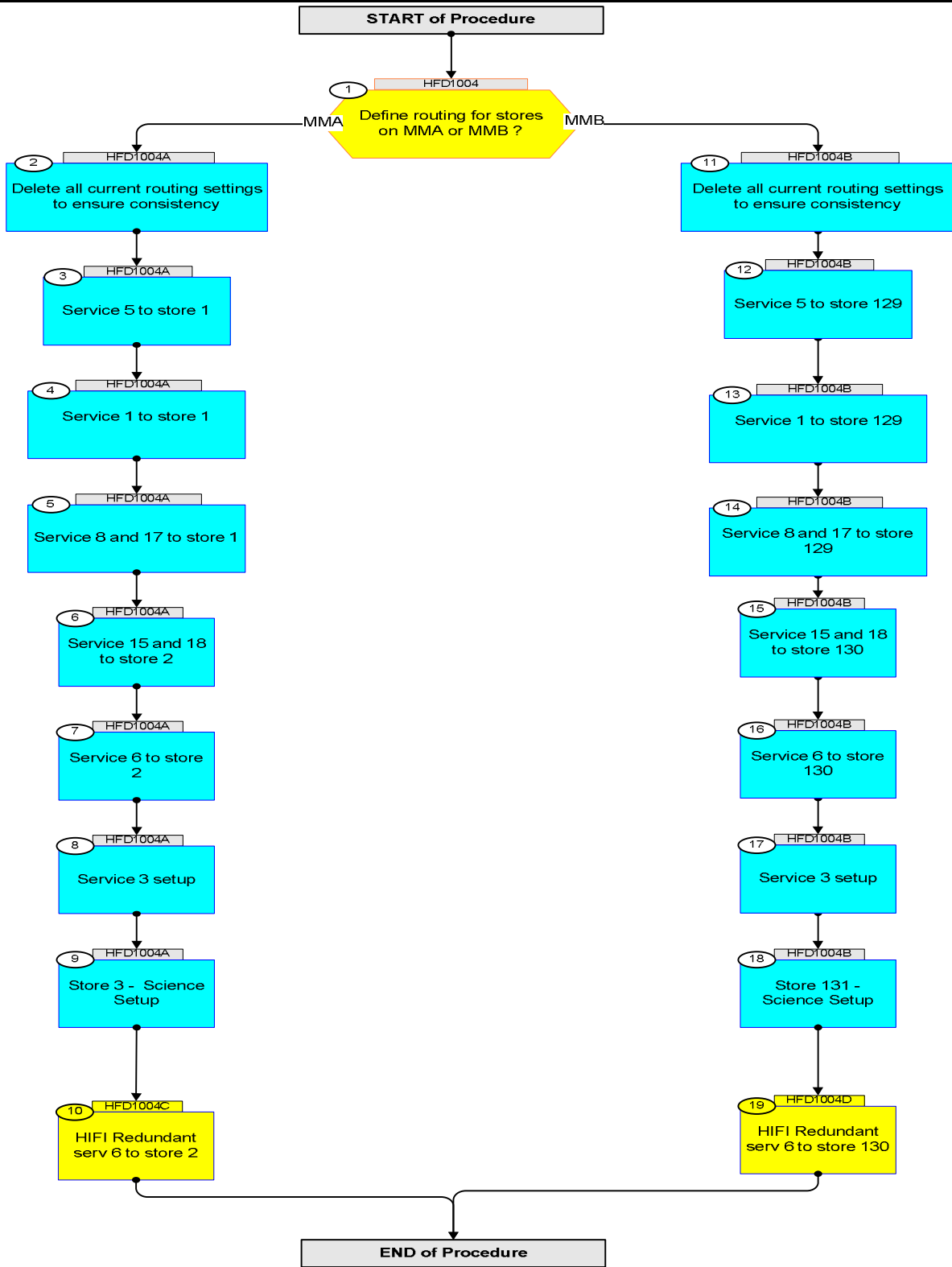
Configuration Control Information

DATE	FOP ISSUE	VERSION	MODIFICATION DESCRIPTION	AUTHOR	SPR REF
26/11/2007		1	Created	cmevi-hp	
16/01/2008		2	Batch update of TC flags	S. Manganelli	
08/02/2008		3	Used only TCs for even byte length	S. Manganelli	
11/02/2008		4	Updated with new routing concepts for APIDs 1158 and 1159.	cmevi-hp	
27/06/2008		5	Structure of commands completely modified.	cmevi-hp	
24/07/2008	1	6	TM(6,6) and TM(6,10) added on stores 2 and 130 for APIDs 1152 and 1153.	cmevi-hp	
15/09/2008		7	Syntax checked against OBSW 3.6 db.	cmevi-hp	
18/12/2008		8	DB checked. Sequence exported.	cmevi-hp	
21/01/2009	2	9	Editorial, Visio and cover sheet completed	S. Manganelli	
23/03/2009	2.2	10	Ruoting for SSMMA stores and for SSMMB stores split into two different sequences.	cmevi-hp	
11/12/2009		11	Modified steps 5 / 13 to route service 17 to SEL on SSMM A / B	S. Manganelli	
11/12/2009	3	12	Steps 5 and 13 modified to add routing of type 17 to stores 1 and 129	S. Manganelli	
15/10/2010	3.1	13	Added a final step to each branch, to store service 6 TM from HIFI redundant APID 1025. Steps added as separate sequences to avoid the need and risks to re-run all procedure.	S. Manganelli	

Nominal TM Pkt to Store Routing
 File: H_FCP_DHS_1004.xls
 Author: S. Manganeli



Procedure Flowchart Overview



Nominal TM Pkt to Store Routing File: H_FCP_DHS_1004.xls Author: S. Manganelli	 
--	--

Step No.	Time	Activity/Remarks	TC/TLM	Display/ Branch	AIT Comment
Beginning of Procedure					
HFD1004 <i>TC Seq. Name : HFD1004 (Dummy sequence)</i> <i>TimeTag Type: N</i> <i>Sub Schedule ID:</i> <input type="checkbox"/>					
1		Define routing for stores on MMA or MMB ? type: [Switch]		Next Step: MMA 2 MMB 11	
End of Sequence					
HFD1004A <i>TC Seq. Name : HFD1004A (Store Rout MMA)</i> <i>TimeTag Type: N</i> <i>Sub Schedule ID:</i> <input type="checkbox"/>					
2		Delete all current routing settings to ensure consistency		Next Step: 3	
2.1		Delete all current routing from store 1			
		Execute Telecommand <div style="text-align: right; margin-left: 100px;">RemPktDefStorageSel_E</div> <div style="text-align: right; margin-left: 100px;">DC157160</div> <i>Command Parameter(s) :</i> <div style="margin-left: 40px;"> Store_Id DH003160 1 <dec> N1 DH004160 0 <dec> </div> <i>TC Control Flags :</i> <div style="margin-left: 100px;"> GBM IL DSE --Y -- --- </div> <i>Subsch. ID : 10</i> <i>Det. descr. : Remove Pkt Def. from Storage Selection</i> <i>Def. - SUM(N1+N2) even.</i>		TC	
2.2		Delete all current routing from store 2			
		Execute Telecommand <div style="text-align: right; margin-left: 100px;">RemPktDefStorageSel_E</div> <div style="text-align: right; margin-left: 100px;">DC157160</div> <i>Command Parameter(s) :</i> <div style="margin-left: 40px;"> Store_Id DH003160 2 <dec> N1 DH004160 0 <dec> </div> <i>TC Control Flags :</i> <div style="margin-left: 100px;"> GBM IL DSE --Y -- --- </div> <i>Subsch. ID : 10</i> <i>Det. descr. : Remove Pkt Def. from Storage Selection</i> <i>Def. - SUM(N1+N2) even.</i>		TC	

Nominal TM Pkt to Store Routing
 File: H_FCP_DHS_1004.xls
 Author: S. Manganelli



Step No.	Time	Activity/Remarks	TC/TLM	Display/ Branch	AIT Comment
2.3		Delete all current routing from store 3			
		Execute Telecommand RemPktDefStorageSel_E Command Parameter(s) : Store_Id DH003160 3 <dec> N1 DH004160 0 <dec> TC Control Flags : GBM IL DSE --Y -- --- Subsch. ID : 10 Det. descr. : Remove Pkt Def. from Storage Selection Def. - SUM(N1+N2) even.	DC157160	TC	
2.4		Verify Routing Setting			
		Execute Telecommand ReportStorageSelDef Command Parameter(s) : Store_Id DH003160 1 <dec> TC Control Flags : GBM IL DSE --Y -- --- Subsch. ID : 10 Det. descr. : Report Storage Selection Definition	DC160160	TC	
		Verify Packet Reception Storage Selection Definition Report - Packet Store 0 Packet Mnemonic : StorageSel APID : 16 Type : 15 Subtype : 6 PI1 : PI2 :			
		Verify Packet Telemetry Store-ID DE050160 = 1 <dec>		(None)	
		Verify Packet Telemetry Store-Type DE051160 = Cyclic		(None)	
		Verify Packet Telemetry Storage_Sts DE063160 disabled or enabled		(None)	
		Verify Packet Telemetry Virtual-Chn DE052160 = Dump on VC2		(None)	
		Verify Packet Telemetry N1 DE064160 = 0 <dec>		(None)	
		Execute Telecommand ReportStorageSelDef Command Parameter(s) : Store_Id DH003160 2 <dec> TC Control Flags : GBM IL DSE --Y -- --- Subsch. ID : 10 Det. descr. : Report Storage Selection Definition	DC160160	TC	

Nominal TM Pkt to Store Routing
 File: H_FCP_DHS_1004.xls
 Author: S. Manganelli



Step No.	Time	Activity/Remarks	TC/TLM	Display/ Branch	AIT Comment
		Verify Packet Reception Storage Selection Definition Report - Packet Store 0 Packet Mnemonic : StorageSel APID : 16 Type : 15 Subtype : 6 PI1 : PI2 :			
		Verify Packet Telemetry Store-ID DE050160	= 2 <dec>	(None)	
		Verify Packet Telemetry Store-Type DE051160	= Cyclic	(None)	
		Verify Packet Telemetry Storage_Sts DE063160	disabled or enabled	(None)	
		Verify Packet Telemetry Virtual-Chn DE052160	= Dump on VC2	(None)	
		Verify Packet Telemetry N1 DE064160	= 0 <dec>	(None)	
		Execute Telecommand ReportStorageSelDef <i>Command Parameter(s) :</i> Store_Id DH003160 <i>TC Control Flags :</i> GBM IL DSE --Y -- --- <i>Subsch. ID : 10</i> <i>Det. descr. : Report Storage Selection Definition</i>	DC160160 3 <dec>	TC	
		Verify Packet Reception Storage Selection Definition Report - Packet Store 0 Packet Mnemonic : StorageSel APID : 16 Type : 15 Subtype : 6 PI1 : PI2 :			
		Verify Packet Telemetry Store-ID DE050160	= 3 <dec>	(None)	
		Verify Packet Telemetry Store-Type DE051160	= Cyclic	(None)	
		Verify Packet Telemetry Storage_Sts DE063160	disabled or enabled	(None)	
		Verify Packet Telemetry Virtual-Chn DE052160	= Dump on VC3	(None)	
		Verify Packet Telemetry N1 DE064160	= 0 <dec>	(None)	
3		Service 5 to store 1		Next Step: 4	

Nominal TM Pkt to Store Routing
 File: H_FCP_DHS_1004.xls
 Author: S. Manganelli



Step No.	Time	Activity/Remarks	TC/TLM	Display/ Branch	AIT Comment
		Execute Telecommand AddPktDefStorageSel_E Command Parameter(s) : Store_Id DH003160 1 <dec> N1 DH004160 8 <dec> App_Process_Id DH065160 Cdms Type DH066160 5 <dec> N2 DH005160 0 <dec> App_Process_Id DH065160 Acms Type DH066160 5 <dec> N2 DH005160 0 <dec> App_Process_Id DH065160 HifiPri Type DH066160 5 <dec> N2 DH005160 0 <dec> App_Process_Id DH065160 HifiRed Type DH066160 5 <dec> N2 DH005160 0 <dec> App_Process_Id DH065160 PacsPri Type DH066160 5 <dec> N2 DH005160 0 <dec> App_Process_Id DH065160 PacsRed Type DH066160 5 <dec> N2 DH005160 0 <dec> App_Process_Id DH065160 SpirePri Type DH066160 5 <dec> N2 DH005160 0 <dec> App_Process_Id DH065160 SpireRed Type DH066160 5 <dec> N2 DH005160 0 <dec> TC Control Flags : GBM IL DSE --Y -- --- Subsch. ID : 10 Det. descr. : Add Pkt Def. to Storage Selection Def. - SUM(N1+N2) even.	DC154160	TC	
4		Service 1 to store 1		Next Step: 5	
		Execute Telecommand AddPktDefStorageSel_E Command Parameter(s) : Store_Id DH003160 1 <dec> N1 DH004160 8 <dec> App_Process_Id DH065160 Cdms Type DH066160 1 <dec> N2 DH005160 0 <dec> App_Process_Id DH065160 Acms Type DH066160 1 <dec> N2 DH005160 0 <dec> App_Process_Id DH065160 HifiPri Type DH066160 1 <dec> N2 DH005160 0 <dec> App_Process_Id DH065160 HifiRed Type DH066160 1 <dec> N2 DH005160 0 <dec> App_Process_Id DH065160 PacsPri Type DH066160 1 <dec> N2 DH005160 0 <dec> App_Process_Id DH065160 PacsRed Type DH066160 1 <dec> N2 DH005160 0 <dec> App_Process_Id DH065160 SpirePri Type DH066160 1 <dec> N2 DH005160 0 <dec> App_Process_Id DH065160 SpireRed Type DH066160 1 <dec> N2 DH005160 0 <dec>	DC154160	TC	

Nominal TM Pkt to Store Routing
 File: H_FCP_DHS_1004.xls
 Author: S. Manganelli



Step No.	Time	Activity/Remarks	TC/TLM	Display/ Branch	AIT Comment																																																																																	
		TC Control Flags : <p style="text-align: right;">GBM IL DSE --Y -- ---</p> Subsch. ID : 10 Det. descr. : Add Pkt Def. to Storage Selection Def. - SUM(N1+N2) even.																																																																																				
5		Service 8 and 17 to store 1		Next Step: 6																																																																																		
		Execute Telecommand <p style="text-align: center;">AddPktDefStorageSel_E</p> <p style="text-align: center;">DC154160</p> Command Parameter(s) : <table style="width: 100%; border-collapse: collapse;"> <tr><td style="width: 30%;">Store_Id</td><td style="width: 20%;">DH003160</td><td style="width: 10%;">1 <dec></td></tr> <tr><td>N1</td><td>DH004160</td><td>8 <dec></td></tr> <tr><td>App_Process_Id</td><td>DH065160</td><td>Cdms</td></tr> <tr><td>Type</td><td>DH066160</td><td>8 <dec></td></tr> <tr><td>N2</td><td>DH005160</td><td>0 <dec></td></tr> <tr><td>App_Process_Id</td><td>DH065160</td><td>Acms</td></tr> <tr><td>Type</td><td>DH066160</td><td>8 <dec></td></tr> <tr><td>N2</td><td>DH005160</td><td>0 <dec></td></tr> <tr><td>App_Process_Id</td><td>DH065160</td><td>HifiPri</td></tr> <tr><td>Type</td><td>DH066160</td><td>8 <dec></td></tr> <tr><td>N2</td><td>DH005160</td><td>0 <dec></td></tr> <tr><td colspan="3"> </td></tr> <tr><td>App_Process_Id</td><td>DH065160</td><td>HifiRed</td></tr> <tr><td>Type</td><td>DH066160</td><td>8 <dec></td></tr> <tr><td>N2</td><td>DH005160</td><td>0 <dec></td></tr> <tr><td>App_Process_Id</td><td>DH065160</td><td>PacsPri</td></tr> <tr><td>Type</td><td>DH066160</td><td>8 <dec></td></tr> <tr><td>N2</td><td>DH005160</td><td>0 <dec></td></tr> <tr><td>App_Process_Id</td><td>DH065160</td><td>PacsRed</td></tr> <tr><td>Type</td><td>DH066160</td><td>8 <dec></td></tr> <tr><td>N2</td><td>DH005160</td><td>0 <dec></td></tr> <tr><td>App_Process_Id</td><td>DH065160</td><td>SpirePri</td></tr> <tr><td>Type</td><td>DH066160</td><td>8 <dec></td></tr> <tr><td>N2</td><td>DH005160</td><td>0 <dec></td></tr> <tr><td>App_Process_Id</td><td>DH065160</td><td>SpireRed</td></tr> <tr><td>Type</td><td>DH066160</td><td>8 <dec></td></tr> <tr><td>N2</td><td>DH005160</td><td>0 <dec></td></tr> </table> TC Control Flags : <p style="text-align: right;">GBM IL DSE --Y -- ---</p> Subsch. ID : 10 Det. descr. : Add Pkt Def. to Storage Selection Def. - SUM(N1+N2) even.	Store_Id	DH003160	1 <dec>	N1	DH004160	8 <dec>	App_Process_Id	DH065160	Cdms	Type	DH066160	8 <dec>	N2	DH005160	0 <dec>	App_Process_Id	DH065160	Acms	Type	DH066160	8 <dec>	N2	DH005160	0 <dec>	App_Process_Id	DH065160	HifiPri	Type	DH066160	8 <dec>	N2	DH005160	0 <dec>				App_Process_Id	DH065160	HifiRed	Type	DH066160	8 <dec>	N2	DH005160	0 <dec>	App_Process_Id	DH065160	PacsPri	Type	DH066160	8 <dec>	N2	DH005160	0 <dec>	App_Process_Id	DH065160	PacsRed	Type	DH066160	8 <dec>	N2	DH005160	0 <dec>	App_Process_Id	DH065160	SpirePri	Type	DH066160	8 <dec>	N2	DH005160	0 <dec>	App_Process_Id	DH065160	SpireRed	Type	DH066160	8 <dec>	N2	DH005160	0 <dec>		TC	
Store_Id	DH003160	1 <dec>																																																																																				
N1	DH004160	8 <dec>																																																																																				
App_Process_Id	DH065160	Cdms																																																																																				
Type	DH066160	8 <dec>																																																																																				
N2	DH005160	0 <dec>																																																																																				
App_Process_Id	DH065160	Acms																																																																																				
Type	DH066160	8 <dec>																																																																																				
N2	DH005160	0 <dec>																																																																																				
App_Process_Id	DH065160	HifiPri																																																																																				
Type	DH066160	8 <dec>																																																																																				
N2	DH005160	0 <dec>																																																																																				
App_Process_Id	DH065160	HifiRed																																																																																				
Type	DH066160	8 <dec>																																																																																				
N2	DH005160	0 <dec>																																																																																				
App_Process_Id	DH065160	PacsPri																																																																																				
Type	DH066160	8 <dec>																																																																																				
N2	DH005160	0 <dec>																																																																																				
App_Process_Id	DH065160	PacsRed																																																																																				
Type	DH066160	8 <dec>																																																																																				
N2	DH005160	0 <dec>																																																																																				
App_Process_Id	DH065160	SpirePri																																																																																				
Type	DH066160	8 <dec>																																																																																				
N2	DH005160	0 <dec>																																																																																				
App_Process_Id	DH065160	SpireRed																																																																																				
Type	DH066160	8 <dec>																																																																																				
N2	DH005160	0 <dec>																																																																																				
		Execute Telecommand <p style="text-align: center;">AddPktDefStorageSel_E</p> <p style="text-align: center;">DC154160</p> Command Parameter(s) : <table style="width: 100%; border-collapse: collapse;"> <tr><td style="width: 30%;">Store_Id</td><td style="width: 20%;">DH003160</td><td style="width: 10%;">1 <dec></td></tr> <tr><td>N1</td><td>DH004160</td><td>8 <dec></td></tr> <tr><td>App_Process_Id</td><td>DH065160</td><td>Cdms</td></tr> <tr><td>Type</td><td>DH066160</td><td>17 <dec></td></tr> <tr><td>N2</td><td>DH005160</td><td>0 <dec></td></tr> <tr><td>App_Process_Id</td><td>DH065160</td><td>Acms</td></tr> <tr><td>Type</td><td>DH066160</td><td>17 <dec></td></tr> <tr><td>N2</td><td>DH005160</td><td>0 <dec></td></tr> <tr><td>App_Process_Id</td><td>DH065160</td><td>HifiPri</td></tr> <tr><td>Type</td><td>DH066160</td><td>17 <dec></td></tr> <tr><td>N2</td><td>DH005160</td><td>0 <dec></td></tr> </table>	Store_Id	DH003160	1 <dec>	N1	DH004160	8 <dec>	App_Process_Id	DH065160	Cdms	Type	DH066160	17 <dec>	N2	DH005160	0 <dec>	App_Process_Id	DH065160	Acms	Type	DH066160	17 <dec>	N2	DH005160	0 <dec>	App_Process_Id	DH065160	HifiPri	Type	DH066160	17 <dec>	N2	DH005160	0 <dec>		TC																																																	
Store_Id	DH003160	1 <dec>																																																																																				
N1	DH004160	8 <dec>																																																																																				
App_Process_Id	DH065160	Cdms																																																																																				
Type	DH066160	17 <dec>																																																																																				
N2	DH005160	0 <dec>																																																																																				
App_Process_Id	DH065160	Acms																																																																																				
Type	DH066160	17 <dec>																																																																																				
N2	DH005160	0 <dec>																																																																																				
App_Process_Id	DH065160	HifiPri																																																																																				
Type	DH066160	17 <dec>																																																																																				
N2	DH005160	0 <dec>																																																																																				

Nominal TM Pkt to Store Routing
 File: H_FCP_DHS_1004.xls
 Author: S. Manganelli



Step No.	Time	Activity/Remarks	TC/TLM	Display/ Branch	AIT Comment
		<p>App_Process_Id DH065160 HifiRed Type DH066160 17 <dec> N2 DH005160 0 <dec> App_Process_Id DH065160 PacsPri Type DH066160 17 <dec> N2 DH005160 0 <dec> App_Process_Id DH065160 PacsRed Type DH066160 17 <dec> N2 DH005160 0 <dec> App_Process_Id DH065160 SpirePri Type DH066160 17 <dec> N2 DH005160 0 <dec> App_Process_Id DH065160 SpireRed Type DH066160 17 <dec> N2 DH005160 0 <dec></p> <p>TC Control Flags : GBM IL DSE --Y -- ---</p> <p>Subsch. ID : 10 Det. descr. : Add Pkt Def. to Storage Selection Def. - SUM(N1+N2) even.</p>			
6		Service 15 and 18 to store 2		Next Step: 7	
		<p>Execute Telecommand AddPktDefStorageSel_E DC154160</p> <p>Command Parameter(s) : Store_Id DH003160 2 <dec> N1 DH004160 2 <dec> App_Process_Id DH065160 Cdms Type DH066160 15 <dec> N2 DH005160 2 <dec> Sub-Type DH067160 6 <dec> Sub-Type DH067160 13 <dec> App_Process_Id DH065160 Cdms Type DH066160 18 <dec> N2 DH005160 2 <dec> Sub-Type DH067160 11 <dec> Sub-Type DH067160 13 <dec></p> <p>TC Control Flags : GBM IL DSE --Y -- ---</p> <p>Subsch. ID : 10 Det. descr. : Add Pkt Def. to Storage Selection Def. - SUM(N1+N2) even.</p>		TC	
7		Service 6 to store 2		Next Step: 8	
		<p>Execute Telecommand AddPktDefStorageSel_E DC154160</p> <p>Command Parameter(s) : Store_Id DH003160 2 <dec> N1 DH004160 4 <dec> App_Process_Id DH065160 PacsPri Type DH066160 6 <dec> N2 DH005160 0 <dec> App_Process_Id DH065160 PacsRed Type DH066160 6 <dec> N2 DH005160 0 <dec> App_Process_Id DH065160 SpirePri Type DH066160 6 <dec> N2 DH005160 0 <dec></p>		TC	

Nominal TM Pkt to Store Routing
 File: H_FCP_DHS_1004.xls
 Author: S. Manganelli



Step No.	Time	Activity/Remarks	TC/TLM	Display/ Branch	AIT Comment
		<p>App_Process_Id DH065160 Type DH066160 N2 DH005160</p> <p>TC Control Flags : GBM IL DSE --Y -- ---</p> <p>Subsch. ID : 10 Det. descr. : Add Pkt Def. to Storage Selection Def. - SUM(N1+N2) even.</p>	<p>SpireRed 6 <dec> 0 <dec></p>		
8		Service 3 setup		Next Step: 9	
8.1		Service 3 essential to store 2			
		<p>Execute Telecommand</p> <p style="text-align: center;">AddPktDefStorageSel_E</p> <p style="text-align: center;">DC154160</p> <p>Command Parameter(s) :</p> <p>Store_Id DH003160 2 <dec> N1 DH004160 8 <dec> App_Process_Id DH065160 Cdms Type DH066160 3 <dec> N2 DH005160 0 <dec> App_Process_Id DH065160 Acms Type DH066160 3 <dec> N2 DH005160 0 <dec> App_Process_Id DH065160 HifiPri Type DH066160 3 <dec> N2 DH005160 0 <dec> App_Process_Id DH065160 HifiRed Type DH066160 3 <dec> N2 DH005160 0 <dec> App_Process_Id DH065160 PacsPri Type DH066160 3 <dec> N2 DH005160 0 <dec> App_Process_Id DH065160 PacsRed Type DH066160 3 <dec> N2 DH005160 0 <dec> App_Process_Id DH065160 SpirePri Type DH066160 3 <dec> N2 DH005160 0 <dec> App_Process_Id DH065160 SpireRed Type DH066160 3 <dec> N2 DH005160 0 <dec></p> <p>TC Control Flags : GBM IL DSE --Y -- ---</p> <p>Subsch. ID : 10 Det. descr. : Add Pkt Def. to Storage Selection Def. - SUM(N1+N2) even.</p>		TC	
8.2		Service 3 Non Ess to store 2			

Nominal TM Pkt to Store Routing
 File: H_FCP_DHS_1004.xls
 Author: S. Manganelli



Step No.	Time	Activity/Remarks	TC/TLM	Display/ Branch	AIT Comment
		Execute Telecommand AddPktDefStorageSel_E Command Parameter(s) : Store_Id DH003160 2 <dec> N1 DH004160 8 <dec> App_Process_Id DH065160 CdmsDiagHk Type DH066160 3 <dec> N2 DH005160 0 <dec> App_Process_Id DH065160 AcmsDiagHk Type DH066160 3 <dec> N2 DH005160 0 <dec> App_Process_Id DH065160 HifiPriDiagHk Type DH066160 3 <dec> N2 DH005160 0 <dec> App_Process_Id DH065160 HifiRedDiagHk Type DH066160 3 <dec> N2 DH005160 0 <dec> App_Process_Id DH065160 PacsPriDiagHk Type DH066160 3 <dec> N2 DH005160 0 <dec> App_Process_Id DH065160 PacsRedDiagHk Type DH066160 3 <dec> N2 DH005160 0 <dec> App_Process_Id DH065160 SpirePriDiagHk Type DH066160 3 <dec> N2 DH005160 0 <dec> App_Process_Id DH065160 SpireRedDiagHk Type DH066160 3 <dec> N2 DH005160 0 <dec> TC Control Flags : GBM IL DSE --Y -- --- Subsch. ID : 10 Det. descr. : Add Pkt Def. to Storage Selection Def. - SUM(N1+N2) even.	DC154160	TC	
8.3		Remove service 3 useless combinations			
		Execute Telecommand RemPktDefStorageSel_E Command Parameter(s) : Store_Id DH003160 2 <dec> N1 DH004160 8 <dec> App_Process_Id DH065160 Cdms Type DH066160 3 <dec> N2 DH005160 1 <dec> (Def) Sub-Type DH067160 26 <dec> App_Process_Id DH065160 Acms Type DH066160 3 <dec> N2 DH005160 1 <dec> (Def) Sub-Type DH067160 26 <dec> App_Process_Id DH065160 HifiPri Type DH066160 3 <dec> N2 DH005160 1 <dec> (Def) Sub-Type DH067160 26 <dec> App_Process_Id DH065160 HifiRed Type DH066160 3 <dec> N2 DH005160 1 <dec> (Def) Sub-Type DH067160 26 <dec> App_Process_Id DH065160 PacsPri Type DH066160 3 <dec> N2 DH005160 1 <dec> (Def) Sub-Type DH067160 26 <dec> App_Process_Id DH065160 PacsRed Type DH066160 3 <dec> N2 DH005160 1 <dec> (Def) Sub-Type DH067160 26 <dec>	DC157160	TC	

Nominal TM Pkt to Store Routing
File: H_FCP_DHS_1004.xls
Author: S. Manganelli



Step No.	Time	Activity/Remarks	TC/TLM	Display/ Branch	AIT Comment
		<p>App_Process_Id DH065160 SpirePri Type DH066160 3 <dec> N2 DH005160 1 <dec> (Def) Sub-Type DH067160 26 <dec> App_Process_Id DH065160 SpireRed Type DH066160 3 <dec> N2 DH005160 1 <dec> (Def) Sub-Type DH067160 26 <dec></p> <p>TC Control Flags : GBM IL DSE --Y -- ---</p> <p>Subsch. ID : 10 Det. descr. : Remove Pkt Def. from Storage Selection Def. - SUM(N1+N2) even.</p>			
		<p>Execute Telecommand</p> <p>RemPktDefStorageSel_E DC157160</p> <p>Command Parameter(s) :</p> <p>Store_Id DH003160 2 <dec> N1 DH004160 8 <dec> App_Process_Id DH065160 CdmsDiagHk Type DH066160 3 <dec> N2 DH005160 2 <dec> Sub-Type DH067160 10 <dec> Sub-Type DH067160 12 <dec> App_Process_Id DH065160 AcmsDiagHk Type DH066160 3 <dec> N2 DH005160 2 <dec> Sub-Type DH067160 10 <dec> Sub-Type DH067160 12 <dec> App_Process_Id DH065160 HifiPriDiagHk Type DH066160 3 <dec> N2 DH005160 2 <dec> Sub-Type DH067160 10 <dec> Sub-Type DH067160 12 <dec> App_Process_Id DH065160 HifiRedDiagHk Type DH066160 3 <dec> N2 DH005160 2 <dec> Sub-Type DH067160 10 <dec> Sub-Type DH067160 12 <dec> App_Process_Id DH065160 FacsPriDiagHk Type DH066160 3 <dec> N2 DH005160 2 <dec> Sub-Type DH067160 10 <dec> Sub-Type DH067160 12 <dec> App_Process_Id DH065160 SpirePriDiagHk Type DH066160 3 <dec> N2 DH005160 2 <dec> Sub-Type DH067160 10 <dec> Sub-Type DH067160 12 <dec> App_Process_Id DH065160 SpireRedDiagHk Type DH066160 3 <dec> N2 DH005160 2 <dec> Sub-Type DH067160 10 <dec> Sub-Type DH067160 12 <dec></p> <p>TC Control Flags : GBM IL DSE --Y -- ---</p> <p>Subsch. ID : 10 Det. descr. : Remove Pkt Def. from Storage Selection Def. - SUM(N1+N2) even.</p>		TC	
9		Store 3 - Science Setup		Next Step: 10	

Nominal TM Pkt to Store Routing File: H_FCP_DHS_1004.xls Author: S. Manganelli	
--	--

Step No.	Time	Activity/Remarks	TC/TLM	Display/ Branch	AIT Comment																																																																					
9.1		Pacs Diag Science to store 3																																																																								
		Execute Telecommand <div style="text-align: right; margin-left: 100px;">AddPktDefStorageSel_E</div> <div style="text-align: right; margin-left: 100px;">DC154160</div> Command Parameter(s) : <table style="width:100%; border: none;"> <tr><td style="padding-left: 40px;">Store_Id</td><td>DH003160</td><td>3 <dec></td></tr> <tr><td style="padding-left: 40px;">N1</td><td>DH004160</td><td>2 <dec></td></tr> <tr><td style="padding-left: 20px;">App_Process_Id</td><td>DH065160</td><td>PacsPriSciDiag</td></tr> <tr><td style="padding-left: 40px;">Type</td><td>DH066160</td><td>21 <dec></td></tr> <tr><td style="padding-left: 40px;">N2</td><td>DH005160</td><td>1 <dec> (Def)</td></tr> <tr><td style="padding-left: 40px;">Sub-Type</td><td>DH067160</td><td>3 <dec></td></tr> <tr><td style="padding-left: 20px;">App_Process_Id</td><td>DH065160</td><td>PacsRedSciDiag</td></tr> <tr><td style="padding-left: 40px;">Type</td><td>DH066160</td><td>21 <dec></td></tr> <tr><td style="padding-left: 40px;">N2</td><td>DH005160</td><td>1 <dec> (Def)</td></tr> <tr><td style="padding-left: 40px;">Sub-Type</td><td>DH067160</td><td>3 <dec></td></tr> </table> TC Control Flags : <div style="text-align: right; margin-left: 100px;">GBM IL DSE</div> <div style="text-align: right; margin-left: 100px;">--Y -- ---</div> Subsch. ID : 10 Det. descr. : Add Pkt Def. to Storage Selection Def. - SUM(N1+N2) even.	Store_Id	DH003160	3 <dec>	N1	DH004160	2 <dec>	App_Process_Id	DH065160	PacsPriSciDiag	Type	DH066160	21 <dec>	N2	DH005160	1 <dec> (Def)	Sub-Type	DH067160	3 <dec>	App_Process_Id	DH065160	PacsRedSciDiag	Type	DH066160	21 <dec>	N2	DH005160	1 <dec> (Def)	Sub-Type	DH067160	3 <dec>		TC																																								
Store_Id	DH003160	3 <dec>																																																																								
N1	DH004160	2 <dec>																																																																								
App_Process_Id	DH065160	PacsPriSciDiag																																																																								
Type	DH066160	21 <dec>																																																																								
N2	DH005160	1 <dec> (Def)																																																																								
Sub-Type	DH067160	3 <dec>																																																																								
App_Process_Id	DH065160	PacsRedSciDiag																																																																								
Type	DH066160	21 <dec>																																																																								
N2	DH005160	1 <dec> (Def)																																																																								
Sub-Type	DH067160	3 <dec>																																																																								
9.2		All science TM for other Science APIDs to store 3																																																																								
		Execute Telecommand <div style="text-align: right; margin-left: 100px;">AddPktDefStorageSel_E</div> <div style="text-align: right; margin-left: 100px;">DC154160</div> Command Parameter(s) : <table style="width:100%; border: none;"> <tr><td style="padding-left: 40px;">Store_Id</td><td>DH003160</td><td>3 <dec></td></tr> <tr><td style="padding-left: 40px;">N1</td><td>DH004160</td><td>7 <dec></td></tr> <tr><td style="padding-left: 20px;">App_Process_Id</td><td>DH065160</td><td>HifiSci0</td></tr> <tr><td style="padding-left: 40px;">Type</td><td>DH066160</td><td>21 <dec></td></tr> <tr><td style="padding-left: 40px;">N2</td><td>DH005160</td><td>0 <dec></td></tr> <tr><td style="padding-left: 20px;">App_Process_Id</td><td>DH065160</td><td>HifiSci1</td></tr> <tr><td style="padding-left: 40px;">Type</td><td>DH066160</td><td>21 <dec></td></tr> <tr><td style="padding-left: 40px;">N2</td><td>DH005160</td><td>0 <dec></td></tr> <tr><td style="padding-left: 20px;">App_Process_Id</td><td>DH065160</td><td>HifiSci2</td></tr> <tr><td style="padding-left: 40px;">Type</td><td>DH066160</td><td>21 <dec></td></tr> <tr><td style="padding-left: 40px;">N2</td><td>DH005160</td><td>0 <dec></td></tr> <tr><td style="padding-left: 20px;">App_Process_Id</td><td>DH065160</td><td>HifiSci3</td></tr> <tr><td style="padding-left: 40px;">Type</td><td>DH066160</td><td>21 <dec></td></tr> <tr><td style="padding-left: 40px;">N2</td><td>DH005160</td><td>0 <dec></td></tr> <tr><td style="padding-left: 20px;">App_Process_Id</td><td>DH065160</td><td>PacsPriSci0</td></tr> <tr><td style="padding-left: 40px;">Type</td><td>DH066160</td><td>21 <dec></td></tr> <tr><td style="padding-left: 40px;">N2</td><td>DH005160</td><td>0 <dec></td></tr> <tr><td style="padding-left: 20px;">App_Process_Id</td><td>DH065160</td><td>PacsRedSci0</td></tr> <tr><td style="padding-left: 40px;">Type</td><td>DH066160</td><td>21 <dec></td></tr> <tr><td style="padding-left: 40px;">N2</td><td>DH005160</td><td>0 <dec></td></tr> <tr><td style="padding-left: 20px;">App_Process_Id</td><td>DH065160</td><td>PacsPriSci1</td></tr> <tr><td style="padding-left: 40px;">Type</td><td>DH066160</td><td>21 <dec></td></tr> <tr><td style="padding-left: 40px;">N2</td><td>DH005160</td><td>0 <dec></td></tr> </table> TC Control Flags : <div style="text-align: right; margin-left: 100px;">GBM IL DSE</div> <div style="text-align: right; margin-left: 100px;">--Y -- ---</div> Subsch. ID : 10 Det. descr. : Add Pkt Def. to Storage Selection Def. - SUM(N1+N2) even.	Store_Id	DH003160	3 <dec>	N1	DH004160	7 <dec>	App_Process_Id	DH065160	HifiSci0	Type	DH066160	21 <dec>	N2	DH005160	0 <dec>	App_Process_Id	DH065160	HifiSci1	Type	DH066160	21 <dec>	N2	DH005160	0 <dec>	App_Process_Id	DH065160	HifiSci2	Type	DH066160	21 <dec>	N2	DH005160	0 <dec>	App_Process_Id	DH065160	HifiSci3	Type	DH066160	21 <dec>	N2	DH005160	0 <dec>	App_Process_Id	DH065160	PacsPriSci0	Type	DH066160	21 <dec>	N2	DH005160	0 <dec>	App_Process_Id	DH065160	PacsRedSci0	Type	DH066160	21 <dec>	N2	DH005160	0 <dec>	App_Process_Id	DH065160	PacsPriSci1	Type	DH066160	21 <dec>	N2	DH005160	0 <dec>		TC	
Store_Id	DH003160	3 <dec>																																																																								
N1	DH004160	7 <dec>																																																																								
App_Process_Id	DH065160	HifiSci0																																																																								
Type	DH066160	21 <dec>																																																																								
N2	DH005160	0 <dec>																																																																								
App_Process_Id	DH065160	HifiSci1																																																																								
Type	DH066160	21 <dec>																																																																								
N2	DH005160	0 <dec>																																																																								
App_Process_Id	DH065160	HifiSci2																																																																								
Type	DH066160	21 <dec>																																																																								
N2	DH005160	0 <dec>																																																																								
App_Process_Id	DH065160	HifiSci3																																																																								
Type	DH066160	21 <dec>																																																																								
N2	DH005160	0 <dec>																																																																								
App_Process_Id	DH065160	PacsPriSci0																																																																								
Type	DH066160	21 <dec>																																																																								
N2	DH005160	0 <dec>																																																																								
App_Process_Id	DH065160	PacsRedSci0																																																																								
Type	DH066160	21 <dec>																																																																								
N2	DH005160	0 <dec>																																																																								
App_Process_Id	DH065160	PacsPriSci1																																																																								
Type	DH066160	21 <dec>																																																																								
N2	DH005160	0 <dec>																																																																								

Nominal TM Pkt to Store Routing
 File: H_FCP_DHS_1004.xls
 Author: S. Manganelli



Step No.	Time	Activity/Remarks	TC/TLM	Display/ Branch	AIT Comment
		Execute Telecommand AddPktDefStorageSel_E Command Parameter(s) : Store_Id DH003160 3 <dec> N1 DH004160 7 <dec> App_Process_Id DH065160 PacsRedSci1 Type DH066160 21 <dec> N2 DH005160 0 <dec> App_Process_Id DH065160 SpirePriSci0 Type DH066160 21 <dec> N2 DH005160 0 <dec> App_Process_Id DH065160 SpireRedSci0 Type DH066160 21 <dec> N2 DH005160 0 <dec> App_Process_Id DH065160 SpirePriSci1 Type DH066160 21 <dec> N2 DH005160 0 <dec> App_Process_Id DH065160 SpireRedSci1 Type DH066160 21 <dec> N2 DH005160 0 <dec> App_Process_Id DH065160 SpirePriSci2 Type DH066160 21 <dec> N2 DH005160 0 <dec> App_Process_Id DH065160 SpireRedSci2 Type DH066160 21 <dec> N2 DH005160 0 <dec> TC Control Flags : GBM IL DSE --Y -- --- Subsch. ID : 10 Det. descr. : Add Pkt Def. to Storage Selection Def. - SUM(N1+N2) even.	DC154160	TC	
9.3		Remove diag science from non diag PACS APIDs			
		Execute Telecommand RemPktDefStorageSel_E Command Parameter(s) : Store_Id DH003160 3 <dec> N1 DH004160 4 <dec> App_Process_Id DH065160 PacsPriSci0 Type DH066160 21 <dec> N2 DH005160 1 <dec> (Def) Sub-Type DH067160 3 <dec> App_Process_Id DH065160 PacsRedSci0 Type DH066160 21 <dec> N2 DH005160 1 <dec> (Def) Sub-Type DH067160 3 <dec> App_Process_Id DH065160 PacsPriSci1 Type DH066160 21 <dec> N2 DH005160 1 <dec> (Def) Sub-Type DH067160 3 <dec> App_Process_Id DH065160 PacsRedSci1 Type DH066160 21 <dec> N2 DH005160 1 <dec> (Def) Sub-Type DH067160 3 <dec> TC Control Flags : GBM IL DSE --Y -- --- Subsch. ID : 10 Det. descr. : Remove Pkt Def. from Storage Selection Def. - SUM(N1+N2) even.	DC157160	TC	

Nominal TM Pkt to Store Routing
 File: H_FCP_DHS_1004.xls
 Author: S. Manganelli



Step No.	Time	Activity/Remarks	TC/TLM	Display/ Branch	AIT Comment
9.4		Verify Routing Setting			
		Execute Telecommand ReportStorageSelDef Command Parameter(s) : Store_Id DH003160 TC Control Flags : GBM IL DSE --Y -- --- Subsch. ID : 10 Det. descr. : Report Storage Selection Definition	DC160160 1 <dec>	TC	
		Verify Packet Reception Storage Selection Definition Report - Packet Store 0 Packet Mnemonic : StorageSel APID : 16 Type : 15 Subtype : 6 PI1 : PI2 :			
		Verify Packet Telemetry Store-ID DE050160	= 1 <dec>	(None)	
		Verify Packet Telemetry Store-Type DE051160	= Cyclic	(None)	
		Verify Packet Telemetry Storage_Sts DE063160	disabled or enabled	(None)	
		Verify Packet Telemetry Virtual-Chn DE052160	= Dump on VC2	(None)	
		Verify Packet Telemetry N1 DE064160	As commanded	(None)	
		Execute Telecommand ReportStorageSelDef Command Parameter(s) : Store_Id DH003160 TC Control Flags : GBM IL DSE --Y -- --- Subsch. ID : 10 Det. descr. : Report Storage Selection Definition	DC160160 2 <dec>	TC	
		Verify Packet Reception Storage Selection Definition Report - Packet Store 0 Packet Mnemonic : StorageSel APID : 16 Type : 15 Subtype : 6 PI1 : PI2 :			
		Verify Packet Telemetry Store-ID DE050160	= 2 <dec>	(None)	
		Verify Packet Telemetry Store-Type DE051160	= Cyclic	(None)	
		Verify Packet Telemetry Storage_Sts DE063160	disabled or enabled	(None)	
		Verify Packet Telemetry Virtual-Chn DE052160	= Dump on VC2	(None)	

Nominal TM Pkt to Store Routing
 File: H_FCP_DHS_1004.xls
 Author: S. Manganelli



Step No.	Time	Activity/Remarks	TC/TLM	Display/ Branch	AIT Comment
		Verify Packet Telemetry N1 DE064160	As commanded	(None)	
		Execute Telecommand ReportStorageSelDef Command Parameter(s) : Store_Id DH003160 TC Control Flags : GBM IL DSE --Y -- --- Subsch. ID : 10 Det. descr. : Report Storage Selection Definition	DC160160 3 <dec>	TC	
		Verify Packet Reception Storage Selection Definition Report - Packet Store 0 Packet Mnemonic : StorageSel APID : 16 Type : 15 Subtype : 6 PI1 : PI2 :			
		Verify Packet Telemetry Store-ID DE050160	= 3 <dec>	(None)	
		Verify Packet Telemetry Store-Type DE051160	= Cyclic	(None)	
		Verify Packet Telemetry Storage_Sts DE063160	disabled or enabled	(None)	
		Verify Packet Telemetry Virtual-Chn DE052160	= Dump on VC3	(None)	
		Verify Packet Telemetry N1 DE064160	As commanded	(None)	
End of Sequence					
HFD1004C TC Seq. Name :HFD1004C (HIFI_R_TM6_Store2) TimeTag Type: N Sub Schedule ID: □					
10		HIFI Redundant serv 6 to store 2		Next Step: END	
		Execute Telecommand AddPktDefStorageSel_E Command Parameter(s) : Store_Id DH003160 N1 DH004160 App_Process_Id DH065160 Type DH066160 N2 DH005160 TC Control Flags : GBM IL DSE --Y -- --- Subsch. ID : 10 Det. descr. : Add Pkt Def. to Storage Selection Def. - SUM(N1+N2) even.	DC154160 2 <dec> 1 <dec> (Def) HifiRed 6 <dec> 0 <dec>	TC	

Nominal TM Pkt to Store Routing File: H_FCP_DHS_1004.xls Author: S. Manganelli	
--	--

Step No.	Time	Activity/Remarks	TC/TLM	Display/ Branch	AIT Comment
		Execute Telecommand <p style="text-align: center;">ReportStorageSelDef</p> <i>Command Parameter(s) :</i> Store_Id DH003160 <i>TC Control Flags :</i> <p style="text-align: center;"> GBM IL DSE --Y -- ---</p> <i>Subsch. ID : 10</i> Det. descr. : Report Storage Selection Definition	DC160160	TC	
		Execute FCP_DHS_1027 to dump the whole BSW routing information (for off-line processing)			
End of Sequence TC Seq. Name : HFD1004B (Store Rout MMB) HFD1004B <i>TimeTag Type: N</i> <i>Sub Schedule ID:</i> □					
11		Delete all current routing settings to ensure consistency		Next Step: 12	
11.1		Delete all current routing from store 129			
		Execute Telecommand <p style="text-align: center;">RemPktDefStorageSel_E</p> <i>Command Parameter(s) :</i> Store_Id DH003160 N1 DH004160 <i>TC Control Flags :</i> <p style="text-align: center;"> GBM IL DSE --Y -- ---</p> <i>Subsch. ID : 10</i> Det. descr. : Remove Pkt Def. from Storage Selection Def. - SUM(N1+N2) even.	DC157160	TC	
11.2		Delete all current routing from store 130			
		Execute Telecommand <p style="text-align: center;">RemPktDefStorageSel_E</p> <i>Command Parameter(s) :</i> Store_Id DH003160 N1 DH004160 <i>TC Control Flags :</i> <p style="text-align: center;"> GBM IL DSE --Y -- ---</p> <i>Subsch. ID : 10</i> Det. descr. : Remove Pkt Def. from Storage Selection Def. - SUM(N1+N2) even.	DC157160	TC	

Nominal TM Pkt to Store Routing
 File: H_FCP_DHS_1004.xls
 Author: S. Manganelli



Step No.	Time	Activity/Remarks	TC/TLM	Display/ Branch	AIT Comment
11.3		Delete all current routing from store 131			
		Execute Telecommand RemPktDefStorageSel_E Command Parameter(s) : Store_Id DH003160 N1 DH004160 TC Control Flags : GBM IL DSE --Y -- --- Subsch. ID : 10 Det. descr. : Remove Pkt Def. from Storage Selection Def. - SUM(N1+N2) even.	DC157160 131 <dec> 0 <dec>	TC	
11.4		Verify Routing Setting			
		Execute Telecommand ReportStorageSelDef Command Parameter(s) : Store_Id DH003160 TC Control Flags : GBM IL DSE --Y -- --- Subsch. ID : 10 Det. descr. : Report Storage Selection Definition	DC160160 129 <dec>	TC	
		Verify Packet Reception Storage Selection Definition Report - Packet Store 0 Packet Mnemonic : StorageSel APID : 16 Type : 15 Subtype : 6 PI1 : PI2 :			
		Verify Packet Telemetry Store-ID DE050160	= 129 <dec>	(None)	
		Verify Packet Telemetry Store-Type DE051160	= Cyclic	(None)	
		Verify Packet Telemetry Storage_Sts DE063160	disabled or enabled	(None)	
		Verify Packet Telemetry Virtual-Chn DE052160	= Dump on VC2	(None)	
		Verify Packet Telemetry N1 DE064160	= 0 <dec>	(None)	
		Execute Telecommand ReportStorageSelDef Command Parameter(s) : Store_Id DH003160 TC Control Flags : GBM IL DSE --Y -- --- Subsch. ID : 10 Det. descr. : Report Storage Selection Definition	DC160160 130 <dec>	TC	

Nominal TM Pkt to Store Routing
 File: H_FCP_DHS_1004.xls
 Author: S. Manganelli



Step No.	Time	Activity/Remarks	TC/TLM	Display/ Branch	AIT Comment
		Verify Packet Reception Storage Selection Definition Report - Packet Store 0 Packet Mnemonic : StorageSel APID : 16 Type : 15 Subtype : 6 PI1 : PI2 :			
		Verify Packet Telemetry Store-ID DE050160	= 130 <dec>	(None)	
		Verify Packet Telemetry Store-Type DE051160	= Cyclic	(None)	
		Verify Packet Telemetry Storage_Sts DE063160	disabled or enabled	(None)	
		Verify Packet Telemetry Virtual-Chn DE052160	= Dump on VC2	(None)	
		Verify Packet Telemetry N1 DE064160	= 0 <dec>	(None)	
		Execute Telecommand ReportStorageSelDef Command Parameter(s) : Store_Id DH003160 TC Control Flags : GBM IL DSE --Y -- --- Subsch. ID : 10 Det. descr. : Report Storage Selection Definition	DC160160 131 <dec>	TC	
		Verify Packet Reception Storage Selection Definition Report - Packet Store 0 Packet Mnemonic : StorageSel APID : 16 Type : 15 Subtype : 6 PI1 : PI2 :			
		Verify Packet Telemetry Store-ID DE050160	= 131 <dec>	(None)	
		Verify Packet Telemetry Store-Type DE051160	= Cyclic	(None)	
		Verify Packet Telemetry Storage_Sts DE063160	disabled or enabled	(None)	
		Verify Packet Telemetry Virtual-Chn DE052160	= Dump on VC3	(None)	
		Verify Packet Telemetry N1 DE064160	= 0 <dec>	(None)	
12		Service 5 to store 129		Next Step: 13	

Nominal TM Pkt to Store Routing
 File: H_FCP_DHS_1004.xls
 Author: S. Manganelli



Step No.	Time	Activity/Remarks	TC/TLM	Display/ Branch	AIT Comment
		Execute Telecommand AddPktDefStorageSel_E Command Parameter(s) : Store_Id DH003160 129 <dec> N1 DH004160 8 <dec> App_Process_Id DH065160 Cdms Type DH066160 5 <dec> N2 DH005160 0 <dec> App_Process_Id DH065160 Acms Type DH066160 5 <dec> N2 DH005160 0 <dec> App_Process_Id DH065160 HifiPri Type DH066160 5 <dec> N2 DH005160 0 <dec> App_Process_Id DH065160 HifiRed Type DH066160 5 <dec> N2 DH005160 0 <dec> App_Process_Id DH065160 PacsPri Type DH066160 5 <dec> N2 DH005160 0 <dec> App_Process_Id DH065160 PacsRed Type DH066160 5 <dec> N2 DH005160 0 <dec> App_Process_Id DH065160 SpirePri Type DH066160 5 <dec> N2 DH005160 0 <dec> App_Process_Id DH065160 SpireRed Type DH066160 5 <dec> N2 DH005160 0 <dec> TC Control Flags : GBM IL DSE --Y -- --- Subsch. ID : 10 Det. descr. : Add Pkt Def. to Storage Selection Def. - SUM(N1+N2) even.	DC154160	TC	
13		Service 1 to store 129		Next Step: 14	
		Execute Telecommand AddPktDefStorageSel_E Command Parameter(s) : Store_Id DH003160 129 <dec> N1 DH004160 8 <dec> App_Process_Id DH065160 Cdms Type DH066160 1 <dec> N2 DH005160 0 <dec> App_Process_Id DH065160 Acms Type DH066160 1 <dec> N2 DH005160 0 <dec> App_Process_Id DH065160 HifiPri Type DH066160 1 <dec> N2 DH005160 0 <dec> App_Process_Id DH065160 HifiRed Type DH066160 1 <dec> N2 DH005160 0 <dec> App_Process_Id DH065160 PacsPri Type DH066160 1 <dec> N2 DH005160 0 <dec> App_Process_Id DH065160 PacsRed Type DH066160 1 <dec> N2 DH005160 0 <dec> App_Process_Id DH065160 SpirePri Type DH066160 1 <dec> N2 DH005160 0 <dec> App_Process_Id DH065160 SpireRed Type DH066160 1 <dec> N2 DH005160 0 <dec>	DC154160	TC	

Nominal TM Pkt to Store Routing File: H_FCP_DHS_1004.xls Author: S. Manganelli	
--	--

Step No.	Time	Activity/Remarks	TC/TLM	Display/ Branch	AIT Comment																																																																																																								
		TC Control Flags : <div style="text-align: right;">GBM IL DSE --Y -- ---</div> Subsch. ID : 10 Det. descr. : Add Pkt Def. to Storage Selection Def. - SUM(N1+N2) even.																																																																																																											
14		Service 8 and 17 to store 129		Next Step: 15																																																																																																									
		Execute Telecommand <div style="text-align: center;">AddPktDefStorageSel_E</div> Command Parameter(s) : <table style="width:100%; border-collapse: collapse;"> <tr> <td style="width:30%;">Store_Id</td> <td style="width:20%;">DH003160</td> <td style="width:20%;">129 <dec></td> <td style="width:30%;"></td> </tr> <tr> <td>N1</td> <td>DH004160</td> <td>8 <dec></td> <td></td> </tr> <tr> <td>App_Process_Id</td> <td>DH065160</td> <td>Cdms</td> <td></td> </tr> <tr> <td>Type</td> <td>DH066160</td> <td>8 <dec></td> <td></td> </tr> <tr> <td>N2</td> <td>DH005160</td> <td>0 <dec></td> <td></td> </tr> <tr> <td>App_Process_Id</td> <td>DH065160</td> <td>Acms</td> <td></td> </tr> <tr> <td>Type</td> <td>DH066160</td> <td>8 <dec></td> <td></td> </tr> <tr> <td>N2</td> <td>DH005160</td> <td>0 <dec></td> <td></td> </tr> <tr> <td>App_Process_Id</td> <td>DH065160</td> <td>HifiPri</td> <td></td> </tr> <tr> <td>Type</td> <td>DH066160</td> <td>8 <dec></td> <td></td> </tr> <tr> <td>N2</td> <td>DH005160</td> <td>0 <dec></td> <td></td> </tr> <tr> <td>App_Process_Id</td> <td>DH065160</td> <td>HifiRed</td> <td></td> </tr> <tr> <td>Type</td> <td>DH066160</td> <td>8 <dec></td> <td></td> </tr> <tr> <td>N2</td> <td>DH005160</td> <td>0 <dec></td> <td></td> </tr> <tr> <td>App_Process_Id</td> <td>DH065160</td> <td>PacsPri</td> <td></td> </tr> <tr> <td>Type</td> <td>DH066160</td> <td>8 <dec></td> <td></td> </tr> <tr> <td>N2</td> <td>DH005160</td> <td>0 <dec></td> <td></td> </tr> <tr> <td>App_Process_Id</td> <td>DH065160</td> <td>PacsRed</td> <td></td> </tr> <tr> <td>Type</td> <td>DH066160</td> <td>8 <dec></td> <td></td> </tr> <tr> <td>N2</td> <td>DH005160</td> <td>0 <dec></td> <td></td> </tr> <tr> <td>App_Process_Id</td> <td>DH065160</td> <td>SpirePri</td> <td></td> </tr> <tr> <td>Type</td> <td>DH066160</td> <td>8 <dec></td> <td></td> </tr> <tr> <td>N2</td> <td>DH005160</td> <td>0 <dec></td> <td></td> </tr> <tr> <td>App_Process_Id</td> <td>DH065160</td> <td>SpireRed</td> <td></td> </tr> <tr> <td>Type</td> <td>DH066160</td> <td>8 <dec></td> <td></td> </tr> <tr> <td>N2</td> <td>DH005160</td> <td>0 <dec></td> <td></td> </tr> </table> TC Control Flags : <div style="text-align: right;">GBM IL DSE --Y -- ---</div> Subsch. ID : 10 Det. descr. : Add Pkt Def. to Storage Selection Def. - SUM(N1+N2) even.	Store_Id	DH003160	129 <dec>		N1	DH004160	8 <dec>		App_Process_Id	DH065160	Cdms		Type	DH066160	8 <dec>		N2	DH005160	0 <dec>		App_Process_Id	DH065160	Acms		Type	DH066160	8 <dec>		N2	DH005160	0 <dec>		App_Process_Id	DH065160	HifiPri		Type	DH066160	8 <dec>		N2	DH005160	0 <dec>		App_Process_Id	DH065160	HifiRed		Type	DH066160	8 <dec>		N2	DH005160	0 <dec>		App_Process_Id	DH065160	PacsPri		Type	DH066160	8 <dec>		N2	DH005160	0 <dec>		App_Process_Id	DH065160	PacsRed		Type	DH066160	8 <dec>		N2	DH005160	0 <dec>		App_Process_Id	DH065160	SpirePri		Type	DH066160	8 <dec>		N2	DH005160	0 <dec>		App_Process_Id	DH065160	SpireRed		Type	DH066160	8 <dec>		N2	DH005160	0 <dec>		DC154160	TC	
Store_Id	DH003160	129 <dec>																																																																																																											
N1	DH004160	8 <dec>																																																																																																											
App_Process_Id	DH065160	Cdms																																																																																																											
Type	DH066160	8 <dec>																																																																																																											
N2	DH005160	0 <dec>																																																																																																											
App_Process_Id	DH065160	Acms																																																																																																											
Type	DH066160	8 <dec>																																																																																																											
N2	DH005160	0 <dec>																																																																																																											
App_Process_Id	DH065160	HifiPri																																																																																																											
Type	DH066160	8 <dec>																																																																																																											
N2	DH005160	0 <dec>																																																																																																											
App_Process_Id	DH065160	HifiRed																																																																																																											
Type	DH066160	8 <dec>																																																																																																											
N2	DH005160	0 <dec>																																																																																																											
App_Process_Id	DH065160	PacsPri																																																																																																											
Type	DH066160	8 <dec>																																																																																																											
N2	DH005160	0 <dec>																																																																																																											
App_Process_Id	DH065160	PacsRed																																																																																																											
Type	DH066160	8 <dec>																																																																																																											
N2	DH005160	0 <dec>																																																																																																											
App_Process_Id	DH065160	SpirePri																																																																																																											
Type	DH066160	8 <dec>																																																																																																											
N2	DH005160	0 <dec>																																																																																																											
App_Process_Id	DH065160	SpireRed																																																																																																											
Type	DH066160	8 <dec>																																																																																																											
N2	DH005160	0 <dec>																																																																																																											
		Execute Telecommand <div style="text-align: center;">AddPktDefStorageSel_E</div> Command Parameter(s) : <table style="width:100%; border-collapse: collapse;"> <tr> <td style="width:30%;">Store_Id</td> <td style="width:20%;">DH003160</td> <td style="width:20%;">129 <dec></td> <td style="width:30%;"></td> </tr> <tr> <td>N1</td> <td>DH004160</td> <td>8 <dec></td> <td></td> </tr> <tr> <td>App_Process_Id</td> <td>DH065160</td> <td>Cdms</td> <td></td> </tr> <tr> <td>Type</td> <td>DH066160</td> <td>17 <dec></td> <td></td> </tr> <tr> <td>N2</td> <td>DH005160</td> <td>0 <dec></td> <td></td> </tr> <tr> <td>App_Process_Id</td> <td>DH065160</td> <td>Acms</td> <td></td> </tr> <tr> <td>Type</td> <td>DH066160</td> <td>17 <dec></td> <td></td> </tr> <tr> <td>N2</td> <td>DH005160</td> <td>0 <dec></td> <td></td> </tr> <tr> <td>App_Process_Id</td> <td>DH065160</td> <td>HifiPri</td> <td></td> </tr> <tr> <td>Type</td> <td>DH066160</td> <td>17 <dec></td> <td></td> </tr> <tr> <td>N2</td> <td>DH005160</td> <td>0 <dec></td> <td></td> </tr> </table>	Store_Id	DH003160	129 <dec>		N1	DH004160	8 <dec>		App_Process_Id	DH065160	Cdms		Type	DH066160	17 <dec>		N2	DH005160	0 <dec>		App_Process_Id	DH065160	Acms		Type	DH066160	17 <dec>		N2	DH005160	0 <dec>		App_Process_Id	DH065160	HifiPri		Type	DH066160	17 <dec>		N2	DH005160	0 <dec>		DC154160	TC																																																													
Store_Id	DH003160	129 <dec>																																																																																																											
N1	DH004160	8 <dec>																																																																																																											
App_Process_Id	DH065160	Cdms																																																																																																											
Type	DH066160	17 <dec>																																																																																																											
N2	DH005160	0 <dec>																																																																																																											
App_Process_Id	DH065160	Acms																																																																																																											
Type	DH066160	17 <dec>																																																																																																											
N2	DH005160	0 <dec>																																																																																																											
App_Process_Id	DH065160	HifiPri																																																																																																											
Type	DH066160	17 <dec>																																																																																																											
N2	DH005160	0 <dec>																																																																																																											

Nominal TM Pkt to Store Routing
 File: H_FCP_DHS_1004.xls
 Author: S. Manganelli



Step No.	Time	Activity/Remarks	TC/TLM	Display/ Branch	AIT Comment
		App_Process_Id DH065160 Type DH066160 N2 DH005160 App_Process_Id DH065160 Type DH066160 N2 DH005160 App_Process_Id DH065160 Type DH066160 N2 DH005160 App_Process_Id DH065160 Type DH066160 N2 DH005160 App_Process_Id DH065160 Type DH066160 N2 DH005160 App_Process_Id DH065160 Type DH066160 N2 DH005160	HifiRed 17 <dec> 0 <dec> PacsPri 17 <dec> 0 <dec> PacsRed 17 <dec> 0 <dec> SpirePri 17 <dec> 0 <dec> SpireRed 17 <dec> 0 <dec>		
		TC Control Flags : GEM IL DSE --Y -- --- Subsch. ID : 10 Det. descr. : Add Pkt Def. to Storage Selection Def. - SUM(N1+N2) even.			
15		Service 15 and 18 to store 130		Next Step: 16	
		Execute Telecommand AddPktDefStorageSel_E DC154160 Command Parameter(s) : Store_Id DH003160 130 <dec> N1 DH004160 2 <dec> App_Process_Id DH065160 Cdms Type DH066160 15 <dec> N2 DH005160 2 <dec> Sub-Type DH067160 6 <dec> Sub-Type DH067160 13 <dec> App_Process_Id DH065160 Cdms Type DH066160 18 <dec> N2 DH005160 2 <dec> Sub-Type DH067160 11 <dec> Sub-Type DH067160 13 <dec>		TC	
		TC Control Flags : GEM IL DSE --Y -- --- Subsch. ID : 10 Det. descr. : Add Pkt Def. to Storage Selection Def. - SUM(N1+N2) even.			
16		Service 6 to store 130		Next Step: 17	
		Execute Telecommand AddPktDefStorageSel_E DC154160 Command Parameter(s) : Store_Id DH003160 130 <dec> N1 DH004160 4 <dec> App_Process_Id DH065160 PacsPri Type DH066160 6 <dec> N2 DH005160 0 <dec> App_Process_Id DH065160 PacsRed Type DH066160 6 <dec> N2 DH005160 0 <dec> App_Process_Id DH065160 SpirePri Type DH066160 6 <dec> N2 DH005160 0 <dec>		TC	

Nominal TM Pkt to Store Routing
 File: H_FCP_DHS_1004.xls
 Author: S. Manganelli



Step No.	Time	Activity/Remarks	TC/TLM	Display/ Branch	AIT Comment
		<p>App_Process_Id DH065160 Type DH066160 N2 DH005160</p> <p>TC Control Flags : GBM IL DSE --Y -- ---</p> <p>Subsch. ID : 10 Det. descr. : Add Pkt Def. to Storage Selection Def. - SUM(N1+N2) even.</p>	<p>SpireRed 6 <dec> 0 <dec></p>		
17		Service 3 setup		Next Step: 18	
17.1		Service 3 essential to store 130			
		<p>Execute Telecommand</p> <p style="text-align: center;">AddPktDefStorageSel_E</p> <p style="text-align: center;">DC154160</p> <p>Command Parameter(s) :</p> <p>Store_Id DH003160 130 <dec> N1 DH004160 8 <dec> App_Process_Id DH065160 Cdms Type DH066160 3 <dec> N2 DH005160 0 <dec> App_Process_Id DH065160 Acms Type DH066160 3 <dec> N2 DH005160 0 <dec> App_Process_Id DH065160 HifiPri Type DH066160 3 <dec> N2 DH005160 0 <dec> App_Process_Id DH065160 HifiRed Type DH066160 3 <dec> N2 DH005160 0 <dec> App_Process_Id DH065160 PacsPri Type DH066160 3 <dec> N2 DH005160 0 <dec> App_Process_Id DH065160 PacsRed Type DH066160 3 <dec> N2 DH005160 0 <dec> App_Process_Id DH065160 SpirePri Type DH066160 3 <dec> N2 DH005160 0 <dec> App_Process_Id DH065160 SpireRed Type DH066160 3 <dec> N2 DH005160 0 <dec></p> <p>TC Control Flags : GBM IL DSE --Y -- ---</p> <p>Subsch. ID : 10 Det. descr. : Add Pkt Def. to Storage Selection Def. - SUM(N1+N2) even.</p>		TC	
17.2		Service 3 Non Ess to store 130			

Nominal TM Pkt to Store Routing
 File: H_FCP_DHS_1004.xls
 Author: S. Manganelli



Step No.	Time	Activity/Remarks	TC/TLM	Display/ Branch	AIT Comment
		Execute Telecommand AddPktDefStorageSel_E Command Parameter(s) : Store_Id DH003160 130 <dec> N1 DH004160 8 <dec> App_Process_Id DH065160 CdmsDiagHk Type DH066160 3 <dec> N2 DH005160 0 <dec> App_Process_Id DH065160 AcmsDiagHk Type DH066160 3 <dec> N2 DH005160 0 <dec> App_Process_Id DH065160 HifiPriDiagHk Type DH066160 3 <dec> N2 DH005160 0 <dec> App_Process_Id DH065160 HifiRedDiagHk Type DH066160 3 <dec> N2 DH005160 0 <dec> App_Process_Id DH065160 PacsPriDiagHk Type DH066160 3 <dec> N2 DH005160 0 <dec> App_Process_Id DH065160 PacsRedDiagHk Type DH066160 3 <dec> N2 DH005160 0 <dec> App_Process_Id DH065160 SpirePriDiagHk Type DH066160 3 <dec> N2 DH005160 0 <dec> App_Process_Id DH065160 SpireRedDiagHk Type DH066160 3 <dec> N2 DH005160 0 <dec> TC Control Flags : GBM IL DSE --Y -- --- Subsch. ID : 10 Det. descr. : Add Pkt Def. to Storage Selection Def. - SUM(N1+N2) even.	DC154160	TC	
17.3		Remove service 3 useless combinations			
		Execute Telecommand RemPktDefStorageSel_E Command Parameter(s) : Store_Id DH003160 130 <dec> N1 DH004160 8 <dec> App_Process_Id DH065160 Cdms Type DH066160 3 <dec> N2 DH005160 1 <dec> (Def) Sub-Type DH067160 26 <dec> App_Process_Id DH065160 Acms Type DH066160 3 <dec> N2 DH005160 1 <dec> (Def) Sub-Type DH067160 26 <dec> App_Process_Id DH065160 HifiPri Type DH066160 3 <dec> N2 DH005160 1 <dec> (Def) Sub-Type DH067160 26 <dec> App_Process_Id DH065160 HifiRed Type DH066160 3 <dec> N2 DH005160 1 <dec> (Def) Sub-Type DH067160 26 <dec> App_Process_Id DH065160 PacsPri Type DH066160 3 <dec> N2 DH005160 1 <dec> (Def) Sub-Type DH067160 26 <dec> App_Process_Id DH065160 PacsRed Type DH066160 3 <dec> N2 DH005160 1 <dec> (Def) Sub-Type DH067160 26 <dec>	DC157160	TC	

Nominal TM Pkt to Store Routing
 File: H_FCP_DHS_1004.xls
 Author: S. Manganelli



Step No.	Time	Activity/Remarks	TC/TLM	Display/ Branch	AIT Comment
		<p>App_Process_Id DH065160 SpirePri Type DH066160 3 <dec> N2 DH005160 1 <dec> (Def) Sub-Type DH067160 26 <dec> App_Process_Id DH065160 SpireRed Type DH066160 3 <dec> N2 DH005160 1 <dec> (Def) Sub-Type DH067160 26 <dec></p> <p>TC Control Flags : GBM IL DSE --Y -- ---</p> <p>Subsch. ID : 10 Det. descr. : Remove Pkt Def. from Storage Selection Def. - SUM(N1+N2) even.</p>			
		<p>Execute Telecommand RemPktDefStorageSel_E DC157160</p> <p>Command Parameter(s) :</p> <p>Store_Id DH003160 130 <dec> N1 DH004160 8 <dec> App_Process_Id DH065160 CdmsDiagHk Type DH066160 3 <dec> N2 DH005160 2 <dec> Sub-Type DH067160 10 <dec> Sub-Type DH067160 12 <dec> App_Process_Id DH065160 AcmsDiagHk Type DH066160 3 <dec> N2 DH005160 2 <dec> Sub-Type DH067160 10 <dec> Sub-Type DH067160 12 <dec> App_Process_Id DH065160 HifiPriDiagHk Type DH066160 3 <dec> N2 DH005160 2 <dec> Sub-Type DH067160 10 <dec> Sub-Type DH067160 12 <dec> App_Process_Id DH065160 HifiRedDiagHk Type DH066160 3 <dec> N2 DH005160 2 <dec> Sub-Type DH067160 10 <dec> Sub-Type DH067160 12 <dec> App_Process_Id DH065160 FacsPriDiagHk Type DH066160 3 <dec> N2 DH005160 2 <dec> Sub-Type DH067160 10 <dec> Sub-Type DH067160 12 <dec> App_Process_Id DH065160 SpirePriDiagHk Type DH066160 3 <dec> N2 DH005160 2 <dec> Sub-Type DH067160 10 <dec> Sub-Type DH067160 12 <dec> App_Process_Id DH065160 SpireRedDiagHk Type DH066160 3 <dec> N2 DH005160 2 <dec> Sub-Type DH067160 10 <dec> Sub-Type DH067160 12 <dec></p> <p>TC Control Flags : GBM IL DSE --Y -- ---</p> <p>Subsch. ID : 10 Det. descr. : Remove Pkt Def. from Storage Selection Def. - SUM(N1+N2) even.</p>		TC	
18		Store 131 - Science Setup		Next Step: 19	

Nominal TM Pkt to Store Routing
 File: H_FCP_DHS_1004.xls
 Author: S. Manganelli



Step No.	Time	Activity/Remarks	TC/TLM	Display/ Branch	AIT Comment
18.1		Pacs Diag Science to store 131			
		Execute Telecommand AddPktDefStorageSel_E Command Parameter(s) : Store_Id DH003160 131 <dec> N1 DH004160 2 <dec> App_Process_Id DH065160 PacsPriSciDiag Type DH066160 21 <dec> N2 DH005160 1 <dec> (Def) Sub-Type DH067160 3 <dec> App_Process_Id DH065160 PacsRedSciDiag Type DH066160 21 <dec> N2 DH005160 1 <dec> (Def) Sub-Type DH067160 3 <dec> TC Control Flags : GBM IL DSE --Y -- --- Subsch. ID : 10 Det. descr. : Add Pkt Def. to Storage Selection Def. - SUM(N1+N2) even.	DC154160	TC	
18.2		All science TM for other Science APIDs to store 131			
		Execute Telecommand AddPktDefStorageSel_E Command Parameter(s) : Store_Id DH003160 131 <dec> N1 DH004160 7 <dec> App_Process_Id DH065160 HifiSci0 Type DH066160 21 <dec> N2 DH005160 0 <dec> App_Process_Id DH065160 HifiSci1 Type DH066160 21 <dec> N2 DH005160 0 <dec> App_Process_Id DH065160 HifiSci2 Type DH066160 21 <dec> N2 DH005160 0 <dec> App_Process_Id DH065160 HifiSci3 Type DH066160 21 <dec> N2 DH005160 0 <dec> App_Process_Id DH065160 PacsPriSci0 Type DH066160 21 <dec> N2 DH005160 0 <dec> App_Process_Id DH065160 PacsRedSci0 Type DH066160 21 <dec> N2 DH005160 0 <dec> App_Process_Id DH065160 PacsPriSci1 Type DH066160 21 <dec> N2 DH005160 0 <dec> TC Control Flags : GBM IL DSE --Y -- --- Subsch. ID : 10 Det. descr. : Add Pkt Def. to Storage Selection Def. - SUM(N1+N2) even.	DC154160	TC	

Nominal TM Pkt to Store Routing
 File: H_FCP_DHS_1004.xls
 Author: S. Manganelli



Step No.	Time	Activity/Remarks	TC/TLM	Display/ Branch	AIT Comment
		Execute Telecommand AddPktDefStorageSel_E Command Parameter(s) : Store_Id DH003160 131 <dec> N1 DH004160 7 <dec> App_Process_Id DH065160 PacsRedSci1 Type DH066160 21 <dec> N2 DH005160 0 <dec> App_Process_Id DH065160 SpirePriSci0 Type DH066160 21 <dec> N2 DH005160 0 <dec> App_Process_Id DH065160 SpireRedSci0 Type DH066160 21 <dec> N2 DH005160 0 <dec> App_Process_Id DH065160 SpirePriSci1 Type DH066160 21 <dec> N2 DH005160 0 <dec> App_Process_Id DH065160 SpireRedSci1 Type DH066160 21 <dec> N2 DH005160 0 <dec> App_Process_Id DH065160 SpirePriSci2 Type DH066160 21 <dec> N2 DH005160 0 <dec> App_Process_Id DH065160 SpireRedSci2 Type DH066160 21 <dec> N2 DH005160 0 <dec> TC Control Flags : GBM IL DSE --Y -- --- Subsch. ID : 10 Det. descr. : Add Pkt Def. to Storage Selection Def. - SUM(N1+N2) even.	DC154160	TC	
18.3		Remove diag science from non diag PACS APIDs			
		Execute Telecommand RemPktDefStorageSel_E Command Parameter(s) : Store_Id DH003160 131 <dec> N1 DH004160 4 <dec> App_Process_Id DH065160 PacsPriSci0 Type DH066160 21 <dec> N2 DH005160 1 <dec> (Def) Sub-Type DH067160 3 <dec> App_Process_Id DH065160 PacsRedSci0 Type DH066160 21 <dec> N2 DH005160 1 <dec> (Def) Sub-Type DH067160 3 <dec> App_Process_Id DH065160 PacsPriSci1 Type DH066160 21 <dec> N2 DH005160 1 <dec> (Def) Sub-Type DH067160 3 <dec> App_Process_Id DH065160 PacsRedSci1 Type DH066160 21 <dec> N2 DH005160 1 <dec> (Def) Sub-Type DH067160 3 <dec> TC Control Flags : GBM IL DSE --Y -- --- Subsch. ID : 10 Det. descr. : Remove Pkt Def. from Storage Selection Def. - SUM(N1+N2) even.	DC157160	TC	

Nominal TM Pkt to Store Routing
 File: H_FCP_DHS_1004.xls
 Author: S. Manganelli



Step No.	Time	Activity/Remarks	TC/TLM	Display/ Branch	AIT Comment
18.4		Verify Routing Setting			
		Execute Telecommand ReportStorageSelDef Command Parameter(s) : Store_Id DH003160 TC Control Flags : GBM IL DSE --Y -- --- Subsch. ID : 10 Det. descr. : Report Storage Selection Definition	DC160160 129 <dec>	TC	
		Verify Packet Reception Storage Selection Definition Report - Packet Store 0 Packet Mnemonic : StorageSel APID : 16 Type : 15 Subtype : 6 PI1 : PI2 :			
		Verify Packet Telemetry Store-ID DE050160	= 129 <dec>	(None)	
		Verify Packet Telemetry Store-Type DE051160	= Cyclic	(None)	
		Verify Packet Telemetry Storage_Sts DE063160	disabled or enabled	(None)	
		Verify Packet Telemetry Virtual-Chn DE052160	= Dump on VC2	(None)	
		Verify Packet Telemetry N1 DE064160	As commanded	(None)	
		Execute Telecommand ReportStorageSelDef Command Parameter(s) : Store_Id DH003160 TC Control Flags : GBM IL DSE --Y -- --- Subsch. ID : 10 Det. descr. : Report Storage Selection Definition	DC160160 130 <dec>	TC	
		Verify Packet Reception Storage Selection Definition Report - Packet Store 0 Packet Mnemonic : StorageSel APID : 16 Type : 15 Subtype : 6 PI1 : PI2 :			
		Verify Packet Telemetry Store-ID DE050160	= 130 <dec>	(None)	
		Verify Packet Telemetry Store-Type DE051160	= Cyclic	(None)	
		Verify Packet Telemetry Storage_Sts DE063160	disabled or enabled	(None)	
		Verify Packet Telemetry Virtual-Chn DE052160	= Dump on VC2	(None)	

Nominal TM Pkt to Store Routing
 File: H_FCP_DHS_1004.xls
 Author: S. Manganelli



Step No.	Time	Activity/Remarks	TC/TLM	Display/ Branch	AIT Comment
		Verify Packet Telemetry N1 DE064160	As commanded	(None)	
		Execute Telecommand ReportStorageSelDef Command Parameter(s) : Store_Id DH003160 TC Control Flags : GBM IL DSE --Y -- --- Subsch. ID : 10 Det. descr. : Report Storage Selection Definition	DC160160 131 <dec>	TC	
		Verify Packet Reception Storage Selection Definition Report - Packet Store 0 Packet Mnemonic : StorageSel APID : 16 Type : 15 Subtype : 6 PI1 : PI2 :			
		Verify Packet Telemetry Store-ID DE050160	= 131 <dec>	(None)	
		Verify Packet Telemetry Store-Type DE051160	= Cyclic	(None)	
		Verify Packet Telemetry Storage_Sts DE063160	disabled or enabled	(None)	
		Verify Packet Telemetry Virtual-Chn DE052160	= Dump on VC3	(None)	
		Verify Packet Telemetry N1 DE064160	As commanded	(None)	
End of Sequence					
HFD1004D		TC Seq. Name :HFD1004D (HIFI_R_TM6_Store130) TimeTag Type: Sub Schedule ID: □			
19		HIFI Redundant serv 6 to store 130		Next Step: END	
		Execute Telecommand AddPktDefStorageSel_E Command Parameter(s) : Store_Id DH003160 N1 DH004160 App_Process_Id DH065160 Type DH066160 N2 DH005160 TC Control Flags : GBM IL DSE --Y -- --- Subsch. ID : 10 Det. descr. : Add Pkt Def. to Storage Selection Def. - SUM(N1+N2) even.	DC154160 130 <dec> 1 <dec> (Def) HifiRed 6 <dec> 0 <dec>	TC	

Nominal TM Pkt to Store Routing File: H_FCP_DHS_1004.xls Author: S. Manganelli	  
--	--

Step No.	Time	Activity/Remarks	TC/TLM	Display/ Branch	AIT Comment
		Execute Telecommand <div style="text-align: right; margin-left: 100px;">ReportStorageSelDef</div> <i>Command Parameter(s) :</i> <div style="margin-left: 100px;">Store_Id DH003160</div> <i>TC Control Flags :</i> <div style="margin-left: 100px;">GBM IL DSE</div> <div style="margin-left: 100px;">--Y -- ---</div> <i>Subsch. ID : 10</i> <i>Det. descr. : Report Storage Selection Definition</i>	DC160160	TC	
		Execute FCP_DHS_1027 to dump the whole BSW routing information (for off-line processing)			
End of Sequence					
End of Procedure					