

Update CRS ARAD thresholds
File: H_FCP_AOC_4C01.xls
Author: dsalt-hp



Procedure Summary

Objectives

The objective of this Herschel ACMS procedure is to update the CRS ARDR thresholds in RM.

The procedure involves the following activities:

- determine updates to CRS ARDR thresholds, derived by FD
- disable RMB or RMA
- uplink specific TPF (ARA) defined by FD containing these updated RMB or RMA values
- enable RMB or RMA
- confirm updates via TC for RMB or RMA status details

The CRS is used for the rate detection part of the ARAD. The analogue signal (voltage) is compared to a lower and higher threshold.

After CRS calibration (bias and scale factor), the threshold must be adjusted. This requires to disable each RM (one at a time) to update the thresholds.

Summary of Constraints

1. Some pre-requisites are assumed, namely:
 - # The CRS Bias for both read-out channels have been determined;
 - # The CRS Scale factor/misalignment for both read-out channels have been determined.
2. The processed threshold values are subject to a range check, the values being allowed to change by a certain amount w.r.t the a priori determined values.
3. Only one RM can be disabled at a time.

Spacecraft Configuration

Start of Procedure

CRS bias and scale factor/misalignment processed.

End of Procedure

Updated CRS ARAD thresholds.

Reference File(s)

Input Command Sequences

Output Command Sequences

HFA4C01A
AEARA_00

Referenced Displays

ANDs GRDs SLDs
Status : Version 2 - Unchanged
Last Checkin: 06/08/08

Update CRS ARAD thresholds
 File: H_FCP_AOC_4C01.xls
 Author: dsalt-hp



ZAAM2999
 ZAA07999

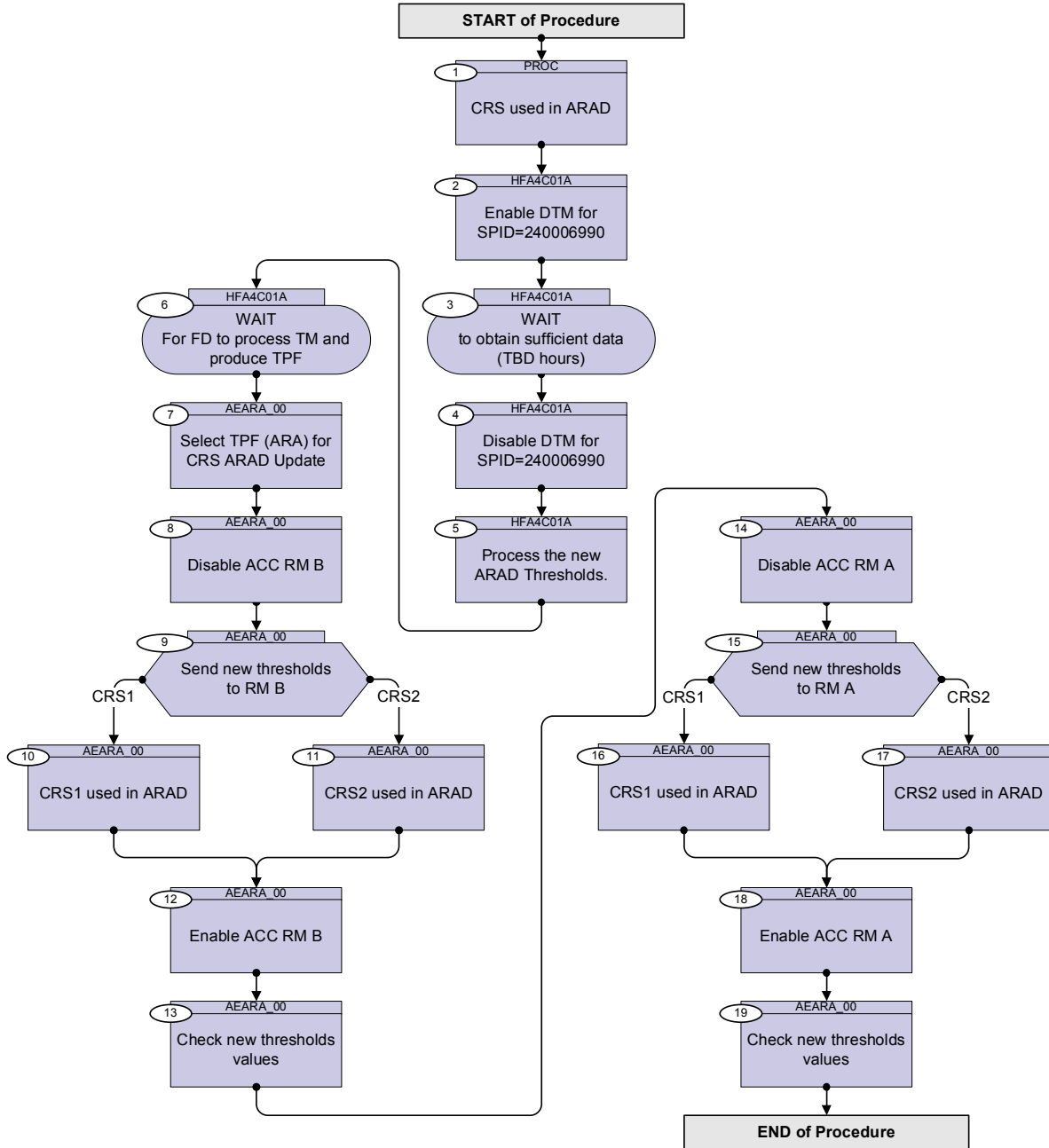
Configuration Control Information

DATE	FOP ISSUE	VERSION	MODIFICATION DESCRIPTION	AUTHOR	SPR REF
03/08/08	1	1	Created	dsalt-hp	
06/08/08	2	2	TCs in Step 4 updated to use correct PID values (=301, was =51) for this DTM instance	dsalt-hp	

Update CRS ARAD thresholds
 File: H_FCP_AOC_4C01.xls
 Author: dsalt-hp



Procedure Flowchart Overview



Update CRS ARAD thresholds
 File: H_FCP_AOC_4C01.xls
 Author: dsalt-hp



Step No.	Time	Activity/Remarks	TC/TLM	Display/ Branch
Beginning of Procedure				
PROC Procedure Properties				
SSID :				
1		CRS used in ARAD		Next Step: 2
1.1		CRS1 alarm enabled ?		<input type="checkbox"/>
		Currently the calibration data is missing, though 1 is the value for 'Enabled'		
		Verify Telemetry <div style="text-align: center;">AENSET CRS1 AEW5B109</div>	= 1 <dec>	AND=ZAAM2999
1.2		CRS2 alarm enabled ?		<input type="checkbox"/>
		Currently the calibration data is missing, though 1 is the value for 'Enabled'		
		Verify Telemetry <div style="text-align: center;">AENSET CRS2 AEW5C109</div>	= 1 <dec>	AND=ZAAM2999
HFA4C01A CRS cal DTM				
SSID :				
2		Enable DTM for SPID=240006990		Next Step: 3
2.1		Command DTM definition		<input type="checkbox"/>
		Execute Telecommand <div style="text-align: center;">TC32P_CRS_CALB_STR12 XC056990</div>		
		TC Control Flags : <div style="text-align: center;">GBM IL DSE ---Y -- ---</div>		
		SSID : 30		
2.2		Report DTM definition		<input type="checkbox"/>

Update CRS ARAD thresholds
 File: H_FCP_AOC_4C01.xls
 Author: dsalt-hp



Step No.	Time	Activity/Remarks	TC/TLM	Display/ Branch
		Execute Telecommand <p style="text-align: right;">Report Diag Report Def</p> Command Parameter(s) : Number of pkts AH3NP109 HK Packet ID AH3PK109 TC Control Flags : GBM IL DSE --Y -- --- SSID : 20	AC311109 1 <dec> (Def) 301 <dec>	
2.3		Enable TM generation		<input type="checkbox"/>
		Execute Telecommand <p style="text-align: right;">EnableTmGen</p> Command Parameter(s) : N AH017070 Sub-Type AH019070 Packet-ID AH020070 TC Control Flags : GBM IL DSE --Y -- --- SSID : 20	AC900070 1 <dec> (Def) 26 <dec> 301 <dec>	
2.4		Verify OBDB DTM Enable		<input type="checkbox"/>
		Verify Packet Reception <p style="text-align: right;">DTM with Herschel OBDB data4</p> Packet Details: APID: 514 Type: 3 Subtype: 26 PI1: 4504 PI2:	A3DH0BDB4109 514 3 26 4504	
		to be updated DTM for SPID=240006990		
3		WAIT to obtain sufficient data (TBD hours)		Next Step: 4
		N.B. Data gathering period is TBD (FD to define, but expected to be on the order of several hours)		
4		Disable DTM for SPID=240006990		Next Step: 5
4.1		Disable TM generation		<input type="checkbox"/>

Update CRS ARAD thresholds
 File: H_FCP_AOC_4C01.xls
 Author: dsalt-hp



Step No.	Time	Activity/Remarks	TC/TLM	Display/ Branch
		Execute Telecommand <p style="text-align: right;">DisableTmGen</p> Command Parameter(s) : N AH017070 Sub-Type AH019070 Packet-ID AH020070 TC Control Flags : GBM IL DSE --Y -- --- SSID : 20	AC902070 1 <dec> (Def) 26 <dec> 301 <dec>	
4.2		Clear DTM		□
		Execute Telecommand <p style="text-align: right;">Clear Diagnostic Report</p> Command Parameter(s) : Number of pkts AH3NP109 HK Packet ID AH3PK109 TC Control Flags : GBM IL DSE --Y -- --- SSID : 20	AC034109 1 <dec> (Def) 301 <dec>	
5		Process the new ARAD Thresholds.		Next Step: 6
		Given the CRS upper limit and bias, Ground to process the <u>upper</u> and <u>lower</u> threshold values (x,y,z) for the CRS which is used in the ARAD and for both read-out channels. Ground to transform the upper limits from [rad/s] to [hex].		
6		WAIT For FD to process TM and produce TPF		Next Step: 7
		N.B. Data processing and TPF generation period is TBD (FD to define, but expected to be on the order of several hours)		

Update CRS ARAD thresholds
 File: H_FCP_AOC_4C01.xls
 Author: dsalt-hp



Step No.	Time	Activity/Remarks	TC/TLM	Display/ Branch
		AEARA_00 CRS ARAD update		
		Sequence Parameter(s) : AradUpdUppCrsX CRS1_1U <dec> AradUpdLowCrsX CRS1_1L <dec> AradUpdUppCrsYZ CRS1_2U <dec> AradUpdLowCrsYZ CRS1_2L <dec> AradUpdUppCrsYZ CRS1_3U <dec> AradUpdLowCrsYZ CRS1_3L <dec> AradUpdUppCrsX CRS2_1U <dec> AradUpdLowCrsX CRS2_1L <dec> AradUpdUppCrsYZ CRS2_2U <dec> AradUpdLowCrsYZ CRS2_2L <dec> AradUpdUppCrsYZ CRS2_3U <dec>		
		AradUpdLowCrsYZ CRS2_3L <dec> SSID : 20		
7		Select TPF (ARA) for CRS ARAD Update		Next Step: 8
		Check with Flight Dynamics the exact name of the TPF instance to be uplinked		
8		Disable ACC RM B		Next Step: 9
		Execute Telecommand Ext_ACC_RM_B_Disable TC Control Flags : GBM IL DSE --Y -- -- SSID : 20	DCA25170	
		Verify Telemetry RMB_fromTTR-RMA AEE93050 = DISABLED		AND=ZAA07999
		Verify Telemetry RMB_fromTTR-RMB AEE94050 = DISABLED		AND=ZAA07999
9		Send new thresholds to RM B		Next Step: CRS1 10 CRS2 11
		NOTE: Two types of activity are foreseen: 1. see steps/TM for CRS1 thresholds 2. see steps/TM for CRS2 thresholds		
10		CRS1 used in ARAD		Next Step: 12
10.1		Load Thresholds X		□

Update CRS ARAD thresholds
 File: H_FCP_AOC_4C01.xls
 Author: dsalt-hp



Step No.	Time	Activity/Remarks	TC/TLM	Display/ Branch
		Execute Telecommand ARADupdrMB CRS1rateTh X Command Parameter(s) : AradUpd DF86Cmd AH8A1001 Enable 86 AradUPd DD86Cmd AH8A2001 Enable 86 AradUpdUppCrsX AHFA4001 CRS1_1U AradUpdLowCrsX AHFA7001 CRS1_1L TC Control Flags : GBM IL DSE --Y -- --- SSID : 20	ACZ5F109	
		Execute Telecommand Fire Update ARAD param Command Parameter(s) : FireFun DF86Cmd AH8F1001 Enable 86 FireFun DD86Cmd AH8F2001 Enable 86 TC Control Flags : GBM IL DSE --Y -- --- SSID : 20	ACZ3M109	
10.2		Load Thresholds Y		<input type="checkbox"/>
		Execute Telecommand ARADupdrMB CRS1rateTh Y Command Parameter(s) : AradUpd DF86Cmd AH8A1001 Enable 86 AradUPd DD86Cmd AH8A2001 Enable 86 AradUpdUppCrsYZ AHFA5001 CRS1_2U AradUpdLowCrsYZ AHFA8001 CRS1_2L TC Control Flags : GBM IL DSE --Y -- --- SSID : 20	ACZ6F109	
		Execute Telecommand Fire Update ARAD param Command Parameter(s) : FireFun DF86Cmd AH8F1001 Enable 86 FireFun DD86Cmd AH8F2001 Enable 86 TC Control Flags : GBM IL DSE --Y -- --- SSID : 20	ACZ3M109	
10.3		Load Thresholds Z		<input type="checkbox"/>

Update CRS ARAD thresholds
 File: H_FCP_AOC_4C01.xls
 Author: dsalt-hp



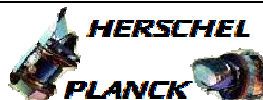
Step No.	Time	Activity/Remarks	TC/TLM	Display/ Branch
		Execute Telecommand <p style="text-align: center;">ARADupdRMB CRS1rateTh Z</p> Command Parameter(s) : AradUpd DF86Cmd AH8A1001 Enable 86 AradUPd DD86Cmd AH8A2001 Enable 86 AradUpdUppCrsYZ AHFA5001 CRS1_3U AradUpdLowCrsYZ AHFA8001 CRS1_3L TC Control Flags : <p style="text-align: right;">GBM IL DSE --Y -- ---</p> SSID : 20	ACZ7F109	
		Execute Telecommand <p style="text-align: center;">Fire Update ARAD param</p> Command Parameter(s) : FireFun DF86Cmd AH8F1001 Enable 86 FireFun DD86Cmd AH8F2001 Enable 86 TC Control Flags : <p style="text-align: right;">GBM IL DSE --Y -- ---</p> SSID : 20	ACZ3M109	
11		CRS2 used in ARAD		Next Step: 12
11.1		Load Thresholds X		<input type="checkbox"/>
		Execute Telecommand <p style="text-align: center;">ARADupdRMB CRS2rateTh X</p> Command Parameter(s) : AradUpd DF86Cmd AH8A1001 Enable 86 AradUPd DD86Cmd AH8A2001 Enable 86 AradUpdUppCrsX AHFA4001 CRS2_1U AradUpdLowCrsX AHFA7001 CRS2_1L TC Control Flags : <p style="text-align: right;">GBM IL DSE --Y -- ---</p> SSID : 20	ACZ8F109	
		Execute Telecommand <p style="text-align: center;">Fire Update ARAD param</p> Command Parameter(s) : FireFun DF86Cmd AH8F1001 Enable 86 FireFun DD86Cmd AH8F2001 Enable 86 TC Control Flags : <p style="text-align: right;">GBM IL DSE --Y -- ---</p> SSID : 20	ACZ3M109	

Update CRS ARAD thresholds
 File: H_FCP_AOC_4C01.xls
 Author: dsalt-hp



Step No.	Time	Activity/Remarks	TC/TLM	Display/ Branch
11.2		Load Thresholds Y		<input type="checkbox"/>
		Execute Telecommand <p style="text-align: right;">ARADupdRMB CRS2rateTh Y</p> Command Parameter(s) : AradUpd DF86Cmd AH8A1001 Enable 86 AradUPd DD86Cmd AH8A2001 Enable 86 AradUpdUppCrsYZ AHFA5001 CRS2_2U AradUpdLowCrsYZ AHFA8001 CRS2_2L TC Control Flags : <p style="text-align: right;">GBM IL DSE --Y -- ---</p> SSID : 20	ACZ9F109	
		Execute Telecommand <p style="text-align: right;">Fire Update ARAD param</p> Command Parameter(s) : FireFun DF86Cmd AH8F1001 Enable 86 FireFun DD86Cmd AH8F2001 Enable 86 TC Control Flags : <p style="text-align: right;">GBM IL DSE --Y -- ---</p> SSID : 20	ACZ3M109	
11.3		Load Thresholds Z		<input type="checkbox"/>
		Execute Telecommand <p style="text-align: right;">ARADupdRMB CRS2rateTh Z</p> Command Parameter(s) : AradUpd DF86Cmd AH8A1001 Enable 86 AradUPd DD86Cmd AH8A2001 Enable 86 AradUpdUppCrsYZ AHFA5001 CRS2_3U AradUpdLowCrsYZ AHFA8001 CRS2_3L TC Control Flags : <p style="text-align: right;">GBM IL DSE --Y -- ---</p> SSID : 20	ACZ1G109	
		Execute Telecommand <p style="text-align: right;">Fire Update ARAD param</p> Command Parameter(s) : FireFun DF86Cmd AH8F1001 Enable 86 FireFun DD86Cmd AH8F2001 Enable 86 TC Control Flags : <p style="text-align: right;">GBM IL DSE --Y -- ---</p> SSID : 20	ACZ3M109	

Update CRS ARAD thresholds
 File: H_FCP_AOC_4C01.xls
 Author: dsalt-hp



Step No.	Time	Activity/Remarks	TC/TLM	Display/ Branch
12		Enable ACC RM B		Next Step: 13
		Execute Telecommand Ext_ACC_RM_B_Enable TC Control Flags : SSID : 20	DCA24170 GBM IL DSE --Y -- ---	
		Verify Telemetry RMB_fromTTR-RMA AEE93050	= ENABLED	AND=ZAA07999
		Verify Telemetry RMB_fromTTR-RMB AEE94050	= ENABLED	AND=ZAA07999
13		Check new thresholds values		Next Step: 14
		Execute Telecommand Get RM Status Command Parameter(s) : RMStat DF86Cmd AH841001 RMStat DD86Cmd AH842001 RMStatus RM ID AHF8S001 TC Control Flags : SSID : 20	ACFS1001 Enable 86 Enable 86 RM-B GBM IL DSE --Y -- ---	
		Check that all values have been correctly updated		
		Verify Packet Reception TM 8-6 for RM Status parametrized Packet Details: APID: 512 Type: 8 Subtype: 6 PI1: 41600 PI2: 1	A86_RMStatus	
		Verify Packet Telemetry (Pkt = A86_RMStatus) CRS1-XUpLimit AEW3A109		AND=ZAAM0999
		Verify Packet Telemetry (Pkt = A86_RMStatus) CRS1-XLowLimit AEW3B109		AND=ZAAM0999
		Verify Packet Telemetry (Pkt = A86_RMStatus) CRS1-YUpLimit AEW3C109		AND=ZAAM0999
		Verify Packet Telemetry (Pkt = A86_RMStatus) CRS1-YLowLimit AEW3D109		AND=ZAAM0999
		Verify Packet Telemetry (Pkt = A86_RMStatus) CRS1-ZUpLimit AEW3E109		AND=ZAAM0999

Update CRS ARAD thresholds
 File: H_FCP_AOC_4C01.xls
 Author: dsalt-hp



Step No.	Time	Activity/Remarks	TC/TLM	Display/ Branch
		Verify Packet Telemetry (Pkt = A86_RMStatus) CRS1-ZLowLimit AEW3F109		AND=ZAAM0999
		Verify Packet Telemetry (Pkt = A86_RMStatus) CRS2-XUpLimit AEW3G109		AND=ZAAM0999
		Verify Packet Telemetry (Pkt = A86_RMStatus) CRS2-XLowLimit AEW3H109		AND=ZAAM0999
		Verify Packet Telemetry (Pkt = A86_RMStatus) CRS2-YUpLimit AEW3J109		AND=ZAAM0999
		Verify Packet Telemetry (Pkt = A86_RMStatus) CRS2-YLowLimit AEW3K109		AND=ZAAM0999
		Verify Packet Telemetry (Pkt = A86_RMStatus) CRS2-ZUpLimit AEW3L109		AND=ZAAM0999
		Verify Packet Telemetry (Pkt = A86_RMStatus) CRS2-ZLowLimit AEW3M109		AND=ZAAM0999
14		<i>Disable ACC RM A</i>		Next Step: 15
		Execute Telecommand Ext_ACC_RM_A_Disable <i>TC Control Flags :</i> GBM IL DSE --Y -- --- <i>SSID : 20</i>	DCA22170	
		Verify Telemetry RMA_fromTTR-RMA AEE91050	= DISABLED	AND=ZAA07999
		Verify Telemetry RMA_fromTTR-RMB AEE92050	= DISABLED	AND=ZAA07999
15		<i>Send new thresholds to RM A</i>		Next Step: CRS1 16 CRS2 17
		NOTE: Two types of activity are foreseen: 1. see steps/TM for CRS1 thresholds 2. see steps/TM for CRS2 thresholds		
16		<i>CRS1 used in ARAD</i>		Next Step: 18
16.1		<i>Load Thresholds X</i>		□

Update CRS ARAD thresholds
 File: H_FCP_AOC_4C01.xls
 Author: dsalt-hp



Step No.	Time	Activity/Remarks	TC/TLM	Display/ Branch
		Execute Telecommand <p style="text-align: center;">ARADupdrMA CRS1rateTh X</p> Command Parameter(s) : AradUpd DF86Cmd AH8A1001 Enable 86 AradUPd DD86Cmd AH8A2001 Enable 86 AradUpdUppCrsX AHFA4001 CRS1_1U AradUpdLowCrsX AHFA7001 CRS1_1L TC Control Flags : <p style="text-align: right;">GBM IL DSE --Y -- ---</p> SSID : 20	ACZ5E109	
		Execute Telecommand <p style="text-align: center;">Fire Update ARAD param</p> Command Parameter(s) : FireFun DF86Cmd AH8F1001 Enable 86 FireFun DD86Cmd AH8F2001 Enable 86 TC Control Flags : <p style="text-align: right;">GBM IL DSE --Y -- ---</p> SSID : 20	ACZ3M109	
16.2		Load Thresholds Y		<input type="checkbox"/>
		Execute Telecommand <p style="text-align: center;">ARADupdrMA CRS1rateTh Y</p> Command Parameter(s) : AradUpd DF86Cmd AH8A1001 Enable 86 AradUPd DD86Cmd AH8A2001 Enable 86 AradUpdUppCrsYZ AHFA5001 CRS1_2U AradUpdLowCrsYZ AHFA8001 CRS1_2L TC Control Flags : <p style="text-align: right;">GBM IL DSE --Y -- ---</p> SSID : 20	ACZ6E109	
		Execute Telecommand <p style="text-align: center;">Fire Update ARAD param</p> Command Parameter(s) : FireFun DF86Cmd AH8F1001 Enable 86 FireFun DD86Cmd AH8F2001 Enable 86 TC Control Flags : <p style="text-align: right;">GBM IL DSE --Y -- ---</p> SSID : 20	ACZ3M109	
16.3		Load Thresholds Z		<input type="checkbox"/>

Update CRS ARAD thresholds
 File: H_FCP_AOC_4C01.xls
 Author: dsalt-hp



Step No.	Time	Activity/Remarks	TC/TLM	Display/ Branch
		Execute Telecommand <p style="text-align: center;">ARADupdRMA CRS1rateTh Z</p> Command Parameter(s) : AradUpd DF86Cmd AH8A1001 Enable 86 AradUPd DD86Cmd AH8A2001 Enable 86 AradUpdUppCrsYZ AHFA5001 CRS1_3U AradUpdLowCrsYZ AHFA8001 CRS1_3L TC Control Flags : <p style="text-align: right;">GBM IL DSE --Y -- ---</p> SSID : 20	ACZ7E109	
		Execute Telecommand <p style="text-align: center;">Fire Update ARAD param</p> Command Parameter(s) : FireFun DF86Cmd AH8F1001 Enable 86 FireFun DD86Cmd AH8F2001 Enable 86 TC Control Flags : <p style="text-align: right;">GBM IL DSE --Y -- ---</p> SSID : 20	ACZ3M109	
17		CRS2 used in ARAD		Next Step: 18
17.1		Load Thresholds X		<input type="checkbox"/>
		Execute Telecommand <p style="text-align: center;">ARADupdRMA CRS2rateTh X</p> Command Parameter(s) : AradUpd DF86Cmd AH8A1001 Enable 86 AradUPd DD86Cmd AH8A2001 Enable 86 AradUpdUppCrsX AHFA4001 CRS2_1U AradUpdLowCrsX AHFA7001 CRS2_1L TC Control Flags : <p style="text-align: right;">GBM IL DSE --Y -- ---</p> SSID : 20	ACZ8E109	
		Execute Telecommand <p style="text-align: center;">Fire Update ARAD param</p> Command Parameter(s) : FireFun DF86Cmd AH8F1001 Enable 86 FireFun DD86Cmd AH8F2001 Enable 86 TC Control Flags : <p style="text-align: right;">GBM IL DSE --Y -- ---</p> SSID : 20	ACZ3M109	

Update CRS ARAD thresholds
 File: H_FCP_AOC_4C01.xls
 Author: dsalt-hp



Step No.	Time	Activity/Remarks	TC/TLM	Display/ Branch
17.2		Load Thresholds Y		<input type="checkbox"/>
		Execute Telecommand ARADupdRMA CRS2rateTh Y Command Parameter(s) : AradUpd DF86Cmd AH8A1001 Enable 86 AradUPd DD86Cmd AH8A2001 Enable 86 AradUpdUppCrsYZ AHFA5001 CRS2_2U AradUpdLowCrsYZ AHFA8001 CRS2_2L TC Control Flags : GBM IL DSE --Y -- --- SSID : 20	ACZ9E109	
		Execute Telecommand Fire Update ARAD param Command Parameter(s) : FireFun DF86Cmd AH8F1001 Enable 86 FireFun DD86Cmd AH8F2001 Enable 86 TC Control Flags : GBM IL DSE --Y -- --- SSID : 20	ACZ3M109	
17.3		Load Thresholds Z		<input type="checkbox"/>
		Execute Telecommand ARADupdRMA CRS2rateTh Z Command Parameter(s) : AradUpd DF86Cmd AH8A1001 Enable 86 AradUPd DD86Cmd AH8A2001 Enable 86 AradUpdUppCrsYZ AHFA5001 CRS2_3U AradUpdLowCrsYZ AHFA8001 CRS2_3L TC Control Flags : GBM IL DSE --Y -- --- SSID : 20	ACZ1F109	
		Execute Telecommand Fire Update ARAD param Command Parameter(s) : FireFun DF86Cmd AH8F1001 Enable 86 FireFun DD86Cmd AH8F2001 Enable 86 TC Control Flags : GBM IL DSE --Y -- --- SSID : 20	ACZ3M109	

Update CRS ARAD thresholds
 File: H_FCP_AOC_4C01.xls
 Author: dsalt-hp



Step No.	Time	Activity/Remarks	TC/TLM	Display/ Branch
18		Enable ACC RM A		Next Step: 19
		Execute Telecommand Ext_ACC_RM_A_Enable TC Control Flags : SSID : 20	DCA21170 GBM IL DSE --Y -- ---	
		Verify Telemetry RMA_fromTTR-RMA AEE91050	= ENABLED	AND=ZAA07999
		Verify Telemetry RMA_fromTTR-RMB AEE92050	= ENABLED	AND=ZAA07999
19		Check new thresholds values		Next Step: END
		Execute Telecommand Get RM Status Command Parameter(s) : RMStat DF86Cmd AH841001 RMStat DD86Cmd AH842001 RMStatus RM ID AHF8S001 TC Control Flags : SSID : 20	ACFS1001 Enable 86 Enable 86 RM-A GBM IL DSE --Y -- ---	
		Check that all values have been correctly updated		
		Verify Packet Reception TM 8-6 for RM Status parametrized Packet Details:	A86_RMStatus APID: 512 Type: 8 Subtype: 6 PI1: 41600 PI2: 1	
		Verify Packet Telemetry (Pkt = A86_RMStatus) CRS1-XUpLimit AEW3A109		AND=ZAAM0999
		Verify Packet Telemetry (Pkt = A86_RMStatus) CRS1-XLowLimit AEW3B109		AND=ZAAM0999
		Verify Packet Telemetry (Pkt = A86_RMStatus) CRS1-YUpLimit AEW3C109		AND=ZAAM0999
		Verify Packet Telemetry (Pkt = A86_RMStatus) CRS1-YLowLimit AEW3D109		AND=ZAAM0999
		Verify Packet Telemetry (Pkt = A86_RMStatus) CRS1-ZUpLimit AEW3E109		AND=ZAAM0999

Update CRS ARAD thresholds
 File: H_FCP_AOC_4C01.xls
 Author: dsalt-hp



Step No.	Time	Activity/Remarks	TC/TLM	Display/ Branch
		Verify Packet Telemetry (Pkt = A86_RMStatus)		
		CRS1-ZLowLimit AEW3F109		AND=ZAAM0999
		Verify Packet Telemetry (Pkt = A86_RMStatus)		
		CRS2-XUpLimit AEW3G109		AND=ZAAM0999
		Verify Packet Telemetry (Pkt = A86_RMStatus)		
		CRS2-XLowLimit AEW3H109		AND=ZAAM0999
		Verify Packet Telemetry (Pkt = A86_RMStatus)		
		CRS2-YUpLimit AEW3J109		AND=ZAAM0999
		Verify Packet Telemetry (Pkt = A86_RMStatus)		
		CRS2-YLowLimit AEW3K109		AND=ZAAM0999
		Verify Packet Telemetry (Pkt = A86_RMStatus)		
		CRS2-ZUpLimit AEW3L109		AND=ZAAM0999
		Verify Packet Telemetry (Pkt = A86_RMStatus)		
		CRS2-ZLowLimit AEW3M109		AND=ZAAM0999
End of Procedure				