

Switch TM Enc Subsampling ON/OFF
 File: H_CRP_TTC_TMES.xls
 Author: E. Picallo



Procedure Summary

Objectives

This procedure describes the steps needed to Switch TM Encoder Subsampling ON or OFF.

Summary of Constraints

The Switch OFF/ON TM Encoder Subsampling is performed through ASW TC(8,4,115,17/18); thus the status of the ASW function "TTC Management" has to be "running".

Switching TM Subsampling to ON or OFF configures the filtering of TM(3,25) on VC0 by requesting BSW to set the specified subsampling status.

Spacecraft Configuration

Start of Procedure

CDMU in default configuration;
 TM Encoder Subsampling set to ON or OFF.

End of Procedure

CDMU in default configuration;
 TM Encoder Subsampling updated.

Reference File(s)

Input Command Sequences

Output Command Sequences

HRRTMES1
 HRRTMES2

Referenced Displays

ANDs	GRDs	SLDs
ZAZ7J999		(None)

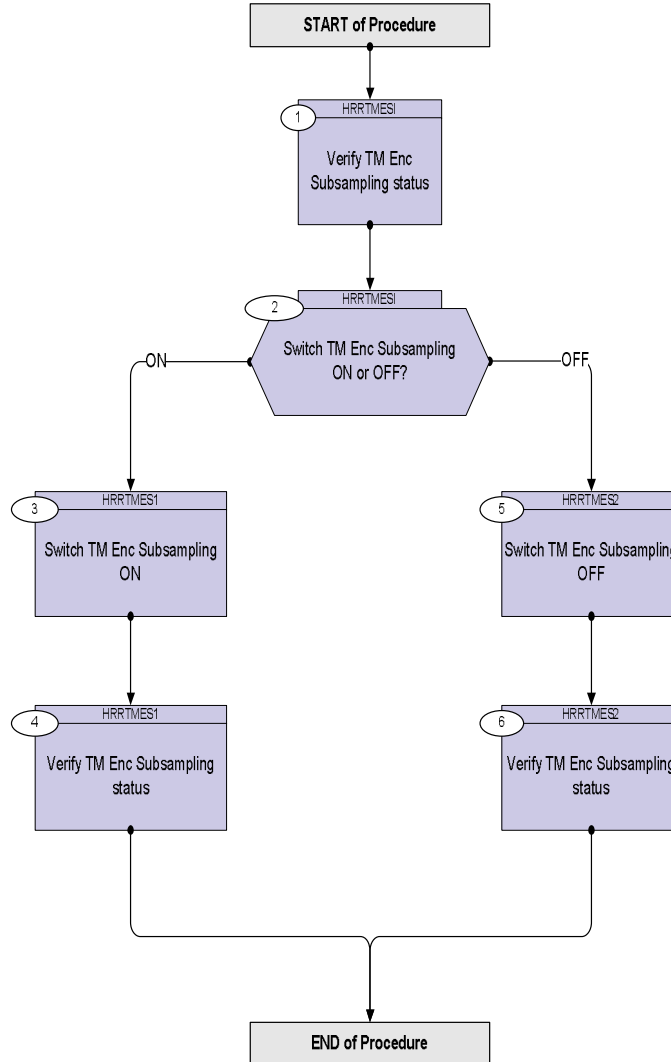
Configuration Control Information

DATE	FOP ISSUE	VERSION	MODIFICATION DESCRIPTION	AUTHOR	SPR REF
16/09/08	2	1	Created	E. Picallo	

Switch TM Enc Subsampling ON/OFF
File: H_CRP_TTC_TMES.xls
Author: E. Picallo



Procedure Flowchart Overview



Switch TM Enc Subsampling ON/OFF
 File: H_CRP_TTC_TMES.xls
 Author: E. Picallo



Step No.	Time	Activity/Remarks	TC/TLM	Display/ Branch
Beginning of Procedure				
TC Seq. Name : HRRTMES1 (TM Subsampling Init) Switch TM Subsampling ON/OFF TimeTag Type: N Sub Schedule ID: <input type="checkbox"/>				
1		Verify TM Enc Subsampling status		Next Step: 2
		Verify Telemetry BSW_TM_MODE DEMF0160		AND=ZAZ7J999
2		Switch TM Enc Subsampling ON or OFF?		Next Step: ON 3 OFF 5
TC Seq. Name : HRRTMES1 (TM Subsampling ON) Switch TM Subsampling ON TimeTag Type: N Sub Schedule ID: <input type="checkbox"/>				
3		Switch TM Enc Subsampling ON		Next Step: 4
		Execute Telecommand TtcSwitchTmSubsamplOn TC Control Flags : Subsch. ID : 10 Det. descr. : TTC: Switch TM Subsampling On TC(8,4,115,18)	DC04F170	
4		Verify TM Enc Subsampling status		Next Step: END
		Verify Telemetry BSW_TM_MODE DEMF0160	= OnlyFilteredVc	AND=ZAZ7J999
TC Seq. Name : HRRTMES2 (TM Subsampling OFF) TimeTag Type: N Sub Schedule ID: <input type="checkbox"/>				
5		Switch TM Enc Subsampling OFF		Next Step: 6

Switch TM Enc Subsampling ON/OFF
 File: H_CRP_TTC_TMES.xls
 Author: E. Picallo



Step No.	Time	Activity/Remarks	TC/TLM	Display/ Branch
		Execute Telecommand TtcSwitchTmSubsamlOff <i>TC Control Flags :</i> Subsch. ID : 10 Det. descr. : TTC: Switch TM Subsampling Off TC(8,4,115,17) <div style="text-align: right;">GBM IL DSE --Y -- --</div>	DC03F170	
6		Verify TM Enc Subsampling status		Next Step: END
		Verify Telemetry <div style="text-align: center;">BSW_TM_MODE DEMF0160</div>	= AllVc	AND=ZAZ7J999
End of Procedure				