

Start/Stop Thermal Control function
File: H_CRP_TCS_MANG.xls
Author: E. Picallo



Procedure Summary

Objectives

This procedure describes the steps needed to switch ON or OFF the ASW function "Thermal Control".

Summary of Constraints

Default status of the function: "Running".

Note that after completion of the CDMU ASW initialisation the function is active, though only really starts after a predefined delay (currently 120 seconds, defined by the constant HPSDB_TC_START_OFFSET).

During the start delay period the function is enabled, and it can receive and execute commands, but the thermal monitoring and commanding is only started after the start delay has elapsed.

The start delay can be bypassed by the following command sequence:

- TC(8,4,114,3) Arm stopping;
- TC(8,2,114) Stop function;
- TC(8,1,114) Start function.

When the function is stopped, it does not accept any other telecommands than the:

- Start Function TC(8,1,114);
- Report Function Status TC(8,5,114).

Before starting the function it is recommended to check the contents of the TCT. As the TCT contents cannot be modified while the function is stopped, it might be necessary to modify it immediately after starting the function.

Spacecraft Configuration

Start of Procedure

CDMU in default configuration, that is:

- PM A or B ON (nominally A)
- TM Encoder/OBT A or B active (nominally A)
- RM A and B enabled
- MM A and B ON

End of Procedure

CDMU in default configuration, that is:

- PM A or B ON (nominally A)
- TM Encoder/OBT A or B active (nominally A)
- RM A and B enabled
- MM A and B ON

Reference File(s)

Input Command Sequences

Output Command Sequences

HRTMANG1
HRTMANG2

Start/Stop Thermal Control function
 File: H_CRP_TCS_MANG.xls
 Author: E. Picallo



Referenced Displays

ANDs **GRDs** **SLDs**
 ZAZ28999

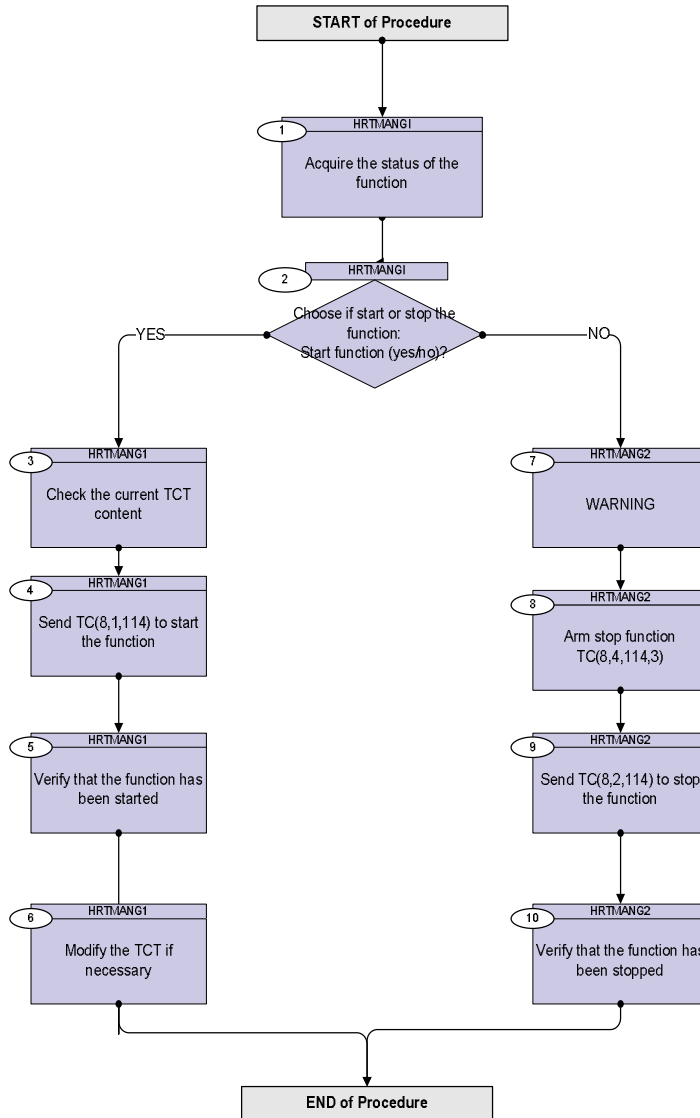
Configuration Control Information

DATE	FOP ISSUE	VERSION	MODIFICATION DESCRIPTION	AUTHOR	SPR REF
24/07/08	1	1	Created	E. Picallo	
08/12/08	2	2	Modify TCT(if necessary) after function start added	E. Picallo	
18/03/09	2.2	2.01	Validation : Minor correction (call to H_CRP_TCS_TCTupdated)	E. Picallo	

Start/Stop Thermal Control function
 File: H_CRP_TCS_MANG.xls
 Author: E. Picallo



Procedure Flowchart Overview



Start/Stop Thermal Control function
 File: H_CRP_TCS_MANG.xls
 Author: E. Picallo



Step No.	Time	Activity/Remarks	TC/TLM	Display/ Branch
Beginning of Procedure				
TC Seq. Name :HRTMANG1 (Start/stop ThCtrl Mg) Start/Stop Thermal Control function TimeTag Type: N Sub Schedule ID: <input type="checkbox"/>				
1		Acquire the status of the function		Next Step: 2
		Verify Telemetry <div style="text-align: center;">ThermSts DEL07170</div>		AND=ZAZ28999
		The default status of the function is "Running".		
2		Choose if start or stop the function: Start function (yes/no)?		Next Step: YES 3 NO 7
		Warning: If the function is running sending the TC "Start Thermal Control" will cause a TC Acceptance failure TM(1,2) "Function Already Started".		
		Warning: If the function is Stopped sending the TC "Stop Thermal Control" will cause a TC Acceptance failure TM(1,2) "Function Already Stopped".		
TC Seq. Name :HRTMANG1 (Start ThCtrl Mgmt) TimeTag Type: N Sub Schedule ID: <input type="checkbox"/>				
3		Check the current TCT content		Next Step: 4
		Execute Procedure: H_FCP_TCS_REPO Thermal Control Status Report		
		When the Thermal Control function is stopped one can dump the contents of the TCT though cannot modify it. This is only possible while the function is running. It is therefore advisable to first check the current settings in the TCT table and change it if necessary once the function has been started.		

Start/Stop Thermal Control function
 File: H_CRP_TCS_MANG.xls
 Author: E. Picallo



Step No.	Time	Activity/Remarks	TC/TLM	Display/ Branch
4		Send TC(8,1,114) to start the function		Next Step: 5
		Start Thermal Control telecommand is used for switching on the function. This will allow all enabled loops to be processed.		
		Execute Telecommand <div style="text-align: right;">StartThCtrlManag</div> TC Control Flags : <div style="text-align: right;">GBM IL DSE --Y -- --</div> Subsch. ID : 10 Det. descr. : Start Thermal Control Management TC(8,1,114)	DCN09170	
5		Verify that the function has been started		Next Step: 6
		Verify Telemetry <div style="text-align: center;">ThermSts DEL07170</div> <div style="text-align: center;">= Running</div>		AND=ZAZ28999
6		Modify the TCT if necessary		Next Step: END
		Execute Procedure: H_CRP_TCS_TCT Thermal Control Table maintenance		
TC Seq. Name :HRTMANG2 (Stop ThCtrl Mgmt) TimeTag Type: Sub Schedule ID: <input type="checkbox"/>				
7		WARNING		Next Step: 8
		<p style="color: red;">Stopping the Thermal function will result in no more onboard active thermal control.</p> <p style="color: red;">The thermal related FDIR events will still be raised though it will be up to the Ground to switch ON/OFF the Heater lines when outside the thermal limits.</p>		
8		Arm stop function TC(8,4,114,3)		Next Step: 9

Start/Stop Thermal Control function
 File: H_CRP_TCS_MANG.xls
 Author: E. Picallo



Step No.	Time	Activity/Remarks	TC/TLM	Display/ Branch
		<p>The telecommand Stop Thermal Control, used for switching off the function, is considered critical, and therefore must be armed before use with a TC(8,4,114,3).</p> <p>When the function is stopped, it does not accept any other telecommands than the Start Function and Report Function Status TCs.</p>		
		Execute Telecommand <p style="text-align: right;">ArmStopThCtrl</p> <p>TC Control Flags :</p> <p style="text-align: right;">GBM IL DSE --Y -- --</p> <p>Subsch. ID : 10 Det. descr. : TEMPLATE Arm Stop Thermal Control TC(8,4,114,3)</p>	DC95F170	
9		Send TC(8,2,114) to stop the function		Next Step: 10
		Execute Telecommand <p style="text-align: right;">StopThCtrlManag</p> <p>TC Control Flags :</p> <p style="text-align: right;">GBM IL DSE --Y -- --</p> <p>Subsch. ID : 10 Det. descr. : Stop Thermal Control Management TC(8,2,114)</p>	DCN10170	
10		Verify that the function has been stopped		Next Step: END
		Verify Telemetry <p style="text-align: right;">ThermSts DEL07170</p> <p style="text-align: right;">= Stopped</p>		AND=ZAZ28999
		<p>WARNING Stopping the Thermal Control Function is a slow operation. The Function will be stopped, when the heaters related to all enabled loops are disabled (heaters of disabled loops being already switched off), this occurs when their respective control periods are elapsed.</p>		
End of Procedure				