

Switch OFF HCS of HPS18
 File: H_CRP_TCS_18H0.xls
 Author: E. Picallo



Procedure Summary

Objectives

This procedure describes the steps needed to switch OFF a selected Heater Control Switch (HCS) of HPS18.

The location units of the HCSs belonging to HPS18 are the following:

- HCS1: Decontamination 9
- HCS2: XPND2
- HCS3: FCV A1B
- HCS4: FCV C2B
- HCS5: RCS piping
- HCS6: XPND1

Nominally the temperature control, and therefore the HCSs ON/OFF commanding, is managed by the CDMU ASW and it is driven through the Thermal Control Table (TCT).

Summary of Constraints

The selected HCS is switched OFF through ASW TC(8,4,112,3); thus the status of the ASW function "PCDU Management" has to be "running".

Spacecraft Configuration

Start of Procedure

CDMU in default configuration;
 HPS18 ON;
 HCS ON.

End of Procedure

CDMU in default configuration;
 HPS18 ON;
 HCS switched OFF.

Reference File(s)

Input Command Sequences

Output Command Sequences

HRT18H0

Referenced Displays

ANDs GRDs SLDs
 WAHT3584

Configuration Control Information

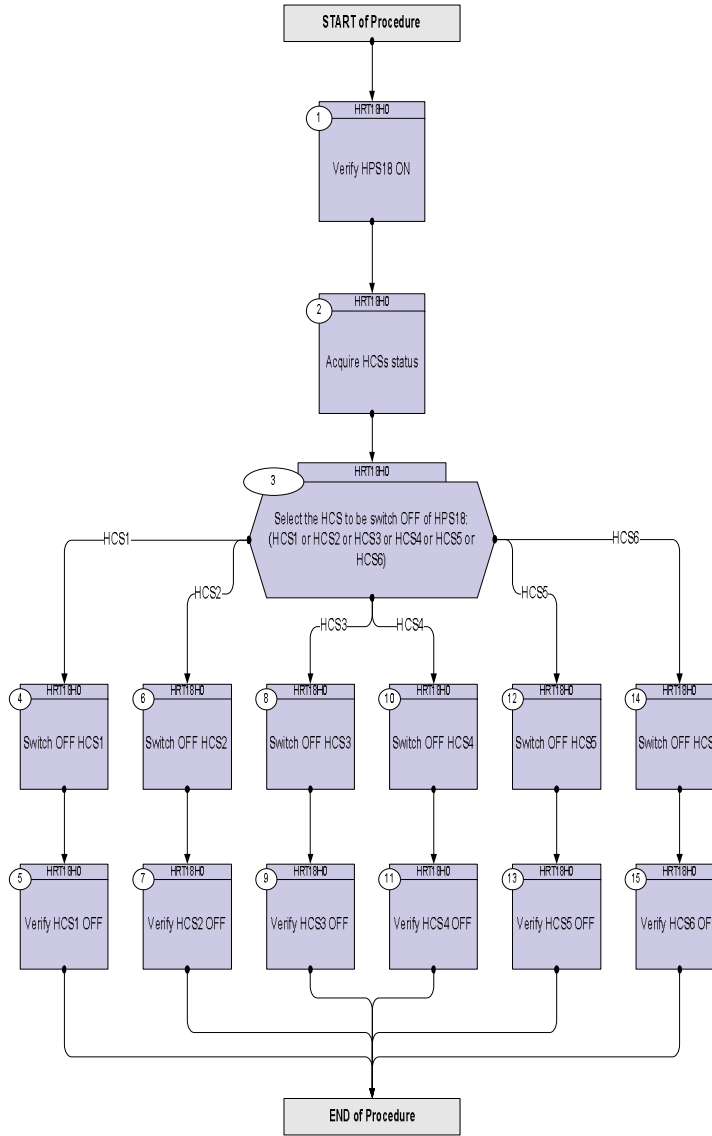
DATE	FOP ISSUE	VERSION	MODIFICATION DESCRIPTION	AUTHOR	SPR REF
17/02/09	2.1	1	Created	E. Picallo	

Status : Version 1 - Unchanged
 Last Checkin: 17/02/09

Switch OFF HCS of HPS18
 File: H_CRP_TCS_18H0.xls
 Author: E. Picallo



Procedure Flowchart Overview



Switch OFF HCS of HPS18
 File: H_CRP_TCS_18H0.xls
 Author: E. Picallo



Step No.	Time	Activity/Remarks	TC/TLM	Display/ Branch
Beginning of Procedure				
TC Seq. Name :HRT18H0 (Switch OFF HCS HPS18)				
TimeTag Type: N				
Sub Schedule ID:				
□				
1		Verify HPS18 ON		Next Step: 2
		Verify Telemetry GRP18_HPS_STS WMA2G565 = ON		AND=WAHT3584
2		Acquire HCSs status		Next Step: 3
		Verify Telemetry Decon9_G18H1_S WMA1A565		AND=WAHT3584
		Verify Telemetry XPND2_G18H2_S WMA1B565		AND=WAHT3584
		Verify Telemetry FcvA1B_G18H3_S WMA1C565		AND=WAHT3584
		Verify Telemetry FcvC2B_G18H4_S WMA1D565		AND=WAHT3584
		Verify Telemetry RCSpipG18H5_S WMA1E565		AND=WAHT3584
		Verify Telemetry XPND1_G18H6_S WMA1F565		AND=WAHT3584
3		Select the HCS to be switch OFF of HPS18: (HCS1 or HCS2 or HCS3 or HCS4 or HCS5 or HCS6)		Next Step: HCS1 4 HCS2 6 HCS3 8 HCS4 10 HCS5 12 HCS6 14
4		Switch OFF HCS1		Next Step: 5
		Execute Telecommand SwOff_Decont_9_G18H1	DCE47170	
		TC Control Flags : GBM IL DSE --Y -- ---		
		Subsch. ID : 10 Det. descr. : PCDU:TC(8,4,112,3) switch Off Decontamination 9 Group 18 HCS 1		

Switch OFF HCS of HPS18
 File: H_CRP_TCS_18H0.xls
 Author: E. Picallo



Step No.	Time	Activity/Remarks	TC/TLM	Display/ Branch
5		Verify HCS1 OFF		Next Step: END
		Verify Telemetry Decon9_G18H1_s WMA1A565	= OFF	AND=WAHT3584
6		Switch OFF HCS2		Next Step: 7
		Execute Telecommand SwOff_XPND2_G18H2 TC Control Flags : Subsch. ID : 10 Det. descr. : PCDU:TC(8,4,112,3) switch Off XPND2 Group 18 HCS 2	DCE48170	
		GBM IL DSE --Y -- --		
7		Verify HCS2 OFF		Next Step: END
		Verify Telemetry XPND2_G18H2_s WMA1B565	= OFF	AND=WAHT3584
8		Switch OFF HCS3		Next Step: 9
		Execute Telecommand SwOff_FCV_A1B_G18H3 TC Control Flags : Subsch. ID : 10 Det. descr. : PCDU:TC(8,4,112,3) switch Off FCV A1B Group 18 HCS 3	DCE49170	
		GBM IL DSE --Y -- --		
9		Verify HCS3 OFF		Next Step: END
		Verify Telemetry FcvA1B_G18H3_s WMA1C565	= OFF	AND=WAHT3584
10		Switch OFF HCS4		Next Step: 11
		Execute Telecommand SwOff_FCV_C2B_G18H4 TC Control Flags : Subsch. ID : 10 Det. descr. : PCDU:TC(8,4,112,3) switch Off FCV C2B Group 18 HCS 4	DCE50170	
		GBM IL DSE --Y -- --		

Switch OFF HCS of HPS18
 File: H_CRP_TCS_18H0.xls
 Author: E. Picallo



Step No.	Time	Activity/Remarks	TC/TLM	Display/ Branch
11		Verify HCS4 OFF		Next Step: END
		Verify Telemetry FcvC2B_G18H4_S WMA1D565	= OFF	AND=WAHT3584
12		Switch OFF HCS5		Next Step: 13
		Execute Telecommand SwOff_RCSpip_G18H5 TC Control Flags : Subsch. ID : 10 Det. descr. : PCDU:TC(8,4,112,3) switch Off RCS piping Group 18 HCS 5	DCE51170 GBM IL DSE --Y -- --	
13		Verify HCS5 OFF		Next Step: END
		Verify Telemetry RCSpipG18H5_S WMA1E565	= OFF	AND=WAHT3584
14		Switch OFF HCS6		Next Step: 15
		Execute Telecommand SwOff_XPND1_G18H6 TC Control Flags : Subsch. ID : 10 Det. descr. : PCDU:TC(8,4,112,3) switch Off XPND1 Group 18 HCS 6	DCE52170 GBM IL DSE --Y -- --	
15		Verify HCS6 OFF		Next Step: END
		Verify Telemetry XPND1_G18H6_S WMA1F565	= OFF	AND=WAHT3584
End of Procedure				