

Switch ON HCS of HPS17
 File: H_CRP_TCS_17H1.xls
 Author: E. Picallo



Procedure Summary

Objectives

This procedure describes the steps needed to switch ON a selected Heater Control Switch (HCS) of HPS17.

The location units of the HCSs belonging to HPS17 are the following:

- HCS1: Decontamination 4
- HCS2: FCV C1B
- HCS3: FCV A2B
- HCS4: FCV C4B
- HCS5: FPDPU/FPSPU
- HCS6: Tanks

Nominally the temperature control, and therefore the HCSs ON/OFF commanding, is managed by the CDMU ASW and it is driven through the Thermal Control Table (TCT).

Summary of Constraints

The selected HCS is switched ON through ASW TC(8,4,112,5); thus the status of the ASW function "PCDU Management" has to be "running".

Spacecraft Configuration

Start of Procedure

CDMU in default configuration;
 HPS17 ON;
 HCS OFF.

End of Procedure

CDMU in default configuration;
 HPS17 ON;
 HCS switched ON.

Reference File(s)

Input Command Sequences

Output Command Sequences

HRT17H1

Referenced Displays

ANDs GRDs SLDs
 WAHT3584

Configuration Control Information

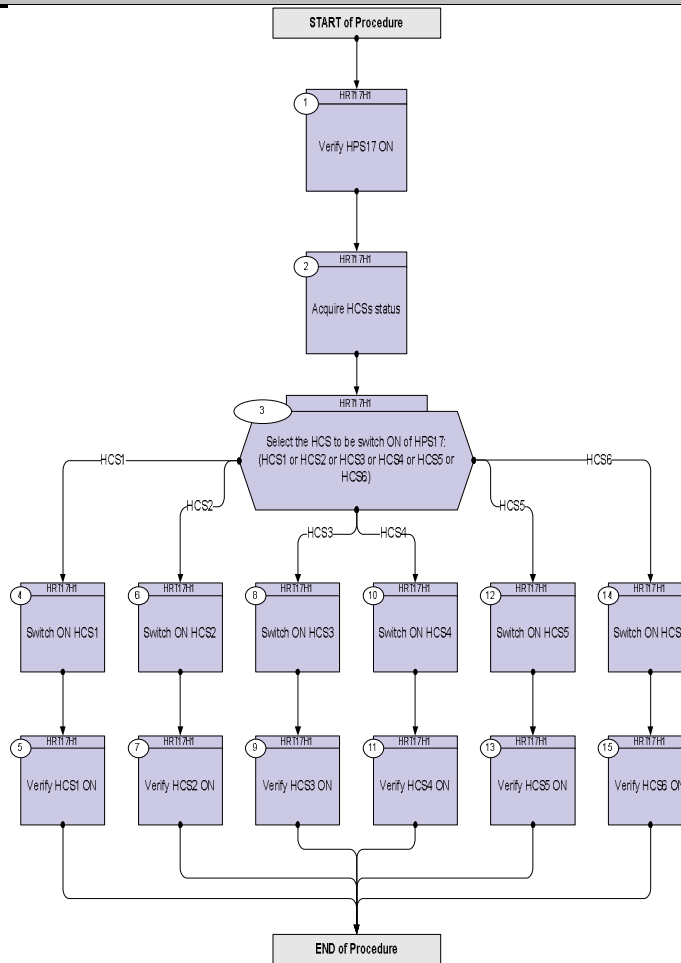
DATE	FOP ISSUE	VERSION	MODIFICATION DESCRIPTION	AUTHOR	SPR REF
17/02/09	2.1	1	Created	E. Picallo	

Status : Version 1 - Unchanged
 Last Checkin: 17/02/09

Switch ON HCS of HPS17
 File: H_CRP_TCS_17H1.xls
 Author: E. Picallo



Procedure Flowchart Overview



Switch ON HCS of HPS17
 File: H_CRP_TCS_17H1.xls
 Author: E. Picallo



Step No.	Time	Activity/Remarks	TC/TLM	Display/ Branch
Beginning of Procedure				
TC Seq. Name : HRT17H1 (Switch ON HCS HPS17) TimeTag Type: N Sub Schedule ID: <input type="checkbox"/>				
1		Verify HPS17 ON		Next Step: 2
		Verify Telemetry GRP17_HPS_STS WM92H565 = ON		AND=WAHT3584
2		Acquire HCSs status		Next Step: 3
		Verify Telemetry Decon4_G17H1_S WM91G565		AND=WAHT3584
		Verify Telemetry FcvC1B_G17H2_S WM91H565		AND=WAHT3584
		Verify Telemetry FcvA2B_G17H3_S WM91J565		AND=WAHT3584
		Verify Telemetry FcvC4B_G17H4_S WM91K565		AND=WAHT3584
		Verify Telemetry FpdFps_G17H5_S WM91L565		AND=WAHT3584
		Verify Telemetry tanks_G17H6_S WM91M565		AND=WAHT3584
3		Select the HCS to be switch ON of HPS17: (HCS1 or HCS2 or HCS3 or HCS4 or HCS5 or HCS6)		Next Step: HCS1 4 HCS2 6 HCS3 8 HCS4 10 HCS5 12 HCS6 14
4		Switch ON HCS1		Next Step: 5
		Execute Telecommand SwOn_Decont_4_G17H1 TC Control Flags : GBM IL DSE --Y -- -- Subsch. ID : 10 Det. descr. : PCDU:TC(8,4,112,5) switch On Decontamination 4 Group 17 HCS 1	DCD15170	

Switch ON HCS of HPS17
 File: H_CRP_TCS_17H1.xls
 Author: E. Picallo



Step No.	Time	Activity/Remarks	TC/TLM	Display/ Branch
5		Verify HCS1 ON		Next Step: END
		Verify Telemetry Decon4_G17H1_S WM91G565	= ON	AND=WAHT3584
6		Switch ON HCS2		Next Step: 7
		Execute Telecommand SwOn_FCV_C1B_G17H2 TC Control Flags : Subsch. ID : 10 Det. descr. : PCDU:TC(8,4,112,5) switch On FCV C1B Group 17 HCS 2	DCD16170	
		GBM IL DSE --Y -- ---		
7		Verify HCS2 ON		Next Step: END
		Verify Telemetry FcvC1B_G17H2_S WM91H565	= ON	AND=WAHT3584
8		Switch ON HCS3		Next Step: 9
		Execute Telecommand SwOn_FCV_A2B_G17H3 TC Control Flags : Subsch. ID : 10 Det. descr. : PCDU:TC(8,4,112,5) switch On FCV A2B Group 17 HCS 3	DCD17170	
		GBM IL DSE --Y -- ---		
9		Verify HCS3 ON		Next Step: END
		Verify Telemetry FcvA2B_G17H3_S WM91J565	= ON	AND=WAHT3584
10		Switch ON HCS4		Next Step: 11
		Execute Telecommand SwOn_FCV_C4B_G17H4 TC Control Flags : Subsch. ID : 10 Det. descr. : PCDU:TC(8,4,112,5) switch On FCV C4B Group 17 HCS 4	DCD18170	
		GBM IL DSE --Y -- ---		

Switch ON HCS of HPS17
 File: H_CRP_TCS_17H1.xls
 Author: E. Picallo



Step No.	Time	Activity/Remarks	TC/TLM	Display/ Branch
11		Verify HCS4 ON		Next Step: END
		Verify Telemetry FcvC4B_G17H4_S WM91K565	= ON	AND=WAHT3584
12		Switch ON HCS5		Next Step: 13
		Execute Telecommand SwOn_FPDPUPFSPU_G17H5 TC Control Flags : Subsch. ID : 10 Det. descr. : PCDU:TC(8,4,112,5) switch On FPDPU/FPSPU Group 17 HCS 5	DCD19170 GBM IL DSE --Y -- --	
13		Verify HCS5 ON		Next Step: END
		Verify Telemetry FpdFps_G17H5_S WM91L565	= ON	AND=WAHT3584
14		Switch ON HCS6		Next Step: 15
		Execute Telecommand SwOn_tanks_G17H6 TC Control Flags : Subsch. ID : 10 Det. descr. : PCDU:TC(8,4,112,5) switch On Tanks Group 17 HCS 6	DCD20170 GBM IL DSE --Y -- --	
15		Verify HCS6 ON		Next Step: END
		Verify Telemetry tanks_G17H6_S WM91M565	= ON	AND=WAHT3584
End of Procedure				