

Switch OFF HCS of HPS17
 File: H_CRP_TCS_17H0.xls
 Author: E. Picallo



Procedure Summary

Objectives

This procedure describes the steps needed to switch OFF a selected Heater Control Switch (HCS) of HPS17.

The location units of the HCSs belonging to HPS17 are the following:

- HCS1: Decontamination 4
- HCS2: FCV C1B
- HCS3: FCV A2B
- HCS4: FCV C4B
- HCS5: FPDPU/FPSPU
- HCS6: Tanks

Nominally the temperature control, and therefore the HCSs ON/OFF commanding, is managed by the CDMU ASW and it is driven through the Thermal Control Table (TCT).

Summary of Constraints

The selected HCS is switched OFF through ASW TC(8,4,112,3); thus the status of the ASW function "PCDU Management" has to be "running".

Spacecraft Configuration

Start of Procedure

CDMU in default configuration;
 HPS17 ON;
 HCS ON.

End of Procedure

CDMU in default configuration;
 HPS17 ON;
 HCS switched OFF.

Reference File(s)

Input Command Sequences

Output Command Sequences

HRT17H0

Referenced Displays

ANDs GRDs SLDs
 WAHT3584

Configuration Control Information

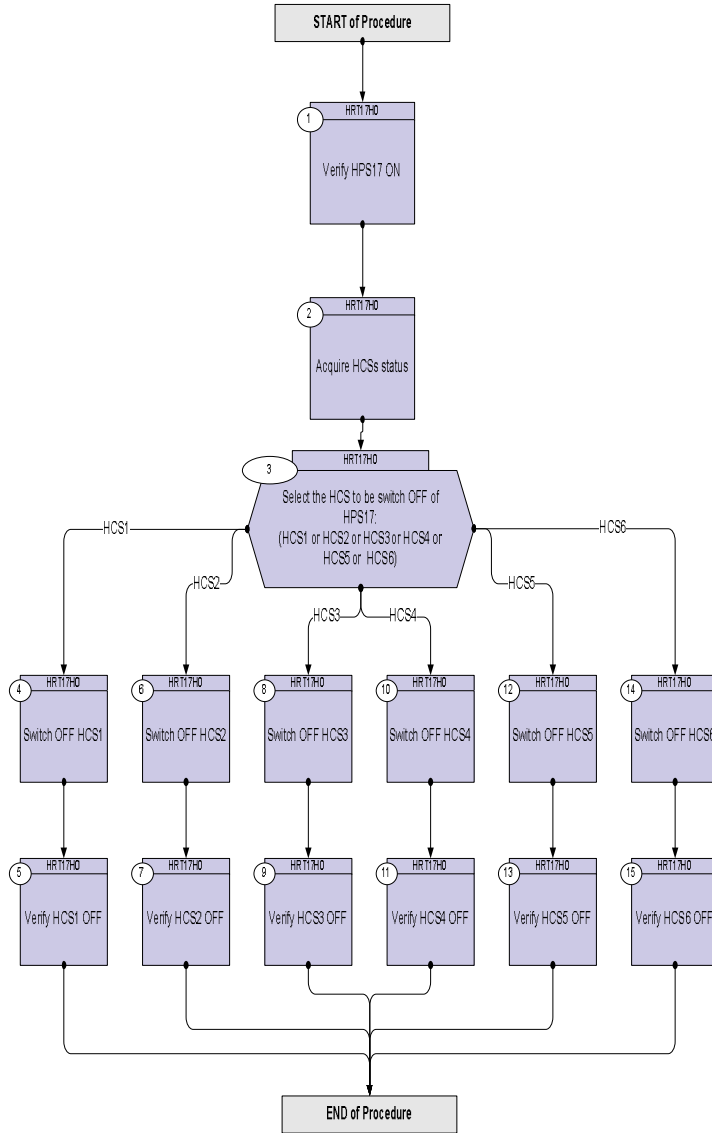
DATE	FOP ISSUE	VERSION	MODIFICATION DESCRIPTION	AUTHOR	SPR REF
17/02/09	2.1	1	Created	E. Picallo	

Status : Version 1 - Unchanged
 Last Checkin: 17/02/09

Switch OFF HCS of HPS17
 File: H_CRP_TCS_17H0.xls
 Author: E. Picallo



Procedure Flowchart Overview



Switch OFF HCS of HPS17
 File: H_CRP_TCS_17H0.xls
 Author: E. Picallo



Step No.	Time	Activity/Remarks	TC/TLM	Display/ Branch
Beginning of Procedure				
TC Seq. Name :HRT17H0 (Switch OFF HCS HPS17)				
TimeTag Type: N				
Sub Schedule ID:				
□				
1		Verify HPS17 ON		Next Step: 2
		Verify Telemetry GRP17_HPS_STS WM92H565 = ON		AND=WAHT3584
2		Acquire HCSs status		Next Step: 3
		Verify Telemetry Decon4_G17H1_S WM91G565		AND=WAHT3584
		Verify Telemetry FcvC1B_G17H2_S WM91H565		AND=WAHT3584
		Verify Telemetry FcvA2B_G17H3_S WM91J565		AND=WAHT3584
		Verify Telemetry FcvC4B_G17H4_S WM91K565		AND=WAHT3584
		Verify Telemetry FpdFps_G17H5_S WM91L565		AND=WAHT3584
		Verify Telemetry tanks_G17H6_S WM91M565		AND=WAHT3584
3		Select the HCS to be switch OFF of HPS17: (HCS1 or HCS2 or HCS3 or HCS4 or HCS5 or HCS6)		Next Step: HCS1 4 HCS2 6 HCS3 8 HCS4 10 HCS5 12 HCS6 14
4		Switch OFF HCS1		Next Step: 5
		Execute Telecommand SwOff_Decont_4_G17H1	DCE41170	
		TC Control Flags : GBM IL DSE --Y -- ---		
		Subsch. ID : 10 Det. descr. : PCDU:TC(8,4,112,3) switch Off Decontamination 4 Group 17 HCS 1		

