

Switch OFF HCS of HPS16
 File: H_CRP_TCS_16H0.xls
 Author: E. Picallo



Procedure Summary

Objectives

This procedure describes the steps needed to switch OFF a selected Heater Control Switch (HCS) of HPS16.

The location units of the HCSs belonging to HPS16 are the following:

- HCS1: FBOLC
- HCS2: CRS 1
- HCS3: FPMECDEC
- HCS4: RCS piping
- HCS5: CCU/HSDCU/HSFCU
- HCS6: GYRO

Nominally the temperature control, and therefore the HCSs ON/OFF commanding, is managed by the CDMU ASW and it is driven through the Thermal Control Table (TCT).

Summary of Constraints

The selected HCS is switched OFF through ASW TC(8,4,112,3); thus the status of the ASW function "PCDU Management" has to be "running".

Spacecraft Configuration

Start of Procedure

CDMU in default configuration;
 HPS16 ON;
 HCS ON.

End of Procedure

CDMU in default configuration;
 HPS16 ON;
 HCS switched OFF.

Reference File(s)

Input Command Sequences

Output Command Sequences

HRT16H0

Referenced Displays

ANDs GRDs SLDs
 WAHT3584

Configuration Control Information

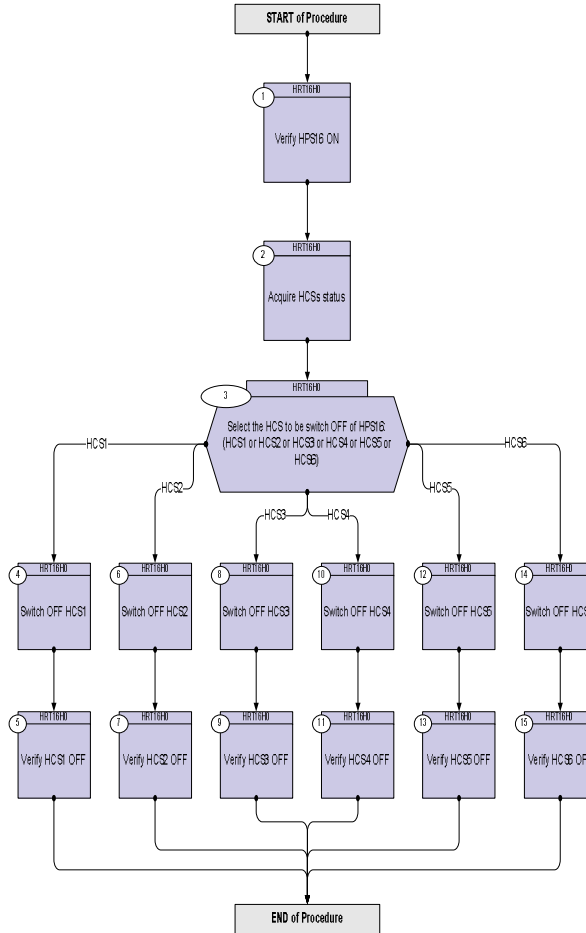
| DATE | FOP ISSUE | VERSION | MODIFICATION DESCRIPTION | AUTHOR | SPR REF |
|----------|-----------|---------|--------------------------|------------|---------|
| 17/02/09 | 2.1 | 1 | Created | E. Picallo | |

Status : Version 1 - Unchanged
 Last Checkin: 17/02/09

Switch OFF HCS of HPS16
 File: H_CRP_TCS_16H0.xls
 Author: E. Picallo



Procedure Flowchart Overview



Switch OFF HCS of HPS16
 File: H_CRP_TCS_16H0.xls
 Author: E. Picallo



| Step No. | Time | Activity/Remarks | TC/TLM | Display/ Branch |
|--|------|--|--------------------------|---|
| Beginning of Procedure | | | | |
| TC Seq. Name :HRT16H0 (Switch OFF HCS HPS16) | | | | |
| TimeTag Type: N | | | | |
| Sub Schedule ID: | | | | |
| □ | | | | |
| 1 | | Verify HPS16 ON | | Next Step: 2 |
| | | Verify Telemetry GRP16_HPS_STS WM92G565 = ON | | AND=WAHT3584 |
| 2 | | Acquire HCSs status | | Next Step: 3 |
| | | Verify Telemetry FPBOLC_G16H1_S WM91A565 | | AND=WAHT3584 |
| | | Verify Telemetry CRS1_G16H2_S WM91B565 | | AND=WAHT3584 |
| | | Verify Telemetry FPMECDEC_G16H3s WM91C565 | | AND=WAHT3584 |
| | | Verify Telemetry RCSpipG16H4_S WM91D565 | | AND=WAHT3584 |
| | | Verify Telemetry CcuHdhf_G16H5_S WM91E565 | | AND=WAHT3584 |
| | | Verify Telemetry GYRO_G16H6_S WM91F565 | | AND=WAHT3584 |
| 3 | | Select the HCS to be switch OFF of HPS16: (HCS1 or HCS2 or HCS3 or HCS4 or HCS5 or HCS6) | | Next Step: HCS1 4 HCS2 6 HCS3 8 HCS4 10 HCS5 12 HCS6 14 |
| 4 | | Switch OFF HCS1 | | Next Step: 5 |
| | | Execute Telecommand Swoff_FPBOLC_G16H1 | DCE35170 | |
| | | TC Control Flags : Subsch. ID : 0 Det. descr. : PCDU:TC(8,4,112,3) switch Off FPBOLC Group 16 HCS 1 | GBM IL DSE --Y -- --- | |

