

Switch ON HCS of HPS15
 File: H_CRP_TCS_15H1.xls
 Author: E. Picallo



Procedure Summary

Objectives

This procedure describes the steps needed to switch ON a selected Heater Control Switch (HCS) of HPS15.

The location units of the HCSs belonging to HPS15 are the following:

- HCS1: Decontamination 6
- HCS2: PHWOV
- HCS3: RCS piping
- HCS4: FCV A1A
- HCS5: FCV C2A
- HCS6: RCS piping

Nominally the temperature control, and therefore the HCSs ON/OFF commanding, is managed by the CDMU ASW and it is driven through the Thermal Control Table (TCT).

Summary of Constraints

The selected HCS is switched ON through ASW TC(8,4,112,5); thus the status of the ASW function "PCDU Management" has to be "running".

Spacecraft Configuration

Start of Procedure

CDMU in default configuration;
 HPS15 ON;
 HCS OFF.

End of Procedure

CDMU in default configuration;
 HPS15 ON;
 HCS switched ON.

Reference File(s)

Input Command Sequences

Output Command Sequences

HRT15H1

Referenced Displays

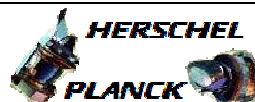
ANDs GRDs SLDs
 WAHT3584

Configuration Control Information

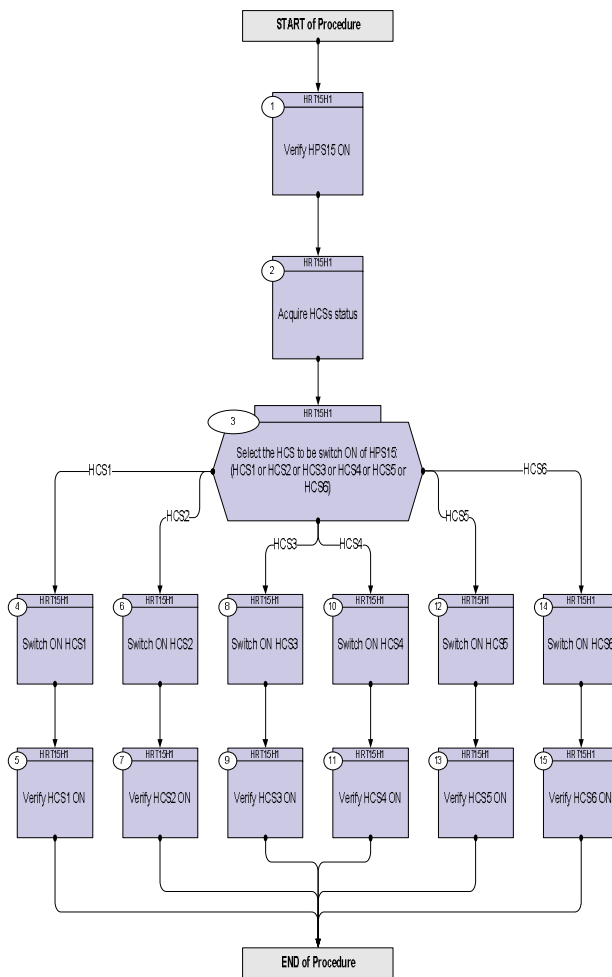
DATE	FOP ISSUE	VERSION	MODIFICATION DESCRIPTION	AUTHOR	SPR REF
17/02/09	2.1	1	Created	E. Picallo	

Status : Version 1 - Unchanged
 Last Checkin: 17/02/09

Switch ON HCS of HPS15
 File: H_CRP_TCS_15H1.xls
 Author: E. Picallo



Procedure Flowchart Overview



Switch ON HCS of HPS15
 File: H_CRP_TCS_15H1.xls
 Author: E. Picallo



Step No.	Time	Activity/Remarks	TC/TLM	Display/ Branch
Beginning of Procedure				
TC Seq. Name :HRT15H1 (Switch ON HCS HPS15)				
TimeTag Type: N				
Sub Schedule ID:				
□				
1		Verify HPS15 ON		Next Step: 2
		Verify Telemetry GRP15_HPS_STS WM82H565 = ON		AND=WAHT3584
2		Acquire HCSs status		Next Step: 3
		Verify Telemetry Decon6_G15H1_S WM81G565		AND=WAHT3584
		Verify Telemetry FHWOV_G15H2_S WM81H565		AND=WAHT3584
		Verify Telemetry RCSpipG15H3_S WM81J565		AND=WAHT3584
		Verify Telemetry FcvA1A_G15H4_S WM81K565		AND=WAHT3584
		Verify Telemetry FcvC2A_G15H5_S WM81L565		AND=WAHT3584
		Verify Telemetry RCSpipG15H6_S WM81M565		AND=WAHT3584
3		Select the HCS to be switch ON of HPS15: (HCS1 or HCS2 or HCS3 or HCS4 or HCS5 or HCS6)		Next Step: HCS1 4 HCS2 6 HCS3 8 HCS4 10 HCS5 12 HCS6 14
4		Switch ON HCS1		Next Step: 5
		Execute Telecommand SwOn_Decont_6_G15H1	DCD03170	
		TC Control Flags : GBM IL DSE --Y -- ---		
		Subsch. ID : 10 Det. descr. : PCDU:TC(8,4,112,5) switch On Decontamination 6 Group 15 HCS 1		

Switch ON HCS of HPS15
 File: H_CRP_TCS_15H1.xls
 Author: E. Picallo



Step No.	Time	Activity/Remarks	TC/TLM	Display/ Branch
5		Verify HCS1 ON		Next Step: END
		Verify Telemetry Decon6_G15H1_s WM81G565	= ON	AND=WAHT3584
6		Switch ON HCS2		Next Step: 7
		Execute Telecommand SwOn_FHWOV_G15H2 TC Control Flags : GBM IL DSE --Y -- -- Subsch. ID : 10 Det. descr. : PCDU:TC(8,4,112,5) switch On FHWOV Group 15 HCS 2	DCD04170	
7		Verify HCS2 ON		Next Step: END
		Verify Telemetry FHWOV_G15H2_s WM81H565	= ON	AND=WAHT3584
8		Switch ON HCS3		Next Step: 9
		Execute Telecommand SwOn_RCSpip_G15H3 TC Control Flags : GBM IL DSE --Y -- -- Subsch. ID : 10 Det. descr. : PCDU:TC(8,4,112,5) switch On RCS piping Group 15 HCS 3	DCD05170	
9		Verify HCS3 ON		Next Step: END
		Verify Telemetry RCSpipG15H3_s WM81J565	= ON	AND=WAHT3584
10		Switch ON HCS4		Next Step: 11
		Execute Telecommand SwOn_FCV_A1A_G15H4 TC Control Flags : GBM IL DSE --Y -- -- Subsch. ID : 10 Det. descr. : PCDU:TC(8,4,112,5) switch On FCV A1A Group 15 HCS 4	DCD06170	

Switch ON HCS of HPS15
 File: H_CRP_TCS_15H1.xls
 Author: E. Picallo



Step No.	Time	Activity/Remarks	TC/TLM	Display/ Branch
11		Verify HCS4 ON		Next Step: END
		Verify Telemetry FcvA1A_G15H4_S WM81K565	= ON	AND=WAHT3584
12		Switch ON HCS5		Next Step: 13
		Execute Telecommand SwOn_FCV_C2A_G15H5 <i>TC Control Flags :</i> Subsch. ID : 10 Det. descr. : PCDU:TC(8,4,112,5) switch On FCV C2A Group 15 HCS 5	DCD07170 GBM IL DSE --Y -- ---	
13		Verify HCS5 ON		Next Step: END
		Verify Telemetry FcvC2A_G15H5_S WM81L565	= ON	AND=WAHT3584
14		Switch ON HCS6		Next Step: 15
		Execute Telecommand SwOn_RCSpip_G15H6 <i>TC Control Flags :</i> Subsch. ID : 10 Det. descr. : PCDU:TC(8,4,112,5) switch On RCS piping Group 15 HCS 6	DCD08170 GBM IL DSE --Y -- ---	
15		Verify HCS6 ON		Next Step: END
		Verify Telemetry RCSpipG15H6_S WM81M565	= ON	AND=WAHT3584
End of Procedure				