

Switch OFF HCS of HPS15
 File: H_CRP_TCS_15H0.xls
 Author: E. Picallo



Procedure Summary

Objectives

This procedure describes the steps needed to switch OFF a selected Heater Control Switch (HCS) of HPS15.

The location units of the HCSs belonging to HPS15 are the following:

- HCS1: Decontamination 6
- HCS2: PHWOV
- HCS3: RCS piping
- HCS4: FCV A1A
- HCS5: FCV C2A
- HCS6: RCS piping

Nominally the temperature control, and therefore the HCSs ON/OFF commanding, is managed by the CDMU ASW and it is driven through the Thermal Control Table (TCT).

Summary of Constraints

The selected HCS is switched OFF through ASW TC(8,4,112,3); thus the status of the ASW function "PCDU Management" has to be "running".

Spacecraft Configuration

Start of Procedure

CDMU in default configuration;
 HPS15 ON;
 HCS ON.

End of Procedure

CDMU in default configuration;
 HPS15 ON;
 HCS switched OFF.

Reference File(s)

Input Command Sequences

Output Command Sequences

HRT15H0

Referenced Displays

ANDs GRDs SLDs
 WAHT3584

Configuration Control Information

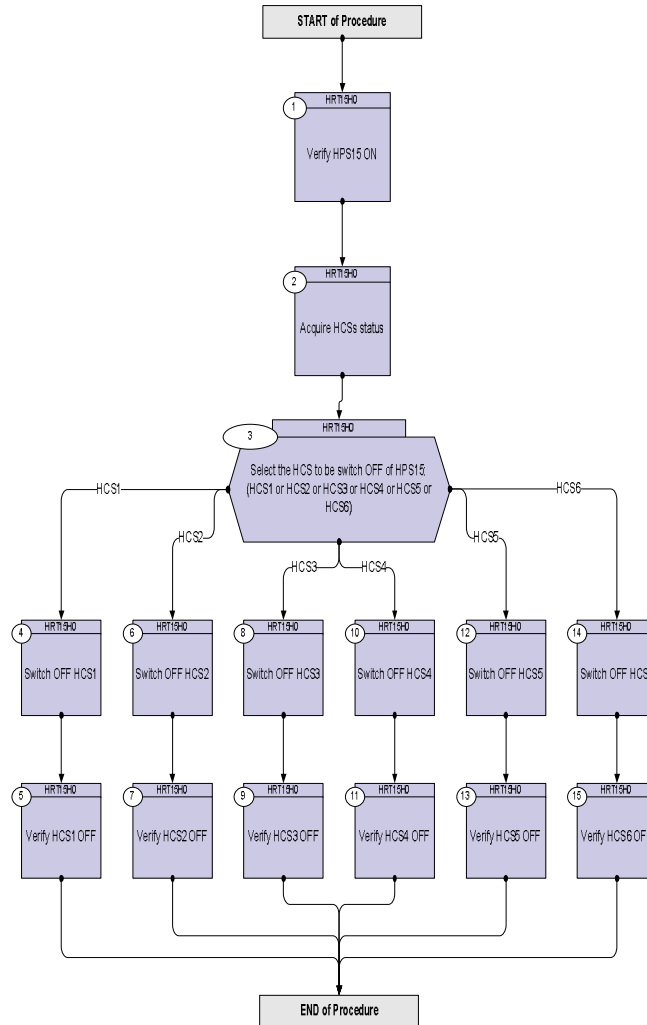
DATE	FOP ISSUE	VERSION	MODIFICATION DESCRIPTION	AUTHOR	SPR REF
17/02/09	2.1	1	Created	E. Picallo	

Status : Version 1 - Unchanged
 Last Checkin: 17/02/09

Switch OFF HCS of HPS15
 File: H_CRP_TCS_15H0.xls
 Author: E. Picallo



Procedure Flowchart Overview



Switch OFF HCS of HPS15
 File: H_CRP_TCS_15H0.xls
 Author: E. Picallo



Step No.	Time	Activity/Remarks	TC/TLM	Display/ Branch
Beginning of Procedure				
TC Seq. Name :HRT15H0 (Switch OFF HCS HPS15)				
TimeTag Type: N				
Sub Schedule ID:				
□				
1		Verify HPS15 ON		Next Step: 2
		Verify Telemetry GRP15_HPS_STS WM82H565 = ON		AND=WAHT3584
2		Acquire HCSs status		Next Step: 3
		Verify Telemetry Decon6_G15H1_S WM81G565		AND=WAHT3584
		Verify Telemetry FHWOV_G15H2_S WM81H565		AND=WAHT3584
		Verify Telemetry RCSpipG15H3_S WM81J565		AND=WAHT3584
		Verify Telemetry FcvA1A_G15H4_S WM81K565		AND=WAHT3584
		Verify Telemetry FcvC2A_G15H5_S WM81L565		AND=WAHT3584
		Verify Telemetry RCSpipG15H6_S WM81M565		AND=WAHT3584
3		Select the HCS to be switch OFF of HPS15: (HCS1 or HCS2 or HCS3 or HCS4 or HCS5 or HCS6)		Next Step: HCS1 4 HCS2 6 HCS3 8 HCS4 10 HCS5 12 HCS6 14
4		Switch OFF HCS1		Next Step: 5
		Execute Telecommand SwOff_Decont_6_G15H1	DCE29170	
		TC Control Flags : GBM IL DSE --Y -- ---		
		Subsch. ID : 10 Det. descr. : PCDU:TC(8,4,112,3) switch Off Decontamination 6 Group 15 HCS 1		

Switch OFF HCS of HPS15
 File: H_CRP_TCS_15H0.xls
 Author: E. Picallo



Step No.	Time	Activity/Remarks	TC/TLM	Display/ Branch
5		Verify HCS1 OFF		Next Step: END
		Verify Telemetry Decon6_G15H1_s WM81G565	= OFF	AND=WAHT3584
6		Switch OFF HCS2		Next Step: 7
		Execute Telecommand SwOff_FHWOV_G15H2 TC Control Flags : GBM IL DSE --Y -- --- Subsch. ID : 10 Det. descr. : PCDU:TC(8,4,112,3) switch Off FHWOV Group 15 HCS 2	DCE30170	
7		Verify HCS2 OFF		Next Step: END
		Verify Telemetry FHWOV_G15H2_s WM81H565	= OFF	AND=WAHT3584
8		Switch OFF HCS3		Next Step: 9
		Execute Telecommand SwOff_RCSpip_G15H3 TC Control Flags : GBM IL DSE --Y -- --- Subsch. ID : 10 Det. descr. : PCDU:TC(8,4,112,3) switch Off RCS piping Group 15 HCS 3	DCE31170	
9		Verify HCS3 OFF		Next Step: END
		Verify Telemetry RCSpipG15H3_s WM81J565	= OFF	AND=WAHT3584
10		Switch OFF HCS4		Next Step: 11
		Execute Telecommand SwOff_FCV_A1A_G15H4 TC Control Flags : GBM IL DSE --Y -- --- Subsch. ID : 10 Det. descr. : PCDU:TC(8,4,112,3) switch Off FCV A1A Group 15 HCS 4	DCE32170	

Switch OFF HCS of HPS15
 File: H_CRP_TCS_15H0.xls
 Author: E. Picallo



Step No.	Time	Activity/Remarks	TC/TLM	Display/ Branch
11		Verify HCS4 OFF		Next Step: END
		Verify Telemetry Fcva1A_G15H4_S WM81K565	= OFF	AND=WAHT3584
12		Switch OFF HCS5		Next Step: 13
		Execute Telecommand SwOff_FCv_C2A_G15H5 TC Control Flags : GBM IL DSE --Y -- --- Subsch. ID : 10 Det. descr. : PCDU:TC(8,4,112,3) switch Off FCV C2A Group 15 HCS 5	DCE33170	
13		Verify HCS5 OFF		Next Step: END
		Verify Telemetry Fcvc2A_G15H5_S WM81L565	= OFF	AND=WAHT3584
14		Switch OFF HCS6		Next Step: 15
		Execute Telecommand SwOff_RCSpip_G15H6 TC Control Flags : GBM IL DSE --Y -- --- Subsch. ID : 10 Det. descr. : PCDU:TC(8,4,112,3) switch Off RCS piping Group 15 HCS 6	DCE34170	
15		Verify HCS6 OFF		Next Step: END
		Verify Telemetry RCSpipG15H6_S WM81M565	= OFF	AND=WAHT3584
End of Procedure				