

Switch ON HCS of HPS14
 File: H_CRP_TCS_14H1.xls
 Author: E. Picallo



Procedure Summary

Objectives

This procedure describes the steps needed to switch ON a selected Heater Control Switch (HCS) of HPS14.

The location units of the HCSs belonging to HPS14 are the following:

- HCS1: CRS 2
- HCS2: FHHRH
- HCS3: FHWEV/FHICU
- HCS4: FCV C3B
- HCS5: RCS piping
- HCS6: PT/LF/LV1/LV2

Nominally the temperature control, and therefore the HCSs ON/OFF commanding, is managed by the CDMU ASW and it is driven through the Thermal Control Table (TCT).

Summary of Constraints

The selected HCS is switched ON through ASW TC(8,4,112,5); thus the status of the ASW function "PCDU Management" has to be "running".

Spacecraft Configuration

Start of Procedure

CDMU in default configuration;
 HPS14 ON;
 HCS OFF.

End of Procedure

CDMU in default configuration;
 HPS14 ON;
 HCS switched ON.

Reference File(s)

Input Command Sequences

Output Command Sequences

HRT14H1

Referenced Displays

ANDs GRDs SLDs
 WAHT3584

Configuration Control Information

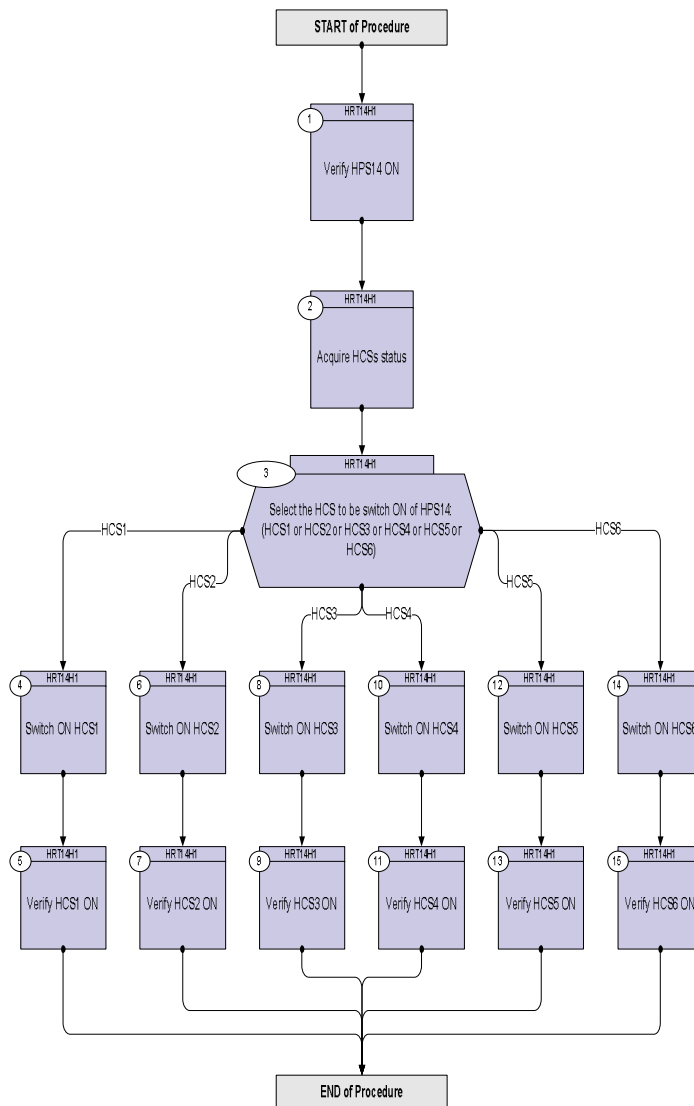
DATE	FOP ISSUE	VERSION	MODIFICATION DESCRIPTION	AUTHOR	SPR REF
17/02/09	2.1	1	Created	E. Picallo	

Status : Version 1 - Unchanged
 Last Checkin: 17/02/09

Switch ON HCS of HPS14
 File: H_CRP_TCS_14H1.xls
 Author: E. Picallo



Procedure Flowchart Overview



Switch ON HCS of HPS14
 File: H_CRP_TCS_14H1.xls
 Author: E. Picallo



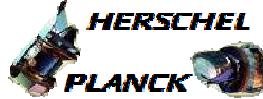
Step No.	Time	Activity/Remarks	TC/TLM	Display/ Branch
Beginning of Procedure				
TC Seq. Name :HRT14H1 (Switch ON HCS HPS14)				
TimeTag Type: N				
Sub Schedule ID:				
□				
1		Verify HPS14 ON		Next Step: 2
		Verify Telemetry GRP14_HPS_STS WM82G565 = ON		AND=WAHT3584
2		Acquire HCSs status		Next Step: 3
		Verify Telemetry CRS2_G14H1_S WM81A565		AND=WAHT3584
		Verify Telemetry FHHRH_G14H2_S WM81B565		AND=WAHT3584
		Verify Telemetry FhWevIcuG14H3_S WM81C565		AND=WAHT3584
		Verify Telemetry FcvC3B_G14H4_S WM81D565		AND=WAHT3584
		Verify Telemetry RCSpipG14H5_S WM81E565		AND=WAHT3584
		Verify Telemetry PtLflv12G14H6_S WM81F565		AND=WAHT3584
3		Select the HCS to be switch ON of HPS14: (HCS1 or HCS2 or HCS3 or HCS4 or HCS5 or HCS6)		Next Step: HCS1 4 HCS2 6 HCS3 8 HCS4 10 HCS5 12 HCS6 14
4		Switch ON HCS1		Next Step: 5
		Execute Telecommand SwOn_CRS2_G14H1	DCC97170	
		TC Control Flags : Subsch. ID : 10 Det. descr. : PCDU:TC(8,4,112,5) switch On CRS2 Group 14 HCS 1	GBM IL DSE --Y -- --	

Switch ON HCS of HPS14
 File: H_CRP_TCS_14H1.xls
 Author: E. Picallo



Step No.	Time	Activity/Remarks	TC/TLM	Display/ Branch
5		Verify HCS1 ON		Next Step: END
		Verify Telemetry CRS2_G14H1_S WM81A565	= ON	AND=WAHT3584
6		Switch ON HCS2		Next Step: 7
		Execute Telecommand SwOn_FHHRH_G14H2 TC Control Flags : Subsch. ID : 10 Det. descr. : PCDU:TC(8,4,112,5) switch On FHHRH Group 14 HCS 2	DCC98170 GBM IL DSE --Y -- ---	
7		Verify HCS2 ON		Next Step: END
		Verify Telemetry FHHRH_G14H2_S WM81B565	= ON	AND=WAHT3584
8		Switch ON HCS3		Next Step: 9
		Execute Telecommand SwOn_FHWEV/FHICU_G14H3 TC Control Flags : Subsch. ID : 10 Det. descr. : PCDU:TC(8,4,112,5) switch On FHWEV/FHICU Group 14 HCS 3	DCC99170 GBM IL DSE --Y -- ---	
9		Verify HCS3 ON		Next Step: END
		Verify Telemetry FhWevIcuG14H3_S WM81C565	= ON	AND=WAHT3584
10		Switch ON HCS4		Next Step: 11
		Execute Telecommand SwOn_FCV_C3B_G14H4 TC Control Flags : Subsch. ID : 10 Det. descr. : PCDU:TC(8,4,112,5) switch On FCV C3B Group 14 HCS 4	DCD00170 GBM IL DSE --Y -- ---	

Switch ON HCS of HPS14
 File: H_CRP_TCS_14H1.xls
 Author: E. Picallo



Step No.	Time	Activity/Remarks	TC/TLM	Display/ Branch
11		Verify HCS4 ON		Next Step: END
		Verify Telemetry FcvC3B_G14H4_S WM81D565	= ON	AND=WAHT3584
12		Switch ON HCS5		Next Step: 13
		Execute Telecommand SwOn_RCSpip_G14H5 TC Control Flags : Subsch. ID : 10 Det. descr. : PCDU:TC(8,4,112,5) switch On RCS piping Group 14 HCS 5 GBM IL DSE --Y -- --	DCD01170	
13		Verify HCS5 ON		Next Step: END
		Verify Telemetry RCSpipG14H5_S WM81E565	= ON	AND=WAHT3584
14		Switch ON HCS6		Next Step: 15
		Execute Telecommand SwOn_PTLFLV1_2_G14H6 TC Control Flags : Subsch. ID : 10 Det. descr. : PCDU:TC(8,4,112,5) switch On PT/LF/LV1/LV2 Group 14 HCS 6 GBM IL DSE --Y -- --	DCD02170	
15		Verify HCS6 ON		Next Step: END
		Verify Telemetry PtLfLv12G14H6_S WM81F565	= ON	AND=WAHT3584
End of Procedure				