

Switch OFF HCS of HPS14  
 File: H\_CRP\_TCS\_14H0.xls  
 Author: E. Picallo



## Procedure Summary

### Objectives

This procedure describes the steps needed to switch OFF a selected Heater Control Switch (HCS) of HPS14.

The location units of the HCSs belonging to HPS14 are the following:

- HCS1: CRS 2
- HCS2: FHHRH
- HCS3: FHWEV/FHICU
- HCS4: FCV C3B
- HCS5: RCS piping
- HCS6: PT/LF/LV1/LV2

Nominally the temperature control, and therefore the HCSs ON/OFF commanding, is managed by the CDMU ASW and it is driven through the Thermal Control Table (TCT).

### Summary of Constraints

The selected HCS is switched OFF through ASW TC(8,4,112,3); thus the status of the ASW function "PCDU Management" has to be "running".

### Spacecraft Configuration

#### Start of Procedure

CDMU in default configuration;  
 HPS14 ON;  
 HCS ON.

#### End of Procedure

CDMU in default configuration;  
 HPS14 ON;  
 HCS switched OFF.

### Reference File(s)

#### Input Command Sequences

#### Output Command Sequences

HRT14H0

### Referenced Displays

ANDs      GRDs      SLDs  
 WAHT3584

### Configuration Control Information

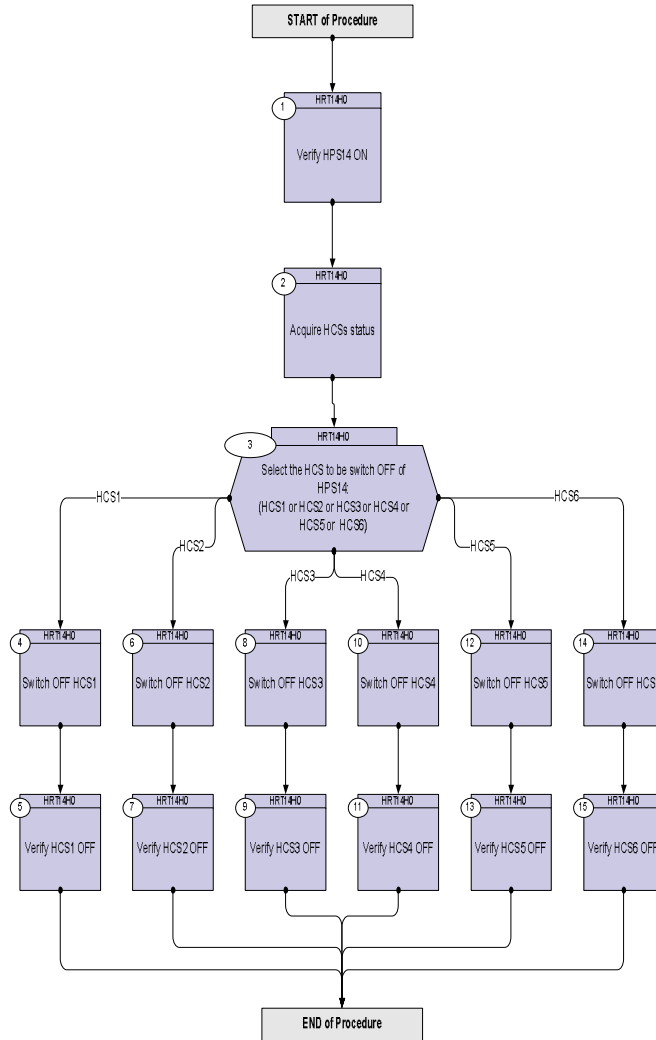
DATE	FOP ISSUE	VERSION	MODIFICATION DESCRIPTION	AUTHOR	SPR REF
17/02/09	2.1	1	Created	E. Picallo	

Status : Version 1 - Unchanged  
 Last Checkin: 17/02/09

Switch OFF HCS of HPS14  
File: H\_CRP\_TCS\_14H0.xls  
Author: E. Picallo



### Procedure Flowchart Overview



Switch OFF HCS of HPS14  
 File: H\_CRP\_TCS\_14H0.xls  
 Author: E. Picallo



Step No.	Time	Activity/Remarks	TC/TLM	Display/ Branch
<b>Beginning of Procedure</b>				
TC Seq. Name :HRT14H0 (Switch OFF HCS HPS14)				
TimeTag Type: N				
Sub Schedule ID:				
□				
1		Verify HPS14 ON		Next Step: 2
		Verify Telemetry GRP14_HPS_STS WM82G565 = ON		AND=WAHT3584
2		Acquire HCSs status		Next Step: 3
		Verify Telemetry CRS2_G14H1_S WM81A565		AND=WAHT3584
		Verify Telemetry FHHRH_G14H2_S WM81B565		AND=WAHT3584
		Verify Telemetry FhWevIcuG14H3_S WM81C565		AND=WAHT3584
		Verify Telemetry Fcvc3B_G14H4_S WM81D565		AND=WAHT3584
		Verify Telemetry RCSpipG14H5_S WM81E565		AND=WAHT3584
		Verify Telemetry PtLflv12G14H6_S WM81F565		AND=WAHT3584
3		Select the HCS to be switch OFF of HPS14: (HCS1 or HCS2 or HCS3 or HCS4 or HCS5 or HCS6)		Next Step: HCS1 4 HCS2 6 HCS3 8 HCS4 10 HCS5 12 HCS6 14
4		Switch OFF HCS1		Next Step: 5
		Execute Telecommand SwOff_CRS2_G14H1	DCE23170	
		TC Control Flags : Subsch. ID : 10 Det. descr. : PCDU:TC(8,4,112,3) switch Off CRS2 Group 14 HCS 1	GBM IL DSE --Y -- ---	

Switch OFF HCS of HPS14  
 File: H\_CRP\_TCS\_14H0.xls  
 Author: E. Picallo



Step No.	Time	Activity/Remarks	TC/TLM	Display/ Branch
5		Verify HCS1 OFF		Next Step: END
		Verify Telemetry CRS2_G14H1_S WM81A565	= OFF	AND=WAHT3584
6		Switch OFF HCS2		Next Step: 7
		Execute Telecommand SwOff_FHHRH_G14H2 TC Control Flags : GBM IL DSE --Y -- --- Subsch. ID : 10 Det. descr. : PCDU:TC(8,4,112,3) switch Off FHHRH Group 14 HCS 2	DCE24170	
7		Verify HCS2 OFF		Next Step: END
		Verify Telemetry FHHRH_G14H2_S WM81B565	= OFF	AND=WAHT3584
8		Switch OFF HCS3		Next Step: 9
		Execute Telecommand SwOff_FHWEV FHICU_G14H3 TC Control Flags : GBM IL DSE --Y -- --- Subsch. ID : 10 Det. descr. : PCDU:TC(8,4,112,3) switch Off FHWEV/FHICU Group 14 HCS 3	DCE25170	
9		Verify HCS3 OFF		Next Step: END
		Verify Telemetry FhWevIcuG14H3_S WM81C565	= OFF	AND=WAHT3584
10		Switch OFF HCS4		Next Step: 11
		Execute Telecommand SwOff_FCV_C3B_G14H4 TC Control Flags : GBM IL DSE --Y -- --- Subsch. ID : 10 Det. descr. : PCDU:TC(8,4,112,3) switch Off FCV C3B Group 14 HCS 4	DCE26170	

