

Switch ON HCS of HPS13
 File: H_CRP_TCS_13H1.xls
 Author: E. Picallo



Procedure Summary

Objectives

This procedure describes the steps needed to switch ON a selected Heater Control Switch (HCS) of HPS13.

The location units of the HCSs belonging to HPS13 are the following:

- HCS1: NOT USED
- HCS2: RWA 4
- HCS3: RWA 1
- HCS4: RWA 3
- HCS5: FHWEV
- HCS6: RWA 2

Nominally the temperature control, and therefore the HCSs ON/OFF commanding, is managed by the CDMU ASW and it is driven through the Thermal Control Table (TCT).

Summary of Constraints

The selected HCS is switched ON through ASW TC(8,4,112,5); thus the status of the ASW function "PCDU Management" has to be "running".

Spacecraft Configuration

Start of Procedure

CDMU in default configuration;
 HPS13 ON;
 HCS OFF.

End of Procedure

CDMU in default configuration;
 HPS13 ON;
 HCS switched ON.

Reference File(s)

Input Command Sequences

Output Command Sequences

HRT13H1

Referenced Displays

ANDs GRDs SLDs
 WAHT3584

Configuration Control Information

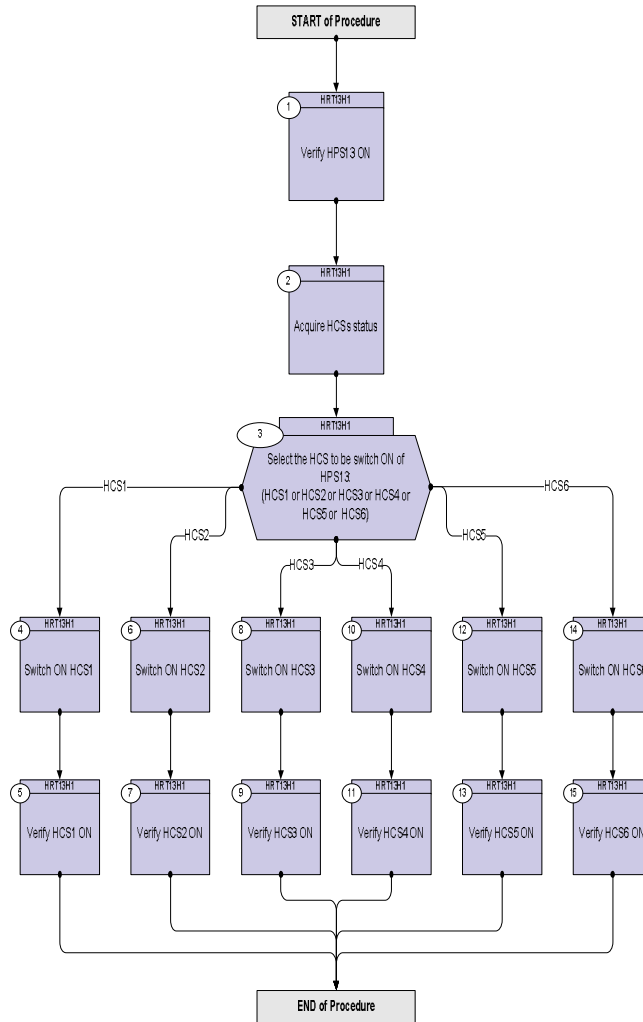
DATE	FOP ISSUE	VERSION	MODIFICATION DESCRIPTION	AUTHOR	SPR REF
17/02/09	2.1	1	Created	E. Picallo	

Status : Version 1 - Unchanged
 Last Checkin: 17/02/09

Switch ON HCS of HPS13
 File: H_CRP_TCS_13H1.xls
 Author: E. Picallo



Procedure Flowchart Overview

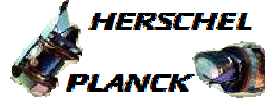


Switch ON HCS of HPS13
 File: H_CRP_TCS_13H1.xls
 Author: E. Picallo



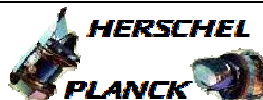
Step No.	Time	Activity/Remarks	TC/TLM	Display/ Branch
Beginning of Procedure				
TC Seq. Name :HRT13H1 (Switch ON HCS HPS13)				
TimeTag Type: N Sub Schedule ID: □				
1		Verify HPS13 ON		Next Step: 2
		Verify Telemetry GRP13_HPS_STS WM72H565 = ON		AND=WAHT3584
2		Acquire HCSs status		Next Step: 3
		Verify Telemetry Grp13Heat1_S WM71G565		AND=WAHT3584
		Verify Telemetry RWA4_G13H2_S WM71H565		AND=WAHT3584
		Verify Telemetry RWA1_G13H3_S WM71J565		AND=WAHT3584
		Verify Telemetry RWA3_G13H4_S WM71K565		AND=WAHT3584
		Verify Telemetry FHWIV_G13H5_S WM71L565		AND=WAHT3584
		Verify Telemetry RWA2_G13H6_S WM71M565		AND=WAHT3584
3		Select the HCS to be switch ON of HPS13: (HCS1 or HCS2 or HCS3 or HCS4 or HCS5 or HCS6)		Next Step: HCS1 4 HCS2 6 HCS3 8 HCS4 10 HCS5 12 HCS6 14
4		Switch ON HCS1		Next Step: 5
		Execute Telecommand SwOn_Gr13Heat1 TC Control Flags : GBM IL DSE --Y -- -- Subsch. ID : 10 Det. descr. : PCDU:TC(8,4,112,5) switch On Group 13 HCS 1	DCC91170	

Switch ON HCS of HPS13
 File: H_CRP_TCS_13H1.xls
 Author: E. Picallo



Step No.	Time	Activity/Remarks	TC/TLM	Display/ Branch
5		Verify HCS1 ON		Next Step: END
		Verify Telemetry Grp13Heat1_s WM71G565	= ON	AND=WAHT3584
6		Switch ON HCS2		Next Step: 7
		Execute Telecommand SwOn_RWA4_G13H2 TC Control Flags : Subsch. ID : 10 Det. descr. : PCDU:TC(8,4,112,5) switch On RWA 4 Group 13 HCS 2	DCC92170 GBM IL DSE --Y -- ---	
7		Verify HCS2 ON		Next Step: END
		Verify Telemetry RWA4_G13H2_s WM71H565	= ON	AND=WAHT3584
8		Switch ON HCS3		Next Step: 9
		Execute Telecommand SwOn_RWA1_G13H3 TC Control Flags : Subsch. ID : 10 Det. descr. : PCDU:TC(8,4,112,5) switch On RWA 1 Group 13 HCS 3	DCC93170 GBM IL DSE --Y -- ---	
9		Verify HCS3 ON		Next Step: END
		Verify Telemetry RWA1_G13H3_s WM71J565	= ON	AND=WAHT3584
10		Switch ON HCS4		Next Step: 11
		Execute Telecommand SwOn_RWA3_G13H4 TC Control Flags : Subsch. ID : 10 Det. descr. : PCDU:TC(8,4,112,5) switch On RWA 3 Group 13 HCS 4	DCC94170 GBM IL DSE --Y -- ---	

Switch ON HCS of HPS13
 File: H_CRP_TCS_13H1.xls
 Author: E. Picallo



Step No.	Time	Activity/Remarks	TC/TLM	Display/ Branch
11		Verify HCS4 ON		Next Step: END
		Verify Telemetry RWA3_G13H4_S WM71K565	= ON	AND=WAHT3584
12		Switch ON HCS5		Next Step: 13
		Execute Telecommand SwOn_FHWEV_G13H5 TC Control Flags : GBM IL DSE --Y -- -- Subsch. ID : 10 Det. descr. : PCDU:TC(8,4,112,5) switch On FHWEV Group 13 HCS 5	DCC95170	
13		Verify HCS5 ON		Next Step: END
		Verify Telemetry FHWIV_G13H5_S WM71L565	= ON	AND=WAHT3584
14		Switch ON HCS6		Next Step: 15
		Execute Telecommand SwOn_RWA2_G13H6 TC Control Flags : GBM IL DSE --Y -- -- Subsch. ID : 10 Det. descr. : PCDU:TC(8,4,112,5) switch On RWA 2 Group 13 HCS 6	DCC96170	
15		Verify HCS6 ON		Next Step: END
		Verify Telemetry RWA2_G13H6_S WM71M565	= ON	AND=WAHT3584
End of Procedure				