

Switch OFF HCS of HPS13  
 File: H\_CRP\_TCS\_13H0.xls  
 Author: E. Picallo



## Procedure Summary

### Objectives

This procedure describes the steps needed to switch OFF a selected Heater Control Switch (HCS) of HPS13.

The location units of the HCSs belonging to HPS13 are the following:

- HCS1: NOT USED
- HCS2: RWA 4
- HCS3: RWA 1
- HCS4: RWA 3
- HCS5: FHWEV
- HCS6: RWA 2

Nominally the temperature control, and therefore the HCSs ON/OFF commanding, is managed by the CDMU ASW and it is driven through the Thermal Control Table (TCT).

### Summary of Constraints

The selected HCS is switched OFF through ASW TC(8,4,112,3); thus the status of the ASW function "PCDU Management" has to be "running".

### Spacecraft Configuration

#### Start of Procedure

CDMU in default configuration;  
 HPS13 ON;  
 HCS ON.

#### End of Procedure

CDMU in default configuration;  
 HPS13 ON;  
 HCS switched OFF.

### Reference File(s)

#### Input Command Sequences

#### Output Command Sequences

HRT13H0

### Referenced Displays

ANDs      GRDs      SLDs  
 WAHT3584

### Configuration Control Information

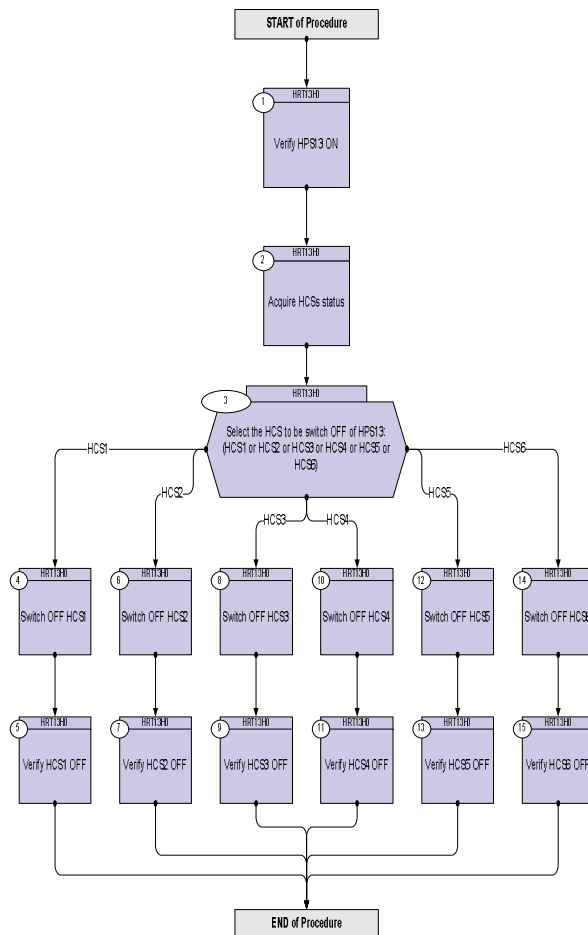
DATE	FOP ISSUE	VERSION	MODIFICATION DESCRIPTION	AUTHOR	SPR REF
17/02/09	2.1	1	Created	E. Picallo	

Status : Version 1 - Unchanged  
 Last Checkin: 17/02/09

Switch OFF HCS of HPS13  
 File: H\_CRP\_TCS\_13H0.xls  
 Author: E. Picallo



## Procedure Flowchart Overview



Switch OFF HCS of HPS13  
 File: H\_CRP\_TCS\_13H0.xls  
 Author: E. Picallo



Step No.	Time	Activity/Remarks	TC/TLM	Display/ Branch
<b>Beginning of Procedure</b>				
TC Seq. Name :HRT13H0 (Switch OFF HCS HPS13)				
TimeTag Type: N				
Sub Schedule ID:				
□				
1		Verify HPS13 ON		Next Step: 2
		Verify Telemetry GRP13_HPS_STS WM72H565 = ON		AND=WAHT3584
2		Acquire HCSs status		Next Step: 3
		Verify Telemetry Grp13Heat1_S WM71G565		AND=WAHT3584
		Verify Telemetry RWA4_G13H2_S WM71H565		AND=WAHT3584
		Verify Telemetry RWA1_G13H3_S WM71J565		AND=WAHT3584
		Verify Telemetry RWA3_G13H4_S WM71K565		AND=WAHT3584
		Verify Telemetry FHWIV_G13H5_S WM71L565		AND=WAHT3584
		Verify Telemetry RWA2_G13H6_S WM71M565		AND=WAHT3584
3		Select the HCS to be switch OFF of HPS13: (HCS1 or HCS2 or HCS3 or HCS4 or HCS5 or HCS6)		Next Step: HCS1 4 HCS2 6 HCS3 8 HCS4 10 HCS5 12 HCS6 14
4		Switch OFF HCS1		Next Step: 5
		Execute Telecommand SwOff_Gr13Heat1 DCE17170		
		TC Control Flags : GBM IL DSE --Y -- ---		
		Subsch. ID : 10 Det. descr. : PCDU:TC(8,4,112,3) switch Off Group 13 HCS 1		

Switch OFF HCS of HPS13  
 File: H\_CRP\_TCS\_13H0.xls  
 Author: E. Picallo



Step No.	Time	Activity/Remarks	TC/TLM	Display/ Branch
5		Verify HCS1 OFF		Next Step: END
		Verify Telemetry Grp13Heat1_S WM71G565	= OFF	AND=WAHT3584
6		Switch OFF HCS2		Next Step: 7
		Execute Telecommand SwOff_RWA4_G13H2 TC Control Flags : GBM IL DSE --Y -- --- Subsch. ID : 10 Det. descr. : PCDU:TC(8,4,112,3) switch Off RWA 4 Group 13 HCS 2	DCE18170	
7		Verify HCS2 OFF		Next Step: END
		Verify Telemetry RWA4_G13H2_S WM71H565	= OFF	AND=WAHT3584
8		Switch OFF HCS3		Next Step: 9
		Execute Telecommand SwOff_RWA1_G13H3 TC Control Flags : GBM IL DSE --Y -- --- Subsch. ID : 10 Det. descr. : PCDU:TC(8,4,112,3) switch Off RWA 1 Group 13 HCS 3	DCE19170	
9		Verify HCS3 OFF		Next Step: END
		Verify Telemetry RWA1_G13H3_S WM71J565	= OFF	AND=WAHT3584
10		Switch OFF HCS4		Next Step: 11
		Execute Telecommand SwOff_RWA3_G13H4 TC Control Flags : GBM IL DSE --Y -- --- Subsch. ID : 10 Det. descr. : PCDU:TC(8,4,112,3) switch Off RWA 3 Group 13 HCS 4	DCE20170	

Switch OFF HCS of HPS13  
 File: H\_CRP\_TCS\_13H0.xls  
 Author: E. Picallo



Step No.	Time	Activity/Remarks	TC/TLM	Display/ Branch
11		Verify HCS4 OFF		Next Step: END
		Verify Telemetry RWA3_G13H4_S WM71K565	= OFF	AND=WAHT3584
12		Switch OFF HCS5		Next Step: 13
		Execute Telecommand SwOff_FHWEV_G13H5 TC Control Flags : Subsch. ID : 10 Det. descr. : PCDU:TC(8,4,112,3) switch Off FHWEV Group 13 HCS 5	DCE21170 GBM IL DSE --Y -- --	
13		Verify HCS5 OFF		Next Step: END
		Verify Telemetry FHWIV_G13H5_S WM71L565	= OFF	AND=WAHT3584
14		Switch OFF HCS6		Next Step: 15
		Execute Telecommand SwOff_RWA2_G13H6 TC Control Flags : Subsch. ID : 10 Det. descr. : PCDU:TC(8,4,112,3) switch Off RWA 2 Group 13 HCS 6	DCE22170 GBM IL DSE --Y -- --	
15		Verify HCS6 OFF		Next Step: END
		Verify Telemetry RWA2_G13H6_S WM71M565	= OFF	AND=WAHT3584
<b>End of Procedure</b>				