

Switch OFF HCS of HPS12
 File: H_CRP_TCS_12H0.xls
 Author: E. Picallo



Procedure Summary

Objectives

This procedure describes the steps needed to switch OFF a selected Heater Control Switch (HCS) of HPS12.

The location units of the HCSs belonging to HPS12 are the following:

- HCS1: STR
- HCS2: Battery
- HCS3: FHWOH
- HCS4: FHWEH
- HCS5: FCV C1A
- HCS6: FCV A2A

Nominally the temperature control, and therefore the HCSs ON/OFF commanding, is managed by the CDMU ASW and it is driven through the Thermal Control Table (TCT).

Summary of Constraints

The selected HCS is switched OFF through ASW TC(8,4,112,3); thus the status of the ASW function "PCDU Management" has to be "running".

Spacecraft Configuration

Start of Procedure

CDMU in default configuration;
 HPS12 ON;
 HCS ON.

End of Procedure

CDMU in default configuration;
 HPS12 ON;
 HCS switched OFF.

Reference File(s)

Input Command Sequences

Output Command Sequences

HRT12H0

Referenced Displays

ANDs GRDs SLDs
 WAHT2584

Configuration Control Information

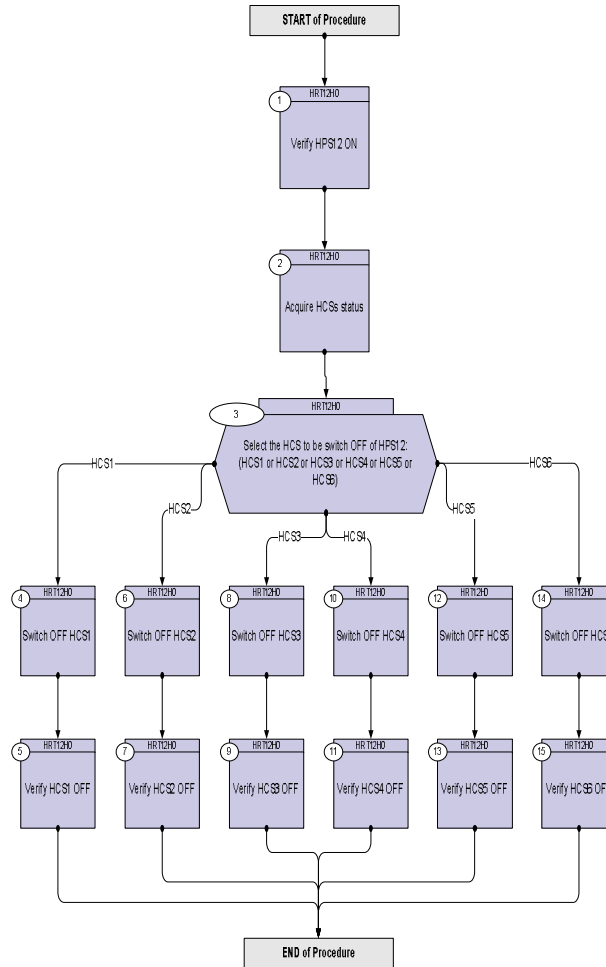
DATE	FOP ISSUE	VERSION	MODIFICATION DESCRIPTION	AUTHOR	SPR REF
16/02/09	2.1	1	Created	E. Picallo	

Status : Version 1 - Unchanged
 Last Checkin: 16/02/09

Switch OFF HCS of HPS12
 File: H_CRP_TCS_12H0.xls
 Author: E. Picallo



Procedure Flowchart Overview



Switch OFF HCS of HPS12
 File: H_CRP_TCS_12H0.xls
 Author: E. Picallo



Step No.	Time	Activity/Remarks	TC/TLM	Display/ Branch
Beginning of Procedure				
TC Seq. Name :HRT12H0 (Switch OFF HCS HPS12)				
TimeTag Type: N				
Sub Schedule ID:				
□				
1		Verify HPS12 ON		Next Step: 2
		Verify Telemetry GRP12_HPS_STS WM72G565 = ON		AND=WAHT2584
2		Acquire HCSs status		Next Step: 3
		Verify Telemetry STR_G12H1_S WM71A565		AND=WAHT2584
		Verify Telemetry BATTconG12H2_S WM71B565		AND=WAHT2584
		Verify Telemetry FHWOH_G12H3_S WM71C565		AND=WAHT2584
		Verify Telemetry FHWEH_G12H4_S WM71D565		AND=WAHT2584
		Verify Telemetry FcvC1A_G12H5_S WM71E565		AND=WAHT2584
		Verify Telemetry FcvA2A_G12H6_S WM71F565		AND=WAHT2584
3		Select the HCS to be switch OFF of HPS12: (HCS1 or HCS2 or HCS3 or HCS4 or HCS5 or HCS6)		Next Step: HCS1 4 HCS2 6 HCS3 8 HCS4 10 HCS5 12 HCS6 14
4		Switch OFF HCS1		Next Step: 5
		Execute Telecommand SwOff_STR_G12H1 TC Control Flags : GBM IL DSE --Y -- -- Subsch. ID : 10 Det. descr. : PCDU:TC(8,4,112,3) switch Off STR Group 12 HCS 1	DCE11170	

Switch OFF HCS of HPS12
 File: H_CRP_TCS_12H0.xls
 Author: E. Picallo



Step No.	Time	Activity/Remarks	TC/TLM	Display/ Branch
5		Verify HCS1 OFF		Next Step: END
		Verify Telemetry STR_G12H1_S WM71A565	= OFF	AND=WAHT2584
6		Switch OFF HCS2		Next Step: 7
		Execute Telecommand SwOff_BATTconn_G12H2 TC Control Flags : GBM IL DSE --Y -- -- Subsch. ID : 10 Det. descr. : PCDU:TC(8,4,112,3) switch Off BATTERY Connector Group 12 HCS 2	DCE12170	
7		Verify HCS2 OFF		Next Step: END
		Verify Telemetry BATTconG12H2_S WM71B565	= OFF	AND=WAHT2584
8		Switch OFF HCS3		Next Step: 9
		Execute Telecommand SwOff_FHWOH_G12H3 TC Control Flags : GBM IL DSE --Y -- -- Subsch. ID : 10 Det. descr. : PCDU:TC(8,4,112,3) switch Off FHWOH Group 12 HCS 3	DCE13170	
9		Verify HCS3 OFF		Next Step: END
		Verify Telemetry FHWOH_G12H3_S WM71C565	= OFF	AND=WAHT2584
10		Switch OFF HCS4		Next Step: 11
		Execute Telecommand SwOff_FHWEH_G12H4 TC Control Flags : GBM IL DSE --Y -- -- Subsch. ID : 10 Det. descr. : PCDU:TC(8,4,112,3) switch Off FHWEH Group 12 HCS 4	DCE14170	

