

Switch ON HCS of HPS11
 File: H_CRP_TCS_11H1.xls
 Author: E. Picallo



Procedure Summary

Objectives

This procedure describes the steps needed to switch ON a selected Heater Control Switch (HCS) of HPS11.

The location units of the HCSs belonging to HPS11 are the following:

- HCS1: FHHRV
- HCS2: FCV C3A
- HCS3: RCS piping
- HCS4: STR 2 baffle
- HCS5: RCS piping
- HCS6: FHLCU

Nominally the temperature control, and therefore the HCSs ON/OFF commanding, is managed by the CDMU ASW and it is driven through the Thermal Control Table (TCT).

Summary of Constraints

The selected HCS is switched ON through ASW TC(8,4,112,5); thus the status of the ASW function "PCDU Management" has to be "running".

Spacecraft Configuration

Start of Procedure

CDMU in default configuration;
 HPS11 ON;
 HCS OFF.

End of Procedure

CDMU in default configuration;
 HPS11 ON;
 HCS switched ON.

Reference File(s)

Input Command Sequences

Output Command Sequences

HRT11H1

Referenced Displays

ANDs GRDs SLDs
 WAHT2584

Configuration Control Information

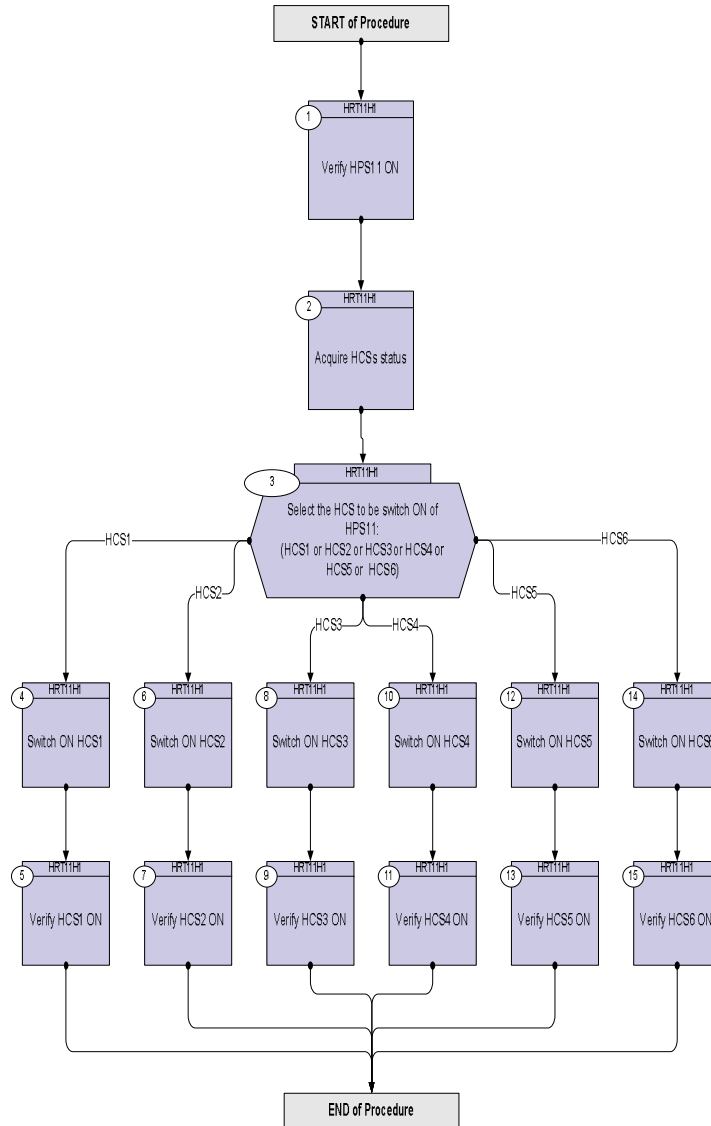
DATE	FOP ISSUE	VERSION	MODIFICATION DESCRIPTION	AUTHOR	SPR REF
16/02/09	2.1	1	Created	E. Picallo	

Status : Version 1 - Unchanged
 Last Checkin: 16/02/09

Switch ON HCS of HPS11
 File: H_CRP_TCS_11H1.xls
 Author: E. Picallo



Procedure Flowchart Overview



Switch ON HCS of HPS11
 File: H_CRP_TCS_11H1.xls
 Author: E. Picallo



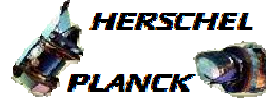
Step No.	Time	Activity/Remarks	TC/TLM	Display/ Branch
Beginning of Procedure				
TC Seq. Name : HRT11H1 (Switch ON HCS HPS11)				
TimeTag Type: N Sub Schedule ID: □				
1		Verify HPS11 ON		Next Step: 2
		Verify Telemetry GRP11_HPS_STS WM62H565 = ON		AND=WAHT2584
2		Acquire HCSs status		Next Step: 3
		Verify Telemetry FHHRV_G11H1_S WM61G565		AND=WAHT2584
		Verify Telemetry FcvC3A_G11H2_S WM61H565		AND=WAHT2584
		Verify Telemetry RCSpipG11H3_S WM61J565		AND=WAHT2584
		Verify Telemetry STR2baffG11H4_S WM61K565		AND=WAHT2584
		Verify Telemetry RCSpipG11H5_S WM61L565		AND=WAHT2584
		Verify Telemetry FHLCU_G11H6_S WM61M565		AND=WAHT2584
3		Select the HCS to be switch ON of HPS11: (HCS1 or HCS2 or HCS3 or HCS4 or HCS5 or HCS6)		Next Step: HCS1 4 HCS2 6 HCS3 8 HCS4 10 HCS5 12 HCS6 14
4		Switch ON HCS1		Next Step: 5
		Execute Telecommand SwOn_FHHRV_G11H1 TC Control Flags : GBM IL DSE --Y -- -- Subsch. ID : 10 Det. descr. : PCDU:TC(8,4,112,5) switch On FHHRV Group 11 HCS 1	DCC79170	

Switch ON HCS of HPS11
 File: H_CRP_TCS_11H1.xls
 Author: E. Picallo



Step No.	Time	Activity/Remarks	TC/TLM	Display/ Branch
5		Verify HCS1 ON		Next Step: END
		Verify Telemetry FHRV_G11H1_S WM61G565	= ON	AND=WAHT2584
6		Switch ON HCS2		Next Step: 7
		Execute Telecommand SwOn_FCV_C3A_G11H2 TC Control Flags : GBM IL DSE --Y -- --- Subsch. ID : 10 Det. descr. : PCDU:TC(8,4,112,5) switch On FCV C3A Group 11 HCS 2	DCC80170	
7		Verify HCS2 ON		Next Step: END
		Verify Telemetry FcvC3A_G11H2_S WM61H565	= ON	AND=WAHT2584
8		Switch ON HCS3		Next Step: 9
		Execute Telecommand SwOn_RCSpip_G11H3 TC Control Flags : GBM IL DSE --Y -- --- Subsch. ID : 10 Det. descr. : PCDU:TC(8,4,112,5) switch On RCS piping Group 11 HCS 3	DCC81170	
9		Verify HCS3 ON		Next Step: END
		Verify Telemetry RCSpipG11H3_S WM61J565	= ON	AND=WAHT2584
10		Switch ON HCS4		Next Step: 11
		Execute Telecommand SwOn_STR2baffle_G11H4 TC Control Flags : GBM IL DSE --Y -- --- Subsch. ID : 10 Det. descr. : PCDU:TC(8,4,112,5) switch On STR2 baffle Group 11 HCS 4	DCC82170	

Switch ON HCS of HPS11
 File: H_CRP_TCS_11H1.xls
 Author: E. Picallo



Step No.	Time	Activity/Remarks	TC/TLM	Display/ Branch
11		Verify HCS4 ON		Next Step: END
		Verify Telemetry STR2baffG11H4_S WM61K565	= ON	AND=WAHT2584
12		Switch ON HCS5		Next Step: 13
		Execute Telecommand SwOn_RCSpip_G11H5 TC Control Flags : Subsch. ID : 10 Det. descr. : PCDU:TC(8,4,112,5) switch On RCS piping Group 11 HCS 5	DCC83170 GBM IL DSE --Y -- --	
13		Verify HCS5 ON		Next Step: END
		Verify Telemetry RCSpipG11H5_S WM61L565	= ON	AND=WAHT2584
14		Switch ON HCS6		Next Step: 15
		Execute Telecommand SwOn_FHLCU_G11H6 TC Control Flags : Subsch. ID : 10 Det. descr. : PCDU:TC(8,4,112,5) switch On FHLCU Group 11 HCS 6	DCC84170 GBM IL DSE --Y -- --	
15		Verify HCS6 ON		Next Step: END
		Verify Telemetry FHLCU_G11H6_S WM61M565	= ON	AND=WAHT2584
End of Procedure				