

Switch OFF HCS of HPS11
 File: H_CRP_TCS_11H0.xls
 Author: E. Picallo



Procedure Summary

Objectives

This procedure describes the steps needed to switch OFF a selected Heater Control Switch (HCS) of HPS11.

The location units of the HCSs belonging to HPS11 are the following:

- HCS1: FHHRV
- HCS2: FCV C3A
- HCS3: RCS piping
- HCS4: STR 2 baffle
- HCS5: RCS piping
- HCS6: FHLCU

Nominally the temperature control, and therefore the HCSs ON/OFF commanding, is managed by the CDMU ASW and it is driven through the Thermal Control Table (TCT).

Summary of Constraints

The selected HCS is switched OFF through ASW TC(8,4,112,3); thus the status of the ASW function "PCDU Management" has to be "running".

Spacecraft Configuration

Start of Procedure

CDMU in default configuration;
 HPS11 ON;
 HCS ON.

End of Procedure

CDMU in default configuration;
 HPS11 ON;
 HCS switched OFF.

Reference File(s)

Input Command Sequences

Output Command Sequences

HRT11H0

Referenced Displays

ANDs GRDs SLDs
 WAHT2584

Configuration Control Information

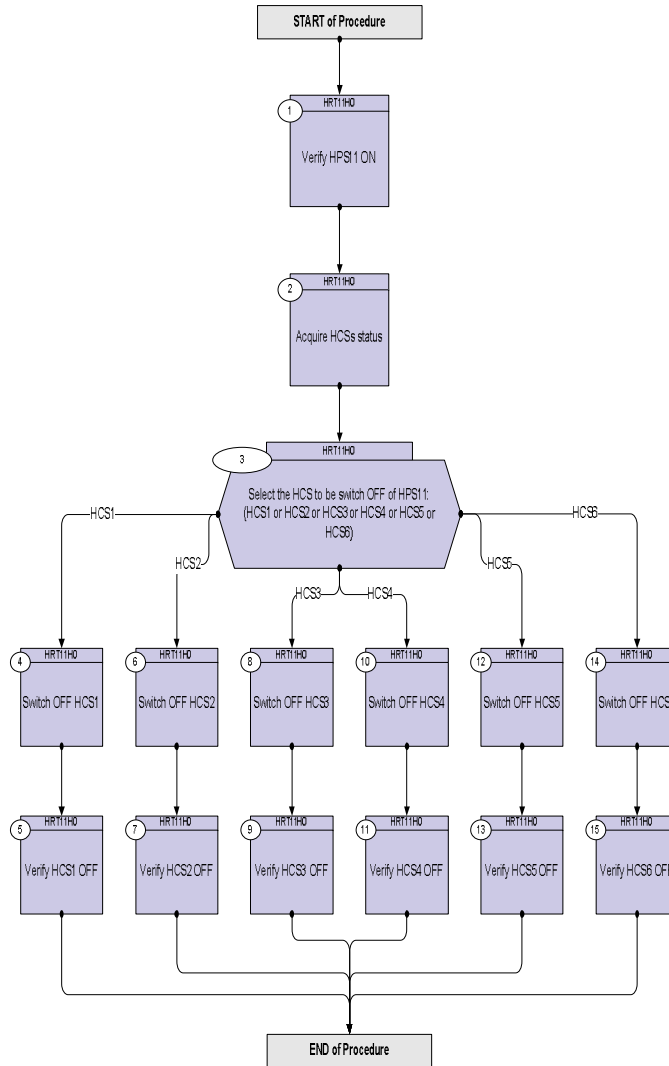
DATE	FOP ISSUE	VERSION	MODIFICATION DESCRIPTION	AUTHOR	SPR REF
16/02/09	2.1	1	Created	E. Picallo	

Status : Version 1 - Unchanged
 Last Checkin: 16/02/09

Switch OFF HCS of HPS11
 File: H_CRP_TCS_11H0.xls
 Author: E. Picallo



Procedure Flowchart Overview



Switch OFF HCS of HPS11
 File: H_CRP_TCS_11H0.xls
 Author: E. Picallo



Step No.	Time	Activity/Remarks	TC/TLM	Display/ Branch
Beginning of Procedure				
TC Seq. Name :HRT11H0 (Switch OFF HCS HPS11)				
TimeTag Type: N				
Sub Schedule ID:				
□				
1		Verify HPS11 ON		Next Step: 2
		Verify Telemetry GRP11_HPS_STS WM62H565 = ON		AND=WAHT2584
2		Acquire HCSs status		Next Step: 3
		Verify Telemetry FHHRV_G11H1_S WM61G565		AND=WAHT2584
		Verify Telemetry FcvC3A_G11H2_S WM61H565		AND=WAHT2584
		Verify Telemetry RCSpipG11H3_S WM61J565		AND=WAHT2584
		Verify Telemetry STR2baffG11H4_S WM61K565		AND=WAHT2584
		Verify Telemetry RCSpipG11H5_S WM61L565		AND=WAHT2584
		Verify Telemetry FHLCU_G11H6_S WM61M565		AND=WAHT2584
3		Select the HCS to be switch OFF of HPS11: (HCS1 or HCS2 or HCS3 or HCS4 or HCS5 or HCS6)		Next Step: HCS1 4 HCS2 6 HCS3 8 HCS4 10 HCS5 12 HCS6 14
4		Switch OFF HCS1		Next Step: 5
		Execute Telecommand SwOff_FHHRV_G11H1 TC Control Flags : Subsch. ID : 10 Det. descr. : PCDU:TC(8,4,112,3) switch Off FHHRV Group 11 HCS 1	DCE05170	
		GBM IL DSE --Y -- --		

Switch OFF HCS of HPS11
 File: H_CRP_TCS_11H0.xls
 Author: E. Picallo



Step No.	Time	Activity/Remarks	TC/TLM	Display/ Branch
5		Verify HCS1 OFF		Next Step: END
		Verify Telemetry FHHRV_G11H1_S WM61G565	= OFF	AND=WAHT2584
6		Switch OFF HCS2		Next Step: 7
		Execute Telecommand SwOff_FCV_C3A_G11H2 TC Control Flags : GBM IL DSE --Y -- --- Subsch. ID : 10 Det. descr. : PCDU:TC(8,4,112,3) switch Off FCV C3A Group 11 HCS 2	DCE06170	
7		Verify HCS2 OFF		Next Step: END
		Verify Telemetry FcvC3A_G11H2_S WM61H565	= OFF	AND=WAHT2584
8		Switch OFF HCS3		Next Step: 9
		Execute Telecommand SwOff_RCSpip_G11H3 TC Control Flags : GBM IL DSE --Y -- --- Subsch. ID : 10 Det. descr. : PCDU:TC(8,4,112,3) switch Off RCS piping Group 11 HCS 3	DCE07170	
9		Verify HCS3 OFF		Next Step: END
		Verify Telemetry RCSpipG11H3_S WM61J565	= OFF	AND=WAHT2584
10		Switch OFF HCS4		Next Step: 11
		Execute Telecommand SwOff_STR2baffle_G11H4 TC Control Flags : GBM IL DSE --Y -- --- Subsch. ID : 10 Det. descr. : PCDU:TC(8,4,112,3) switch Off STR2 baffle Group 11 HCS 4	DCE08170	

Switch OFF HCS of HPS11
 File: H_CRP_TCS_11H0.xls
 Author: E. Picallo



Step No.	Time	Activity/Remarks	TC/TLM	Display/ Branch
11		Verify HCS4 OFF		Next Step: END
		Verify Telemetry STR2baffG11H4_S WM61K565	= OFF	AND=WAHT2584
12		Switch OFF HCS5		Next Step: 13
		Execute Telecommand SwOff_RCSpip_G11H5	DCE09170	
		TC Control Flags : Subsch. ID : 10 Det. descr. : PCDU:TC(8,4,112,3) switch Off RCS piping Group 11 HCS 5	GBM IL DSE --Y -- --	
13		Verify HCS5 OFF		Next Step: END
		Verify Telemetry RCSpipG11H5_S WM61L565	= OFF	AND=WAHT2584
14		Switch OFF HCS6		Next Step: 15
		Execute Telecommand SwOff_FHLCU_G11H6	DCE10170	
		TC Control Flags : Subsch. ID : 10 Det. descr. : PCDU:TC(8,4,112,3) switch Off FHLCU Group 11 HCS 6	GBM IL DSE --Y -- --	
15		Verify HCS6 OFF		Next Step: END
		Verify Telemetry FHLCU_G11H6_S WM61M565	= OFF	AND=WAHT2584
End of Procedure				