

Switch ON HCS of HPS10  
 File: H\_CRP\_TCS\_10H1.xls  
 Author: E. Picallo



## Procedure Summary

### Objectives

This procedure describes the steps needed to switch ON a selected Heater Control Switch (HCS) of HPS10.

The location units of the HCSs belonging to HPS10 are the following:

- HCS1: Decontamination 2
- HCS2: Tank -Y
- HCS3: FCV C4A
- HCS4: FHLSU
- HCS5: STR 1 baffle
- HCS6: Tank +Y

Nominally the temperature control, and therefore the HCSs ON/OFF commanding, is managed by the CDMU ASW and it is driven through the Thermal Control Table (TCT).

### Summary of Constraints

The selected HCS is switched ON through ASW TC(8,4,112,5); thus the status of the ASW function "PCDU Management" has to be "running".

### Spacecraft Configuration

#### Start of Procedure

CDMU in default configuration;  
 HPS10 ON;  
 HCS OFF.

#### End of Procedure

CDMU in default configuration;  
 HPS10 ON;  
 HCS switched ON.

### Reference File(s)

#### Input Command Sequences

#### Output Command Sequences

HRT10H1

### Referenced Displays

ANDs      GRDs      SLDs  
 WAHT2584

### Configuration Control Information

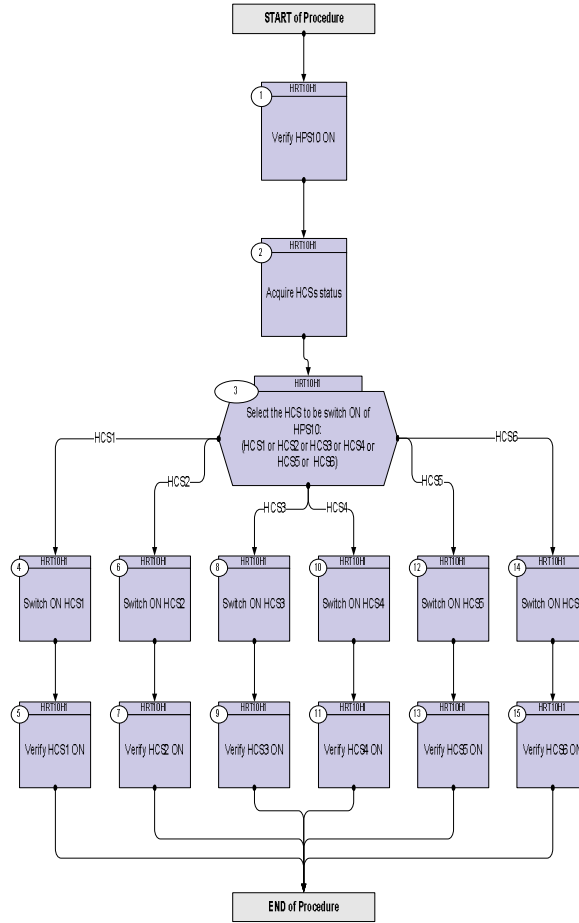
DATE	FOP ISSUE	VERSION	MODIFICATION DESCRIPTION	AUTHOR	SPR REF
16/02/09	2.1	1	Created	E. Picallo	

Status : Version 1 - Unchanged  
 Last Checkin: 16/02/09

Switch ON HCS of HPS10  
 File: H\_CRP\_TCS\_10H1.xls  
 Author: E. Picallo



## Procedure Flowchart Overview

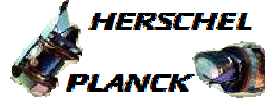


Switch ON HCS of HPS10  
 File: H\_CRP\_TCS\_10H1.xls  
 Author: E. Picallo



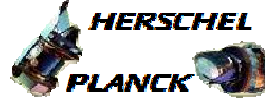
Step No.	Time	Activity/Remarks	TC/TLM	Display/ Branch
<b>Beginning of Procedure</b>				
TC Seq. Name :HRT10H1 (Switch ON HCS HPS10)				
TimeTag Type: N				
Sub Schedule ID:				
□				
1		Verify HPS10 ON		Next Step: 2
		Verify Telemetry GRP10_HPS_STS WM62G565 = ON		AND=WAHT2584
2		Acquire HCSs status		Next Step: 3
		Verify Telemetry Decon2_G10H1_S WM61A565		AND=WAHT2584
		Verify Telemetry tank-Y_G10H2_S WM61B565		AND=WAHT2584
		Verify Telemetry FcvC4A_G10H3_S WM61C565		AND=WAHT2584
		Verify Telemetry FHLSU_G10H4_S WM61D565		AND=WAHT2584
		Verify Telemetry STR1baffG10H5_S WM61E565		AND=WAHT2584
		Verify Telemetry tank+Y_G10H6_S WM61F565		AND=WAHT2584
3		Select the HCS to be switch ON of HPS10: (HCS1 or HCS2 or HCS3 or HCS4 or HCS5 or HCS6)		Next Step: HCS1 4 HCS2 6 HCS3 8 HCS4 10 HCS5 12 HCS6 14
4		Switch ON HCS1		Next Step: 5
		Execute Telecommand SwOn_Decont_2_G10H1  TC Control Flags :  Subsch. ID : 10 Det. descr. : PCDU:TC(8,4,112,5) switch On Decontamination 2 Group 10 HCS 1	DCC73170	
		GBM IL DSE --Y -- --		

Switch ON HCS of HPS10  
 File: H\_CRP\_TCS\_10H1.xls  
 Author: E. Picallo



Step No.	Time	Activity/Remarks	TC/TLM	Display/ Branch
5		Verify HCS1 ON		Next Step: END
		Verify Telemetry Decon2_G10H1_s WM61A565	= ON	AND=WAHT2584
6		Switch ON HCS2		Next Step: 7
		Execute Telecommand SwOn_tank-Y_G10H2 TC Control Flags : GBM IL DSE --Y -- --- Subsch. ID : 10 Det. descr. : PCDU:TC(8,4,112,5) switch On Tank -Y Group 10 HCS 2	DCC74170	
7		Verify HCS2 ON		Next Step: END
		Verify Telemetry tank-Y_G10H2_s WM61B565	= ON	AND=WAHT2584
8		Switch ON HCS3		Next Step: 9
		Execute Telecommand SwOn_FCV_C4A_G10H3 TC Control Flags : GBM IL DSE --Y -- --- Subsch. ID : 10 Det. descr. : PCDU:TC(8,4,112,5) switch On FCV C4A Group 10 HCS 3	DCC75170	
9		Verify HCS3 ON		Next Step: END
		Verify Telemetry FcvC4A_G10H3_s WM61C565	= ON	AND=WAHT2584
10		Switch ON HCS4		Next Step: 11
		Execute Telecommand SwOn_FHLSU_G10H4 TC Control Flags : GBM IL DSE --Y -- --- Subsch. ID : 10 Det. descr. : PCDU:TC(8,4,112,5) switch On FHLSU Group 10 HCS 4	DCC76170	

Switch ON HCS of HPS10  
 File: H\_CRP\_TCS\_10H1.xls  
 Author: E. Picallo



Step No.	Time	Activity/Remarks	TC/TLM	Display/ Branch
11		Verify HCS4 ON		Next Step: END
		Verify Telemetry FHL SU_G10H4_S WM61D565	= ON	AND=WAHT2584
12		Switch ON HCS5		Next Step: 13
		Execute Telecommand SwOn_STR1baffle_G10H5  TC Control Flags : GBM IL DSE --Y -- --  Subsch. ID : 10 Det. descr. : PCDU:TC(8,4,112,5) switch On STR1 baffle Group 10 HCS 5	DCC77170	
13		Verify HCS5 ON		Next Step: END
		Verify Telemetry STR1baffG10H5_S WM61E565	= ON	AND=WAHT2584
14		Switch ON HCS6		Next Step: 15
		Execute Telecommand SwOn_tank+Y_G10H6  TC Control Flags : GBM IL DSE --Y -- --  Subsch. ID : 10 Det. descr. : PCDU:TC(8,4,112,5) switch On Tank +Y Group 10 HCS 6	DCC78170	
15		Verify HCS6 ON		Next Step: END
		Verify Telemetry tank+Y_G10H6_S WM61F565	= ON	AND=WAHT2584
<b>End of Procedure</b>				