

Switch OFF HCS of HPS10
 File: H_CRP_TCS_10H0.xls
 Author: E. Picallo



Procedure Summary

Objectives

This procedure describes the steps needed to switch OFF a selected Heater Control Switch (HCS) of HPS10.

The location units of the HCSs belonging to HPS10 are the following:

- HCS1: Decontamination 2
- HCS2: Tank -Y
- HCS3: FCV C4A
- HCS4: FHLSU
- HCS5: STR 1 baffle
- HCS6: Tank +Y

Nominally the temperature control, and therefore the HCSs ON/OFF commanding, is managed by the CDMU ASW and it is driven through the Thermal Control Table (TCT).

Summary of Constraints

The selected HCS is switched OFF through ASW TC(8,4,112,3); thus the status of the ASW function "PCDU Management" has to be "running".

Spacecraft Configuration

Start of Procedure

CDMU in default configuration;
 HPS10 ON;
 HCS ON.

End of Procedure

CDMU in default configuration;
 HPS10 ON;
 HCS switched OFF.

Reference File(s)

Input Command Sequences

Output Command Sequences

HRT10H0

Referenced Displays

ANDs GRDs SLDs
 WAHT2584

Configuration Control Information

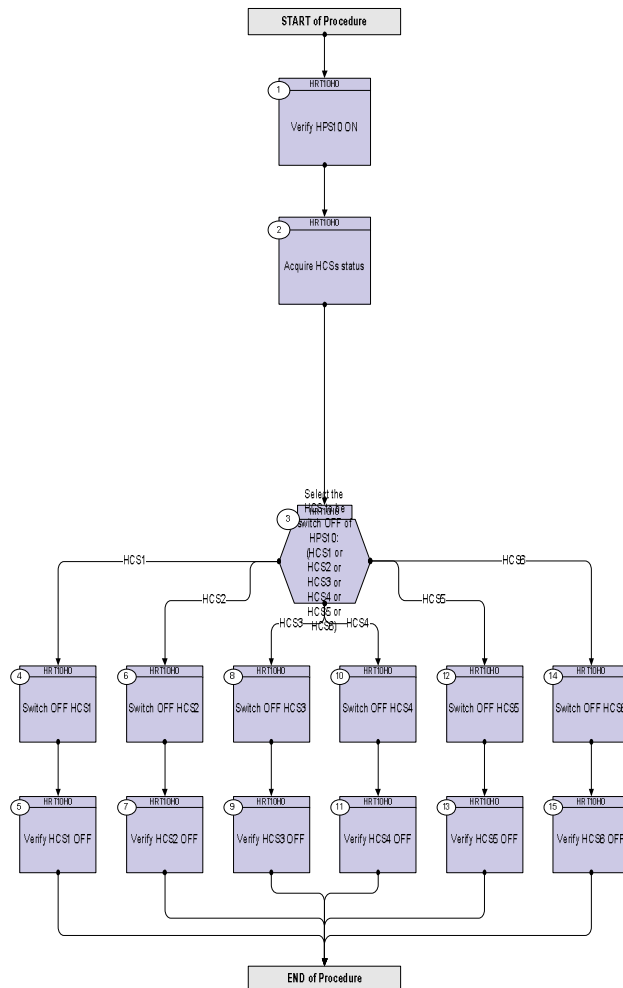
DATE	FOP ISSUE	VERSION	MODIFICATION DESCRIPTION	AUTHOR	SPR REF
16/02/09	2.1	1	Created	E. Picallo	

Status : Version 1 - Unchanged
 Last Checkin: 16/02/09

Switch OFF HCS of HPS10
 File: H_CRP_TCS_10H0.xls
 Author: E. Picallo



Procedure Flowchart Overview



Switch OFF HCS of HPS10
 File: H_CRP_TCS_10H0.xls
 Author: E. Picallo



Step No.	Time	Activity/Remarks	TC/TLM	Display/ Branch
Beginning of Procedure				
TC Seq. Name :HRT10H0 (Switch OFF HCS HPS10)				
TimeTag Type: N				
Sub Schedule ID:				
□				
1		Verify HPS10 ON		Next Step: 2
		Verify Telemetry GRP10_HPS_STS WM62G565 = ON		AND=WAHT2584
2		Acquire HCSs status		Next Step: 3
		Verify Telemetry Decon2_G10H1_S WM61A565		AND=WAHT2584
		Verify Telemetry tank-Y_G10H2_S WM61B565		AND=WAHT2584
		Verify Telemetry Fcvc4A_G10H3_S WM61C565		AND=WAHT2584
		Verify Telemetry FHLSU_G10H4_S WM61D565		AND=WAHT2584
		Verify Telemetry STR1baffG10H5_S WM61E565		AND=WAHT2584
		Verify Telemetry tank+Y_G10H6_S WM61F565		AND=WAHT2584
3		Select the HCS to be switch OFF of HPS10: (HCS1 or HCS2 or HCS3 or HCS4 or HCS5 or HCS6)		Next Step: HCS1 4 HCS2 6 HCS3 8 HCS4 10 HCS5 12 HCS6 14
4		Switch OFF HCS1		Next Step: 5
		Execute Telecommand SwOff_Decont_2_G10H1 TC Control Flags : Subsch. ID : 0 Det. descr. : PCDU:TC(8,4,112,3) switch Off Decontamination 2 Group 10 HCS 1	DCD99170	

Switch OFF HCS of HPS10
 File: H_CRP_TCS_10H0.xls
 Author: E. Picallo



Step No.	Time	Activity/Remarks	TC/TLM	Display/ Branch
5		Verify HCS1 OFF		Next Step: END
		Verify Telemetry Decon2_G10H1_s WM61A565	= OFF	AND=WAHT2584
6		Switch OFF HCS2		Next Step: 7
		Execute Telecommand SwOff_tank-Y_G10H2 TC Control Flags : Subsch. ID : 0 Det. descr. : PCDU:TC(8,4,112,3) switch Off Tank -Y Group 10 HCS 2	DCE00170 GBM IL DSE --Y -- ---	
7		Verify HCS2 OFF		Next Step: END
		Verify Telemetry tank-Y_G10H2_s WM61B565	= OFF	AND=WAHT2584
8		Switch OFF HCS3		Next Step: 9
		Execute Telecommand SwOff_FCV_C4A_G10H3 TC Control Flags : Subsch. ID : 0 Det. descr. : PCDU:TC(8,4,112,3) switch Off FCV C4A Group 10 HCS 3	DCE01170 GBM IL DSE --Y -- ---	
9		Verify HCS3 OFF		Next Step: END
		Verify Telemetry FcvC4A_G10H3_s WM61C565	= OFF	AND=WAHT2584
10		Switch OFF HCS4		Next Step: 11
		Execute Telecommand SwOff_FHLSU_G10H4 TC Control Flags : Subsch. ID : 0 Det. descr. : PCDU:TC(8,4,112,3) switch Off FHLSU Group 10 HCS 4	DCE02170 GBM IL DSE --Y -- ---	

Switch OFF HCS of HPS10
 File: H_CRP_TCS_10H0.xls
 Author: E. Picallo



Step No.	Time	Activity/Remarks	TC/TLM	Display/ Branch
11		Verify HCS4 OFF		Next Step: END
		Verify Telemetry FHL SU_G10H4_S WM61D565	= OFF	AND=WAHT2584
12		Switch OFF HCS5		Next Step: 13
		Execute Telecommand SwOff_STR1baffle_G10H5 TC Control Flags : GBM IL DSE --Y -- -- Subsch. ID : 0 Det. descr. : PCDU:TC(8,4,112,3) switch Off STR1 baffle Group 10 HCS 5	DCE03170	
13		Verify HCS5 OFF		Next Step: END
		Verify Telemetry STR1baffG10H5_S WM61E565	= OFF	AND=WAHT2584
14		Switch OFF HCS6		Next Step: 15
		Execute Telecommand SwOff_tank+Y_G10H6 TC Control Flags : GBM IL DSE --Y -- -- Subsch. ID : 0 Det. descr. : PCDU:TC(8,4,112,3) switch Off Tank +Y Group 10 HCS 6	DCE04170	
15		Verify HCS6 OFF		Next Step: END
		Verify Telemetry tank+Y_G10H6_S WM61F565	= OFF	AND=WAHT2584
End of Procedure				