

Switch ON HCS of HPS9
 File: H_CRP_TCS_09H1.xls
 Author: E. Picallo



Procedure Summary

Objectives

This procedure describes the steps needed to switch ON a selected Heater Control Switch (HCS) of HPS9.

The location units of the HCSs belonging to HPS9 are the following:

- HCS1: Decontamination 8
- HCS2: Tank -Y
- HCS3: FCV C4A
- HCS4: FHLSU
- HCS5: STR 1 baffle
- HCS6: Tank +Y

Nominally the temperature control, and therefore the HCSs ON/OFF commanding, is managed by the CDMU ASW and it is driven through the Thermal Control Table (TCT).

Summary of Constraints

The selected HCS is switched ON through ASW TC(8,4,112,5); thus the status of the ASW function "PCDU Management" has to be "running".

Spacecraft Configuration

Start of Procedure

CDMU in default configuration;
 HPS9 ON;
 HCS OFF.

End of Procedure

CDMU in default configuration;
 HPS9 ON;
 HCS switched ON.

Reference File(s)

Input Command Sequences

Output Command Sequences

HRT09H1

Referenced Displays

ANDs GRDs SLDs
 WAHT2584

Configuration Control Information

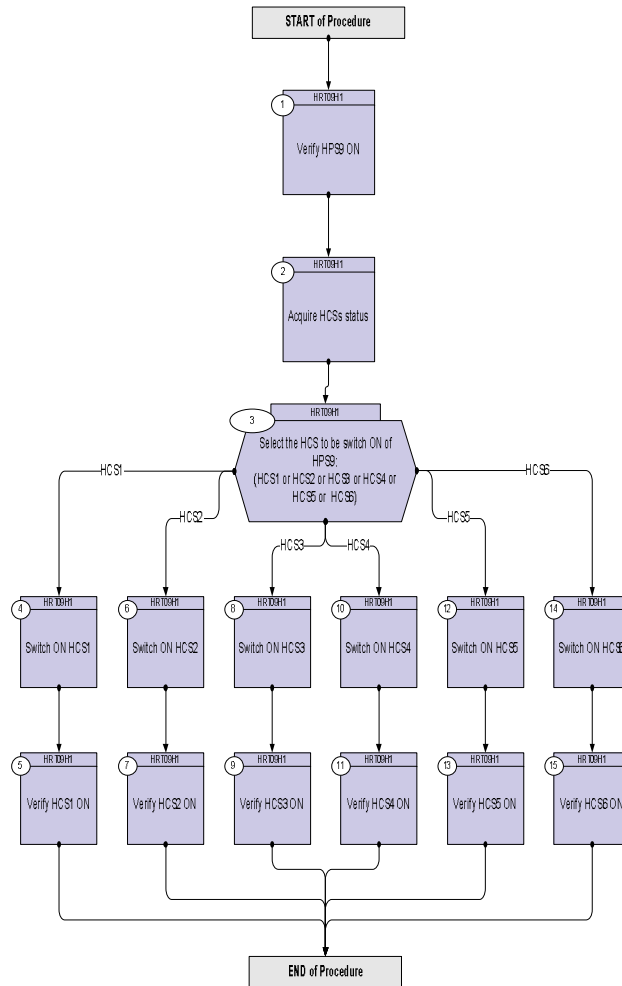
DATE	FOP ISSUE	VERSION	MODIFICATION DESCRIPTION	AUTHOR	SPR REF
16/02/09		1	Created	E. Picallo	
27/02/09	2.1	2	Template update	E. Picallo	

Status : Version 2 - Unchanged
 Last Checkin: 27/02/09

Switch ON HCS of HPS9
 File: H_CRP_TCS_09H1.xls
 Author: E. Picallo



Procedure Flowchart Overview



Switch ON HCS of HPS9
 File: H_CRP_TCS_09H1.xls
 Author: E. Picallo



Step No.	Time	Activity/Remarks	TC/TLM	Display/ Branch
Beginning of Procedure				
TC Seq. Name : HRT09H1 (Switch ON HCS HPS9)				
TimeTag Type: N Sub Schedule ID: □				
1		Verify HPS9 ON		Next Step: 2
		Verify Telemetry GRP9_HPS_STS WM52H565 = ON		AND=WAHT2584
2		Acquire HCSs status		Next Step: 3
		Verify Telemetry Decon8_G9H1_S WM51G565		AND=WAHT2584
		Verify Telemetry tank-Y_G9H2_S WM51H565		AND=WAHT2584
		Verify Telemetry FcvC4A_G9H3_S WM51J565		AND=WAHT2584
		Verify Telemetry FHLSU_G9H4_S WM51K565		AND=WAHT2584
		Verify Telemetry STR1baffG9H5_S WM51L565		AND=WAHT2584
		Verify Telemetry tank+Y_G9H6_S WM51M565		AND=WAHT2584
3		Select the HCS to be switch ON of HPS9: (HCS1 or HCS2 or HCS3 or HCS4 or HCS5 or HCS6)		Next Step: HCS1 4 HCS2 6 HCS3 8 HCS4 10 HCS5 12 HCS6 14
4		Switch ON HCS1		Next Step: 5
		Execute Telecommand SwOn_Decont_8_G9H1 TC Control Flags : GBM IL DSE --Y -- -- Subsch. ID : 10 Det. descr. : PCDU:TC(8,4,112,5) switch On Decontamination 8 Group 9 HCS 1	DCC67170	

Switch ON HCS of HPS9
 File: H_CRP_TCS_09H1.xls
 Author: E. Picallo



Step No.	Time	Activity/Remarks	TC/TLM	Display/ Branch
5		Verify HCS1 ON		Next Step: END
		Verify Telemetry Decon8_G9H1_s WM51G565	= ON	AND=WAHT2584
6		Switch ON HCS2		Next Step: 7
		Execute Telecommand SwOn_tank-Y_G9H2 TC Control Flags : GBM IL DSE --Y -- --- Subsch. ID : 10 Det. descr. : PCDU:TC(8,4,112,5) switch On Tank -Y Group 9 HCS 2	DCC68170	
7		Verify HCS2 ON		Next Step: END
		Verify Telemetry tank-Y_G9H2_s WM51H565	= ON	AND=WAHT2584
8		Switch ON HCS3		Next Step: 9
		Execute Telecommand SwOn_FCV_C4A_G9H3 TC Control Flags : GBM IL DSE --Y -- --- Subsch. ID : 10 Det. descr. : PCDU:TC(8,4,112,5) switch On FCV C4A Group 9 HCS 3	DCC69170	
9		Verify HCS3 ON		Next Step: END
		Verify Telemetry FcvC4A_G9H3_s WM51J565	= ON	AND=WAHT2584
10		Switch ON HCS4		Next Step: 11
		Execute Telecommand SwOn_FHLSU_G9H4 TC Control Flags : GBM IL DSE --Y -- --- Subsch. ID : 10 Det. descr. : PCDU:TC(8,4,112,5) switch On FHLSU Group 9 HCS 4	DCC70170	

Switch ON HCS of HPS9
 File: H_CRP_TCS_09H1.xls
 Author: E. Picallo



Step No.	Time	Activity/Remarks	TC/TLM	Display/ Branch
11		Verify HCS4 ON		Next Step: END
		Verify Telemetry FHL SU_G9H4_S WM51K565	= ON	AND=WAHT2584
12		Switch ON HCS5		Next Step: 13
		Execute Telecommand SwOn_STR1baffle_G9H5 TC Control Flags : GBM IL DSE --Y -- -- Subsch. ID : 10 Det. descr. : PCDU:TC(8,4,112,5) switch On STR1 baffle Group 9 HCS 5	DCC71170	
13		Verify HCS5 ON		Next Step: END
		Verify Telemetry STR1baffG9H5_S WM51L565	= ON	AND=WAHT2584
14		Switch ON HCS6		Next Step: 15
		Execute Telecommand SwOn_tank+Y_G9H6 TC Control Flags : GBM IL DSE --Y -- -- Subsch. ID : 10 Det. descr. : PCDU:TC(8,4,112,5) switch On Tank +Y Group 9 HCS 6	DCC72170	
15		Verify HCS6 ON		Next Step: END
		Verify Telemetry tank+Y_G9H6_S WM51M565	= ON	AND=WAHT2584
End of Procedure				