

Switch ON HCS of HPS8
 File: H_CRP_TCS_08H1.xls
 Author: E. Picallo



Procedure Summary

Objectives

This procedure describes the steps needed to switch ON a selected Heater Control Switch (HCS) of HPS8.

The location units of the HCSs belonging to HPS8 are the following:

- HCS1: FHHRV
- HCS2: FCV C3A
- HCS3: RCS piping
- HCS4: STR 2 baffle
- HCS5: RCS piping
- HCS6: FHLCU

Nominally the temperature control, and therefore the HCSs ON/OFF commanding, is managed by the CDMU ASW and it is driven through the Thermal Control Table (TCT).

Summary of Constraints

The selected HCS is switched ON through ASW TC(8,4,112,5); thus the status of the ASW function "PCDU Management" has to be "running".

Spacecraft Configuration

Start of Procedure

CDMU in default configuration;
 HPS8 ON;
 HCS OFF.

End of Procedure

CDMU in default configuration;
 HPS8 ON;
 HCS switched ON.

Reference File(s)

Input Command Sequences

Output Command Sequences

HRT08H1

Referenced Displays

ANDs GRDs SLDs
 WAHT2584

Configuration Control Information

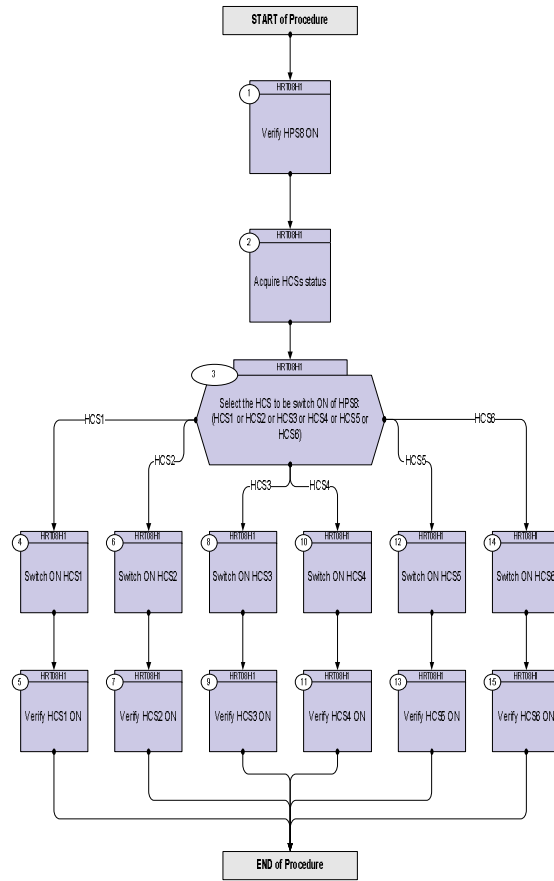
DATE	FOP ISSUE	VERSION	MODIFICATION DESCRIPTION	AUTHOR	SPR REF
16/02/09	2.1	1	Created	E. Picallo	

Status : Version 1 - Unchanged
 Last Checkin: 16/02/09

Switch ON HCS of HPS8
 File: H_CRP_TCS_08H1.xls
 Author: E. Picallo



Procedure Flowchart Overview



Switch ON HCS of HPS8
 File: H_CRP_TCS_08H1.xls
 Author: E. Picallo



Step No.	Time	Activity/Remarks	TC/TLM	Display/ Branch
Beginning of Procedure				
TC Seq. Name : HRT08H1 (Switch ON HCS HPS8)				
TimeTag Type: N				
Sub Schedule ID:				
□				
1		Verify HPS8 ON		Next Step: 2
		Verify Telemetry GRP8_HPS_STS WM52G565 = ON		AND=WAHT2584
2		Acquire HCSs status		Next Step: 3
		Verify Telemetry FHHRV_G8H1_S WM51A565		AND=WAHT2584
		Verify Telemetry FcvC3A_G8H2_S WM51B565		AND=WAHT2584
		Verify Telemetry RCSpipG8H3_S WM51C565		AND=WAHT2584
		Verify Telemetry STR2baffG8H4_S WM51D565		AND=WAHT2584
		Verify Telemetry RCSpipG8H5_S WM51E565		AND=WAHT2584
		Verify Telemetry FHLCU_G8H6_S WM51F565		AND=WAHT2584
3		Select the HCS to be switch ON of HPS8: (HCS1 or HCS2 or HCS3 or HCS4 or HCS5 or HCS6)		Next Step: HCS1 4 HCS2 6 HCS3 8 HCS4 10 HCS5 12 HCS6 14
4		Switch ON HCS1		Next Step: 5
		Execute Telecommand SwOn_FHHRV_G8H1 TC Control Flags : Subsch. ID : 10 Det. descr. : PCDU:TC(8,4,112,5) switch On FHHRV Group 8 HCS 1	DCC61170	

Switch ON HCS of HPS8
 File: H_CRP_TCS_08H1.xls
 Author: E. Picallo



Step No.	Time	Activity/Remarks	TC/TLM	Display/ Branch
5		Verify HCS1 ON		Next Step: END
		Verify Telemetry FHHRV_G8H1_S WM51A565	= ON	AND=WAHT2584
6		Switch ON HCS2		Next Step: 7
		Execute Telecommand SwOn_FCV_C3A_G8H2 TC Control Flags : Subsch. ID : 10 Det. descr. : PCDU:TC(8,4,112,5) switch On FCV C3A Group 8 HCS 2	DCC62170	
		GBM IL DSE --Y -- ---		
7		Verify HCS2 ON		Next Step: END
		Verify Telemetry FcvC3A_G8H2_S WM51B565	= ON	AND=WAHT2584
8		Switch ON HCS3		Next Step: 9
		Execute Telecommand SwOn_RCSpip_G8H3 TC Control Flags : Subsch. ID : 10 Det. descr. : PCDU:TC(8,4,112,5) switch On RCS piping Group 8 HCS 3	DCC63170	
		GBM IL DSE --Y -- ---		
9		Verify HCS3 ON		Next Step: END
		Verify Telemetry RCSpipG8H3_S WM51C565	= ON	AND=WAHT2584
10		Switch ON HCS4		Next Step: 11
		Execute Telecommand SwOn_STR2baffle_G8H4 TC Control Flags : Subsch. ID : 10 Det. descr. : PCDU:TC(8,4,112,5) switch On STR2 baffle Group 8 HCS 4	DCC64170	
		GBM IL DSE --Y -- ---		

Switch ON HCS of HPS8
 File: H_CRP_TCS_08H1.xls
 Author: E. Picallo




Step No.	Time	Activity/Remarks	TC/TLM	Display/ Branch
11		Verify HCS4 ON		Next Step: END
		Verify Telemetry STR2baffG8H4_S WM51D565	= ON	AND=WAHT2584
12		Switch ON HCS5		Next Step: 13
		Execute Telecommand SwOn_RCSpip_G8H5 TC Control Flags : GBM IL DSE --Y -- -- Subsch. ID : 10 Det. descr. : PCDU:TC(8,4,112,5) switch On RCS piping Group 8 HCS 5	DCC65170	
13		Verify HCS5 ON		Next Step: END
		Verify Telemetry RCSpipG8H5_S WM51E565	= ON	AND=WAHT2584
14		Switch ON HCS6		Next Step: 15
		Execute Telecommand SwOn_FHLCU_G8H6 TC Control Flags : GBM IL DSE --Y -- -- Subsch. ID : 10 Det. descr. : PCDU:TC(8,4,112,5) switch On FHLCU Group 8 HCS 6	DCC66170	
15		Verify HCS6 ON		Next Step: END
		Verify Telemetry FHLCU_G8H6_S WM51F565	= ON	AND=WAHT2584
End of Procedure				