

Switch ON HCS of HPS7
 File: H_CRP_TCS_07H1.xls
 Author: E. Picallo



Procedure Summary

Objectives

This procedure describes the steps needed to switch ON a selected Heater Control Switch (HCS) of HPS7.

The location units of the HCSs belonging to HPS7 are the following:

- HCS1: STR
- HCS2: Battery conn.
- HCS3: FHWOH
- HCS4: FHWEH
- HCS5: FCV C1A
- HCS6: FCV A2A

Nominally the temperature control, and therefore the HCSs ON/OFF commanding, is managed by the CDMU ASW and it is driven through the Thermal Control Table (TCT).

Summary of Constraints

The selected HCS is switched ON through ASW TC(8,4,112,5); thus the status of the ASW function "PCDU Management" has to be "running".

Spacecraft Configuration

Start of Procedure

CDMU in default configuration;
 HPS7 ON;
 HCS OFF.

End of Procedure

CDMU in default configuration;
 HPS7 ON;
 HCS switched ON.

Reference File(s)

Input Command Sequences

Output Command Sequences

HRT07H1

Referenced Displays

ANDs GRDs SLDs
 WAHT2584

Configuration Control Information

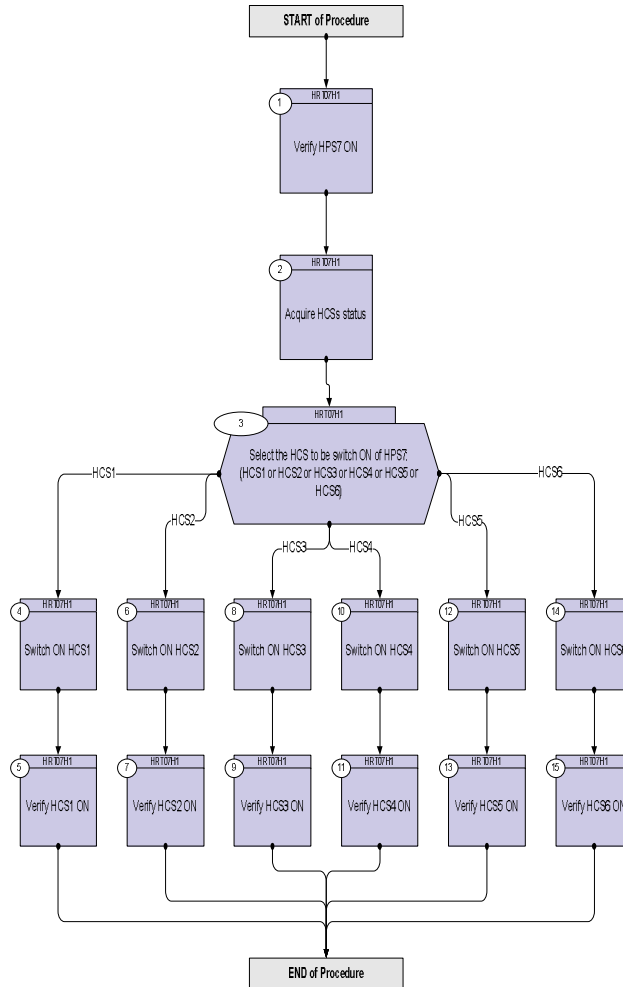
DATE	FOP ISSUE	VERSION	MODIFICATION DESCRIPTION	AUTHOR	SPR REF
16/02/09	2.1	1	Created	E. Picallo	

Status : Version 1 - Unchanged
 Last Checkin: 16/02/09

Switch ON HCS of HPS7
 File: H_CRP_TCS_07H1.xls
 Author: E. Picallo



Procedure Flowchart Overview



Switch ON HCS of HPS7
 File: H_CRP_TCS_07H1.xls
 Author: E. Picallo



Step No.	Time	Activity/Remarks	TC/TLM	Display/ Branch
Beginning of Procedure				
TC Seq. Name : HRT07H1 (Switch ON HCS HPS7)				
TimeTag Type: N Sub Schedule ID: □				
1		Verify HPS7 ON		Next Step: 2
		Verify Telemetry GRP7_HPS_STS WM42H565 = ON		AND=WAHT2584
2		Acquire HCSs status		Next Step: 3
		Verify Telemetry STR_G7H1_S WM41G565		AND=WAHT2584
		Verify Telemetry BATTconG7H2_S WM41H565		AND=WAHT2584
		Verify Telemetry FHWOH_G7H3_S WM41J565		AND=WAHT2584
		Verify Telemetry FHWEH_G7H4_S WM41K565		AND=WAHT2584
		Verify Telemetry FcvC1A_G7H5_S WM41L565		AND=WAHT2584
		Verify Telemetry FcvA2A_G7H6_S WM41M565		AND=WAHT2584
3		Select the HCS to be switch ON of HPS7: (HCS1 or HCS2 or HCS3 or HCS4 or HCS5 or HCS6)		Next Step: HCS1 4 HCS2 6 HCS3 8 HCS4 10 HCS5 12 HCS6 14
4		Switch ON HCS1		Next Step: 5
		Execute Telecommand SwOn_STR_G7H1 TC Control Flags : GBM IL DSE --Y -- -- Subsch. ID : 10 Det. descr. : PCDU:TC(8,4,112,5) switch On STR Group 7 HCS 1	DCC55170	

Switch ON HCS of HPS7
 File: H_CRP_TCS_07H1.xls
 Author: E. Picallo



Step No.	Time	Activity/Remarks	TC/TLM	Display/ Branch
5		Verify HCS1 ON		Next Step: END
		Verify Telemetry STR_G7H1_S WM41G565	= ON	AND=WAHT2584
6		Switch ON HCS2		Next Step: 7
		Execute Telecommand SwOn_BATTconn_G7H2 TC Control Flags : Subsch. ID : 10 Det. descr. : PCDU:TC(8,4,112,5) switch On BATTERY Connector Group 7 HCS 2	DCC56170 GBM IL DSE --Y -- ---	
7		Verify HCS2 ON		Next Step: END
		Verify Telemetry BATTconG7H2_S WM41H565	= ON	AND=WAHT2584
8		Switch ON HCS3		Next Step: 9
		Execute Telecommand SwOn_FHWOH_G7H3 TC Control Flags : Subsch. ID : 10 Det. descr. : PCDU:TC(8,4,112,5) switch On FHWOH Group 7 HCS 3	DCC57170 GBM IL DSE --Y -- ---	
9		Verify HCS3 ON		Next Step: END
		Verify Telemetry FHWOH_G7H3_S WM41J565	= ON	AND=WAHT2584
10		Switch ON HCS4		Next Step: 11
		Execute Telecommand SwOn_FHWEH_G7H4 TC Control Flags : Subsch. ID : 10 Det. descr. : PCDU:TC(8,4,112,5) switch On FHWEH Group 7 HCS 4	DCC58170 GBM IL DSE --Y -- ---	

