

Switch OFF HCS of HPS7
 File: H_CRP_TCS_07H0.xls
 Author: E. Picallo



Procedure Summary

Objectives

This procedure describes the steps needed to switch OFF a selected Heater Control Switch (HCS) of HPS7.

The location units of the HCSs belonging to HPS7 are the following:

- HCS1: STR
- HCS2: Battery conn.
- HCS3: FHWOH
- HCS4: FHWEH
- HCS5: FCV C1A
- HCS6: FCV A2A

Nominally the temperature control, and therefore the HCSs ON/OFF commanding, is managed by the CDMU ASW and it is driven through the Thermal Control Table (TCT).

Summary of Constraints

The selected HCS is switched OFF through ASW TC(8,4,112,3); thus the status of the ASW function "PCDU Management" has to be "running".

Spacecraft Configuration

Start of Procedure

CDMU in default configuration;
 HPS7 ON;
 HCS ON.

End of Procedure

CDMU in default configuration;
 HPS7 ON;
 HCS switched OFF.

Reference File(s)

Input Command Sequences

Output Command Sequences

HRT07H0

Referenced Displays

ANDs GRDs SLDs
 WAHT2584

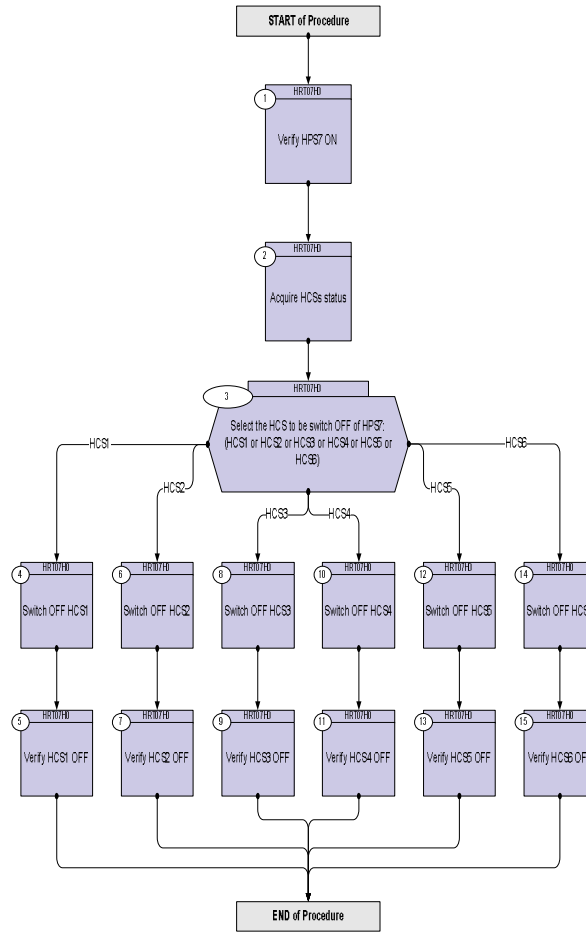
Configuration Control Information

DATE	FOP ISSUE	VERSION	MODIFICATION DESCRIPTION	AUTHOR	SPR REF
16/02/09	2.1	1	Created	E. Picallo	

Switch OFF HCS of HPS7
 File: H_CRP_TCS_07H0.xls
 Author: E. Picallo



Procedure Flowchart Overview



Switch OFF HCS of HPS7
 File: H_CRP_TCS_07H0.xls
 Author: E. Picallo



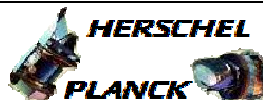
Step No.	Time	Activity/Remarks	TC/TLM	Display/ Branch
Beginning of Procedure				
TC Seq. Name :HRT07H0 (Switch OFF HCS HPS7)				
TimeTag Type: N Sub Schedule ID: □				
1		Verify HPS7 ON		Next Step: 2
		Verify Telemetry GRP7_HPS_STS WM42H565 = ON		AND=WAHT2584
2		Acquire HCSs status		Next Step: 3
		Verify Telemetry STR_G7H1_S WM41G565		AND=WAHT2584
		Verify Telemetry BATTconG7H2_S WM41H565		AND=WAHT2584
		Verify Telemetry FHWOH_G7H3_S WM41J565		AND=WAHT2584
		Verify Telemetry FHWEH_G7H4_S WM41K565		AND=WAHT2584
		Verify Telemetry FcvC1A_G7H5_S WM41L565		AND=WAHT2584
		Verify Telemetry FcvA2A_G7H6_S WM41M565		AND=WAHT2584
3		Select the HCS to be switch OFF of HPS7: (HCS1 or HCS2 or HCS3 or HCS4 or HCS5 or HCS6)		Next Step: HCS1 4 HCS2 6 HCS3 8 HCS4 10 HCS5 12 HCS6 14
4		Switch OFF HCS1		Next Step: 5
		Execute Telecommand SwOff_STR_G7H1 TC Control Flags : GBM IL DSE --Y -- -- Subsch. ID : 10 Det. descr. : PCDU:TC(8,4,112,3) switch Off STR Group 7 HCS 1	DCD81170	

Switch OFF HCS of HPS7
 File: H_CRP_TCS_07H0.xls
 Author: E. Picallo



Step No.	Time	Activity/Remarks	TC/TLM	Display/ Branch
5		Verify HCS1 OFF		Next Step: END
		Verify Telemetry STR_G7H1_S WM41G565	= OFF	AND=WAHT2584
6		Switch OFF HCS2		Next Step: 7
		Execute Telecommand SwOff_BATTconn_G7H2 TC Control Flags : GBM IL DSE --Y -- -- Subsch. ID : 10 Det. descr. : PCDU:TC(8,4,112,3) switch Off BATTERY Connector Group 7 HCS 2	DCD82170	
7		Verify HCS2 OFF		Next Step: END
		Verify Telemetry BATTconG7H2_S WM41H565	= OFF	AND=WAHT2584
8		Switch OFF HCS3		Next Step: 9
		Execute Telecommand SwOff_FHWOH_G7H3 TC Control Flags : GBM IL DSE --Y -- -- Subsch. ID : 10 Det. descr. : PCDU:TC(8,4,112,3) switch Off FHWOH Group 7 HCS 3	DCD83170	
9		Verify HCS3 OFF		Next Step: END
		Verify Telemetry FHWOH_G7H3_S WM41J565	= OFF	AND=WAHT2584
10		Switch OFF HCS4		Next Step: 11
		Execute Telecommand SwOff_FHWEH_G7H4 TC Control Flags : GBM IL DSE --Y -- -- Subsch. ID : 10 Det. descr. : PCDU:TC(8,4,112,3) switch Off FHWEH Group 7 HCS 4	DCD84170	

Switch OFF HCS of HPS7
 File: H_CRP_TCS_07H0.xls
 Author: E. Picallo



Step No.	Time	Activity/Remarks	TC/TLM	Display/ Branch
11		Verify HCS4 OFF		Next Step: END
		Verify Telemetry FHWEH_G7H4_S WM41K565 = OFF		AND=WAHT2584
12		Switch OFF HCS5		Next Step: 13
		Execute Telecommand SwOff_FCV_C1A_G7H5 DCD85170 TC Control Flags : GBM IL DSE --Y -- -- Subsch. ID : 10 Det. descr. : PCDU:TC(8,4,112,3) switch Off FCV C1A Group 7 HCS 5		
13		Verify HCS5 OFF		Next Step: END
		Verify Telemetry FcvC1A_G7H5_S WM41L565 = OFF		AND=WAHT2584
14		Switch OFF HCS6		Next Step: 15
		Execute Telecommand SwOff_FCV_A2A_G7H6 DCD86170 TC Control Flags : GBM IL DSE --Y -- -- Subsch. ID : 10 Det. descr. : PCDU:TC(8,4,112,3) switch Off FCV A2A Group 7 HCS 6		
15		Verify HCS6 OFF		Next Step: END
		Verify Telemetry FcvA2A_G7H6_S WM41M565 = OFF		AND=WAHT2584
End of Procedure				