

Switch OFF HCS of HPS6
 File: H_CRP_TCS_06H0.xls
 Author: E. Picallo



Procedure Summary

Objectives

This procedure describes the steps needed to switch OFF a selected Heater Control Switch (HCS) of HPS6.

The location units of the HCSs belonging to HPS6 are the following:

- HCS1: Decontamination 7
- HCS2: RWA 4
- HCS3: RWA 1
- HCS4: RWA 3
- HCS5: FHWEV
- HCS6: RWA 2

Nominally the temperature control, and therefore the HCSs ON/OFF commanding, is managed by the CDMU ASW and it is driven through the Thermal Control Table (TCT).

Summary of Constraints

The selected HCS is switched OFF through ASW TC(8,4,112,3); thus the status of the ASW function "PCDU Management" has to be "running".

Spacecraft Configuration

Start of Procedure

CDMU in default configuration;
 HPS6 ON;
 HCS ON.

End of Procedure

CDMU in default configuration;
 HPS6 ON;
 HCS switched OFF.

Reference File(s)

Input Command Sequences

Output Command Sequences

HRT06H0

Referenced Displays

ANDs GRDs SLDs
 WAHT1584

Configuration Control Information

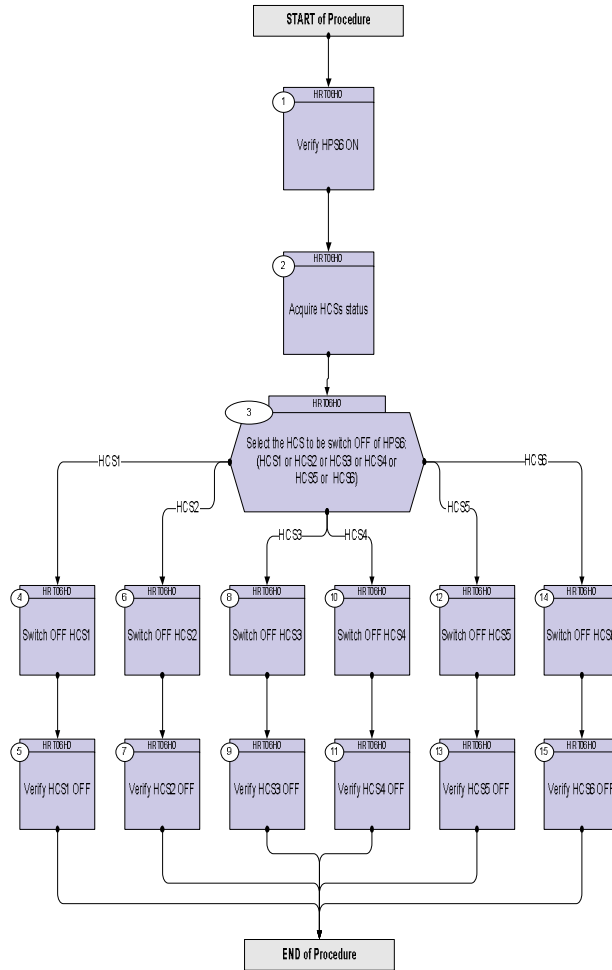
DATE	FOP ISSUE	VERSION	MODIFICATION DESCRIPTION	AUTHOR	SPR REF
16/02/09	2.1	1	Created	E. Picallo	

Status : Version 1 - Unchanged
 Last Checkin: 16/02/09

Switch OFF HCS of HPS6
File: H_CRP_TCS_06H0.xls
Author: E. Picallo



Procedure Flowchart Overview



Switch OFF HCS of HPS6
 File: H_CRP_TCS_06H0.xls
 Author: E. Picallo



Step No.	Time	Activity/Remarks	TC/TLM	Display/ Branch
Beginning of Procedure				
TC Seq. Name : HRT06H0 (Switch OFF HCS HPS6)				
TimeTag Type: N Sub Schedule ID: □				
1		Verify HPS6 ON		Next Step: 2
		Verify Telemetry GRP6_HPS_STS WM42G565 = ON		AND=WAHT1584
2		Acquire HCSs status		Next Step: 3
		Verify Telemetry Decon7_G6H1_S WM41A565		AND=WAHT1584
		Verify Telemetry RWA4_G6H2_S WM41B565		AND=WAHT1584
		Verify Telemetry RWA1_G6H3_S WM41C565		AND=WAHT1584
		Verify Telemetry RWA3_G6H4_S WM41D565		AND=WAHT1584
		Verify Telemetry FHWIV_G6H5_S WM41E565		AND=WAHT1584
		Verify Telemetry RWA2_G6H6_S WM41F565		AND=WAHT1584
3		Select the HCS to be switch OFF of HPS6: (HCS1 or HCS2 or HCS3 or HCS4 or HCS5 or HCS6)		Next Step: HCS1 4 HCS2 6 HCS3 8 HCS4 10 HCS5 12 HCS6 14
4		Switch OFF HCS1		Next Step: 5
		Execute Telecommand SwOff_Decont_7_G6H1 TC Control Flags : GBM IL DSE --Y -- -- Subsch. ID : 10 Det. descr. : PCDU:TC(8,4,112,3) switch Off Decontamination 7 Group 6 HCS 1	DCD75170	

Switch OFF HCS of HPS6
 File: H_CRP_TCS_06H0.xls
 Author: E. Picallo



Step No.	Time	Activity/Remarks	TC/TLM	Display/ Branch
11		Verify HCS4 OFF		Next Step: END
		Verify Telemetry RWA3_G6H4_S WM41D565	= OFF	AND=WAHT1584
12		Switch OFF HCS5		Next Step: 13
		Execute Telecommand SwOff_FHWEV_G6H5 TC Control Flags : GBM IL DSE --Y -- -- Subsch. ID : 10 Det. descr. : PCDU:TC(8,4,112,3) switch Off FHWEV Group 6 HCS 5	DCD79170	
13		Verify HCS5 OFF		Next Step: END
		Verify Telemetry FHWIV_G6H5_S WM41E565	= OFF	AND=WAHT1584
14		Switch OFF HCS6		Next Step: 15
		Execute Telecommand SwOff_RWA2 G6H6 TC Control Flags : GBM IL DSE --Y -- -- Subsch. ID : 10 Det. descr. : PCDU:TC(8,4,112,3) switch Off RWA 2 Group 6 HCS 6	DCD80170	
15		Verify HCS6 OFF		Next Step: END
		Verify Telemetry RWA2_G6H6_S WM41F565	= OFF	AND=WAHT1584
End of Procedure				