

Switch OFF HCS of HPS5  
 File: H\_CRP\_TCS\_05H0.xls  
 Author: E. Picallo



## Procedure Summary

### Objectives

This procedure describes the steps needed to switch OFF a selected Heater Control Switch (HCS) of HPS5. The location units of the HCSs belonging to HPS5 are the following:

- HCS1: CRS 2
- HCS2: FHHRH
- HCS3: PHWEV/PHICU
- HCS4: FCV C3B
- HCS5: RCS piping
- HCS6: PT/LF/LV1/LV2

Nominally the temperature control, and therefore the HCSs ON/OFF commanding, is managed by the CDMU ASW and it is driven through the Thermal Control Table (TCT).

### Summary of Constraints

The selected HCS is switched OFF through ASW TC(8,4,112,3); thus the status of the ASW function "PCDU Management" has to be "running".

### Spacecraft Configuration

#### Start of Procedure

CDMU in default configuration;  
 HPS5 ON;  
 HCS ON.

#### End of Procedure

CDMU in default configuration;  
 HPS5 ON;  
 HCS switched OFF.

### Reference File(s)

#### Input Command Sequences

#### Output Command Sequences

HRT05H0

### Referenced Displays

ANDs      GRDs      SLDs  
 WAHT1584

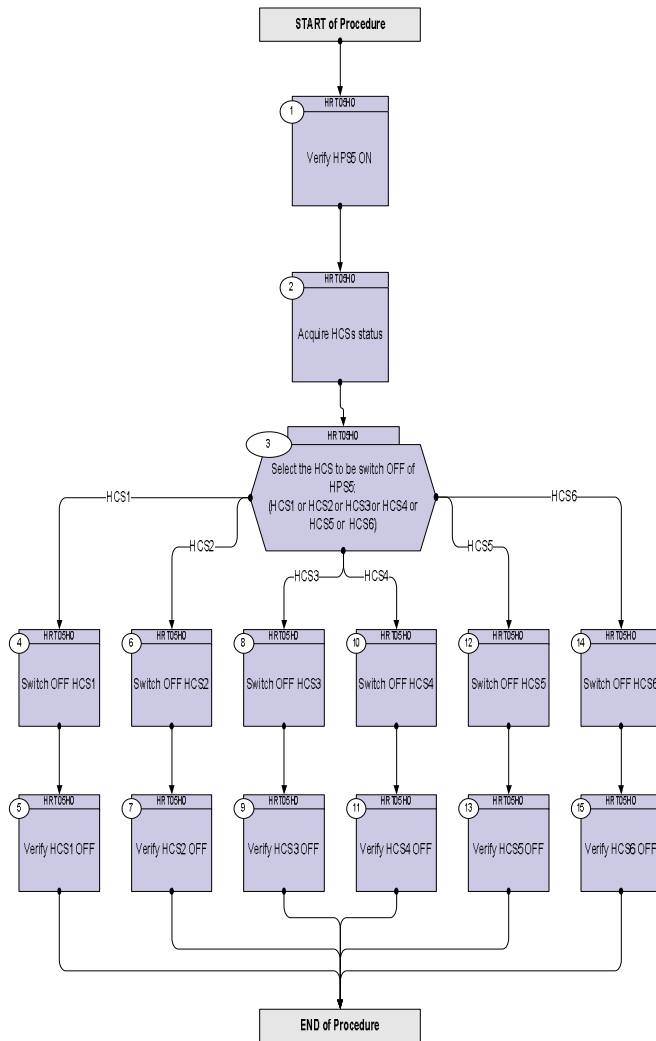
### Configuration Control Information

DATE	FOP ISSUE	VERSION	MODIFICATION DESCRIPTION	AUTHOR	SPR REF
16/02/09		1	Created	E. Picallo	
26/02/09	2.1	2	Template updated	E. Picallo	

Switch OFF HCS of HPS5  
File: H\_CRP\_TCS\_05H0.xls  
Author: E. Picallo



### Procedure Flowchart Overview



Switch OFF HCS of HPS5  
 File: H\_CRP\_TCS\_05H0.xls  
 Author: E. Picallo



Step No.	Time	Activity/Remarks	TC/TLM	Display/ Branch
<b>Beginning of Procedure</b>				
TC Seq. Name :HRT05H0 (Switch OFF HCS HPS5)				
TimeTag Type: N Sub Schedule ID:  □				
1		Verify HPS5 ON		Next Step: 2
		Verify Telemetry GRP5_HPS_STS WM32H565 = ON		AND=WAHT1584
2		Acquire HCSs status		Next Step: 3
		Verify Telemetry CRS2_G5H1_S WM31G565		AND=WAHT1584
		Verify Telemetry FHHRH_G5H2_S WM31H565		AND=WAHT1584
		Verify Telemetry FhWevIcuG5H3_S WM31J565		AND=WAHT1584
		Verify Telemetry FcvC3B_G5H4_S WM31K565		AND=WAHT1584
		Verify Telemetry RCSpipG5H5_S WM31L565		AND=WAHT1584
		Verify Telemetry PtLflv12_G5H6_S WM31M565		AND=WAHT1584
3		Select the HCS to be switch OFF of HPS5: (HCS1 or HCS2 or HCS3 or HCS4 or HCS5 or HCS6)		Next Step: HCS1 4 HCS2 6 HCS3 8 HCS4 10 HCS5 12 HCS6 14
4		Switch OFF HCS1		Next Step: 5
		Execute Telecommand SwOff_CRS2_G5H1  TC Control Flags : GBM IL DSE --Y -- --  Subsch. ID : 10 Det. descr. : PCDU:TC(8,4,112,3) switch Off CRS2 Group 5 HCS 1	DCD69170	

Switch OFF HCS of HPS5  
 File: H\_CRP\_TCS\_05H0.xls  
 Author: E. Picallo



Step No.	Time	Activity/Remarks	TC/TLM	Display/ Branch
5		Verify HCS1 OFF		Next Step: END
		Verify Telemetry CRS2_G5H1_S WM31G565	= OFF	AND=WAHT1584
6		Switch OFF HCS2		Next Step: 7
		Execute Telecommand SwOff_FHHRH_G5H2 TC Control Flags : Subsch. ID : 10 Det. descr. : PCDU:TC(8,4,112,3) switch Off FHHRH Group 5 HCS 2	DCD70170 GBM IL DSE --Y -- ---	
7		Verify HCS2 OFF		Next Step: END
		Verify Telemetry FHHRH_G5H2_S WM31H565	= OFF	AND=WAHT1584
8		Switch OFF HCS3		Next Step: 9
		Execute Telecommand SwOff_FHWEV FHICU_G5H3 TC Control Flags : Subsch. ID : 10 Det. descr. : PCDU:TC(8,4,112,3) switch Off FHWEV/FHICU Group 5 HCS 3	DCD71170 GBM IL DSE --Y -- ---	
9		Verify HCS3 OFF		Next Step: END
		Verify Telemetry FhWevIcuG5H3_S WM31J565	= OFF	AND=WAHT1584
10		Switch OFF HCS4		Next Step: 11
		Execute Telecommand SwOff_FCV_C3B_G5H4 TC Control Flags : Subsch. ID : 10 Det. descr. : PCDU:TC(8,4,112,3) switch Off FCV C3B Group 5 HCS 4	DCD72170 GBM IL DSE --Y -- ---	

