

Switch ON HCS of HPS4  
 File: H\_CRP\_TCS\_04H1.xls  
 Author: E. Picallo



## Procedure Summary

### Objectives

This procedure describes the steps needed to switch ON a selected Heater Control Switch (HCS) of HPS4.

The location units of the HCSs belonging to HPS4 are the following:

- HCS1: Decontamination 5
- HCS2: PHWOV
- HCS3: RCS piping
- HCS4: FCV A1A
- HCS5: FCV C2A
- HCS6: RCS piping

Nominally the temperature control, and therefore the HCSs ON/OFF commanding, is managed by the CDMU ASW and it is driven through the Thermal Control Table (TCT).

### Summary of Constraints

The selected HCS is switched ON through ASW TC(8,4,112,5); thus the status of the ASW function "PCDU Management" has to be "running".

### Spacecraft Configuration

#### Start of Procedure

CDMU in default configuration;  
 HPS4 ON;  
 HCS OFF.

#### End of Procedure

CDMU in default configuration;  
 HPS4 ON;  
 HCS switched ON.

### Reference File(s)

#### Input Command Sequences

#### Output Command Sequences

HRT04H1

### Referenced Displays

ANDs      GRDs      SLDs  
 WAHT1584

### Configuration Control Information

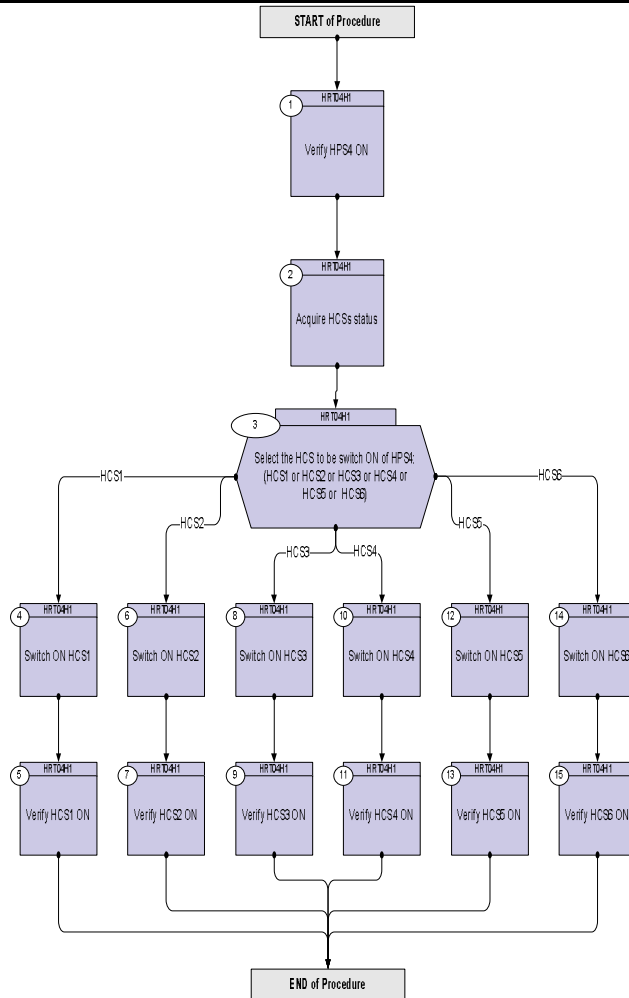
DATE	FOP ISSUE	VERSION	MODIFICATION DESCRIPTION	AUTHOR	SPR REF
16/02/09	2.1	1	Created	E. Picallo	

Status : Version 1 - Unchanged  
 Last Checkin: 16/02/09

Switch ON HCS of HPS4  
 File: H\_CRP\_TCS\_04H1.xls  
 Author: E. Picallo



## Procedure Flowchart Overview



Switch ON HCS of HPS4  
 File: H\_CRP\_TCS\_04H1.xls  
 Author: E. Picallo



Step No.	Time	Activity/Remarks	TC/TLM	Display/ Branch
<b>Beginning of Procedure</b>				
TC Seq. Name : HRT04H1 (Switch ON HCS HPS4)				
TimeTag Type: N				
Sub Schedule ID:				
□				
1		Verify HPS4 ON		Next Step: 2
		Verify Telemetry GRP4_HPS_STS WM32G565		AND=WAHT1584
2		Acquire HCSs status		Next Step: 3
		Verify Telemetry Decon5_G4H1_S WM31A565		AND=WAHT1584
		Verify Telemetry FHWOV_G4H2_S WM31B565		AND=WAHT1584
		Verify Telemetry RCSpip_G4H3_S WM31C565		AND=WAHT1584
		Verify Telemetry FcvA1A_G4H4_S WM31D565		AND=WAHT1584
		Verify Telemetry FcvC2A_G4H5_S WM31E565		AND=WAHT1584
		Verify Telemetry RCSpipG4H6_S WM31F565		AND=WAHT1584
3		Select the HCS to be switch ON of HPS4: (HCS1 or HCS2 or HCS3 or HCS4 or HCS5 or HCS6)		Next Step: HCS1 4 HCS2 6 HCS3 8 HCS4 10 HCS5 12 HCS6 14
4		Switch ON HCS1		Next Step: 5
		Execute Telecommand SwOn_Decont_5_G4H1	DCC37170	
		TC Control Flags : GBM IL DSE --Y -- ---		
		Subsch. ID : 0 Det. descr. : PCDU:TC(8,4,112,5) switch On Decontamination 5 Group 4 HCS 1		

Switch ON HCS of HPS4  
 File: H\_CRP\_TCS\_04H1.xls  
 Author: E. Picallo



Step No.	Time	Activity/Remarks	TC/TLM	Display/ Branch
5		Verify HCS1 ON		Next Step: END
		Verify Telemetry Decon5_G4H1_S WM31A565	= ON	AND=WAHT1584
6		Switch ON HCS2		Next Step: 7
		Execute Telecommand SwOn_FHWOV_G4H2 TC Control Flags : Subsch. ID : 0 Det. descr. : PCDU:TC(8,4,112,5) switch On FHWOV Group 4 HCS 2	DCC38170	
7		Verify HCS2 ON		Next Step: END
		Verify Telemetry FHWOV_G4H2_S WM31B565	= ON	AND=WAHT1584
8		Switch ON HCS3		Next Step: 9
		Execute Telecommand SwOn_RCSpip_G4H3 TC Control Flags : Subsch. ID : 0 Det. descr. : PCDU:TC(8,4,112,5) switch On RCS piping Group 4 HCS 3	DCC39170	
9		Verify HCS3 ON		Next Step: END
		Verify Telemetry RCSpip_G4H3_S WM31C565	= ON	AND=WAHT1584
10		Switch ON HCS4		Next Step: 11
		Execute Telecommand SwOn_FCV_A1A_G4H4 TC Control Flags : Subsch. ID : 0 Det. descr. : PCDU:TC(8,4,112,5) switch On FCV A1A Group 4 HCS 4	DCC40170	

