

Switch OFF HCS of HPS4
 File: H_CRP_TCS_04H0.xls
 Author: E. Picallo



Procedure Summary

Objectives

This procedure describes the steps needed to switch OFF a selected Heater Control Switch (HCS) of HPS4.

The location units of the HCSs belonging to HPS4 are the following:

- HCS1: Decontamination 5
- HCS2: PHWOV
- HCS3: RCS piping
- HCS4: FCV A1A
- HCS5: FCV C2A
- HCS6: RCS piping

Nominally the temperature control, and therefore the HCSs ON/OFF commanding, is managed by the CDMU ASW and it is driven through the Thermal Control Table (TCT).

Summary of Constraints

The selected HCS is switched OFF through ASW TC(8,4,112,3); thus the status of the ASW function "PCDU Management" has to be "running".

Spacecraft Configuration

Start of Procedure

CDMU in default configuration;
 HPS4 ON;
 HCS ON.

End of Procedure

CDMU in default configuration;
 HPS4 ON;
 HCS switched OFF.

Reference File(s)

Input Command Sequences

Output Command Sequences

HRT04H0

Referenced Displays

ANDs GRDs SLDs
 WAHT1584

Configuration Control Information

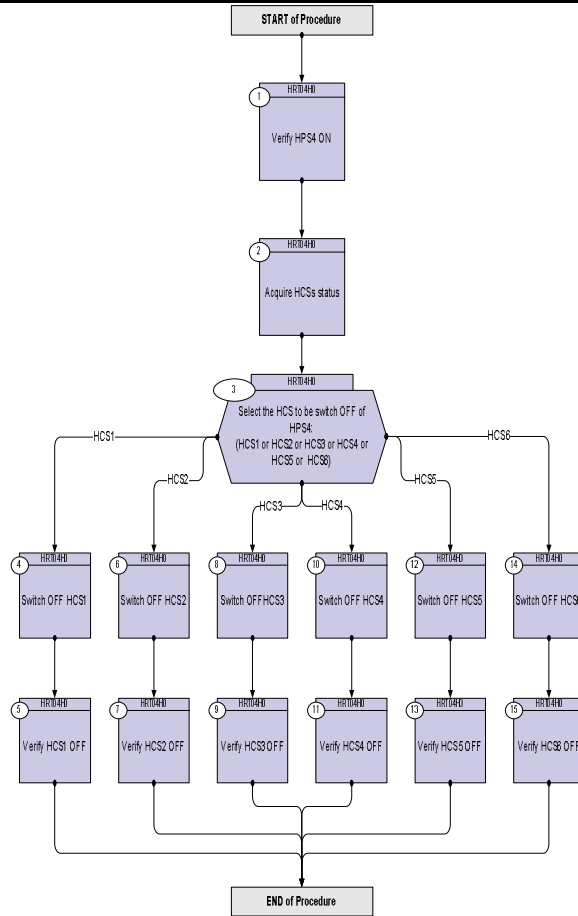
DATE	FOP ISSUE	VERSION	MODIFICATION DESCRIPTION	AUTHOR	SPR REF
16/02/09	2.1	1	Created	E. Picallo	

Status : Version 1 - Unchanged
 Last Checkin: 16/02/09

Switch OFF HCS of HPS4
 File: H_CRP_TCS_04H0.xls
 Author: E. Picallo



Procedure Flowchart Overview



Switch OFF HCS of HPS4
 File: H_CRP_TCS_04H0.xls
 Author: E. Picallo



Step No.	Time	Activity/Remarks	TC/TLM	Display/ Branch
Beginning of Procedure				
TC Seq. Name :HRT04H0 (Switch OFF HCS HPS4)				
TimeTag Type: N Sub Schedule ID: □				
1		Verify HPS4 ON		Next Step: 2
		Verify Telemetry GRP4_HPS_STS WM32G565		AND=WAHT1584
2		Acquire HCSs status		Next Step: 3
		Verify Telemetry Decon5_G4H1_S WM31A565		AND=WAHT1584
		Verify Telemetry FHWOV_G4H2_S WM31B565		AND=WAHT1584
		Verify Telemetry RCSpip_G4H3_S WM31C565		AND=WAHT1584
		Verify Telemetry FcvA1A_G4H4_S WM31D565		AND=WAHT1584
		Verify Telemetry FcvC2A_G4H5_S WM31E565		AND=WAHT1584
		Verify Telemetry RCSpipG4H6_S WM31F565		AND=WAHT1584
3		Select the HCS to be switch OFF of HPS4: (HCS1 or HCS2 or HCS3 or HCS4 or HCS5 or HCS6)		Next Step: HCS1 4 HCS2 6 HCS3 8 HCS4 10 HCS5 12 HCS6 14
4		Switch OFF HCS1		Next Step: 5
		Execute Telecommand SwOff_Decont_5_G4H1 TC Control Flags : GBM IL DSE --Y -- --- Subsch. ID : 0 Det. descr. : PCDU:TC(8,4,112,3) switch Off Decontamination 5 Group 4 HCS 1	DCD63170	

Switch OFF HCS of HPS4
 File: H_CRP_TCS_04H0.xls
 Author: E. Picallo



Step No.	Time	Activity/Remarks	TC/TLM	Display/ Branch
5		Verify HCS1 OFF		Next Step: END
		Verify Telemetry Decon5_G4H1_S WM31A565	= OFF	AND=WAHT1584
6		Switch OFF HCS2		Next Step: 7
		Execute Telecommand SwOff_FHWOV_G4H2 TC Control Flags : Subsch. ID : 0 Det. descr. : PCDU:TC(8,4,112,3) switch Off FHWOV Group 4 HCS 2	DCD64170	
		GBM IL DSE --Y -- ---		
7		Verify HCS2 OFF		Next Step: END
		Verify Telemetry FHWOV_G4H2_S WM31B565	= OFF	AND=WAHT1584
8		Switch OFFHCS3		Next Step: 9
		Execute Telecommand SwOff_RCSpip_G4H3 TC Control Flags : Subsch. ID : 0 Det. descr. : PCDU:TC(8,4,112,3) switch Off RCS piping Group 4 HCS 3	DCD65170	
		GBM IL DSE --Y -- ---		
9		Verify HCS3 OFF		Next Step: END
		Verify Telemetry RCSpip_G4H3_S WM31C565	= OFF	AND=WAHT1584
10		Switch OFF HCS4		Next Step: 11
		Execute Telecommand SwOff_FCV_A1A_G4H4 TC Control Flags : Subsch. ID : 0 Det. descr. : PCDU:TC(8,4,112,3) switch Off FCV A1A Group 4 HCS 4	DCD66170	
		GBM IL DSE --Y -- ---		

Switch OFF HCS of HPS4
 File: H_CRP_TCS_04H0.xls
 Author: E. Picallo



Step No.	Time	Activity/Remarks	TC/TLM	Display/ Branch
11		Verify HCS4 OFF		Next Step: END
		Verify Telemetry FcvA1A_G4H4_S WM31D565 = OFF		AND=WAHT1584
12		Switch OFF HCS5		Next Step: 13
		Execute Telecommand SwOff_FCV_C2A_G4H5 TC Control Flags : Subsch. ID : 0 Det. descr. : PCDU:TC(8,4,112,3) switch Off FCV C2A Group 4 HCS 5	DCD67170	
13		Verify HCS5 OFF		Next Step: END
		Verify Telemetry FcvC2A_G4H5_S WM31E565 = OFF		AND=WAHT1584
14		Switch OFF HCS6		Next Step: 15
		Execute Telecommand SwOff_RCSpip_G4H6 TC Control Flags : Subsch. ID : 0 Det. descr. : PCDU:TC(8,4,112,3) switch Off RCS piping Group 4 HCS 6	DCD68170	
15		Verify HCS6 OFF		Next Step: END
		Verify Telemetry RCSpipG4H6_S WM31F565 = OFF		AND=WAHT1584
End of Procedure				