

Switch ON HCS of HPS3
 File: H_CRP_TCS_03H1.xls
 Author: E. Picallo



Procedure Summary

Objectives

This procedure describes the steps needed to switch ON a selected Heater Control Switch (HCS) of HPS3.

The location units of the HCSs belonging to HPS3 are the following:

- HCS1: FPBOLC
- HCS2: CRS 1
- HCS3: FPMECDEC
- HCS4: RCS piping
- HCS5: CCU/HSDCU/HSFCU
- HCS6: Gyro

Nominally the temperature control, and therefore the HCSs ON/OFF commanding, is managed by the CDMU ASW and it is driven through the Thermal Control Table (TCT).

Summary of Constraints

The selected HCS is switched ON through ASW TC(8,4,112,5); thus the status of the ASW function "PCDU Management" has to be "running".

Spacecraft Configuration

Start of Procedure

CDMU in default configuration;
 HPS3 ON;
 HCS OFF.

End of Procedure

CDMU in default configuration;
 HPS3 ON;
 HCS switched ON.

Reference File(s)

Input Command Sequences

Output Command Sequences

HRT03H1

Referenced Displays

ANDs GRDs SLDs
 WAHT1584

Configuration Control Information

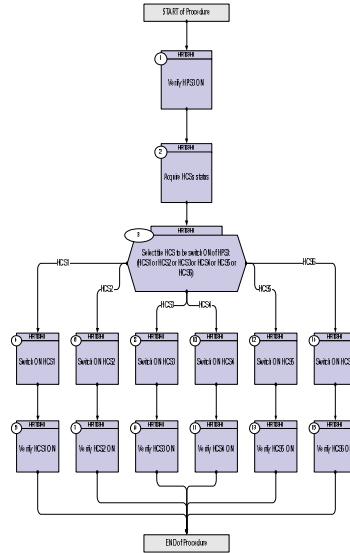
DATE	FOP ISSUE	VERSION	MODIFICATION DESCRIPTION	AUTHOR	SPR REF
16/02/09		1	Created	E. Picallo	
26/02/09	2.1	2	Template updated	E. Picallo	

Status : Version 2 - Unchanged
 Last Checkin: 26/02/09

Switch ON HCS of HPS3
 File: H_CRP_TCS_03H1.xls
 Author: E. Picallo



Procedure Flowchart Overview



Switch ON HCS of HPS3
 File: H_CRP_TCS_03H1.xls
 Author: E. Picallo



Step No.	Time	Activity/Remarks	TC/TLM	Display/ Branch
Beginning of Procedure				
TC Seq. Name : HRT03H1 (Switch ON HCS HPS3)				
TimeTag Type: N				
Sub Schedule ID:				
□				
1		Verify HPS3 ON		Next Step: 2
		Verify Telemetry GRP3_HPS_STS WM22H565 = ON		AND=WAHT1584
2		Acquire HCSs status		Next Step: 3
		Verify Telemetry FPBOLC_G3H1_S WM21G565		AND=WAHT1584
		Verify Telemetry CRS1_G3H2_S WM21H565		AND=WAHT1584
		Verify Telemetry FPMECDEC_G3H3_S WM21J565		AND=WAHT1584
		Verify Telemetry RCSpipG3H4_S WM21K565		AND=WAHT1584
		Verify Telemetry CcuHsdHsfG3H5_S WM21L565		AND=WAHT1584
		Verify Telemetry GYRO_G3H6_S WM21M565		AND=WAHT1584
3		Select the HCS to be switch ON of HPS3: (HCS1 or HCS2 or HCS3 or HCS4 or HCS5 or HCS6)		Next Step: HCS1 4 HCS2 6 HCS3 8 HCS4 10 HCS5 12 HCS6 14
4		Switch ON HCS1		Next Step: 5
		Execute Telecommand SwOn_FPBOLC_G3H1 TC Control Flags : Subsch. ID : 10 Det. descr. : PCDU:TC(8,4,112,5) switch On FPBOLC Group 3 HCS 1	DCC31170	

Switch ON HCS of HPS3
 File: H_CRP_TCS_03H1.xls
 Author: E. Picallo



Step No.	Time	Activity/Remarks	TC/TLM	Display/ Branch
5		Verify HCS1 ON		Next Step: END
		Verify Telemetry FPBOLC_G3H1_S WM21G565	= ON	AND=WAHT1584
6		Switch ON HCS2		Next Step: 7
		Execute Telecommand SwOn_CRS1_G3H2 TC Control Flags : GBM IL DSE --Y -- -- Subsch. ID : 10 Det. descr. : PCDU:TC(8,4,112,5) switch On CRS1 Group 3 HCS 2	DCC32170	
7		Verify HCS2 ON		Next Step: END
		Verify Telemetry CRS1_G3H2_S WM21H565	= ON	AND=WAHT1584
8		Switch ON HCS3		Next Step: 9
		Execute Telecommand SwOn_FPMECDEC_G3H3 TC Control Flags : GBM IL DSE --Y -- -- Subsch. ID : 10 Det. descr. : PCDU:TC(8,4,112,5) switch On FPMECDEC Group 3 HCS 3	DCC33170	
9		Verify HCS3 ON		Next Step: END
		Verify Telemetry FPMECDEC_G3H3_S WM21J565	= ON	AND=WAHT1584
10		Switch ON HCS4		Next Step: 11
		Execute Telecommand SwOn_RCSpip_G3H4 TC Control Flags : GBM IL DSE --Y -- -- Subsch. ID : 10 Det. descr. : PCDU:TC(8,4,112,5) switch On RCS piping Group 3 HCS 4	DCC34170	

Switch ON HCS of HPS3
 File: H_CRP_TCS_03H1.xls
 Author: E. Picallo



Step No.	Time	Activity/Remarks	TC/TLM	Display/ Branch
11		Verify HCS4 ON		Next Step: END
		Verify Telemetry RCSpipG3H4_S WM21K565	= ON	AND=WAHT1584
12		Switch ON HCS5		Next Step: 13
		Execute Telecommand SwOn_CCUHSDHSF_G3H5 TC Control Flags : GBM IL DSE --Y -- -- Subsch. ID : 10 Det. descr. : PCDU:TC(8,4,112,5) switch On CCU/HSDCU/HSFCU Group 3 HCS 5	DCC35170	
13		Verify HCS5 ON		Next Step: END
		Verify Telemetry CcuHsdHsfG3H5_S WM21L565	= ON	AND=WAHT1584
14		Switch ON HCS6		Next Step: 15
		Execute Telecommand SwOn_GYRO_G3H6 TC Control Flags : GBM IL DSE --Y -- -- Subsch. ID : 10 Det. descr. : PCDU:TC(8,4,112,5) switch On GYRO Group 3 HCS 6	DCC36170	
15		Verify HCS6 ON		Next Step: END
		Verify Telemetry GYRO_G3H6_S WM21M565	= ON	AND=WAHT1584
End of Procedure				