

Switch OFF HCS of HPS3
 File: H_CRP_TCS_03H0.xls
 Author: E. Picallo



Procedure Summary

Objectives

This procedure describes the steps needed to switch OFF a selected Heater Control Switch (HCS) of HPS3.

The location units of the HCSs belonging to HPS3 are the following:

- HCS1: FPBOLC
- HCS2: CRS 1
- HCS3: FPMECDEC
- HCS4: RCS piping
- HCS5: CCU/HSDCU/HSFCU
- HCS6: Gyro

Nominally the temperature control, and therefore the HCSs ON/OFF commanding, is managed by the CDMU ASW and it is driven through the Thermal Control Table (TCT).

Summary of Constraints

The selected HCS is switched OFF through ASW TC(8,4,112,3); thus the status of the ASW function "PCDU Management" has to be "running".

Spacecraft Configuration

Start of Procedure

CDMU in default configuration;
 HPS3 ON;
 HCS ON.

End of Procedure

CDMU in default configuration;
 HPS3 ON;
 HCS switched OFF.

Reference File(s)

Input Command Sequences

Output Command Sequences

HRT03H0

Referenced Displays

ANDs	GRDs	SLDs
WAHT1584		
ZAD32999		

Configuration Control Information

DATE	FOP ISSUE	VERSION	MODIFICATION DESCRIPTION	AUTHOR	SPR REF
------	-----------	---------	--------------------------	--------	---------

Status : Version 1 - Unchanged
 Last Checkin: 16/02/09

Switch OFF HCS of HPS3
File: H_CRP_TCS_03H0.xls
Author: E. Picallo



16/02/09

2.1

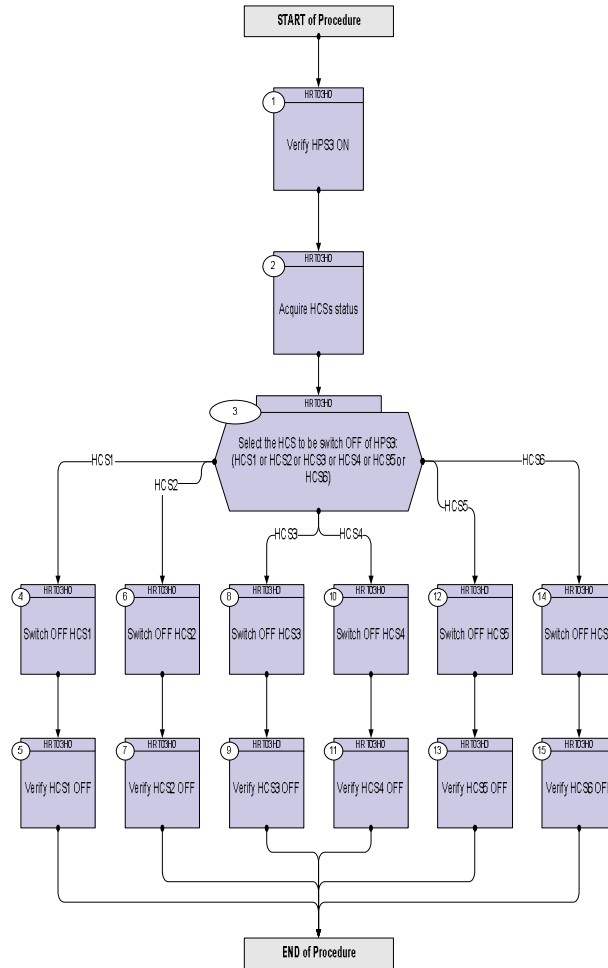
1 Created

E. Picallo

Switch OFF HCS of HPS3
 File: H_CRP_TCS_03H0.xls
 Author: E. Picallo



Procedure Flowchart Overview



Switch OFF HCS of HPS3
 File: H_CRP_TCS_03H0.xls
 Author: E. Picallo



Step No.	Time	Activity/Remarks	TC/TLM	Display/ Branch
Beginning of Procedure				
TC Seq. Name : HRT03H0 (Switch OFF HCS HPS3)				
TimeTag Type: N				
Sub Schedule ID:				
□				
1		Verify HPS3 ON		Next Step: 2
		Verify Telemetry GRP3_HPS_STS WM22H565 = ON		AND=WAHT1584
2		Acquire HCSs status		Next Step: 3
		Verify Telemetry FPBOLC_G3H1_S WM21G565		AND=WAHT1584
		Verify Telemetry CRS1_G3H2_S WM21H565		AND=WAHT1584
		Verify Telemetry FPMECDEC_G3H3_S WM21J565		AND=WAHT1584
		Verify Telemetry RCSpipG3H4_S WM21K565		AND=WAHT1584
		Verify Telemetry CcuHsdHsfG3H5_S WM21L565		AND=WAHT1584
		Verify Telemetry GYRO_G3H6_S WM21M565		AND=ZAD32999
3		Select the HCS to be switch OFF of HPS3: (HCS1 or HCS2 or HCS3 or HCS4 or HCS5 or HCS6)		Next Step: HCS1 4 HCS2 6 HCS3 8 HCS4 10 HCS5 12 HCS6 14
4		Switch OFF HCS1		Next Step: 5
		Execute Telecommand SwOff_FPBOLC_G3H1 TC Control Flags : Subsch. ID : 0 Det. descr. : PCDU:TC(8,4,112,3) switch Off FPBOLC Group 3 HCS 1	DCD57170	

