

Switch ON HCS of HPS2
 File: H_CRP_TCS_02H1.xls
 Author: E. Picallo



Procedure Summary

Objectives

This procedure describes the steps needed to switch ON a selected Heater Control Switch (HCS) of HPS2.

The location units of the HCSs belonging to HPS2 are the following:

- HCS1: Decontamination 3
- HCS2: FCV C1B
- HCS3: FCV A2B
- HCS4: FCV C4B
- HCS5: FPDPU/FPSPU
- HCS6: Tanks

Nominally the temperature control, and therefore the HCSs ON/OFF commanding, is managed by the CDMU ASW and it is driven through the Thermal Control Table (TCT).

Summary of Constraints

The selected HCS is switched ON through ASW TC(8,4,112,5); thus the status of the ASW function "PCDU Management" has to be "running".

Spacecraft Configuration

Start of Procedure

CDMU in default configuration;
 HPS2 ON;
 HCS OFF.

End of Procedure

CDMU in default configuration;
 HPS2 ON;
 HCS switched ON.

Reference File(s)

Input Command Sequences

Output Command Sequences

HRT02H1

Referenced Displays

ANDs GRDs SLDs
 WAHT1584

Configuration Control Information

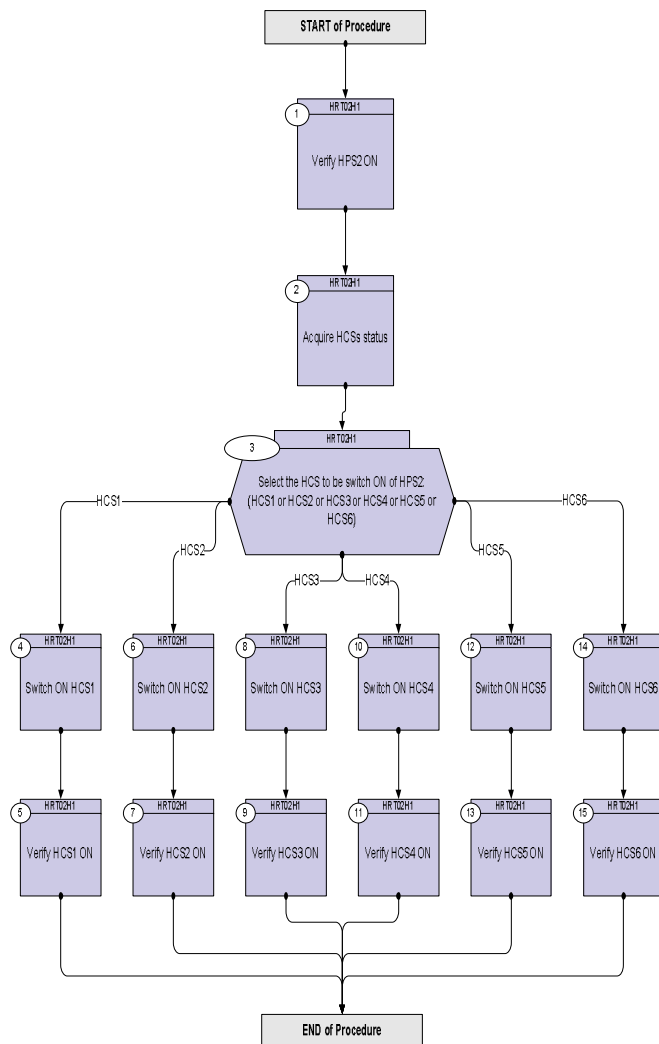
DATE	FOP ISSUE	VERSION	MODIFICATION DESCRIPTION	AUTHOR	SPR REF
16/02/09	2.1	1	Created	E. Picallo	

Status : Version 1 - Unchanged
 Last Checkin: 16/02/09

Switch ON HCS of HPS2
 File: H_CRP_TCS_02H1.xls
 Author: E. Picallo



Procedure Flowchart Overview



Switch ON HCS of HPS2
 File: H_CRP_TCS_02H1.xls
 Author: E. Picallo



Step No.	Time	Activity/Remarks	TC/TLM	Display/ Branch
Beginning of Procedure				
TC Seq. Name : HRT02H1 (Switch ON HCS HPS2)				
TimeTag Type: N				
Sub Schedule ID:				
□				
1		Verify HPS2 ON		Next Step: 2
		Verify Telemetry GRP2_HPS_STS WM22G565 = ON		AND=WAHT1584
2		Acquire HCSs status		Next Step: 3
		Verify Telemetry Decon3_G2H1_S WM21A565		AND=WAHT1584
		Verify Telemetry FcvC1B_G2H2_S WM21B565		AND=WAHT1584
		Verify Telemetry FcvA2B_G2H3_S WM21C565		AND=WAHT1584
		Verify Telemetry FcvC4B_G2H4_S WM21D565		AND=WAHT1584
		Verify Telemetry FpdFps_G2H5_S WM21E565		AND=WAHT1584
		Verify Telemetry tanks_G2H6_S WM21F565		AND=WAHT1584
3		Select the HCS to be switch ON of HPS2: (HCS1 or HCS2 or HCS3 or HCS4 or HCS5 or HCS6)		Next Step: HCS1 4 HCS2 6 HCS3 8 HCS4 10 HCS5 12 HCS6 14
4		Switch ON HCS1		Next Step: 5
		Execute Telecommand SwOn_Decont_3_G2H1	DCC25170	
		TC Control Flags : GBM IL DSE --Y -- ---		
		Subsch. ID : 10 Det. descr. : PCDU:TC(8,4,112,5) switch On Decontamination 3 Group 2 HCS 1		

Switch ON HCS of HPS2
 File: H_CRP_TCS_02H1.xls
 Author: E. Picallo



Step No.	Time	Activity/Remarks	TC/TLM	Display/ Branch
5		Verify HCS1 ON		Next Step: END
		Verify Telemetry Decon3_G2H1_S WM21A565	= ON	AND=WAHT1584
6		Switch ON HCS2		Next Step: 7
		Execute Telecommand SwOn_FCV_C1B_G2H2 TC Control Flags : GBM IL DSE --Y -- --- Subsch. ID : 10 Det. descr. : PCDU:TC(8,4,112,5) switch On FCV C1B Group 2 HCS 2	DCC26170	
7		Verify HCS2 ON		Next Step: END
		Verify Telemetry FcvC1B_G2H2_S WM21B565	= ON	AND=WAHT1584
8		Switch ON HCS3		Next Step: 9
		Execute Telecommand SwOn_FCV_A2B_G2H3 TC Control Flags : GBM IL DSE --Y -- --- Subsch. ID : 10 Det. descr. : PCDU:TC(8,4,112,5) switch On FCV A2B Group 2 HCS 3	DCC27170	
9		Verify HCS3 ON		Next Step: END
		Verify Telemetry FcvA2B_G2H3_S WM21C565	= ON	AND=WAHT1584
10		Switch ON HCS4		Next Step: 11
		Execute Telecommand SwOn_FCV_C4B_G2H4 TC Control Flags : GBM IL DSE --Y -- --- Subsch. ID : 10 Det. descr. : PCDU:TC(8,4,112,5) switch On FCV C4B Group 2 HCS 4	DCC28170	

Switch ON HCS of HPS2
 File: H_CRP_TCS_02H1.xls
 Author: E. Picallo



Step No.	Time	Activity/Remarks	TC/TLM	Display/ Branch
11		Verify HCS4 ON		Next Step: END
		Verify Telemetry FcvC4B_G2H4_S WM21D565	= ON	AND=WAHT1584
12		Switch ON HCS5		Next Step: 13
		Execute Telecommand SwOn_FPDPUPFSPU_G2H5 TC Control Flags : Subsch. ID : 10 Det. descr. : PCDU:TC(8,4,112,5) switch On FPDPU/FPSPU Group 2 HCS 5	DCC29170 GBM IL DSE --Y -- --	
13		Verify HCS5 ON		Next Step: END
		Verify Telemetry FpdFps_G2H5_S WM21E565	= ON	AND=WAHT1584
14		Switch ON HCS6		Next Step: 15
		Execute Telecommand SwOn_Tanks_G2H6 TC Control Flags : Subsch. ID : 10 Det. descr. : PCDU:TC(8,4,112,5) switch On Tanks Group 2 HCS 6	DCC30170 GBM IL DSE --Y -- --	
15		Verify HCS6 ON		Next Step: END
		Verify Telemetry tanks_G2H6_S WM21F565	= ON	AND=WAHT1584
End of Procedure				