

Switch OFF HCS of HPS2
 File: H_CRP_TCS_02H0.xls
 Author: E. Picallo



Procedure Summary

Objectives

This procedure describes the steps needed to switch OFF a selected Heater Control Switch (HCS) of HPS2.

The location units of the HCSs belonging to HPS2 are the following:

- HCS1: Decontamination 3
- HCS2: FCV C1B
- HCS3: FCV A2B
- HCS4: FCV C4B
- HCS5: FPDPU/FPSPU
- HCS6: Tanks

Nominally the temperature control, and therefore the HCSs ON/OFF commanding, is managed by the CDMU ASW and it is driven through the Thermal Control Table (TCT).

Summary of Constraints

The selected HCS is switched OFF through ASW TC(8,4,112,3); thus the status of the ASW function "PCDU Management" has to be "running".

Spacecraft Configuration

Start of Procedure

CDMU in default configuration;
 HPS2 ON;
 HCS ON.

End of Procedure

CDMU in default configuration;
 HPS2 ON;
 HCS switched OFF.

Reference File(s)

Input Command Sequences

Output Command Sequences

HRT02H0

Referenced Displays

ANDs	GRDs	SLDs
ZAD02999		
ZAD32999		

Configuration Control Information

DATE	FOP ISSUE	VERSION	MODIFICATION DESCRIPTION	AUTHOR	SPR REF
Status : Version 1 - Unchanged					
Last Checkin: 16/02/09					

Switch OFF HCS of HPS2
File: H_CRP_TCS_02H0.xls
Author: E. Picallo



16/02/09

2.1

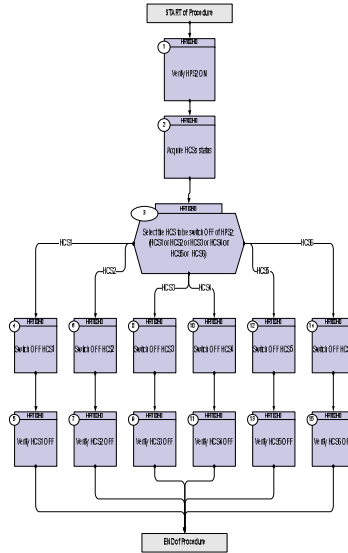
1 Created

E. Picallo

Switch OFF HCS of HPS2
 File: H_CRP_TCS_02H0.xls
 Author: E. Picallo



Procedure Flowchart Overview

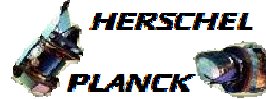


Switch OFF HCS of HPS2
 File: H_CRP_TCS_02H0.xls
 Author: E. Picallo



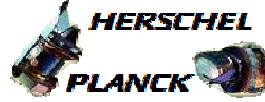
Step No.	Time	Activity/Remarks	TC/TLM	Display/ Branch
Beginning of Procedure				
TC Seq. Name : HRT02H0 (Switch OFF HCS HPS2)				
TimeTag Type: N Sub Schedule ID: □				
1		Verify HPS2 ON		Next Step: 2
		Verify Telemetry GRP2_HPS_STS WM22G565 = ON		AND=ZAD02999
2		Acquire HCSs status		Next Step: 3
		Verify Telemetry Decon3_G2H1_S WM21A565		AND=ZAD32999
		Verify Telemetry FcvC1B_G2H2_S WM21B565		AND=ZAD32999
		Verify Telemetry FcvA2B_G2H3_S WM21C565		AND=ZAD32999
		Verify Telemetry FcvC4B_G2H4_S WM21D565		AND=ZAD32999
		Verify Telemetry FpdFps_G2H5_S WM21E565		AND=ZAD32999
		Verify Telemetry tanks_G2H6_S WM21F565		AND=ZAD32999
3		Select the HCS to be switch OFF of HPS2: (HCS1 or HCS2 or HCS3 or HCS4 or HCS5 or HCS6)		Next Step: HCS1 4 HCS2 6 HCS3 8 HCS4 10 HCS5 12 HCS6 14
4		Switch OFF HCS1		Next Step: 5
		Execute Telecommand SwOff_Decont_3_G2H1 TC Control Flags : Subsch. ID : 10 Det. descr. : PCDU:TC(8,4,112,3) switch Off Decontamination 3 Group 2 HCS 1	DCD51170	
		GBM IL DSE --Y -- --		

Switch OFF HCS of HPS2
 File: H_CRP_TCS_02H0.xls
 Author: E. Picallo



Step No.	Time	Activity/Remarks	TC/TLM	Display/ Branch
5		Verify HCS1 OFF		Next Step: END
		Verify Telemetry Decon3_G2H1_S WM21A565	= OFF	AND=ZAD32999
6		Switch OFF HCS2		Next Step: 7
		Execute Telecommand Swoff_FCV_C1B_G2H2 TC Control Flags : Subsch. ID : 10 Det. descr. : PCDU:TC(8,4,112,3) switch Off FCV C1B Group 2 HCS 2	DCD52170	
		GBM IL DSE --Y -- ---		
7		Verify HCS2 OFF		Next Step: END
		Verify Telemetry FcvC1B_G2H2_S WM21B565	= OFF	AND=ZAD32999
8		Switch OFF HCS3		Next Step: 9
		Execute Telecommand Swoff_FCV_A2B_G2H3 TC Control Flags : Subsch. ID : 10 Det. descr. : PCDU:TC(8,4,112,3) switch Off FCV A2B Group 2 HCS 3	DCD53170	
		GBM IL DSE --Y -- ---		
9		Verify HCS3 OFF		Next Step: END
		Verify Telemetry FcvA2B_G2H3_S WM21C565	= OFF	AND=ZAD32999
10		Switch OFF HCS4		Next Step: 11
		Execute Telecommand Swoff_FCV_C4B_G2H4 TC Control Flags : Subsch. ID : 10 Det. descr. : PCDU:TC(8,4,112,3) switch Off FCV C4B Group 2 HCS 4	DCD54170	
		GBM IL DSE --Y -- ---		

Switch OFF HCS of HPS2
 File: H_CRP_TCS_02H0.xls
 Author: E. Picallo



Step No.	Time	Activity/Remarks	TC/TLM	Display/ Branch
11		Verify HCS4 OFF		Next Step: END
		Verify Telemetry FcvC4B_G2H4_S WM21D565	= OFF	AND=ZAD32999
12		Switch OFF HCS5		Next Step: 13
		Execute Telecommand SwOff_FPDPFPSP_G2H5 TC Control Flags : GBM IL DSE --Y -- -- Subsch. ID : 10 Det. descr. : PCDU:TC(8,4,112,3) switch Off FPDPU/FPSPU Group 2 HCS 5	DCD55170	
13		Verify HCS5 OFF		Next Step: END
		Verify Telemetry FpdFps_G2H5_S WM21E565	= OFF	AND=ZAD32999
14		Switch OFF HCS6		Next Step: 15
		Execute Telecommand SwOff_tanks_G2H6 TC Control Flags : GBM IL DSE --Y -- -- Subsch. ID : 10 Det. descr. : PCDU:TC(8,4,112,3) switch Off Tanks Group 2 HCS 6	DCD56170	
15		Verify HCS6 OFF		Next Step: END
		Verify Telemetry tanks_G2H6_S WM21F565	= OFF	AND=ZAD32999
End of Procedure				