

Switch OFF HCS of HPS1
 File: H_CRP_TCS_01H0.xls
 Author: E. Picallo



Procedure Summary

Objectives

This procedure describes the steps needed to switch OFF a selected Heater Control Switch (HCS) of HPS1.

The location units of the HCSs belonging to HPS1 are the following:

- HCS1: Decontamination 1
- HCS2: XPND2
- HCS3: FCV A1B
- HCS4: FCV C2B
- HCS5: RCS piping
- HCS6: XPND1

Nominally the temperature control, and therefore the HCSs ON/OFF commanding, is managed by the CDMU ASW and it is driven through the Thermal Control Table (TCT).

Summary of Constraints

The selected HCS is switched OFF through ASW TC(8,4,112,3); thus the status of the ASW function "PCDU Management" has to be "running".

Spacecraft Configuration

Start of Procedure

CDMU in default configuration;
 HPS1 ON;
 HCS ON.

End of Procedure

CDMU in default configuration;
 HPS1 ON;
 HCS switched OFF.

Reference File(s)

Input Command Sequences

Output Command Sequences

HRT01H0

Referenced Displays

ANDs GRDs SLDs
 WAHT1584

Configuration Control Information

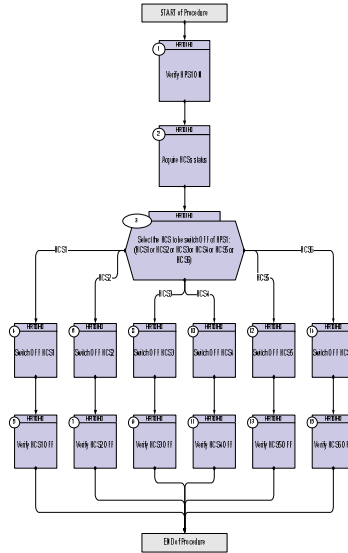
DATE	FOP ISSUE	VERSION	MODIFICATION DESCRIPTION	AUTHOR	SPR REF
16/02/09		1	Created	E. Picallo	
26/02/09	2.1	2	Template updated	E. Picallo	

Status : Version 2 - Unchanged
 Last Checkin: 26/02/09

Switch OFF HCS of HPS1
 File: H_CRP_TCS_01H0.xls
 Author: E. Picallo



Procedure Flowchart Overview



Switch OFF HCS of HPS1
 File: H_CRP_TCS_01H0.xls
 Author: E. Picallo



Step No.	Time	Activity/Remarks	TC/TLM	Display/ Branch
Beginning of Procedure				
TC Seq. Name : HRT01H0 (Switch OFF HCS HPS1)				
TimeTag Type: N				
Sub Schedule ID:				
□				
1		Verify HPS1 ON		Next Step: 2
		Verify Telemetry GRP1_HPS_STS WM12G565 = ON		AND=WAHT1584
2		Acquire HCSs status		Next Step: 3
		Verify Telemetry Decon1_G1H1_S WM11A565		AND=WAHT1584
		Verify Telemetry Xpnd2_G1H2_S WM11B565		AND=WAHT1584
		Verify Telemetry FcvA1B_G1H3_S WM11C565		AND=WAHT1584
		Verify Telemetry FcvC2B_G1H4_S WM11D565		AND=WAHT1584
		Verify Telemetry RCSpipG1H5_S WM11E565		AND=WAHT1584
		Verify Telemetry Xpnd1_G1H6_S WM11F565		AND=WAHT1584
3		Select the HCS to be switch OFF of HPS1: (HCS1 or HCS2 or HCS3 or HCS4 or HCS5 or HCS6)		Next Step: HCS1 4 HCS2 6 HCS3 8 HCS4 10 HCS5 12 HCS6 14
4		Switch OFF HCS1		Next Step: 5
		Execute Telecommand SwOff_Decont_1_G1H1 TC Control Flags : Subsch. ID : 10 Det. descr. : PCDU:TC(8,4,112,3) switch Off Decontamination 1 Group 1 HCS 1	DCD45170	

Switch OFF HCS of HPS1
 File: H_CRP_TCS_01H0.xls
 Author: E. Picallo



Step No.	Time	Activity/Remarks	TC/TLM	Display/ Branch
5		Verify HCS1 OFF		Next Step: END
		Verify Telemetry Decon1_G1H1_S	WM11A565 = OFF	AND=WAHT1584
6		Switch OFF HCS2		Next Step: 7
		Execute Telecommand SwOff_XPND2_G1H2 TC Control Flags : GBM IL DSE --Y -- -- Subsch. ID : 10 Det. descr. : PCDU:TC(8,4,112,3) switch Off XPND2 Group 1 HCS 2	DCD46170	
7		Verify HCS2 OFF		Next Step: END
		Verify Telemetry Xpnd2_G1H2_S	WM11B565 = OFF	AND=WAHT1584
8		Switch OFF HCS3		Next Step: 9
		Execute Telecommand SwOff_FCV_A1B_G1H3 TC Control Flags : GBM IL DSE --Y -- -- Subsch. ID : 10 Det. descr. : PCDU:TC(8,4,112,3) switch Off FCV A1B Group 1 HCS 3	DCD47170	
9		Verify HCS3 OFF		Next Step: END
		Verify Telemetry FcvA1B_G1H3_S	WM11C565 = OFF	AND=WAHT1584
10		Switch OFF HCS4		Next Step: 11
		Execute Telecommand SwOff_FCV_C2B_G1H4 TC Control Flags : GBM IL DSE --Y -- -- Subsch. ID : 10 Det. descr. : PCDU:TC(8,4,112,3) switch Off FCV C2B Group 1 HCS 4	DCD48170	

Switch OFF HCS of HPS1
 File: H_CRP_TCS_01H0.xls
 Author: E. Picallo



Step No.	Time	Activity/Remarks	TC/TLM	Display/ Branch
11		Verify HCS4 OFF		Next Step: END
		Verify Telemetry FcvC2B_G1H4_S WM11D565	= OFF	AND=WAHT1584
12		Switch OFF HCS5		Next Step: 13
		Execute Telecommand SwOff_RCSpip_G1H5 TC Control Flags : Subsch. ID : 10 Det. descr. : PCDU:TC(8,4,112,3) switch Off RCS piping Group 1 HCS 5	DCD49170 GBM IL DSE --Y -- --	
13		Verify HCS5 OFF		Next Step: END
		Verify Telemetry RCSpipG1H5_S WM11E565	= OFF	AND=WAHT1584
14		Switch OFF HCS6		Next Step: 15
		Execute Telecommand SwOff_XPND1_G1H6 TC Control Flags : Subsch. ID : 10 Det. descr. : PCDU:TC(8,4,112,3) switch Off XPND1 Group 1 HCS 6	DCD50170 GBM IL DSE --Y -- --	
15		Verify HCS6 OFF		Next Step: END
		Verify Telemetry Xpnd1_G1H6_S WM11F565	= OFF	AND=WAHT1584
End of Procedure				