

Rejoin Instrument Operations
 File: H_CRP_SYS_RIOP.xls
 Author: F. Keck



Procedure Summary

Objectives

Rejoin instrument operations after triggering of OBCP or after switching off.

Summary of Constraints

Required information from SGS:
 - Planned rejoin time for the instrument
 - Manual instrument commanding to configure the instrument

Spacecraft Configuration

Start of Procedure

OBCP has triggered or instrument is off

End of Procedure

Instrument rejoined operations

Reference File(s)

Input Command Sequences

Output Command Sequences

Referenced Displays

ANDs GRDs SLDs

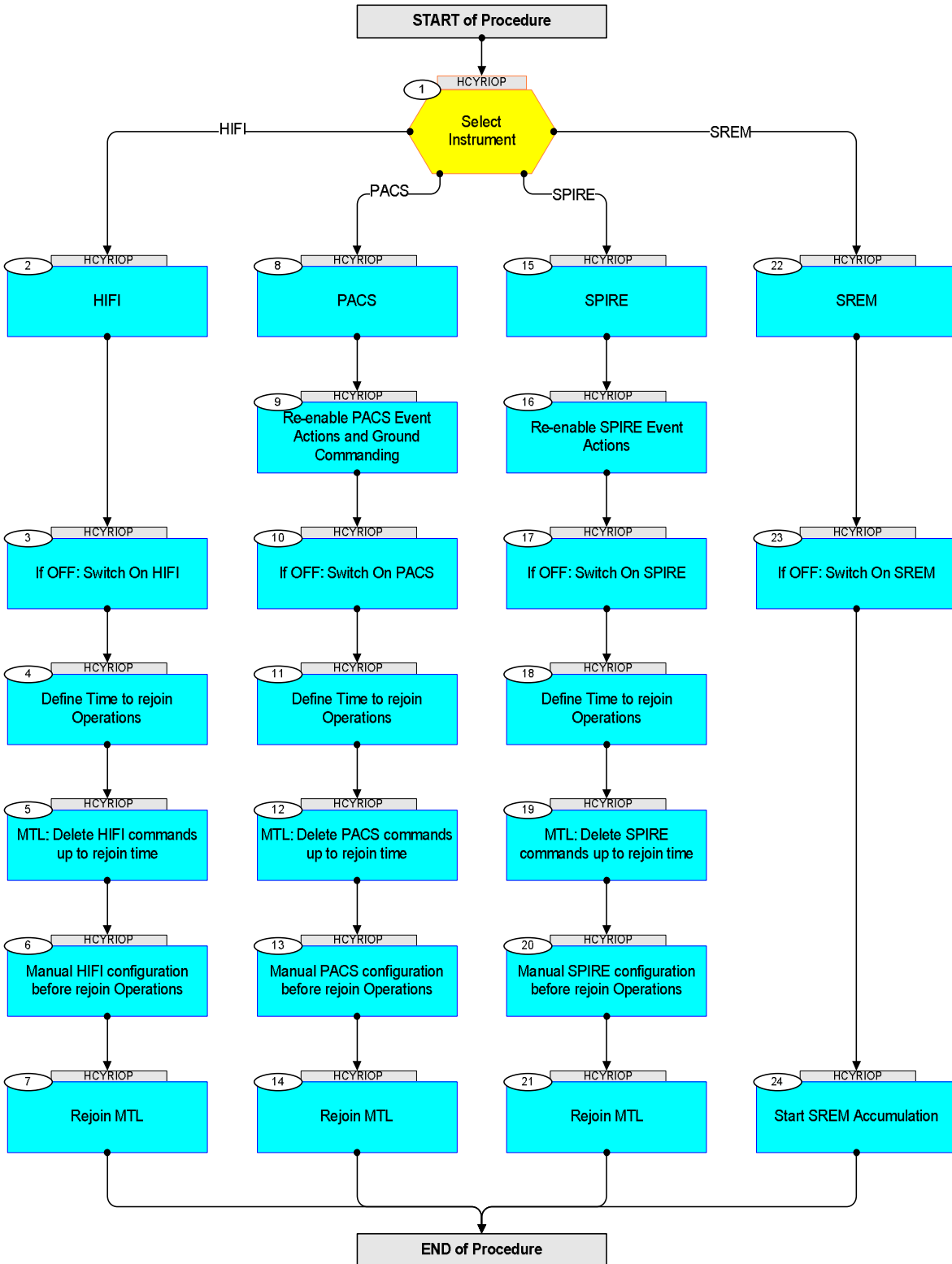
Configuration Control Information

| DATE | FOP ISSUE | VERSION | MODIFICATION DESCRIPTION | AUTHOR | SPR REF |
|------------|-----------|---------|--|---------|---------|
| 21/09/2009 | | 1 | Created | F. Keck | |
| 21/09/2009 | | 2 | Correction of sequence name | F. Keck | |
| 22/09/2009 | 2.5 | 3 | Correction of called reference procedure | F. Keck | |
| 10/03/2010 | 3 | 4 | Switch-on reference calls added, SPIRE CDMU monitoring removed | F. Keck | |
| 15/12/2010 | 3.1 | 5 | Update SPIRE switch-on reference procedure | F. Keck | |

Rejoin Instrument Operations
 File: H_CRP_SYS_RIOP.xls
 Author: F. Keck



Procedure Flowchart Overview



Rejoin Instrument Operations
 File: H_CRP_SYS_RIOP.xls
 Author: F. Keck



| Step No. | Time | Activity/Remarks | TC/TLM | Display/ Branch |
|--|------|--|--------|---|
| Beginning of Procedure | | | | |
| TC Seq. Name : HCYRIOP (Rejoin Instr Ops) TimeTag Type: N Sub Schedule ID: <input type="checkbox"/> | | | | |
| 1 | | Select Instrument | | Next Step: HIFI 2 PACS 8 SPIRE 15 SREM 22 |
| 2 | | HIFI | | Next Step: 3 |
| 3 | | If OFF: Switch On HIFI | | Next Step: 4 |
| | | Execute Procedure: H_COP_HIF_SWON HIFI Switch On Redundant | | |
| 4 | | Define Time to rejoin Operations | | Next Step: 5 |
| | | SGS to inform MOC: - Time to rejoin operations | | |
| 5 | | MTL: Delete HIFI commands up to rejoin time | | Next Step: 6 |
| | | Execute Procedure: H_CRP_DHS_MTLRJ MTL rejoin | | |
| 6 | | Manual HIFI configuration before rejoin Operations | | Next Step: 7 |
| | | SGS to inform MOC: - Manual instrument commanding | | |
| 7 | | Rejoin MTL | | Next Step: END |
| | | Enable HIFI sub-schedule | | |

Rejoin Instrument Operations
 File: H_CRP_SYS_RIOP.xls
 Author: F. Keck



| Step No. | Time | Activity/Remarks | TC/TLM | Display/ Branch |
|----------|------|---|--------|-------------------|
| | | Execute Procedure: H_CRP_DHS_MTLRJ MTL rejoin | | |
| 8 | | PACS | | Next Step: 9 |
| 9 | | Re-enable PACS Event Actions and Ground Commanding | | Next Step: 10 |
| | | Execute Procedure: H_CRP_PAC_OBCP PACS OBCP Recovery | | |
| 10 | | If OFF: Switch On PACS | | Next Step: 11 |
| | | Execute Procedure: H_FCP_PAC_NSON PACS_Switch_On_Nominal Parameters: DPU_PRTN DPU_PARTITION 1<dec> | | |
| 11 | | Define Time to rejoin Operations | | Next Step: 12 |
| | | SGS to inform MOC: - Time to rejoin operations | | |
| 12 | | MTL: Delete PACS commands up to rejoin time | | Next Step: 13 |
| | | Execute Procedure: H_CRP_DHS_MTLRJ MTL rejoin | | |
| 13 | | Manual PACS configuration before rejoin Operations | | Next Step: 14 |
| | | SGS to inform MOC: - Manual instrument commanding | | |
| 14 | | Rejoin MTL | | Next Step: END |
| | | Enable PACS sub-schedule | | |

Rejoin Instrument Operations
 File: H_CRP_SYS_RIOP.xls
 Author: F. Keck



| Step No. | Time | Activity/Remarks | TC/TLM | Display/ Branch |
|----------|------|--|--------|-------------------|
| | | Execute Procedure: H_CRP_DHS_MTLRJ MTL rejoin | | |
| 15 | | SPIRE | | Next Step: 16 |
| 16 | | Re-enable SPIRE Event Actions | | Next Step: 17 |
| | | Execute Procedure: H_CRP_SPI_ENEA Enable SPIRE Event Actions | | |
| 17 | | If OFF: Switch On SPIRE | | Next Step: 18 |
| | | Execute Procedure: H_CRP_SPI_ON Switch ON SPIRE | | |
| 18 | | Define Time to rejoin Operations | | Next Step: 19 |
| | | SGS to inform MOC: - Time to rejoin operations | | |
| 19 | | MTL: Delete SPIRE commands up to rejoin time | | Next Step: 20 |
| | | Execute Procedure: H_CRP_DHS_MTLRJ MTL rejoin | | |
| 20 | | Manual SPIRE configuration before rejoin Operations | | Next Step: 21 |
| | | SGS to inform MOC: - Manual instrument commanding | | |
| 21 | | Rejoin MTL | | Next Step: END |
| | | Enable SPIRE sub-schedule | | |

Rejoin Instrument Operations
 File: H_CRP_SYS_RIOP.xls
 Author: F. Keck



| Step No. | Time | Activity/Remarks | TC/TLM | Display/ Branch |
|-------------------------|------|--|--------|-------------------|
| | | Execute Procedure: H_CRP_DHS_MTLRJ MTL rejoin | | |
| 22 | | SREM | | Next Step: 23 |
| 23 | | If OFF: Switch On SREM | | Next Step: 24 |
| | | Execute Procedure: H_FCP_RM_ON Herschel SREM Switch ON | | |
| 24 | | Start SREM Accumulation | | Next Step: END |
| | | Execute Procedure: H_FCP_RM_ACC Herschel SREM Accumulation | | |
| End of Procedure | | | | |